

United States Department of the Interior
National Park Service

National Register of Historic Places
Registration Form

This form is for use in nominating or requesting determinations for individual properties and districts. See instructions in *How to Complete the National Register of Historic Places Registration Form* (National Register Bulletin 16A). Complete each item by marking "x" in the appropriate box or by entering the information requested. If an item does not apply to the property being documented, enter "N/A" for "not applicable." For functions, architectural classification, materials, and areas of significance, enter only categories and subcategories from the instructions. Place additional entries and narrative items on continuation sheets (NPS Form 10-900a). Use a typewriter, word processor, or computer, to complete all items.

1. Name of Property

historic name Wheeling Corrugating Company Building

other names/site number Cook Composites and Polymers (CCP)

2. Location

street & number 820 East 14th Avenue not for publication

city or town North Kansas City vicinity

state Missouri code MO county Clay code 047 zip code 64141

3. State/Federal Agency Certification

As the designated authority under the National Historic Preservation Act, as amended, I hereby certify that this nomination request for determination of eligibility meets the documentation standards for registering properties in the National Register of Historic Places and meets the procedural and professional requirements set forth in 36 CFR Part 60. In my opinion, the property meets does not meet the National Register criteria. I recommend that this property be considered significant nationally statewide locally. (See continuation sheet for additional comments.)

Claire F. Blackwell 14 Sept 94
 Signature of certifying official/Title Claire F. Blackwell Date
Deputy SHPO
Missouri Department of Natural Resources
 State of Federal agency and bureau

In my opinion, the property meets does not meet the National Register criteria. (See continuation sheet for additional comments.)

 Signature of certifying official/Title Date

 State or Federal agency and bureau

4. National Park Service Certification

I hereby certify that the property is:	Signature of the Keeper	Date of Action
<input type="checkbox"/> entered in the National Register. <input type="checkbox"/> See continuation sheet.	_____	_____
<input type="checkbox"/> determined eligible for the National Register <input type="checkbox"/> See continuation sheet.	_____	_____
<input type="checkbox"/> determined not eligible for the National Register.	_____	_____
<input type="checkbox"/> removed from the National Register.	_____	_____
<input type="checkbox"/> other, (explain:)	_____	_____

Wheeling Corrugating Co. Bldg.

Name of Property

Clay County, Missouri

County and State

5. Classification

Ownership of Property

(Check as many boxes as apply)

- private
- public-local
- public-State
- public-Federal

Category of Property

(Check only one box)

- building(s)
- district
- site
- structure
- object

Number of Resources within Property

(Do not include previously listed resources in the count.)

Contributing	Noncontributing	
1	0	buildings
0	0	sites
0	0	structures
0	0	objects
1	0	Total

Name of related multiple property listing

(Enter "N/A" if property is not part of a multiple property listing.)

N/A

Number of contributing resources previously listed in the National Register

0

6. Function or Use

Historic Functions

(Enter categories from instructions)

COMMERCE: Business
INDUSTRY: Manufacturing Facility

Current Functions

(Enter categories from instructions)

COMMERCE: Business
INDUSTRY: Manufacturing Facility

7. Description

Architectural Classification

(Enter categories from instructions)

NO STYLE

Materials

(Enter categories from instructions)

foundation concrete

walls brick

roof asphalt

other concrete

Narrative Description

(Describe the historic and current condition of the property on one or more continuation sheets.)

Wheeling Corrugating Co. Bldg.

Clay County, Missouri
County and State

Name of Property

8. Statement of Significance

Applicable National Register Criteria

(Mark "x" in one or more boxes for the criteria qualifying the property for National Register listing.)

- A** Property is associated with events that have made a significant contribution to the broad patterns of our history.
- B** Property is associated with the lives of persons significant in our past.
- C** Property embodies the distinctive characteristics of a type, period, or method of construction or represents the work of a master, or possesses high artistic values, or represents a significant and distinguishable entity whose components lack individual distinction.
- D** Property has yielded, or is likely to yield, information important in prehistory or history.

Criteria Considerations

(Mark "x" in all the boxes that apply.)

Property is:

- A** owned by a religious institution or used for religious purposes.
- B** removed from its original location.
- C** a birthplace or grave.
- D** a cemetery.
- E** a reconstructed building, object, or structure.
- F** a commemorative property.
- G** less than 50 years of age or achieved significance within the past 50 years.

Narrative Statement of Significance

(Explain the significance of the property on one or more continuation sheets.)

9. Major Bibliographical References

Bibliography

(Cite the books, articles, and other sources used in preparing this form on one or more continuation sheets.)

Previous documentation on file (NPS):

- preliminary determination of individual listing (36 CFR 67) has been requested
- previously listed in the National Register
- previously determined eligible by the National Register
- designated a National Historic Landmark
- recorded by Historic American Buildings Survey # _____
- recorded by Historic American Engineering Record # _____

Areas of Significance

(Enter categories from instructions)

COMMERCE

INDUSTRY

Period of Significance

1920-1944

Significant Dates

1920

Significant Person

(Complete if Criterion B is marked above)

N/A

Cultural Affiliation

N/A

Architect/Builder

Tarbet & Gornall

Primary location of additional data:

- State Historic Preservation Office
- Other State agency
- Federal agency
- Local government
- University
- Other

Name of repository:

Kansas City Public Library

Wheeling Corrugating Co. Bldg.

Name of Property

Clay County, Missouri

County and State

10. Geographical Data

Acreage of Property less than one acre

UTM References

(Place additional UTM references on a continuation sheet.)

1 1 5 3 6 42 50 43 3 26 70
Zone Easting Northing

3 4
Zone Easting Northing

See continuation sheet

Verbal Boundary Description

(Describe the boundaries of the property on a continuation sheet.)

Boundary Justification

(Explain why the boundaries were selected on a continuation sheet.)

11. Form Prepared By

name/title Cydney E. Millstein and Linda F. Becker

organization Architectural & Art Historical Research date June 1994

street & number P. O. Box 22551 telephone (816) 363-0567

city or town Kansas City state Missouri zip code 64113

Additional Documentation

Submit the following items with the completed form:

Continuation Sheets

Maps

A USGS map (7.5 or 15 minute series) indicating the property's location.

A Sketch map for historic districts and properties having large acreage or numerous resources.

Photographs

Representative black and white photographs of the property.

Additional items

(Check with the SHPO or FPO for any additional items)

Property Owner

(Complete this item at the request of SHPO or FPO.)

name Cook Composites and Polymers (CCP)

street & number 919 E. 14th Avenue telephone (816) 391-6200

city or town North Kansas City state Missouri zip code 64141

Paperwork Reduction Act Statement: This information is being collected for applications to the National Register of Historic Places to nominate properties for listing or determine eligibility for listing, to list properties, and to amend existing listings. Response to this request is required to obtain a benefit in accordance with the National Historic Preservation Act, as amended (16 U.S.C. 470 et seq.).

Estimated Burden Statement: Public reporting burden for this form is estimated to average 18.1 hours per response including time for reviewing instructions, gathering and maintaining data, and completing and reviewing the form. Direct comments regarding this burden estimate or any aspect of this form to the Chief, Administrative Services Division, National Park Service, P.O. Box 37127, Washington, DC 20013-7127; and the Office of Management and Budget, Paperwork Reductions Projects (1024-0018), Washington, DC 20503.

United States Department of the Interior
National Park Service

NATIONAL REGISTER OF HISTORIC PLACES
CONTINUATION SHEET

Section number 7 Page 3

Wheeling Corrugating Company Building
Clay County, Missouri

=====

near ground level to the middle of the second story. Tile coping caps the roof line.

An addition to the north facade, built c. 1950, consists of a one-story concrete block building with barrel vault roof.¹ The north facade of the addition, which is three bays wide, features a multi-light, multi-paneled wooden overhead door. To the east of the door are two large multi-light windows. The west facade, which is four bays wide, contains two multi-light, multi-paneled overhead doors, one at the first bay (n-s) and the other at the third bay (n-s). The remaining three bays display multi-light rectangular windows with concrete sills. The eight-bay east facade features a two-paneled (glass upper panel) door in the first bay (s-n). A multi-light window is located in the next bay. Three multi-light and multi-paneled overhead doors are located in the next three bays; the next bay features a multi-paneled double-bay overhead door. The last bay features a sliding fire door. A narrow lintel stretches from the top of the double overhead door to the end of the building, while a continuous unadorned concrete band runs the length of the east facade.

Interior

The interior of the building is utilitarian in design, consisting mainly of open floors with exposed unadorned reinforced concrete columns. Generally speaking, the building does not contain any distinguishing historic features. A remodeling project which began in July, 1961 and completed May, 1962 substantially altered the interior. At this time the original interior was converted into office and laboratory space. A new passenger elevator, which supplemented the existing freight lift, was also added at this time.

Currently, there are proposed plans for the renovation of the Wheeling Corrugating Company Building. These plans are being prepared in accordance with the Secretary of Interior's Standard's or Rehabilitation and Guidelines for Rehabilitation of Historic Buildings by Frederick S. Truog and Associates Architects, Inc., Kansas City, Missouri, for CCP (Cook Composites and Polymers). Once the proposed plans are completed they will be sent to the Missouri State Historic Preservation Office for their review.

¹ "Application of Wheeling Corrugating Company and Chicago, Burlington and Quincy Railroad Company for authority to construct and maintain an addition to present warehouse building...". Case No. 11,991 before the Public Service Commission of the State of Missouri. The document states that the original loading dock, constructed after 1931, was demolished in order for Wheeling Corrugating to "...operate its business more effectively and efficiently...". The date of this document is August, 1950.

United States Department of the Interior
National Park Service

NATIONAL REGISTER OF HISTORIC PLACES
CONTINUATION SHEET

Section number 7 Page 4

Wheeling Corrugating Company Building
Clay County, Missouri

=====

Wheeling Corrugating Company Building, c. 1924. View looking northwest.
Source: North Kansas City Industrial Magazine.



NPS Form 10-900-a
(8-86)

OMB Approval No. 1024-0018

United States Department of the Interior
National Park Service

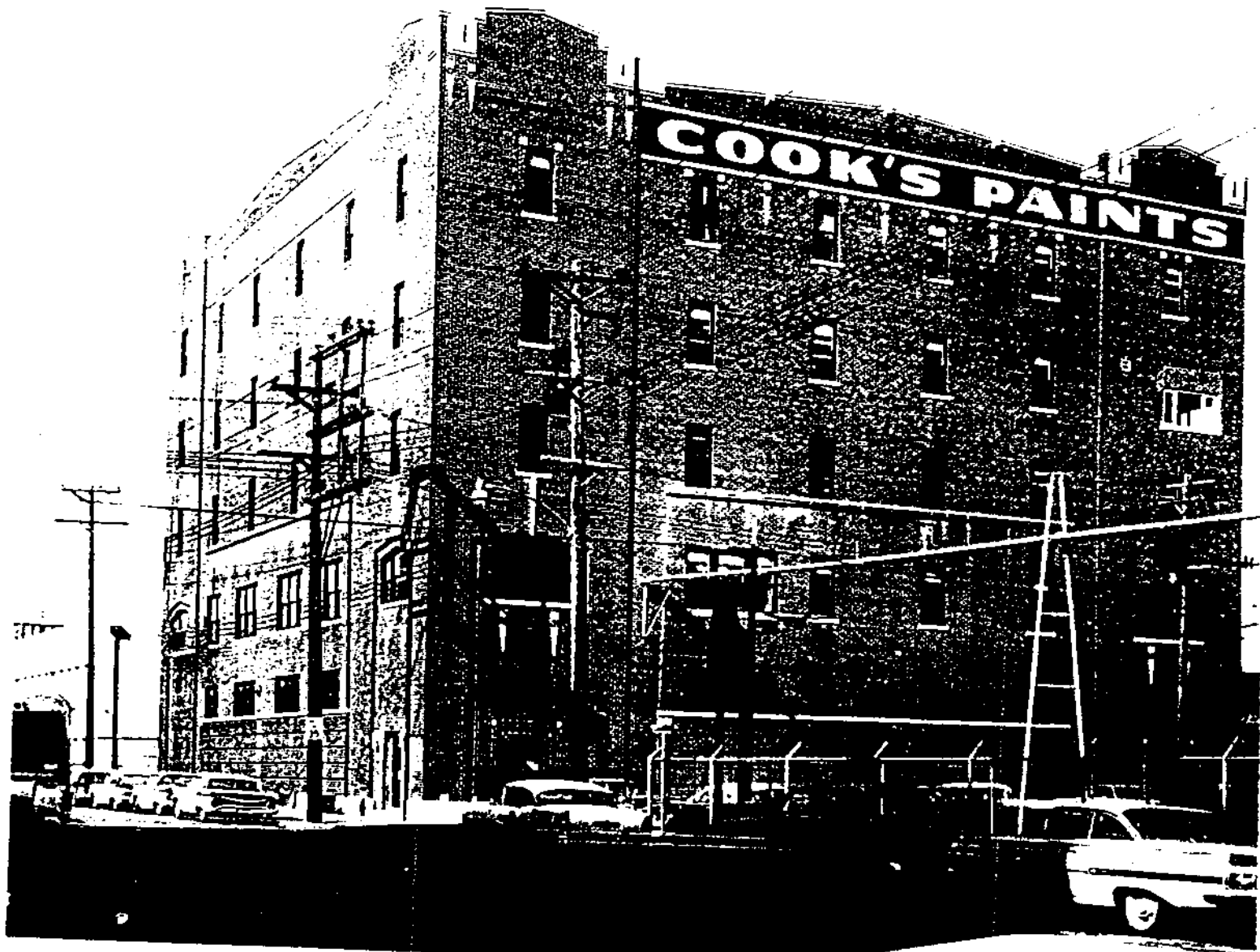
NATIONAL REGISTER OF HISTORIC PLACES
CONTINUATION SHEET

Section number 7 Page 5

Wheeling Corrugating Company Building
Clay County, Missouri

=====

Wheeling Corrugating Company Building, c. 1960s. View looking
northwest. Source: Files: CCP, North Kansas City, Missouri.



United States Department of the Interior
National Park Service

NATIONAL REGISTER OF HISTORIC PLACES
CONTINUATION SHEET

Section number 8 Page 6 Wheeling Corrugating Company Building
Clay County, Missouri

Summary:

The Wheeling Corrugating Company Building is significant under Criterion A in the following areas: COMMERCE and INDUSTRY. Constructed in 1920 for the Wheeling Corrugating Company, the building is significant because it reflects the activities of the largest steel company and manufacturing facility to be located in North Kansas City² and also as a representative of one of the most important acquisitions to the area's planned Industrial District. The company was one of fourteen branch offices of the Wheeling Corrugating Company, formed by Alexander Glass in Wheeling, West Virginia in 1890. The North Kansas City plant which distributed its products throughout western Missouri, southwest Iowa, Kansas, Nebraska, Oklahoma, Colorado, Wyoming, Utah, Nevada and Idaho, helped to establish the Wheeling Corrugating Company as one of the largest manufacturing businesses of its kind in the nation. Furthermore, the advent of manufacturing concerns such as the Wheeling Corrugating Company to the newly formed industrial community of North Kansas City abetted the overall development and expansion of the city as a whole. The period of significance is 1920-1944, the end date established by the arbitrary fifty year limit.

Elaboration:

The building located at 820 E. 14th Avenue, North Kansas City, Missouri, was the site of a branch office and manufacturing plant of the Wheeling Corrugation Company for thirty-six years. Designed by the Kansas City architectural firm of Tarbet and Gornall³, the five-story building was constructed in 1920 as a warehouse and sheet metal fabricating factory for the company. The parent company of the Wheeling Corrugating Company, located in Wheeling, West Virginia, decided to place one of their newer plants in North Kansas City after they had tested the area's marketability with a distribution office.⁴

Noted as a leader in the galvanized flat sheet steel industry, Wheeling Corrugating Company was formed in 1890 by Alexander Glass as an

²"Iron and Steel Industry Show Steady Growth." North Kansas City Industrial District Magazine. November, 1924, 4.

³"Branch Leads to Factory." The Kansas City Star. July 25, 1920, 6A; Western Contractor. July 28, 1920, 32 and August 4, 1920, 32;

⁴"Iron and Steel Industry Show Steady Growth", 6A.

United States Department of the Interior
National Park Service

NATIONAL REGISTER OF HISTORIC PLACES
CONTINUATION SHEET

Section number 8 Page 7 Wheeling Corrugating Company Building
Clay County, Missouri

=====
outgrowth of the Whitaker Iron Company.⁵ Glass, with the benefit of investments from his father-in-law, Nelson E. Whitaker, president of Whitaker Iron, and E. C. Ewing, a veteran production man with the company, leased a small factory in Wheeling, West Virginia, and "began to buy Whitaker black sheets which he galvanized and ran through a ridged metal ringer to wrinkle (corrugate) and strengthen them."⁶ Glass had the foresight to develop a lightweight metal building material, coated with zinc to protect it from rust and corrugated to add to its durability. Overseeing the factory's operation and raw materials was Ewing, who was elected president. Glass was chosen secretary.⁷

Wheeling Corrugating Company's charter for incorporation was scarcely signed when Glass and his associates realized that they had "found themselves in the pleasant position of selling their product to a hungry market."⁸ The corrugated metal produced by Wheeling was a very attractive replacement for the old wood roofs of many of the buildings in the Mid West and South. The popularity of these rust and fire resistant metal roofs quickly led to the production of conductor pipe and trimmings, metal ceiling, tinplate and terne plate for hundreds of various uses. By 1895, the company had diversified.⁹

In 1903 a second Wheeling Corrugating plant was opened in Martins Ferry, Ohio, the same year that the Whitaker Iron Company along with Laughlin Nail Works were merged into the Whitaker-Glessner Company.¹⁰ Subsequently, Wheeling Corrugating opened branch plants in Richmond, Virginia and St. Louis, Missouri.

The third and westernmost branch plant to be established by Wheeling Corrugating was their North Kansas City facility. After exploring the viability of this area, the company chose to erect a five-story plant and warehouse in the heart of the North Kansas City Industrial District. Plans to develop this large tract of land lying just north of

⁵Earl Chapin May. Principio To Wheeling, 1715-1945: A Pageant of Iron and Steel. (New York: Harper & Brothers Publishers, 1945), 209-210.

⁶Principio to Wheeling, 201.

⁷Ibid, 210.

⁸Ibid.

⁹Ibid, 211.

¹⁰Wheeling Corrugating Company. Company Brochure, 2; Charles A. Wingerter, ed. History of Greater Wheeling and Vicinity. (Chicago & New York: Lewis Publishing Company), 297; Principio to Wheeling, 281.

United States Department of the Interior
National Park Service

NATIONAL REGISTER OF HISTORIC PLACES
CONTINUATION SHEET

Section number 8 Page 10 Wheeling Corrugating Company Building
Clay County, Missouri

=====

Wheeling Corrugating Company, along with several other steel manufacturing plants¹⁹, established themselves as "one of the outstanding features of [the area's] remarkable industrial growth"²⁰ during the early 1920s. The wholesale sales of hardware, iron and steel products totaled \$9,867,418 in 1919 and by 1923 the total rose to \$30,691,337 for an increase of forty-seven percent. In the state of Missouri, the steel works and rolling mills industry was one of the leading twenty manufacturing industries in 1921 and 1923.²¹ Wheeling Corrugating kept pace with the industry's growth and expansion through the next two decades until 1944.

Although the period of significance ends with the arbitrary fifty-year cut-off in 1944, it is important to note that Wheeling Corrugating Company still maintains and operates a plant in the Kansas City metropolitan area. In 1956, the company sold its five-story building to Cook Paint and Varnish Company, the same year they leased a larger building at 820 Atlantic Street in North Kansas City.²² In October, 1971, the company relocated to Lenexa, Kansas where they are still in operation. Today, Wheeling Corrugating Company remains the oldest corrugating company in the United States.²³

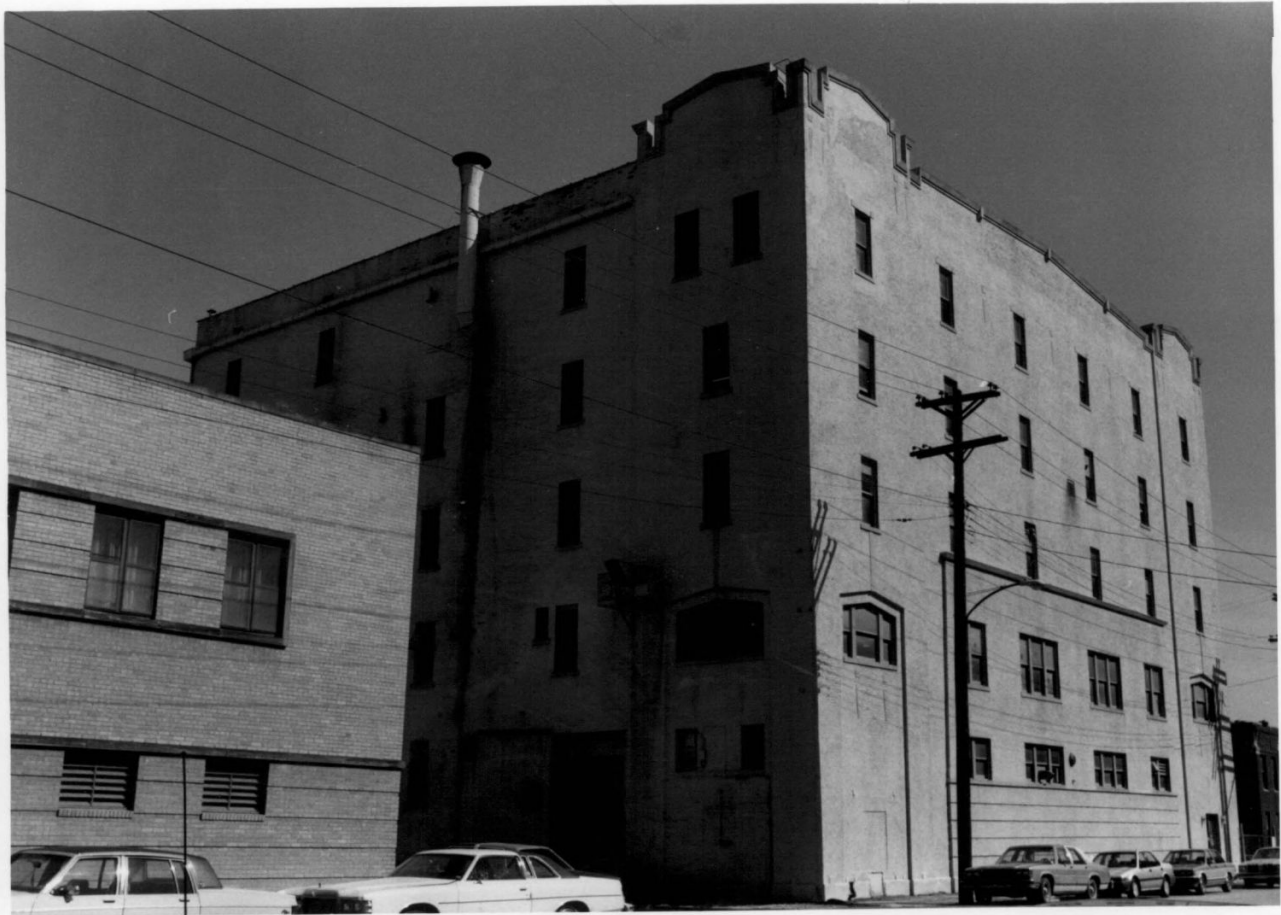
¹⁹Other steel manufacturers included Berger Manufacturing Company, American Brake Shoe and Foundry Company, Standard Steel Works, Deckard Steel & Iron Company and The Truscon Steel Company, all located in North Kansas City.

²⁰"Iron and Steel Industry Show Steady Growth", 5.

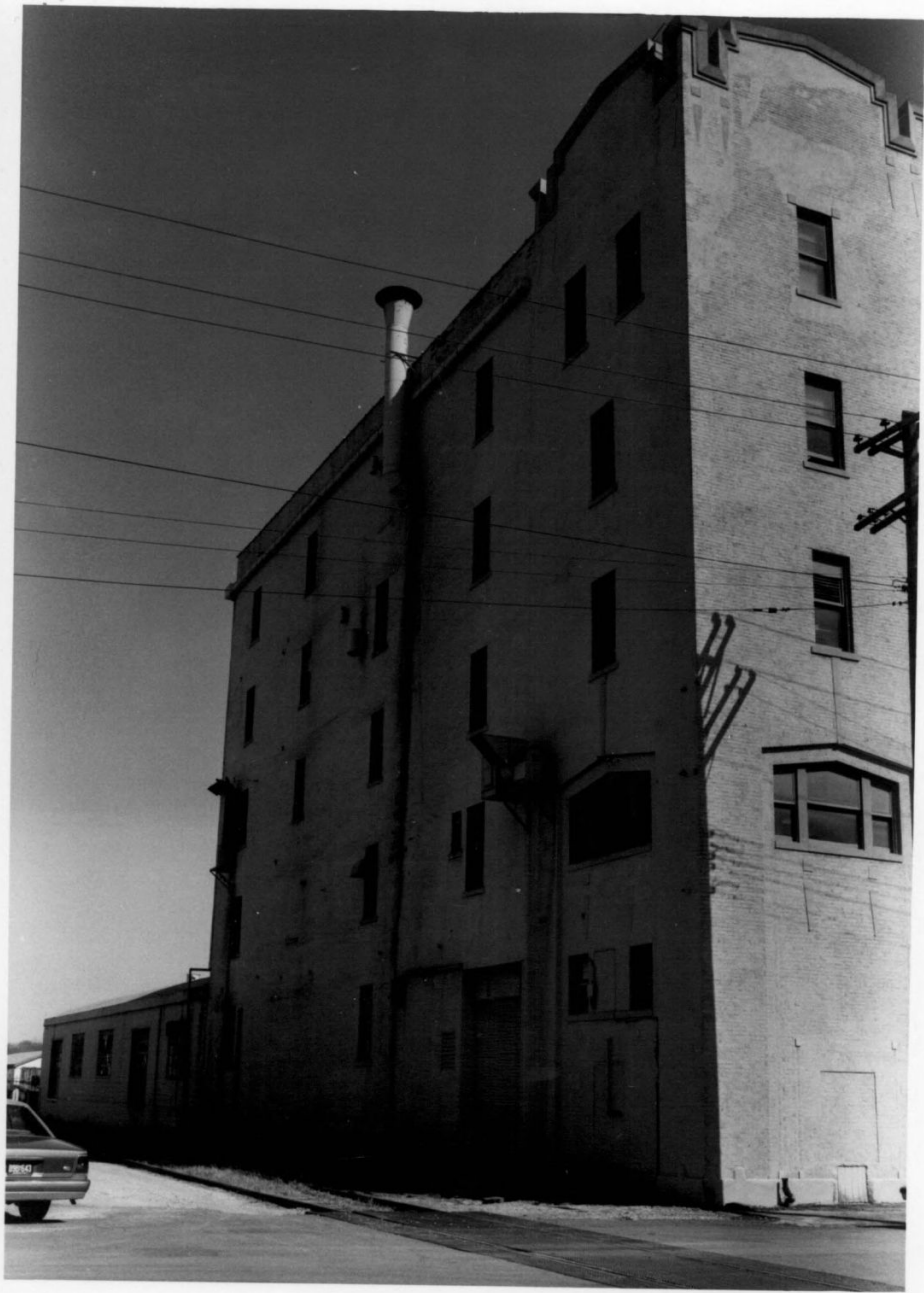
²¹Ibid.

²²"Link Two Deals", The Kansas City Star. February 12, 1956, n.p. Five years after the building was sold, Cook Paint began remodeling work. Keene & Simpson & Murphy, Kansas City, Missouri, were the architects for the project. The work was completed in May, 1962.

²³The company remains a subsidiary of Wheeling-Pittsburgh Steel Corporation, a company formed by the merger of Wheeling Steel Corporation and Pittsburgh Steel Company. Prior to this 1968 merger, Wheeling Corrugating became part of Wheeling Steel Corporation. This occurred in 1920.









EXTRA
PHOTOS





