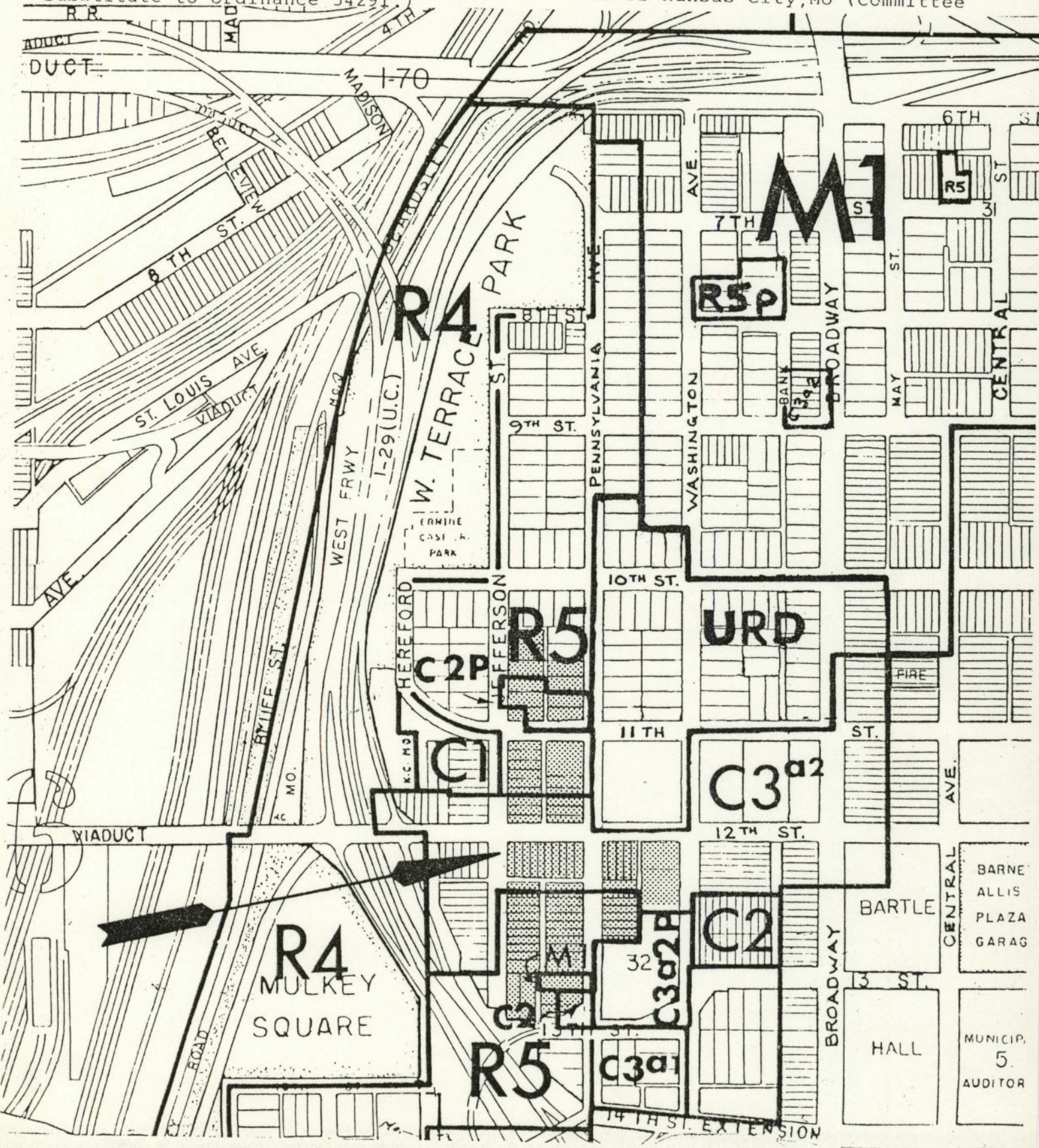


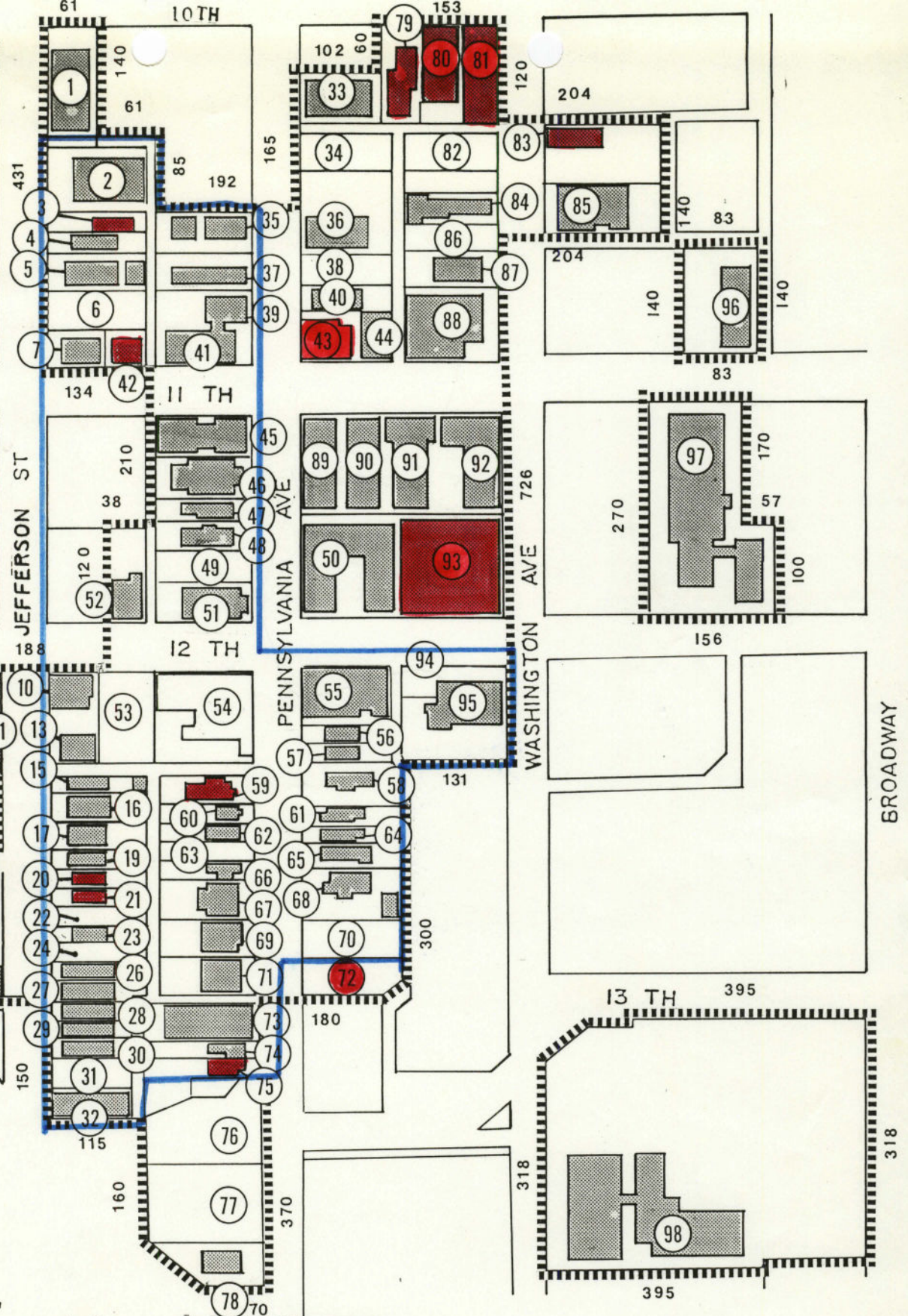
CASE 250-S-64

(10)
11-19-85
12-17-85

CASE NO. 250-S-64 - QUALITY HILL WEST HISTORIC DISTRICT - the area generally bounded by W. 10th Street, Pennsylvania, W. 12th Street, Washington, W. 13th Street and Jefferson - to consider its designation as a Historic District pursuant to Section A6.125, Administrative Code of Kansas City, Mo (Committee Substitute to Ordinance 5429)



HEREFORD DR



"QUALITY HILL"
 KANSAS CITY, MISSOURI
 SITE PLAN MAP

LANDMARKS
 COMMISSION
 CASE # 0091-D

Primary Significance
 No Significance to the
 Neighborhood (INTRUSIONS)

EXHIBIT F-2

UTM REFERENCES

- A 15/362670/4329120
- B 15/362640/4328600
- C 15/362270/4328610
- D 15/362260/4329160

W. 10th

Quality Hill West

Jefferson

Pennsylvania

Washington

W. 11th

W. 12th

W. 13th

