

MITCHELL

REMICK
B-3

BARTLETT PARK

MONTEREY
B-4

DUNCAN



Map B-1, SWP-2a.
Bartlett Park
Southwest Parkway



Photographs

Approximate Boundary

B-1 B-2

B-5

B-6

B-7

B-8

B-9

958.3 X

962.0 X

980.2 X

975

Restrooms

947.6 X

950

988.0 X

981.8 X

975.2 X

904.0 X

1001.0 X

1000

JODY LN.

SOUTHWEST PWY.

X 981.6

X 959.0

X 999.0

992.2 X

X 998.0

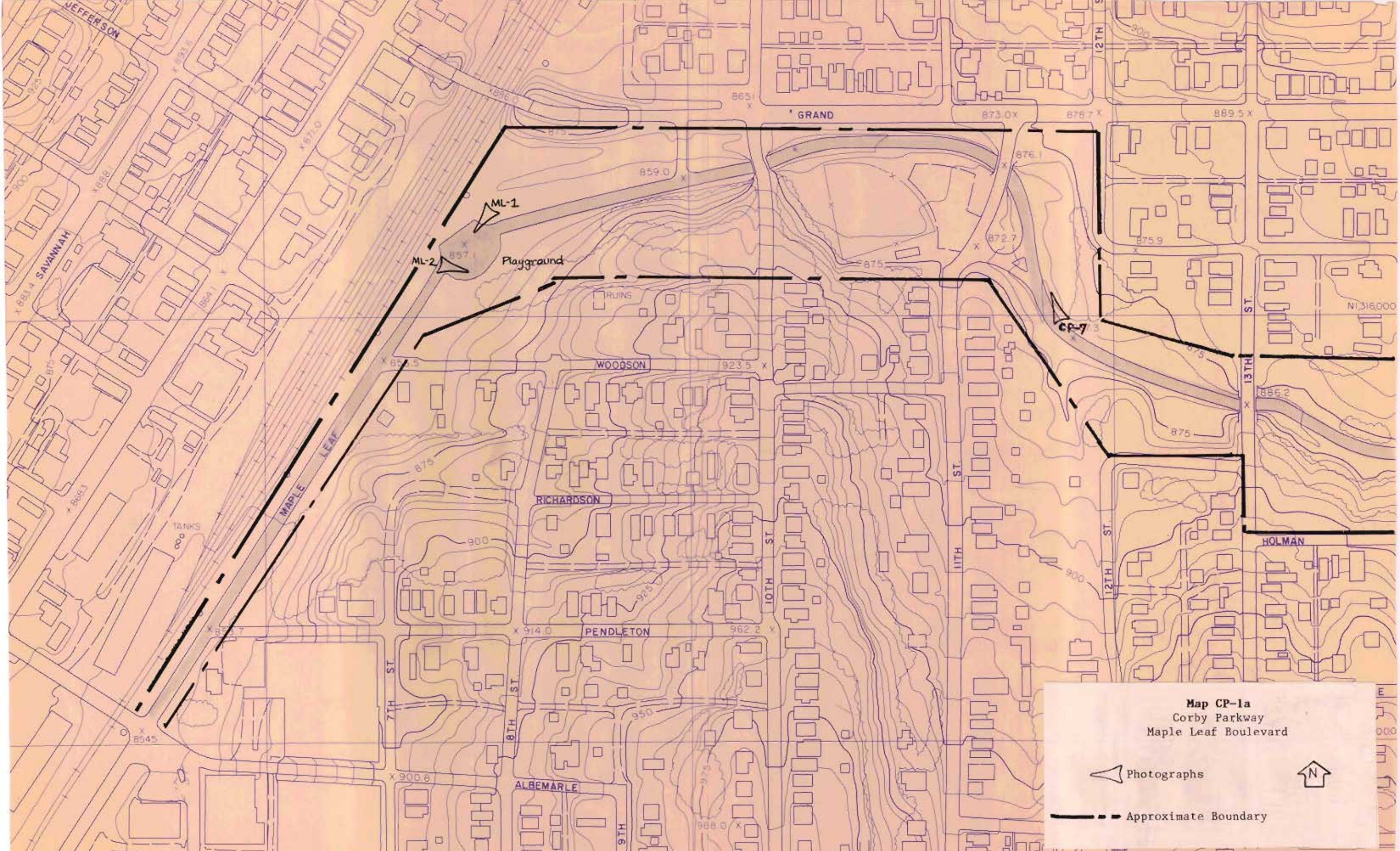
996.8 X

X 991.0

X 960.5

X 960.5

X 939.0

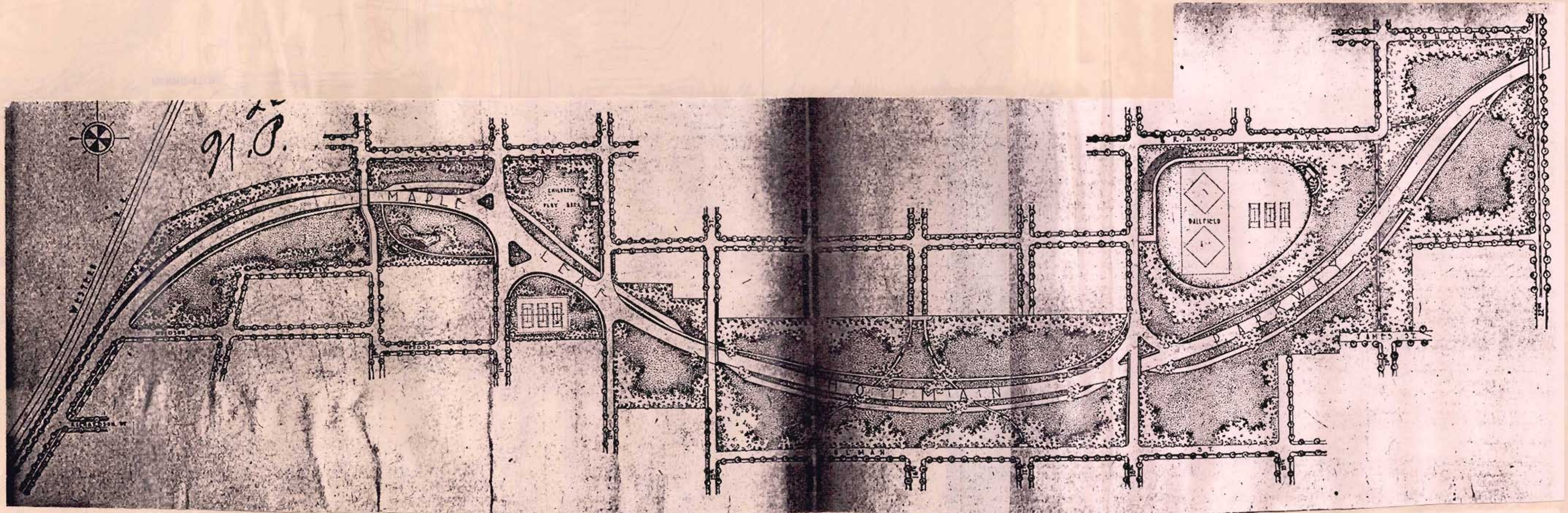


Map CP-1a
Corby Parkway
Maple Leaf Boulevard

Photographs

Approximate Boundary

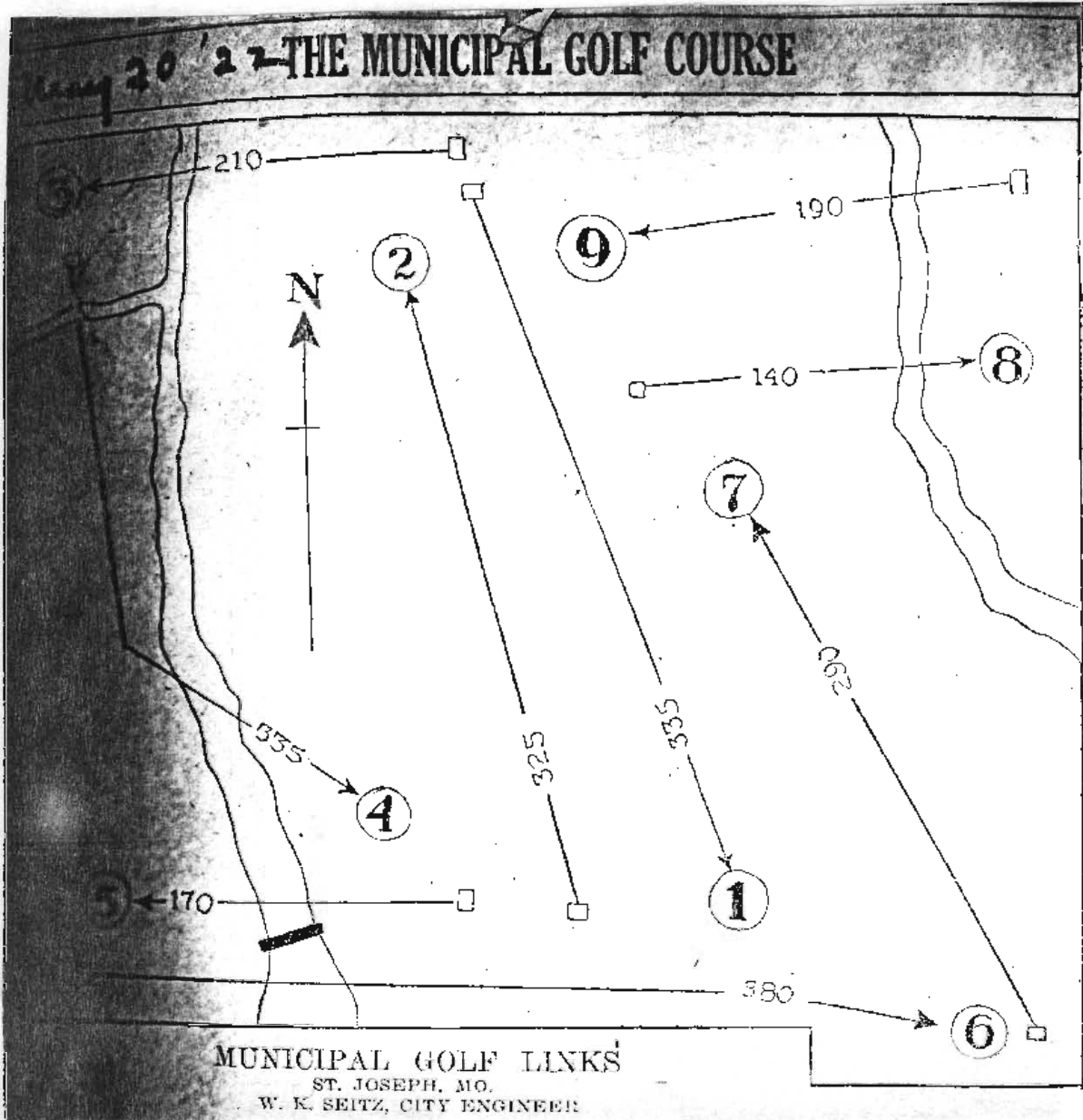
N



91.0.

Map CP-1
Corby Parkway
1926





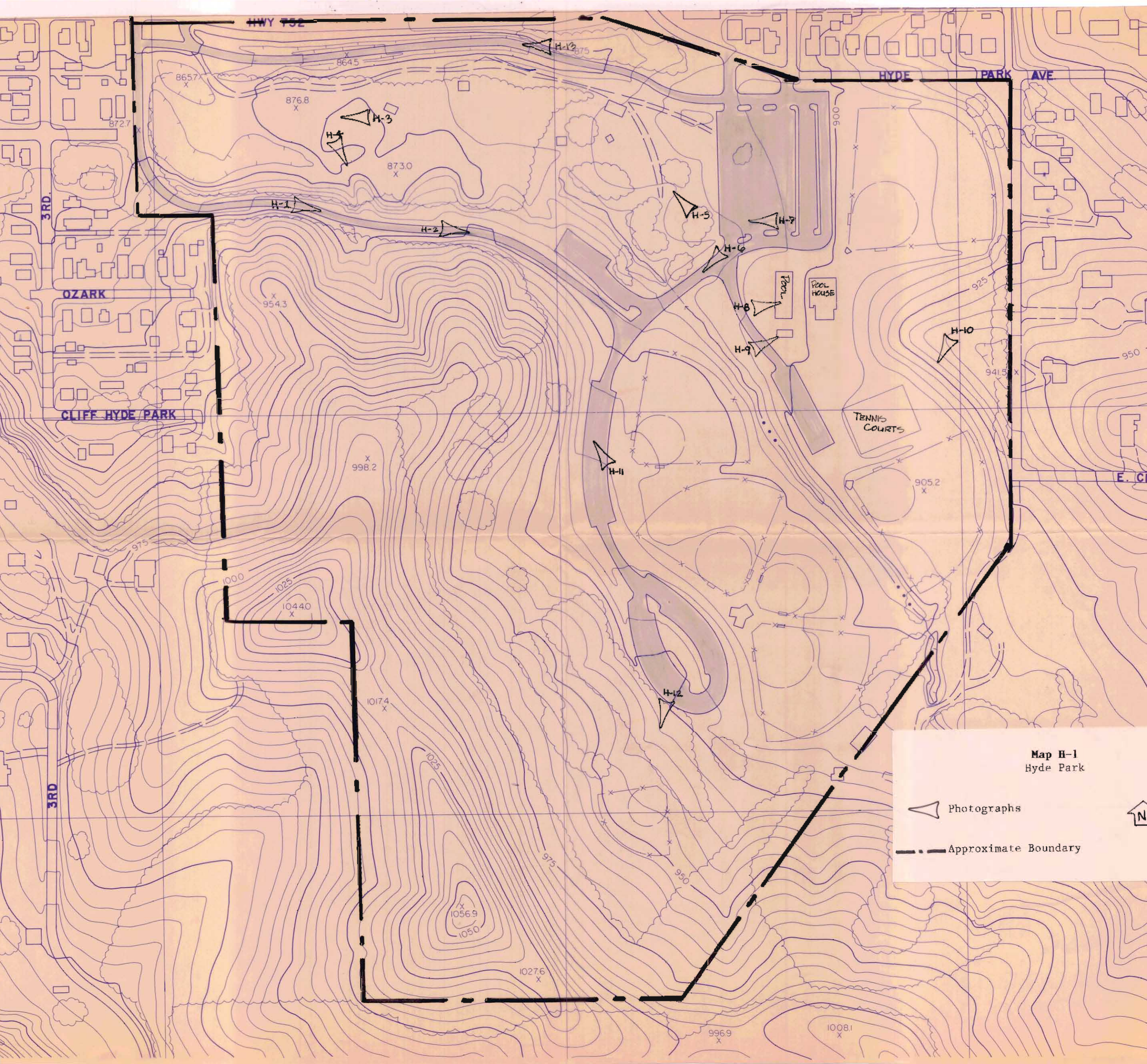
Map F-1.
Fairview Golf Course, 1922.





Map F-2
Fairview Golf Course

- Photographs
- Approximate Boundary
- Inset - Hole layout

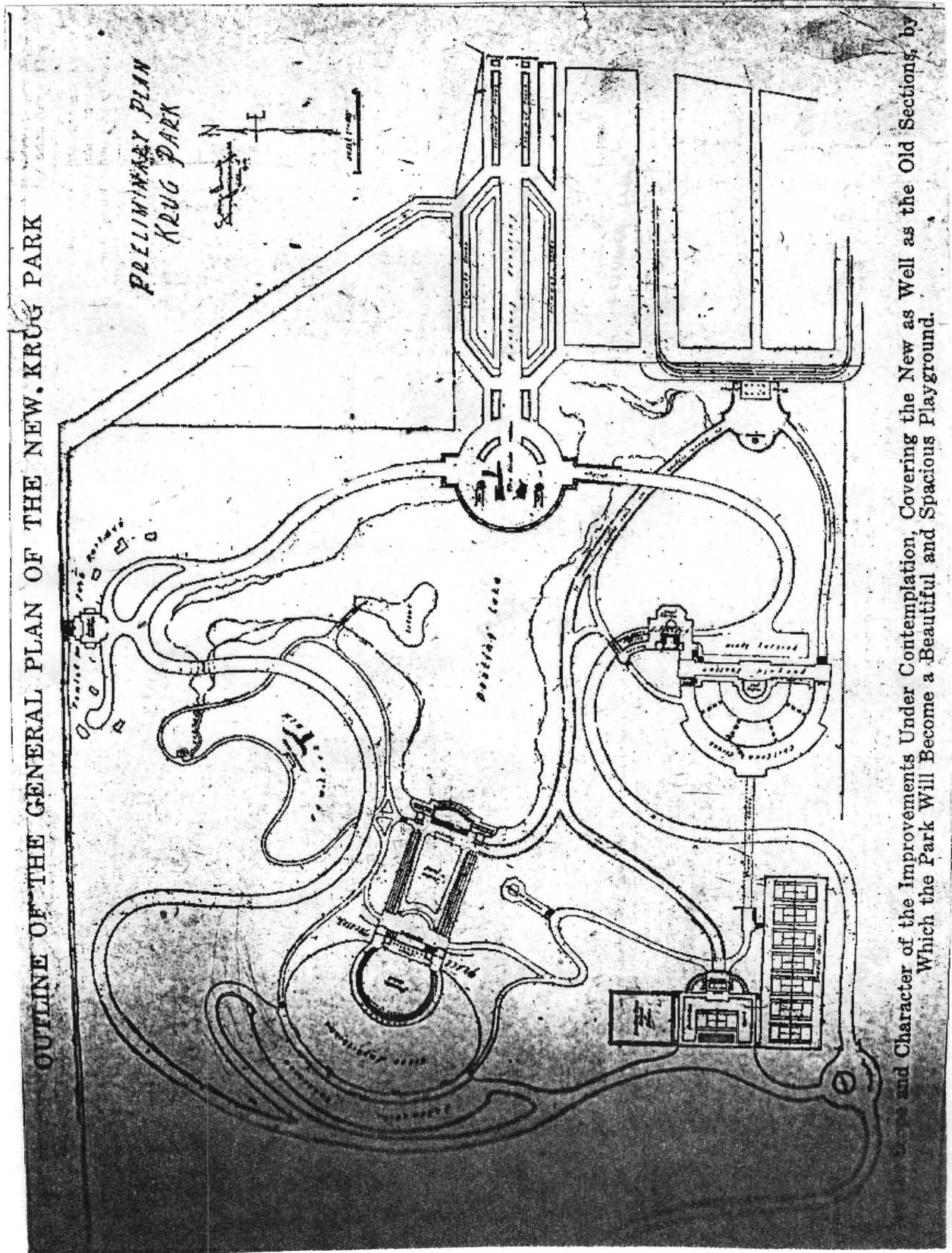




Map H-1
Hyde Park

-  Photographs
-  Approximate Boundary



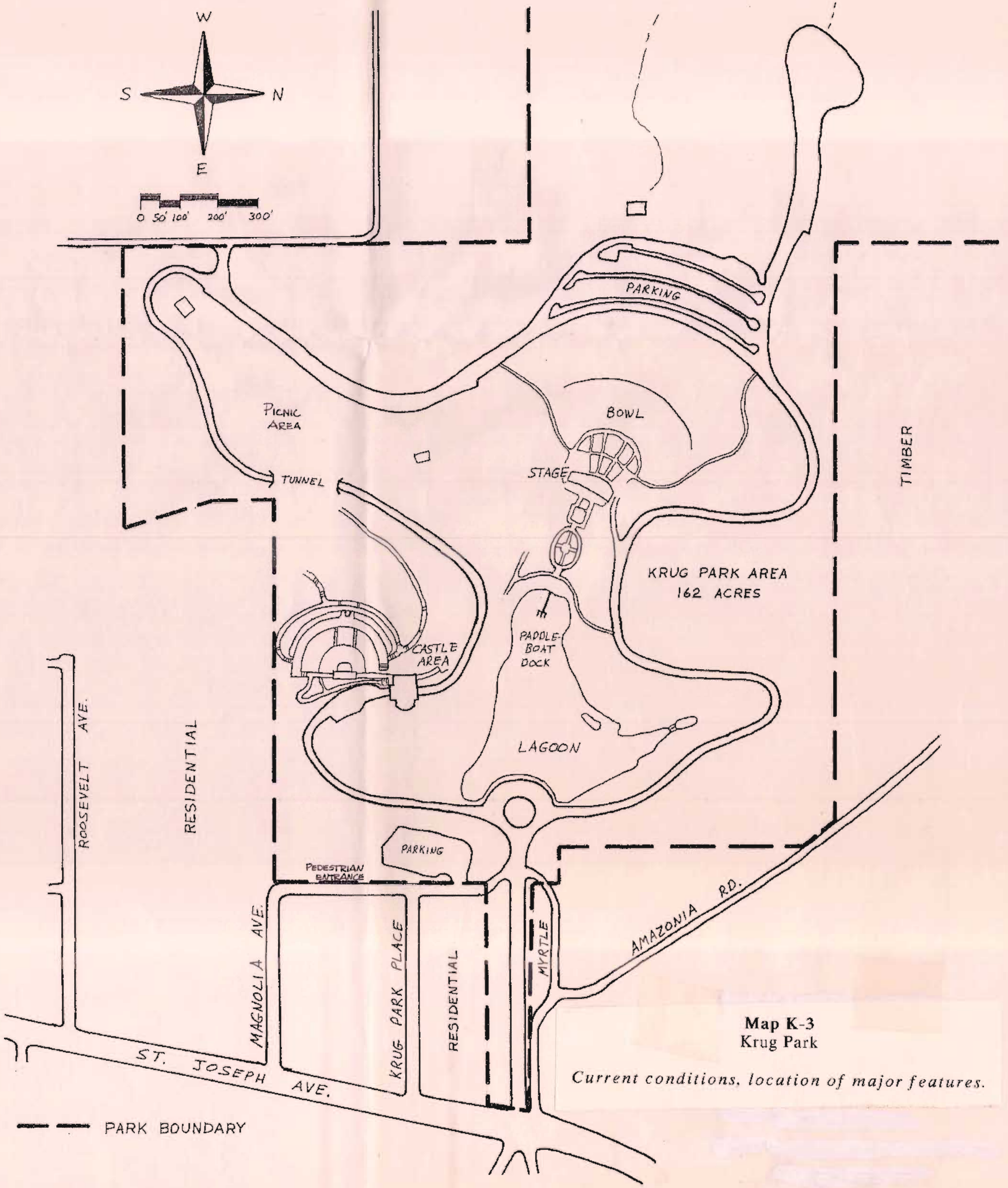
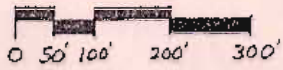
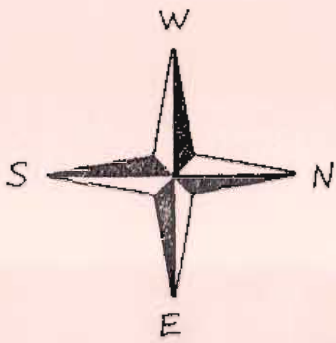


and Character of the Improvements Under Contemplation, Covering the New as Well as the Old Sections, by
Which the Park Will Become a Beautiful and Spacious Playground.

Map K-2

Burnap's Plan for Krug Park, 1919

Noted on the plan is a hamlet for park workers on the north edge of the park, "Hemlock Hill" to the southwest, a sunken forest east of the "peace" theater, tennis courts and an overlook in the southwest corner, a "parkway greeting" with trimmed trees at the eastern entrance, as well as the Refractory, Children's Circus, and the Circle entrance.



Map K-3
Krug Park

Current conditions, location of major features.

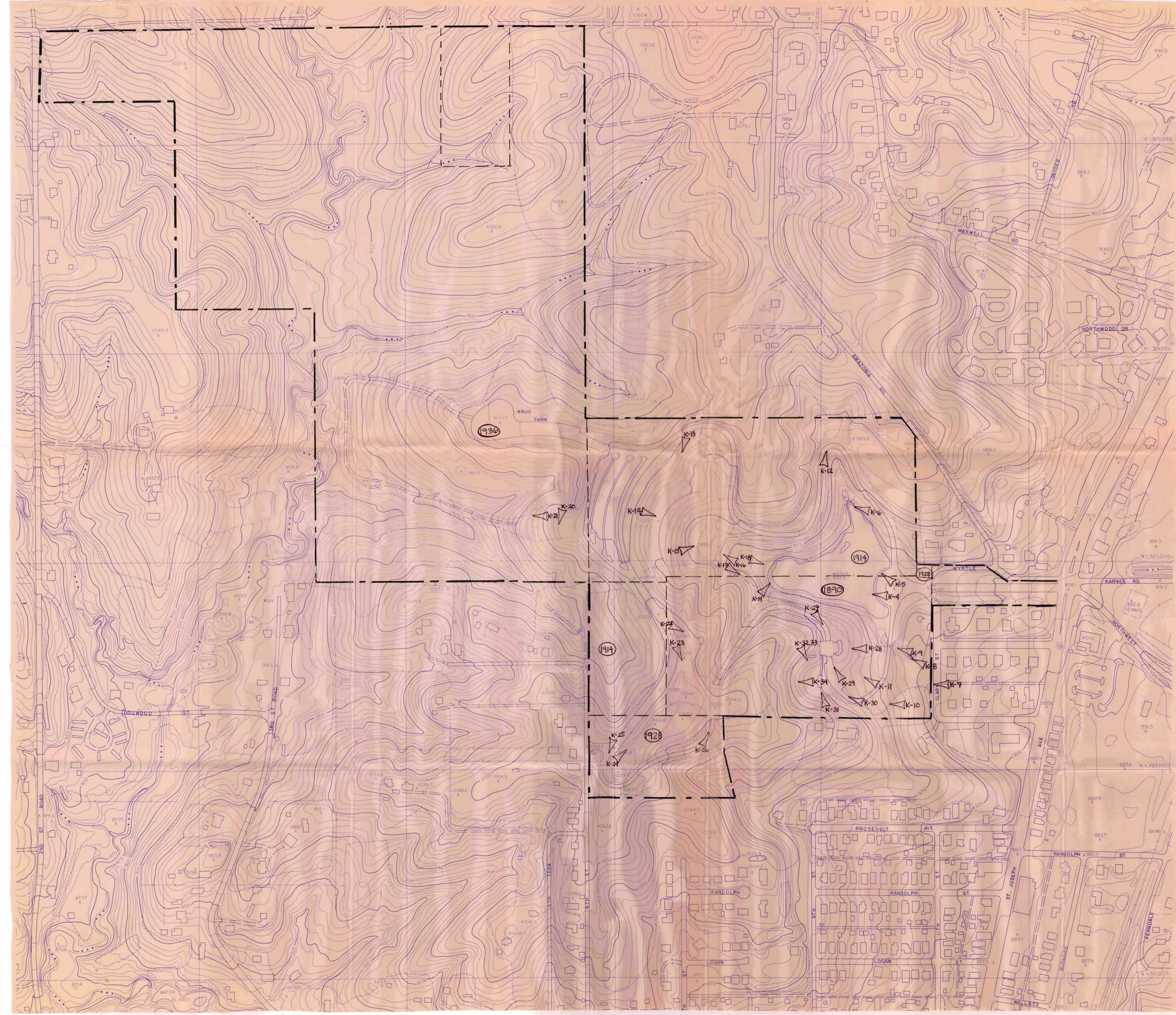
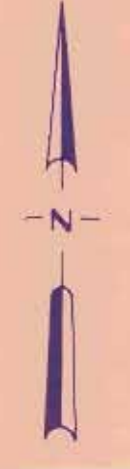
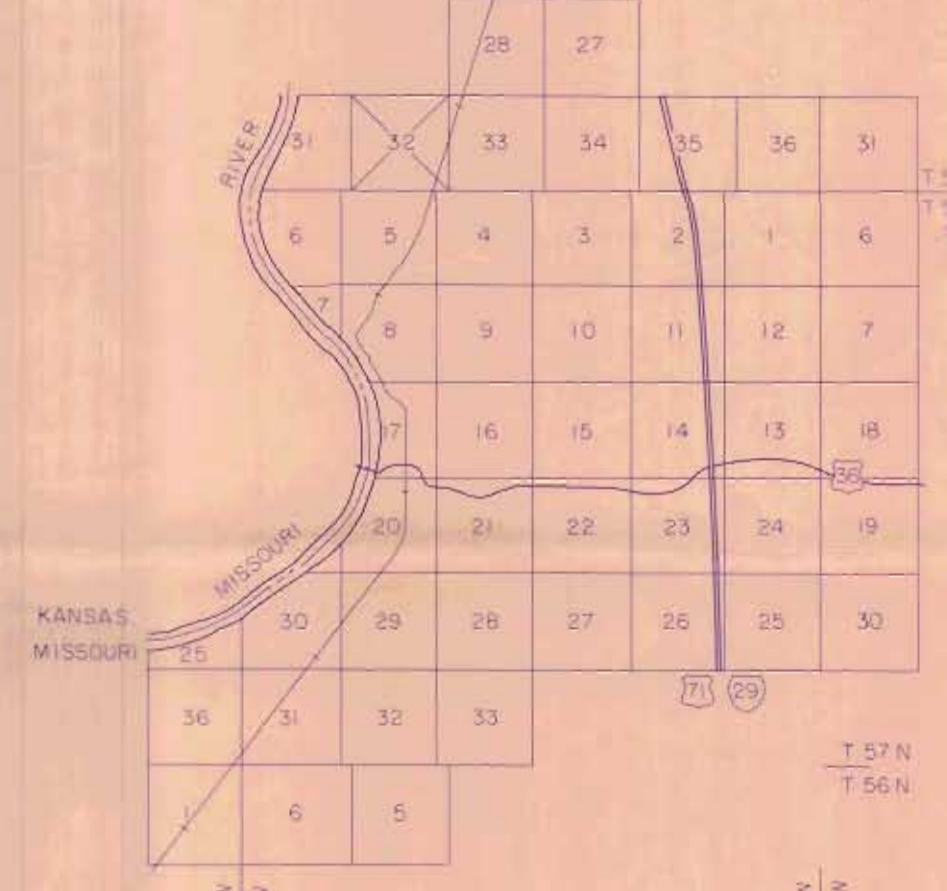
--- PARK BOUNDARY

**Map K-1
Krug Park**

Topography, current conditions, boundary expansion and location of photographs.

- LEGEND
- PAVED ROAD
 - UNPAVED ROAD
 - RAILROAD
 - ABANDONED R.R.
 - TRAIL
 - TRAIL BUILDING
 - UNDER CONSTRUCTION
 - FENCE
 - FIELD LINE
 - BRIDGE
 - CULVERT
 - LAKE OR POND
 - DRY POND
 - DRAINAGE
 - RIVER
 - DAM
 - MARSH
 - PIPELINE
 - LEVEE
 - SECTION LINE
 - TRANSMISSION TOWER
 - UNIDENTIFIABLE OBJECT
 - SIDEWALK
 - TREE OR BUSH
 - TIMBER
 - POLE
 - SILO OR TANK
 - WALL
 - SIGN
 - 700 INDEX CONTOUR
 - INTERMEDIATE CONTOUR
 - SUPPLEMENTARY CONTOUR
 - DEPRESSION
 - 735 PHOTOGRAMMETRIC SPOT ELEV.
 - PANEL
 - 672.56 BENCH MARK
 - H.P. HORIZONTAL CONTROL POINT
 - VP 672.56 VERTICAL CONTROL POINT

- KRUG PARK BOUNDARY
- - - Expansion boundary
- Year of acquisition
- △ Number & direction of photograph

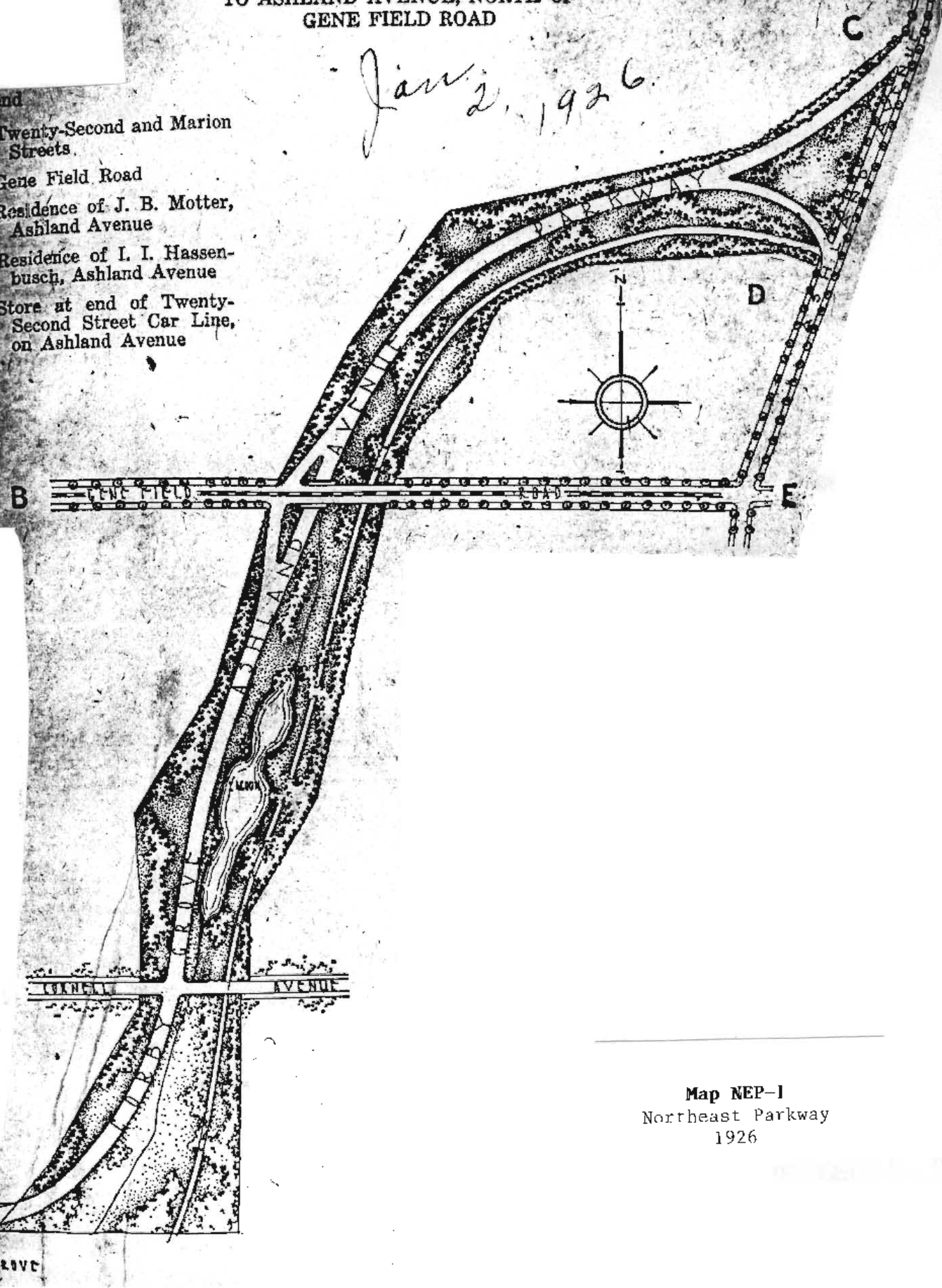


FROM THE NORTH LINE OF CORBY GROVE AT MARION STREET THROUGH A PICTURESQUE SECTION TO ASHLAND AVENUE, NORTH OF GENE FIELD ROAD

Jan 2, 1926

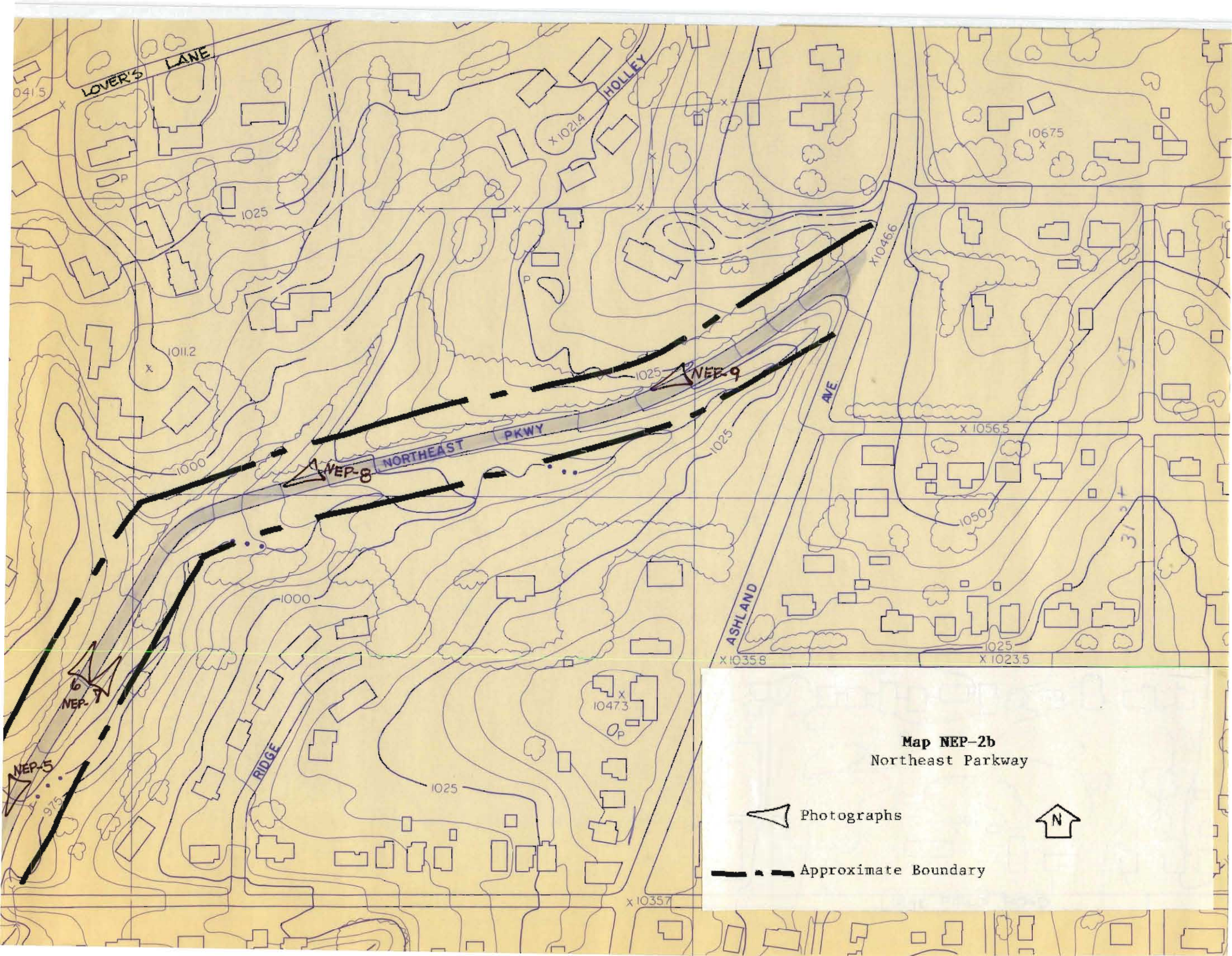
Legend

- A—Twenty-Second and Marion Streets.
- B—Gene Field Road
- C—Residence of J. B. Motter, Ashland Avenue
- D—Residence of I. I. Hassenbusch, Ashland Avenue
- E—Store at end of Twenty-Second Street Car Line, on Ashland Avenue




Map NEP-1
Northeast Parkway
1926


A
MARION STREET
CORBY GROVE

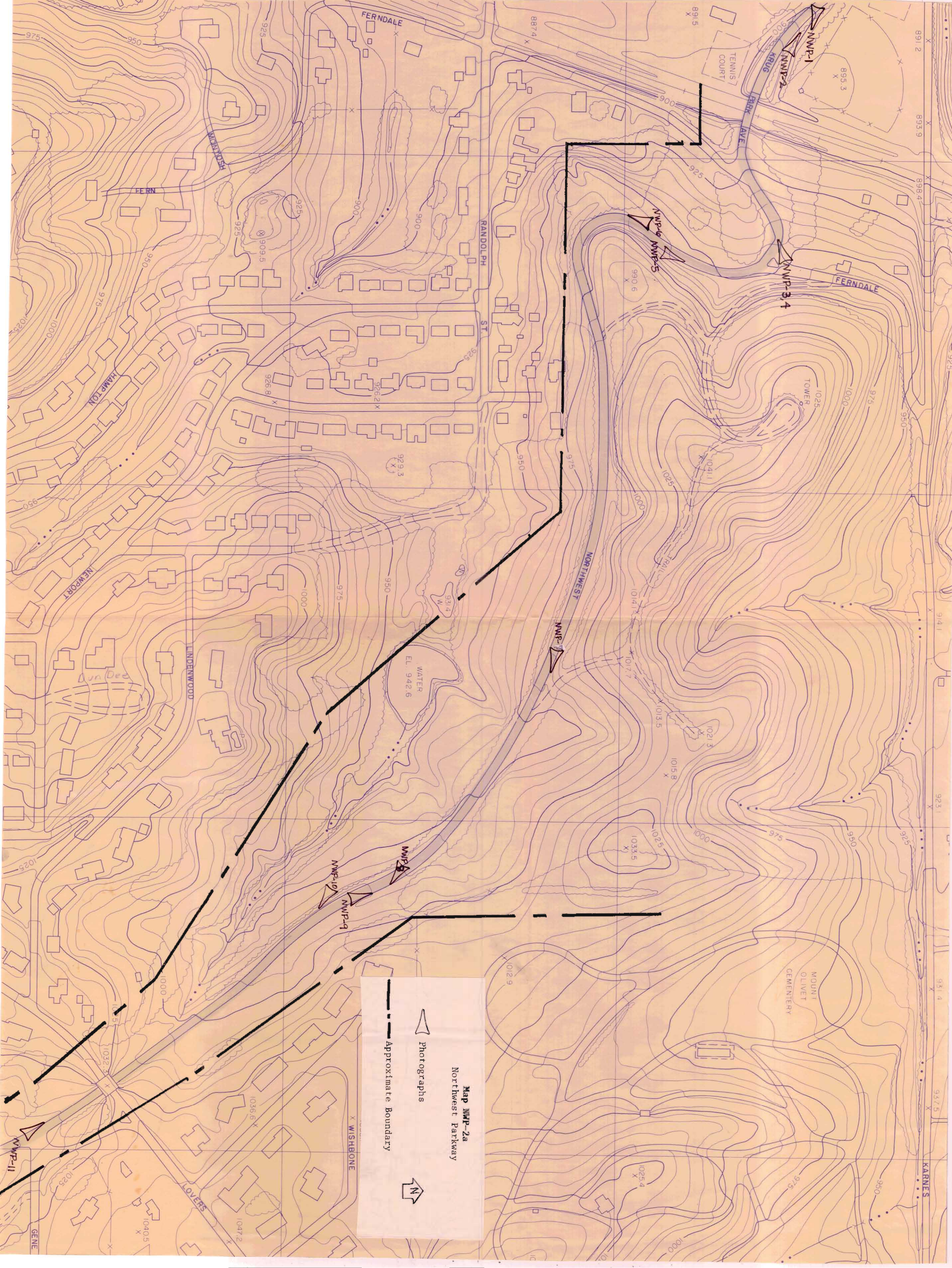


Map NEP-2b
Northeast Parkway

 Photographs



 Approximate Boundary

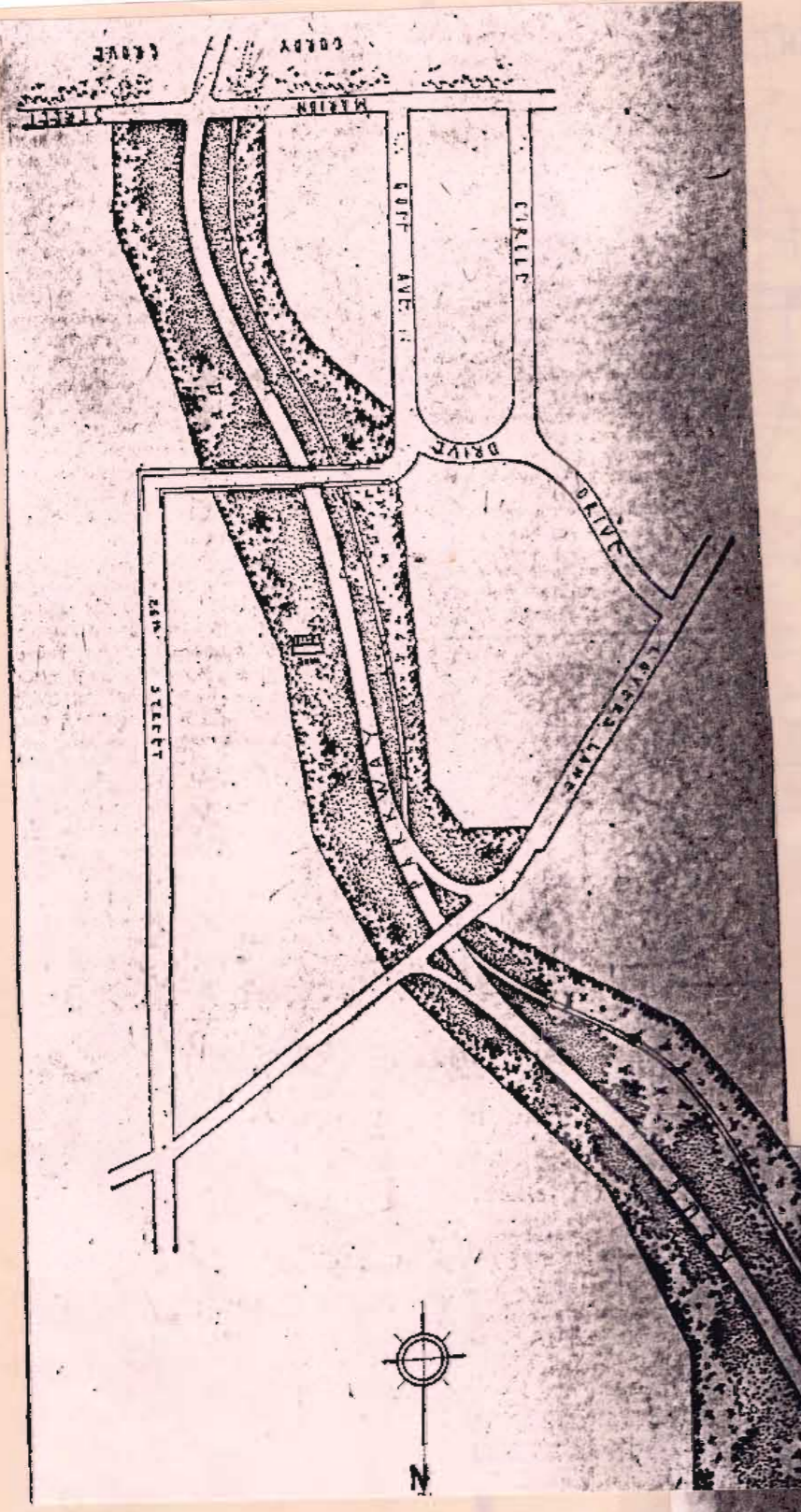


Map NWP-2a
Northwest Parkway

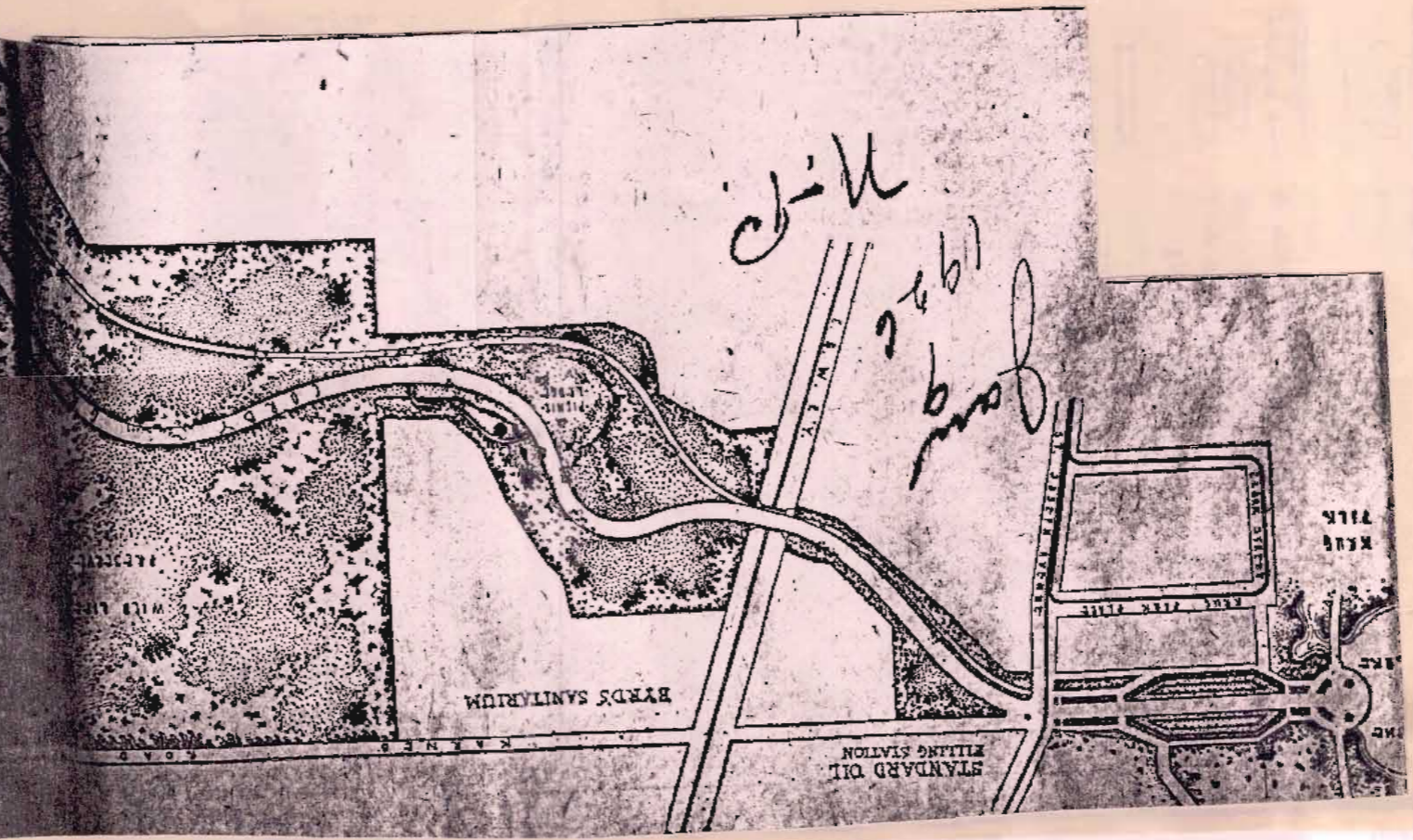
Photographs

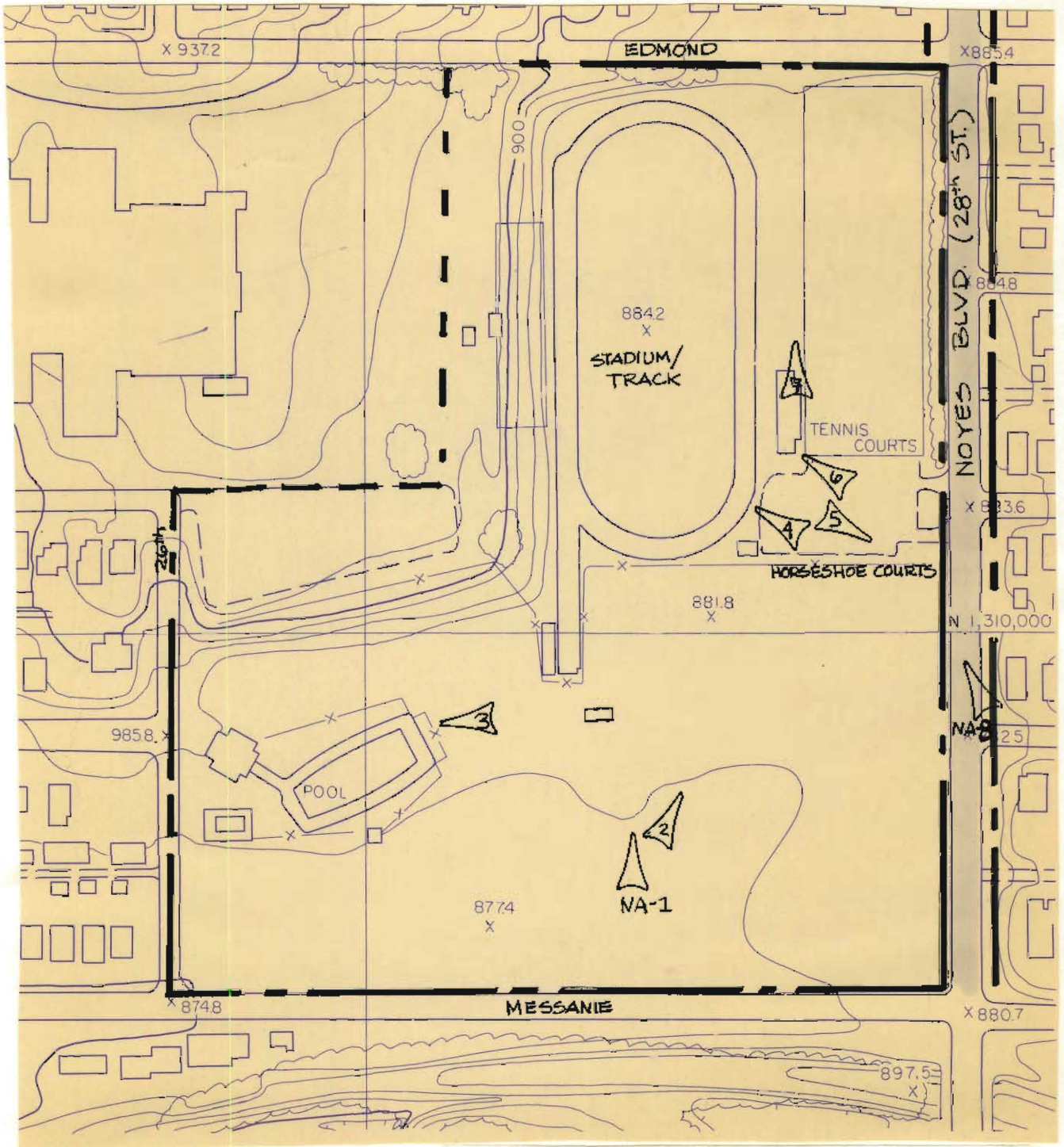
Approximate Boundary

N




Map NMP-1
Northwest Parkway
1926

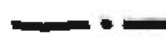


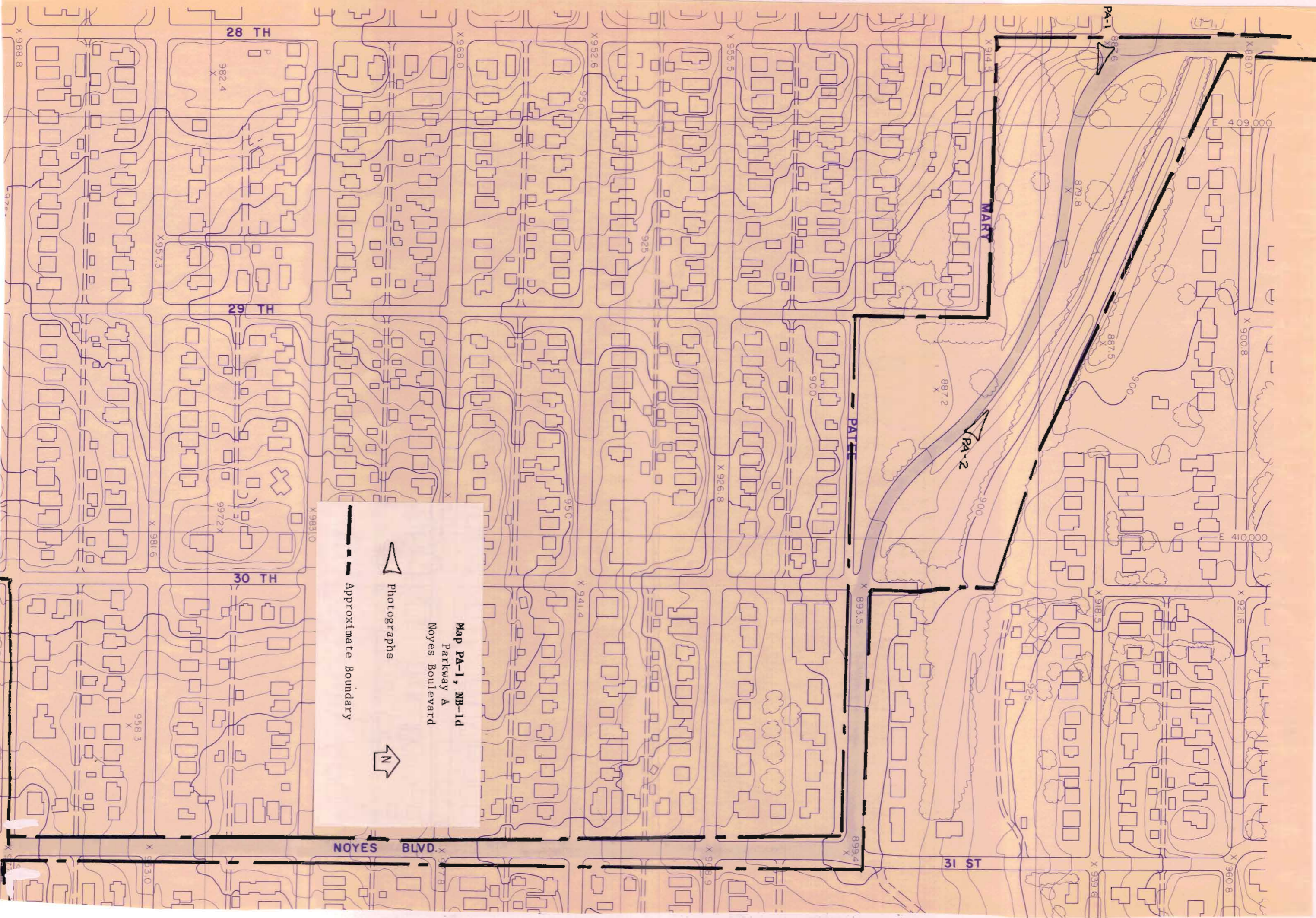


Map NA-1, NB-1c
 Noyes Athletic Field
 Noyes Boulevard

 Photographs



 Approximate Boundary



28 TH

29 TH

30 TH

31 ST

NOYES BLVD

MARY

PAT

PA-2

PA-1

982.4

997.2

958.3

950

925

950

887.2

887.5

879.8

409,000

410,000

Approximate Boundary

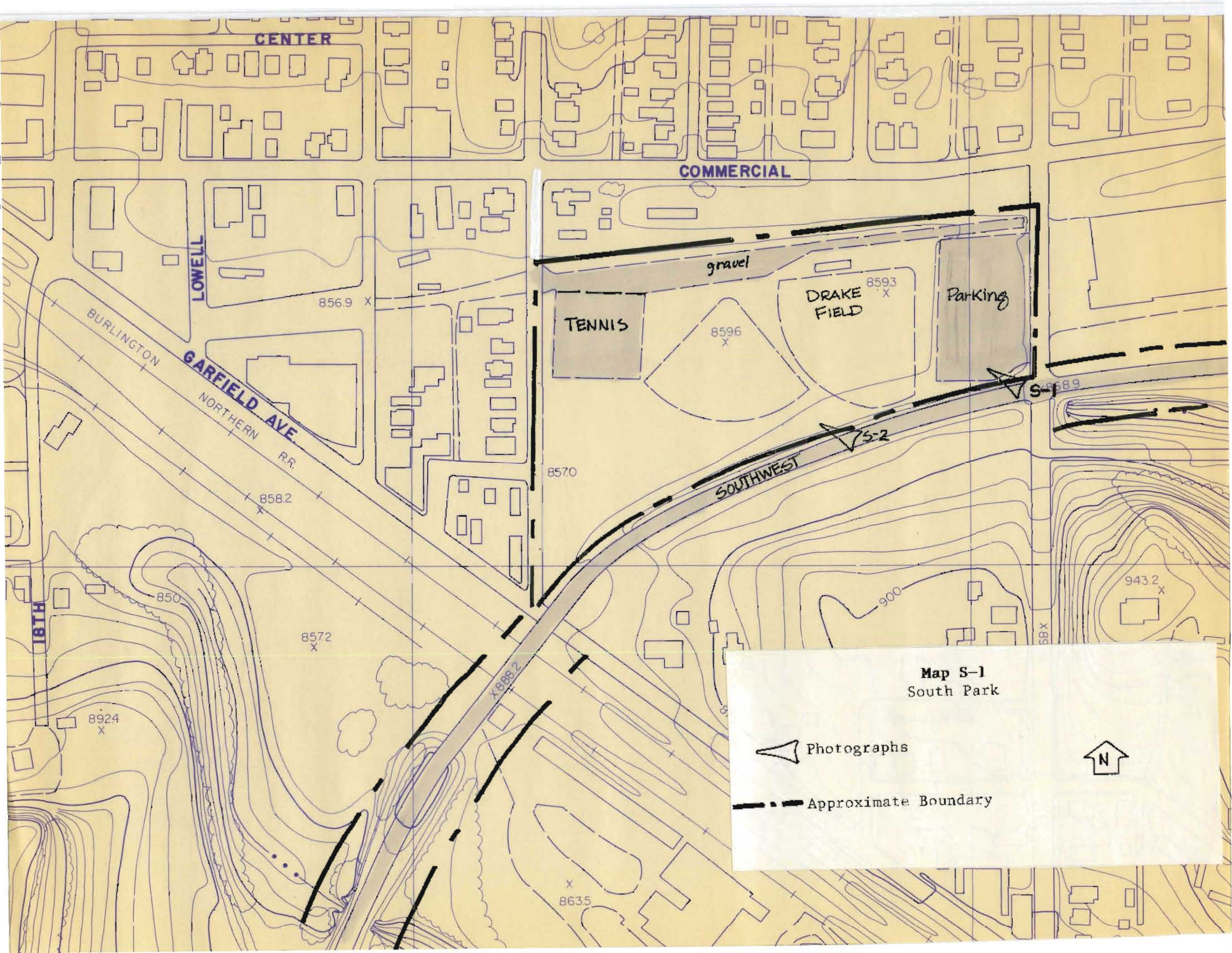


Photographs



N

Map PA-1, NB-1d
Parkway A
Noyes Boulevard



CENTER

COMMERCIAL

LOWELL

BURLINGTON
GARFIELD AVE.
NORTHERN R.R.

18TH

SOUTHWEST

gravel

TENNIS

DRAKE FIELD

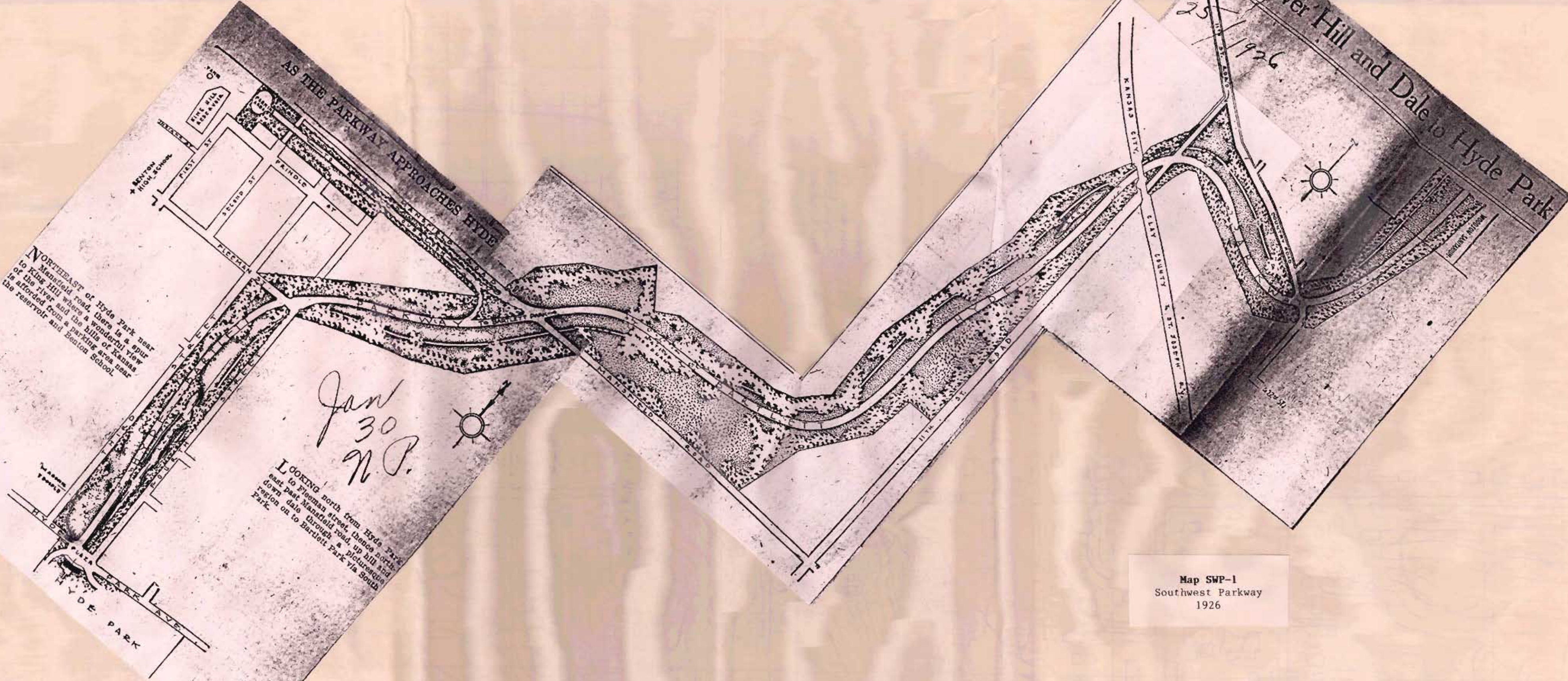
Parking

Map S-1
South Park

Photographs



Approximate Boundary

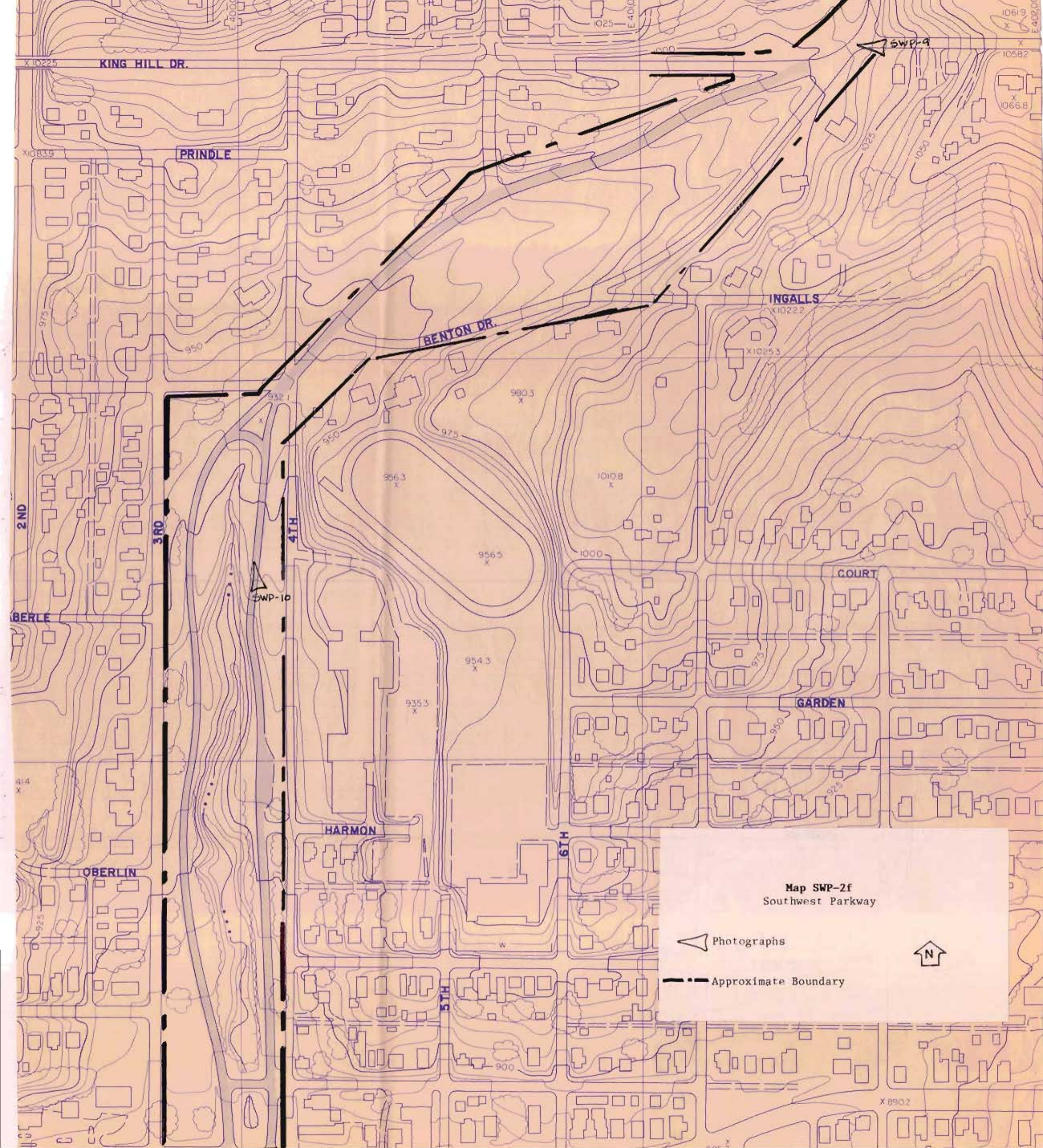


NORTHEAST of Hyde Park near Mansfield road, there is a spur of the river and the hills of Kansas is afforded from a parking area near the reservoir and Benton School.

Jan 30 9 A.M.

LOOKING north from Hyde Park east to Fleeman street, thence north down past Mansfield road, up hill and region on to Bartlett Park via South Park.

Map SWP-1
Southwest Parkway
1926

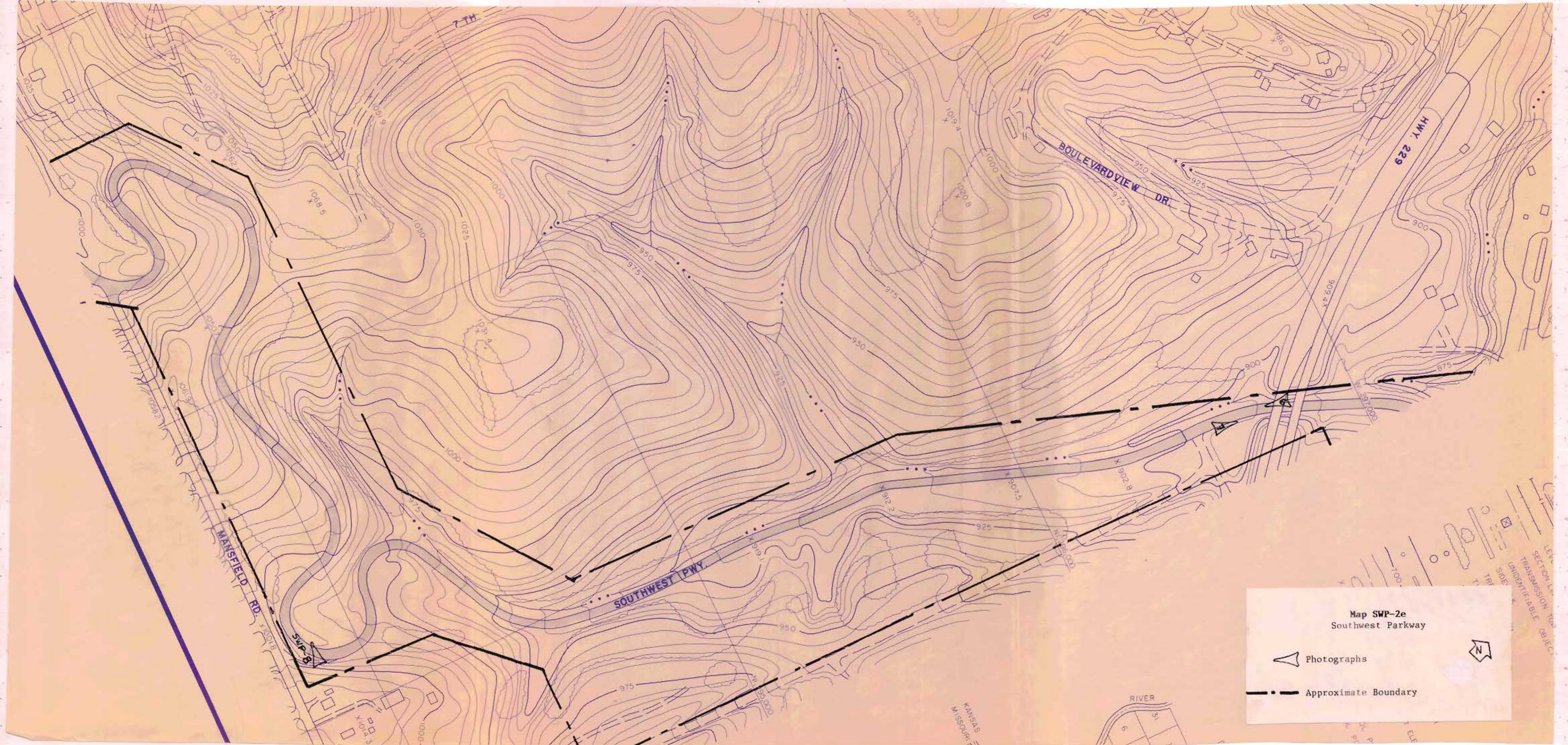


Map SWP-2f
Southwest Parkway

Photographs



Approximate Boundary



Map SWP-2e
Southwest Parkway

▲ Photographs

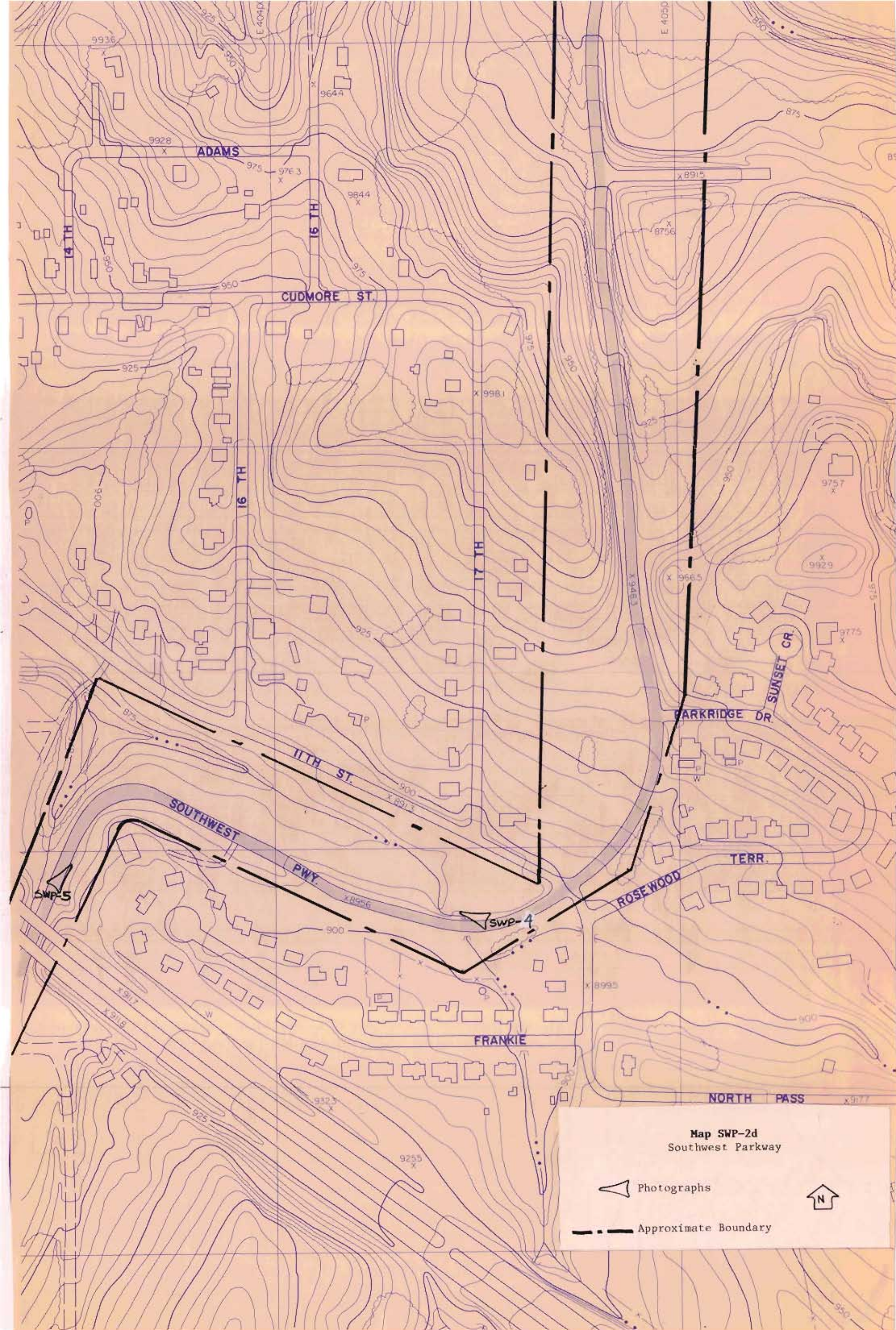
--- Approximate Boundary



SECTION LINE
UNIDENTIFIABLE OBJECT

RIVER

KANSAS
MISSOURI



Map SWP-2d
Southwest Parkway

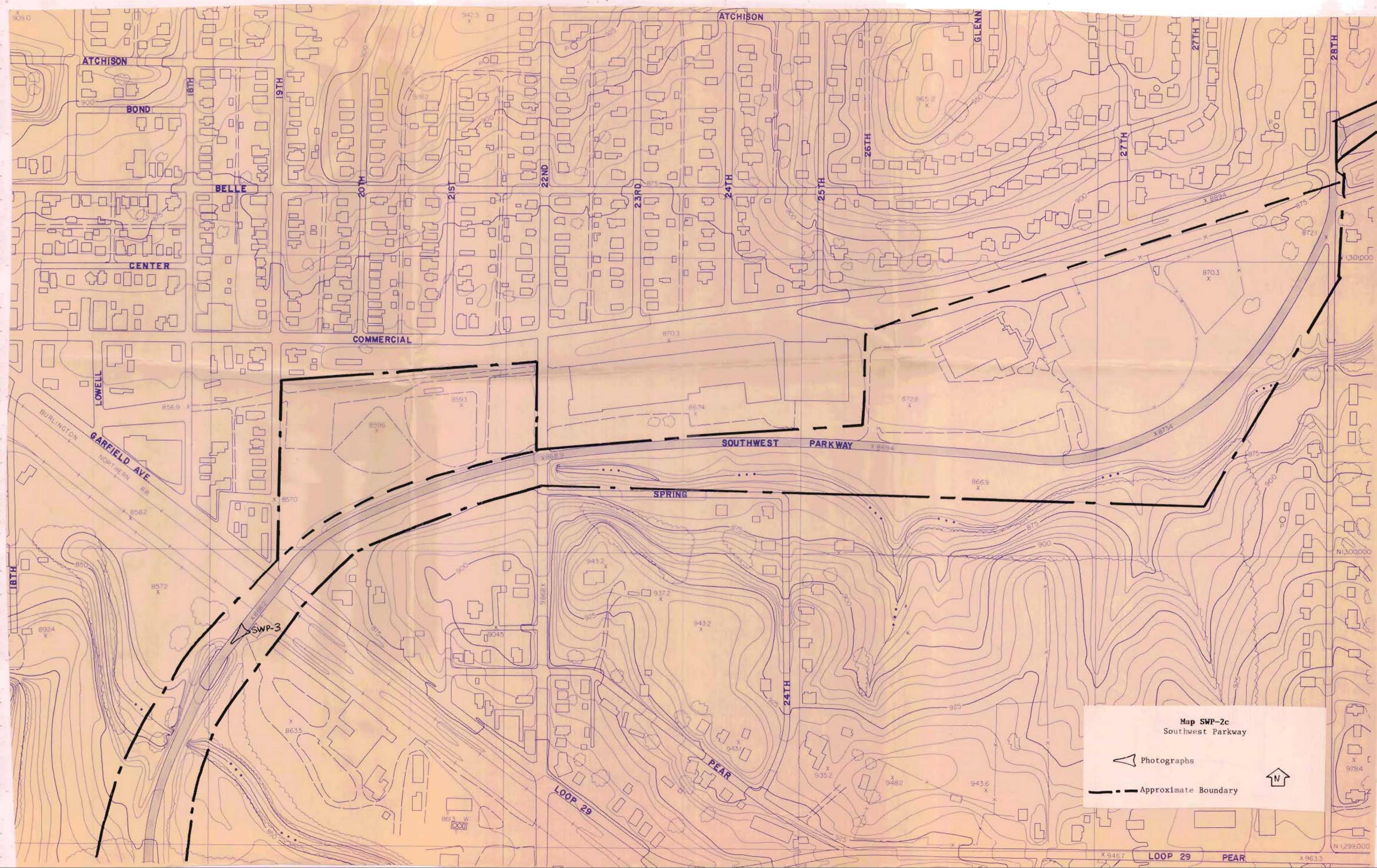


Photographs



N

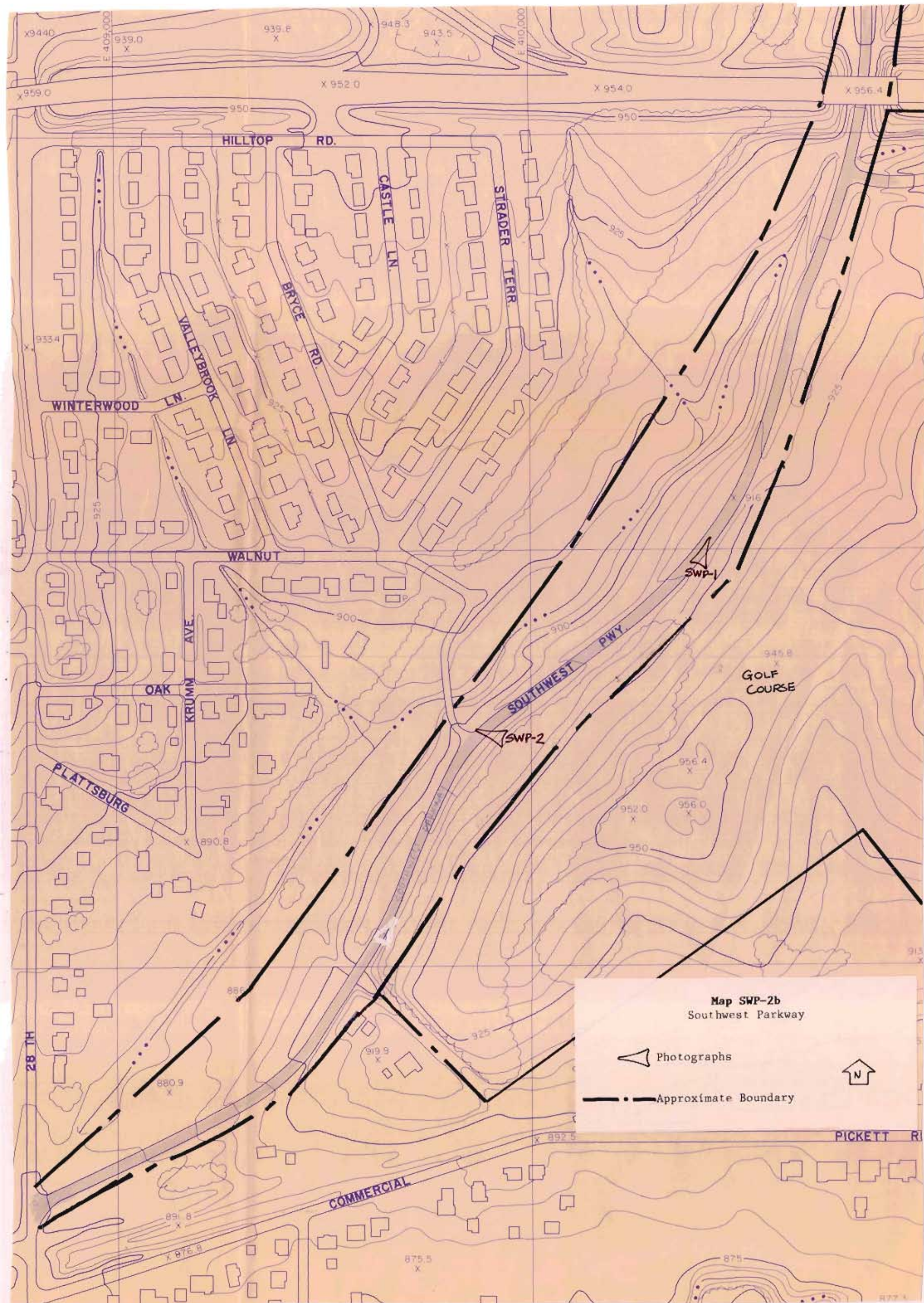
--- Approximate Boundary



Map SWP-2c
Southwest Parkway

- Photographs
- Approximate Boundary





Map SWP-2b
Southwest Parkway

▲ Photographs

- - - Approximate Boundary



PICKETT RD