

United States Department of the Interior
National Park Service

National Register of Historic Places Registration Form

1. Name of Property

historic name Palace Hotel

other names/site number M.S. Cowles & Co.; American Clothing House; Ross Hotel; J.C. Penney Co.; Bent Bar Gym; Video Plaza

2. Location

street & number 2-4 W. Ohio Street [N/A] not for publication

city or town Butler [N/A] vicinity

state Missouri code MO county Bates code 013 zip code 64730

3. State/Federal Agency Certification

As the designated authority under the National Historic Preservation Act, as amended, I hereby certify that this nomination request for determination of eligibility meets the documentation standards for registering properties in the National Register of Historic Places and meets the procedural and professional requirements set forth in 36 CFR Part 60. In my opinion, the property meets does not meet the National Register criteria. I recommend that this property be considered significant nationally statewide locally. (see continuation sheet for additional comments).

Signature of certifying official/Title Claire F. Blackwell/ Deputy SHPO Date _____

Missouri Department of Natural Resources
State or Federal agency and bureau

In my opinion, the property meets does not meet the National Register criteria. (See continuation sheet for additional comments.)

Signature of certifying official/Title _____ Date _____

State or Federal agency and bureau _____

4. National Park Service Certification

I hereby certify that the property is:

- entered in the National Register.
 See continuation sheet.
- determined eligible for the National Register.
 See continuation sheet.
- determined not eligible for the National Register.
- removed from the National Register.
- other, (explain):

Signature of the Keeper _____

Date of Action _____

Palace Hotel
Name of Property

Bates County, Missouri
County and State

5. Classification

Ownership of Property
(Check as many boxes as apply)
 private
 public-local
 public-State
 public-Federal

Category of Property
(Check only one box)
 building(s)
 district
 site
 structure
 object

Number of Resources within Property
(Do not include previously listed resources in the count.)

| Contributing | Noncontributing | |
|--------------|-----------------|------------|
| 1 | 0 | buildings |
| 0 | 0 | sites |
| 0 | 0 | structures |
| 0 | 0 | objects |
| 1 | 0 | Total |

Name of related multiple property listing
(Enter "N/A" if property is not part of a multiple property listing.)

Number of contributing resources previously listed in the National Register

N/A

N/A

6. Function or Use

Historic Functions
(Enter categories from instructions)

Current Functions
(Enter categories from instructions)

DOMESTIC: hotel
COMMERCE/TRADE: specialty store
COMMERCE/TRADE: department store
COMMERCE/TRADE: business
SOCIAL: clubhouse

WORK IN PROGRESS
COMMERCE/TRADE: specialty store
RECREATION/CULTURE: sports facility

7. Description

Architectural Classification
(Enter categories from instructions)

Materials
(Enter categories from instructions)

Italianate

foundation STONE
walls BRICK
roof ASPHALT
other

Narrative Description

(Describe the historic and current condition of the property on one or more continuation sheets.)

Palace Hotel
Name of Property

Bates County, Missouri
County and State

8. Statement of Significance

Applicable National Register Criteria

(Mark "x" in one or more boxes for the criteria qualifying the property for National Register listing.)

- A** Property is associated with events that have made a significant contribution to the broad patterns of our history.
- B** Property is associated with the lives of persons significant in our past.
- C** Property embodies the distinctive characteristics of a type, period, or method of construction or represents the work of a master, or possesses high artistic values, or represents a significant and distinguishable entity whose components lack individual distinction.
- D** Property has yielded, or is likely to yield, information important in prehistory or history.

Criteria Considerations

(Mark "x" in all the boxes that apply.)

Property is:

- A** owned by a religious institution or used for religious purposes.
- B** removed from its original location.
- C** a birthplace or grave.
- D** a cemetery.
- E** a reconstructed building, object, or structure.
- F** a commemorative property.
- G** less than 50 years of age or achieved significance within the past 50 years.

Narrative Statement of Significance

(Explain the significance of the property on one or more continuation sheets.)

Areas of Significance

(Enter categories from instructions)

- COMMERCE/TRADE
- ARCHITECTURE

Period of Significance

1879-1952

Significant Dates

N/A

Significant Person

(Complete if Criterion B is marked above)

N/A

Cultural Affiliation

N/A

Architect/Builder

Hannah, Captain John Westley, Shaw, T.A./Curier, Samuel;
McBrides and Helms

9. Major Bibliographical References

Bibliography

(Cite the books, articles, and other sources used in preparing this form on one or more continuation sheets.)

Previous documentation on file (NPS):

- preliminary determination of individual listing (36 CFR 67) has been requested
- previously listed in the National Register
- previously determined eligible by the National Register
- designated a National Historic Landmark
- recorded by Historic American Buildings Survey # _____
- recorded by Historic American Engineering Record # _____

Primary location of additional data:

- State Historic Preservation Office
 - Other State agency
 - Federal agency
 - Local government
 - University
 - Other
- Name of repository: Institute for Sustainable Development

United States Department of the Interior
National Park Service

National Register of Historic Places Continuation Sheet

Section number 7 Page 1

**Palace Hotel
Bates County, Missouri**

Narrative Description

Summary:

The Palace Hotel, a three-story, high style, Italianate building, is located on the northeast corner of the Courthouse Square in Butler, Bates County, Missouri. The hotel, which is a wood framed building faced with red brick and painted white, was built by Samuel Currier and Messrs. McBrides and Helms (two of each) in 1879. Nestled at the northwest corner of Main and Ohio Streets and at the eastern end of a row of attached buildings, the overall plan of the Palace Hotel is rectangular, and the structural system is load-bearing brick. The building's foundation is stone, and the flat-shaped roof is asphalt. The façade (south elevation) and east elevation are the most visible and ornamented, with the second and third stories of the façade and the east elevation containing seven vertical bays of windows and fourteen vertical bays of windows, respectively. The building's exterior maintains a high degree of integrity. Significant Italianate architectural features, such as a rectangular pediment resting on an elaborate bracketed cornice, and arched one-over-one light double-hung sash windows with segmental arches, stone sills and keystones, are visible on the façade. The hotel originally featured a second story balcony that encompassed the façade and east elevation and was accessed through double doors on the north elevation, but the balcony collapsed sometime after 1906. The balcony was never rebuilt, but sometime later a modern awning was erected just above the first floor extending along the entire south elevation and two bays of the east elevation. The interior of the Palace Hotel requires extensive renovation in order to restore it to its original appearance, and plans for such improvements are presently underway. Despite the current condition of the interior, the present condition of the Palace Hotel's exterior Italianate features, the overall condition of the building, and the lack of numerous alterations contribute to its high degree of historical integrity.

Exterior:

The Palace Hotel, whose highly ornamented façade (south elevation) faces the Bates County Courthouse, is a three-story, wood framed, red brick building constructed in 1879. Sometime later the entire building was painted white. Included as Figures 1 through 8 are photos and sketches taken of the Palace Hotel throughout its history. The Palace Hotel is located at the eastern end of a row of attached commercial buildings located on Ohio Street at the corner of Main Street in Butler, Missouri (see Photo 1). The corner storefront entrance that provides access to the first floor is recessed, and there are three plate glass windows supported by brick bulkheads immediately to the west of the entrance (see Photo 2). Further west is the main hotel entrance and interior stairwell that provides access to the second floor (see Photo 3). The transom is covered by a modern awning, which replaces the historic second floor iron balcony that originally spanned the façade, east elevation, and north elevation (see Figure 1). Supported by evenly spaced columns and featuring a railing along its perimeter, the balcony collapsed sometime after 1906. Just below the balcony remained twenty vertical wood panels spanning the entire façade and six vertical wood panels encompassing two bays of the east elevation (see Figure 2). When the J.C. Penney Co. inhabited the building in 1926, the company erected a J.C. PENNEY CO. sign on top of the panels on the façade (see Figure 6). It is believed that the present awning was erected around the same time as when J.C. Penney Co. took control of the building. The J.C. PENNEY CO. sign no longer remains (see Figure 8).

United States Department of the Interior
National Park Service

National Register of Historic Places Continuation Sheet

Section number 7 Page 2

**Palace Hotel
Bates County, Missouri**

The 50-foot wide, seven-bayed façade has seven, evenly spaced, tall, narrow, arched one-over-one light double-hung sash windows with individual sills on the second story and a continuous sill on the third story (see Photo 2). Each window has an elaborated window crown in an inverted-U shape, and there are single two-story protruding brick columns on the corners of the façade and also on either side of the center windows on the second and third stories (see Photo 4). The roofline has an elaborate bracketed cornice with a rectangular pediment centered on top (see Photo 5). The flat roof is concealed from view by the cornice and pediment detail.

The 100-foot long, east elevation is fourteen bays across with each bay of the second and third stories containing one tall, narrow, arched one-over-one, light double-hung sash window with an individual sill and elaborated window crown in an inverted-U shape (see Photo 6). The first story of the east elevation contains four small, single pane windows, one in each of bays five, eight, eleven, and fourteen. In looking at historical photos of the building, it appears the original parapet of the hotel's east elevation was a uniform height from the south end to the north end and may have featured a decorative cornice (see Figure 1). Presently, there is no decorative cornice at the roofline and the roofline is no longer a uniform height from one end to the other. The roof's continuous parapet extends approximately 12" high at the south end, lowers a step at each of bays four, six, and twelve leaving a 6" parapet at the north end. Also, the hotel historically featured seven chimneys spread along the eastern elevation (see Figure 1). Only remnants of these chimneys are visible between bays one and two, bays two and three, bays six and seven, bays nine and ten, bays ten and eleven, bays eleven and twelve, and bays thirteen and fourteen (see Photo 6).

The north elevation, which is also the rear of the building, is six bays wide (see Photo 6). The first floor of the elevation contains two cast iron store entrances, one spanning the first three bays and framed with protruding brick columns and decorative capitals and one with similar features spanning the fourth and fifth bays. At the far west side of the first story is a small recessed wooden door. The north elevation's second floor has a tall, narrow window in each bay except for the third. The third bay has a set of recessed double doors now blocked by a metal grate. Historically, this set of doors provided the entrance to the second floor balcony. The third floor has one tall, narrow window in each of the first three bays. There is also evidence of a fire escape in the third bay. The fourth through sixth bays are covered by sheet metal. It is believed that this portion of the third floor originally contained an outside porch that was later infilled.

The west elevation abuts the Rexall Drugs building with only the third story visible above the roofline (see Photo 1). The elevation is fourteen bays wide; however, the eleven, tall, narrow windows, some of which are covered by boards, of this elevation's third floor are not spaced evenly. There is one window located in the first bay, two windows between the second and third bays, two windows between the fifth and sixth bays, two windows between the sixth and seventh bays, one window between the eighth and ninth bays, one window in the tenth bay, one window between the eleventh and twelfth bays, and one window between the thirteenth and fourteenth bays. The west elevation has a stepped parapet roofline similar to the east elevation.

Interior:

The floor plan of each of the Palace Hotel's three stories varies greatly (see Figures 9, 10, and 11). This is not unusual for a building whose floors each served a different function. The first floor, accessed through the recessed corner door, is almost entirely open space with a wall division at the north end approximately halfway

United States Department of the Interior
National Park Service

National Register of Historic Places Continuation Sheet

Section number 7 Page 3

Palace Hotel
Bates County, Missouri

between bays eleven and fourteen (see Photo 7). The floor is tile and the ceiling has fluorescent lighting. Toward the north end of the building are two rooms that are separated from the main room by a stud wall. Access to these rooms is via a short stairway that leads up to the room on the west. A narrow stairway in the west room connects it to the room on the east, where there is a bathroom and stairs leading to the basement. The dirt floor basement is a very small room in which crates are stacked.

The stairway entrance to the second floor is located to the left of the first floor storefront windows (see Photo 3). The ceiling above this stairway has decorative patterning (See Photo 8). This stairway does not provide access to the third floor. A second floor interior staircase with wood paneling on the wall below a wooden hand railing, located east of the stairway from the street to the second floor, provides separate access to the third floor (see Photo 9). This interior stairway is located at the rounded south end of a hallway that extends the length of the second floor to the rear north end double doors that originally opened to the second floor balcony (see Photo 10). Unlike the first floor, the second floor contains many small, private rooms used as suites by the hotel guests along the eastern side of the building (see Photo 11). Each doorway to the rooms has a single window above it framed in wood, and along the hallway the lower third of the wall has wood paneling similar to the stairway. Along the western portion of the building are larger rooms, which were used as the dining room, kitchen and bathroom facilities.

The third floor contains a large open ballroom along the eastern side of the building for social gatherings and a dining room and kitchen along the western half (see Photo 12). A dumb waiter was located along the west wall in the center of the building for easy transport of food and dishes between the second and third floors. Wood framing now separates the large ballroom into two smaller rooms. The current condition of the second and third floor interior requires extensive remodeling prior to further usage. Paint and wallpaper is falling from the walls while boards and glass are strewn on the floor.

Alterations and Integrity Issues:

The Palace Hotel was originally built in 1879. According to announcements in the Bates County Record, the Palace Hotel building received renovations in 1897. During that year it is reported that the office will be located on the second floor and every room will be "thoroughly overhauled."¹ In addition it is also later reported that the corner room is being "overhauled and rebuilt."² These alterations included more light and more windows as well as a new steel ceiling and new floor.³ No other information is provided as to the type or extent of the renovations; however, it is suspected that these renovations included the relocation of the hotel's original main entrance to its present location. The question to be raised is whether or not the Palace Hotel's main entrance was originally built at the center of the façade or at its present location at the west end of the façade, and consequently, whether or not the original plan featured one stairway connecting all three floors or two disconnected stairways, one leading from the ground level to the second floor and the other leading from the second floor to the third floor. Five slender iron columns are spread throughout the center of the building's first floor. These columns correspond to the interior staircase above that leads from the second floor to the third floor. Based on structural engineering analysis, it is believed that the main entrance originally was located in the center of the façade directly underneath the current interior stairway and that the stairway

¹ "Local Items," Bates County Record 12 June 1897: N. pag.

² "Local Items," Bates County Record 14 Aug. 1897: N. pag.

³ American Clothing House. Advertisement. Bates County Record 26 June 1897: N. pag.

United States Department of the Interior
National Park Service

National Register of Historic Places Continuation Sheet

Section number 7 Page 4

**Palace Hotel
Bates County, Missouri**

originally began at ground level and connected all three floors. If one continuous stairway was built, it is assumed that the original main entrance and first floor stairway was removed and relocated to its current position when renovations were made in 1897. Sanborn Fire Insurance Maps from as early as 1885 do show a stairway located in the center of the façade and not on the western end of the façade as is now the case. All that being said, it is possible that original construction and placement of the iron columns merely provided for the option of a continuous stairway from the first to the third floors that was never actually built. If the architects and builders knew early on that the first floor would be used for commercial use as a clothing store not directly associated to the activities of the hotel, there would be no need for one continuous stairway. In fact, a continuous stairway might not be conducive to the business of either floor. It is hard to determine whether or not the current west end entrance is the historic entrance without further evidence, such as photographs or written documentation. However, the changes made in 1897 appear to correspond to these presumptions, and based on the results of structural engineering analysis, it is believed that the main entrance and one continuous stairway were originally located in the center of the façade and moved sometime later.

Other changes to the Palace Hotel included the collapse of the second floor balcony, the changes to the roofline, and the alterations to the building's interior. While changes were made to the Palace Hotel in 1897 and may have been at other undocumented times, the overall exterior of the Palace Hotel has maintained a high degree of integrity due to the preservation of the fine Italianate ornamentation. On the exterior, age has caused the white paint that covers the red brick to peel; however, the building is still a significant representation of this architectural style. While the Palace Hotel's original iron balcony collapsed and was replaced by a modern awning, historical integrity has not been comprised due to the preservation of other fine Italianate architectural features. In addition, with plans currently underway to restore the Palace Hotel to its original appearance, it is exciting to think that the building will soon look just as it did after its original construction.

National Register of Historic Places
Continuation Sheet

Section number 7 Page 5

Palace Hotel
Bates County, Missouri

FIGURE 1: Palace Hotel ca. 1900

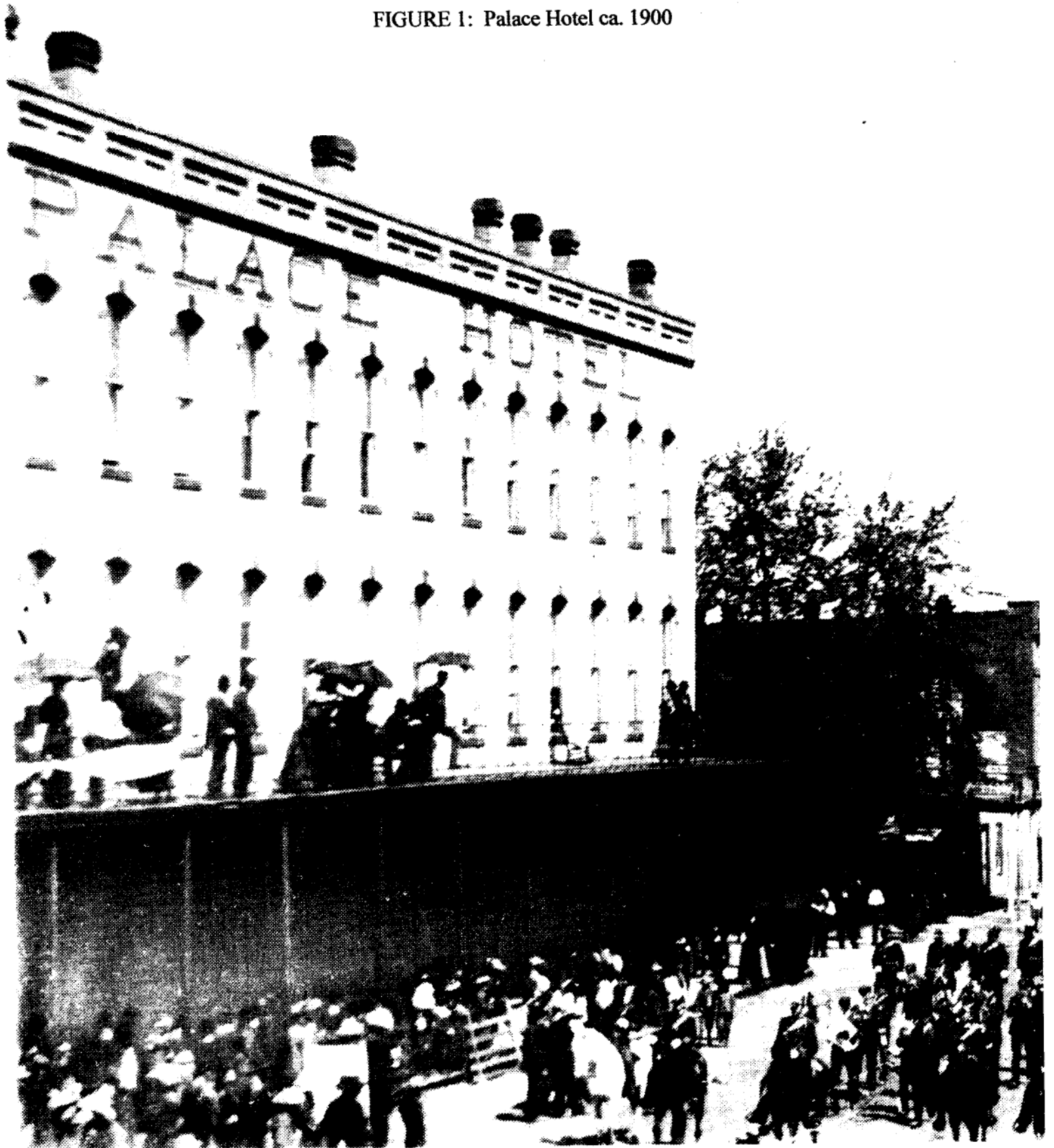


FIGURE 2: Palace Hotel ca. 1900

Palace Hotel
Bates County, Missouri



NORTH SIDE SQUARE BUTLER, MO.

Photo by Lippitt

FIGURE 3: Palace Hotel ca. 1900

Palace Hotel
Bates County, Missouri

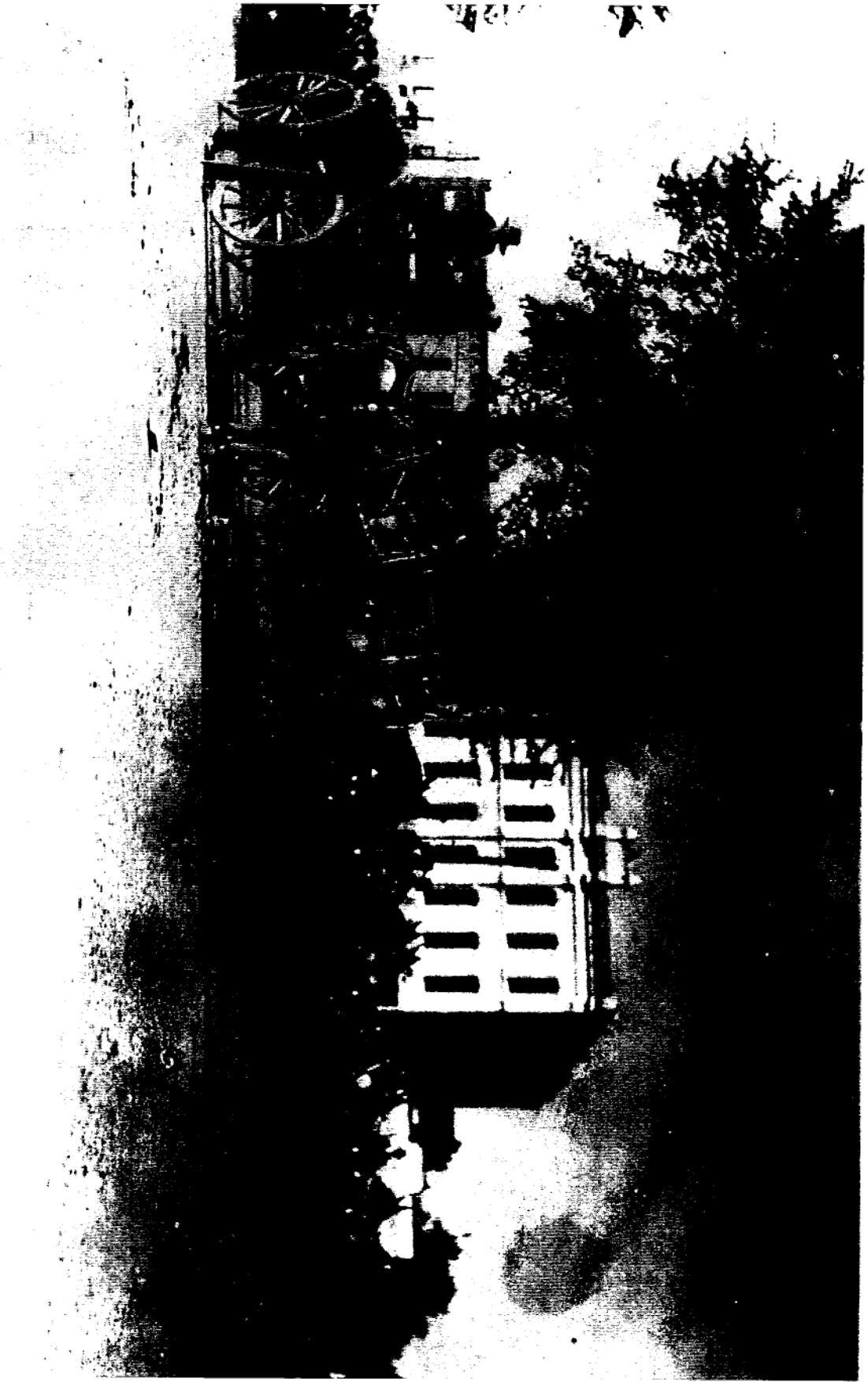


FIGURE 4: Palace Hotel ca. 1900

Palace Hotel
Bates County, Missouri



FIGURE 5: Palace Hotel ca. 1900

Palace Hotel
Bates County, Missouri

Section number 7 Page 9
Elks Club, Biber, Mo.

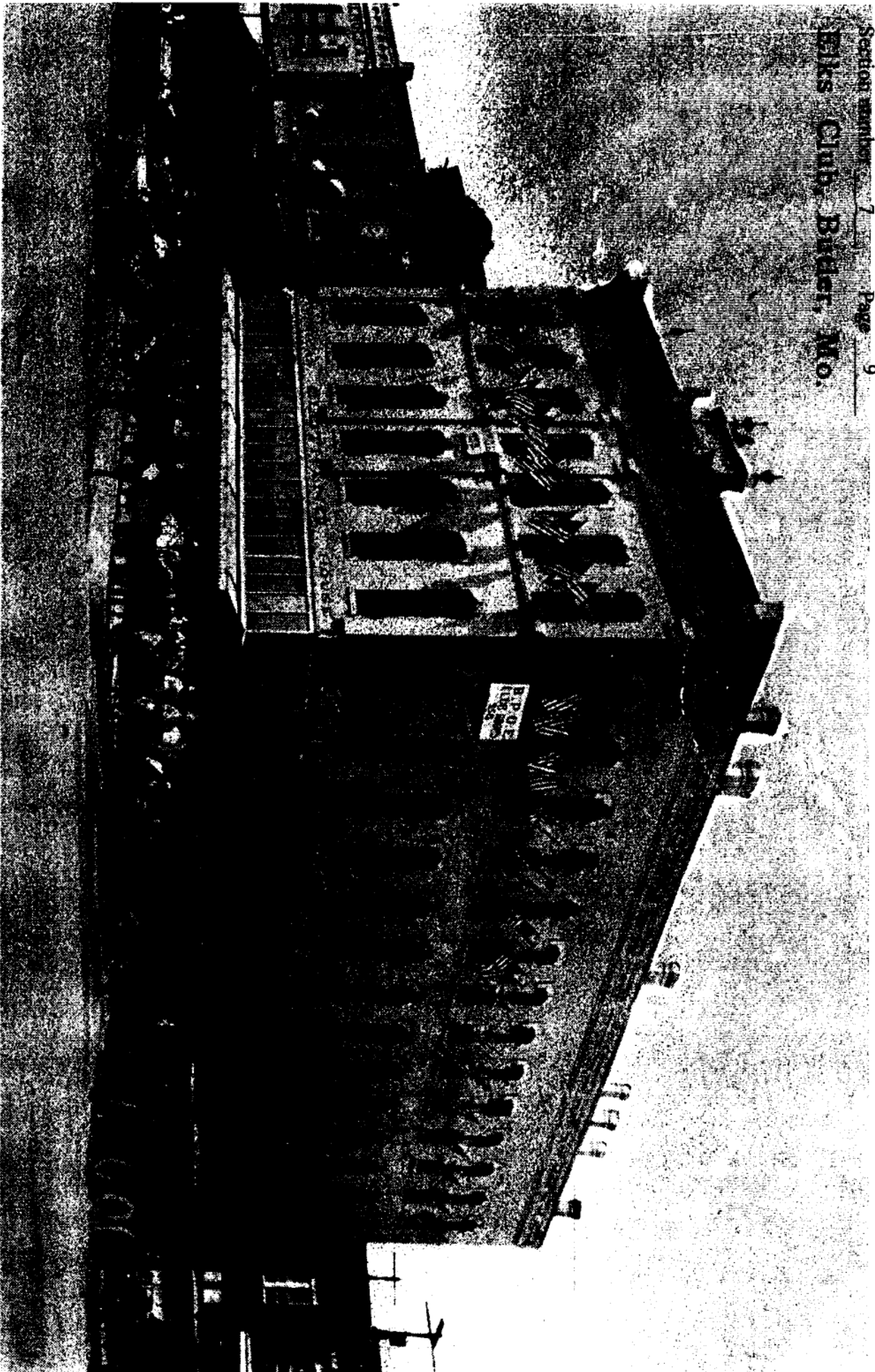


FIGURE 6: Palace Hotel ca. 1950

Palace Hotel
Bates County, Missouri

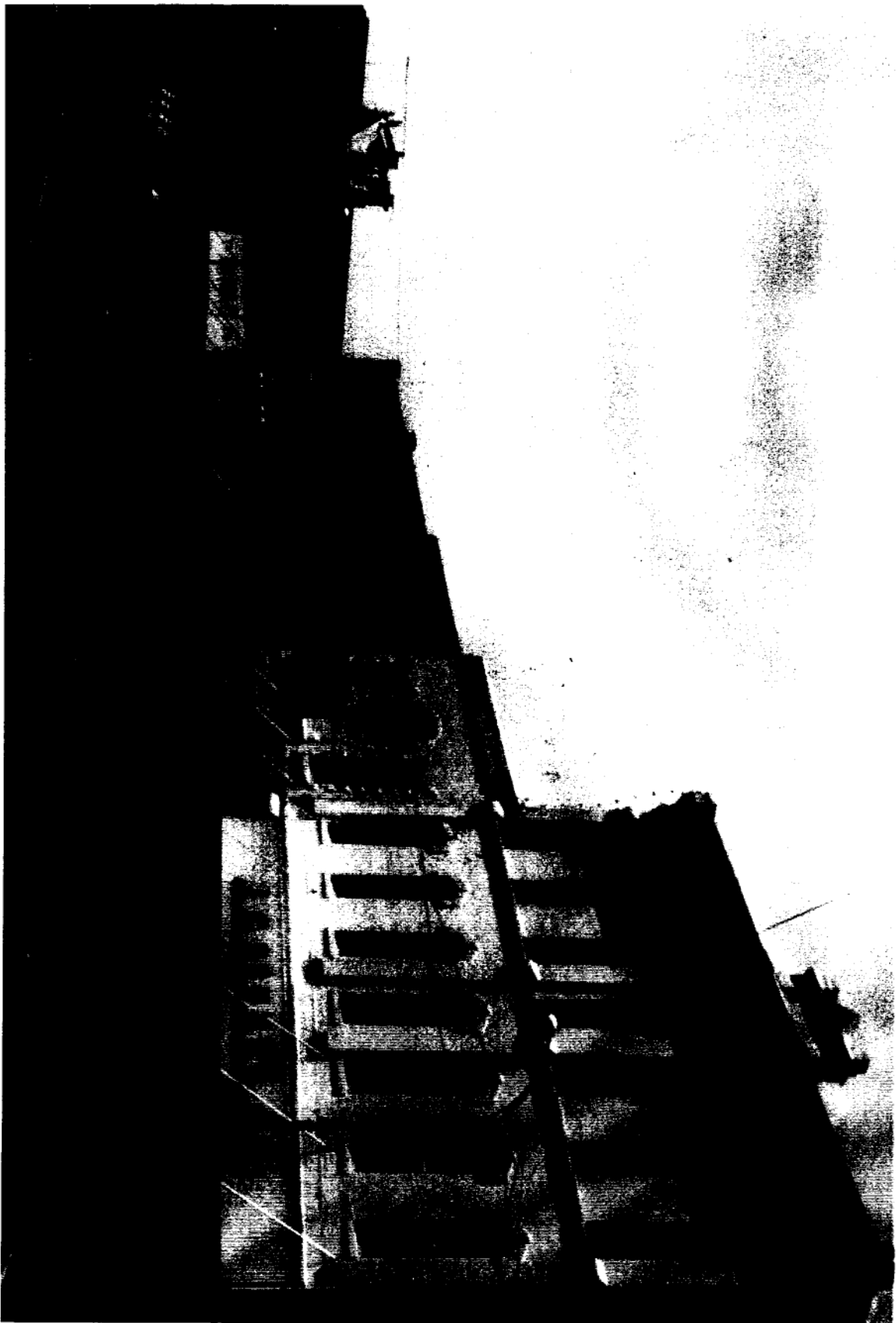


FIGURE 7: Palace Hotel ca. 1950

Palace Hotel
Bates County, Missouri



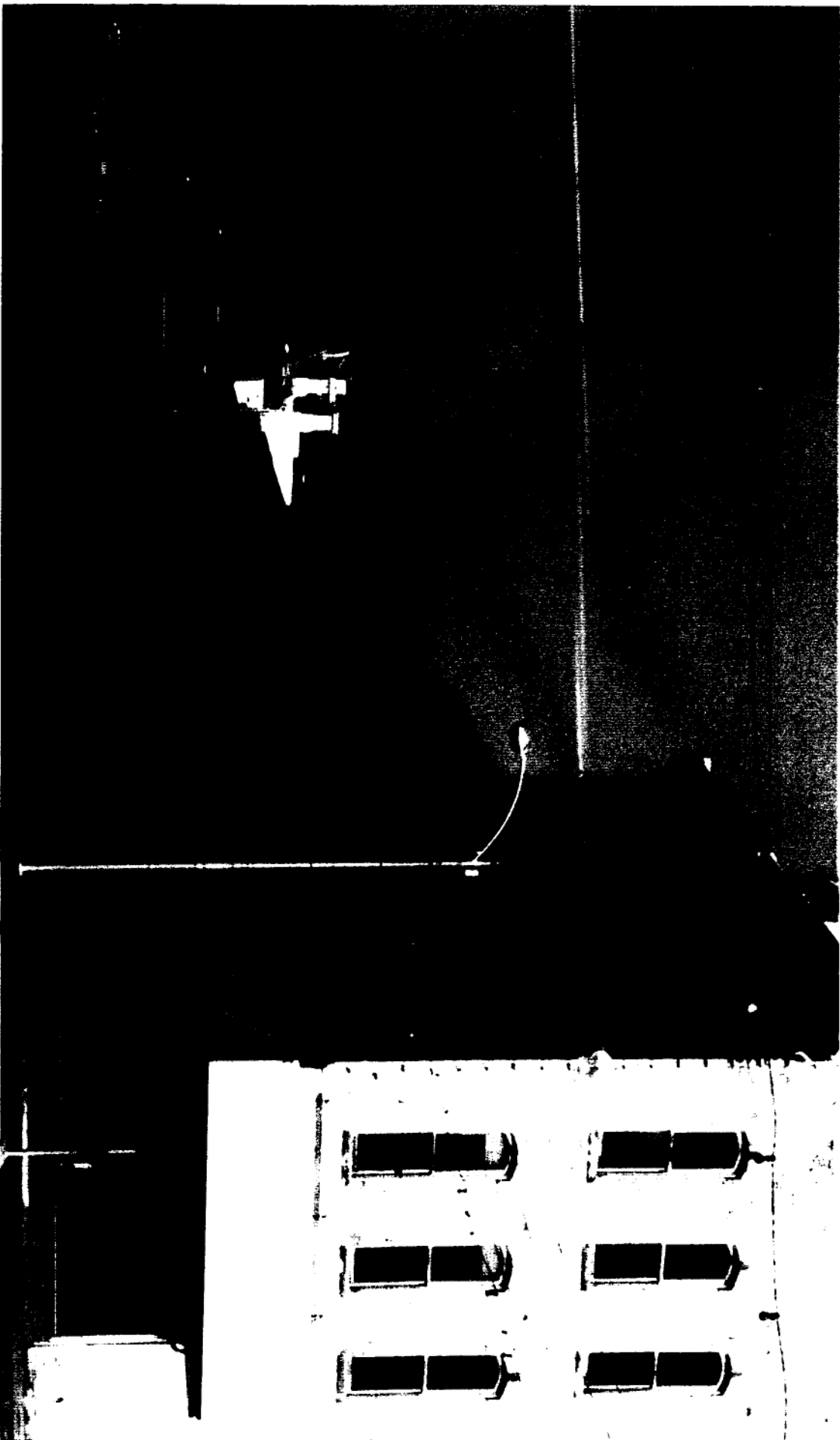
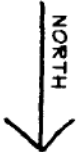


FIGURE 9

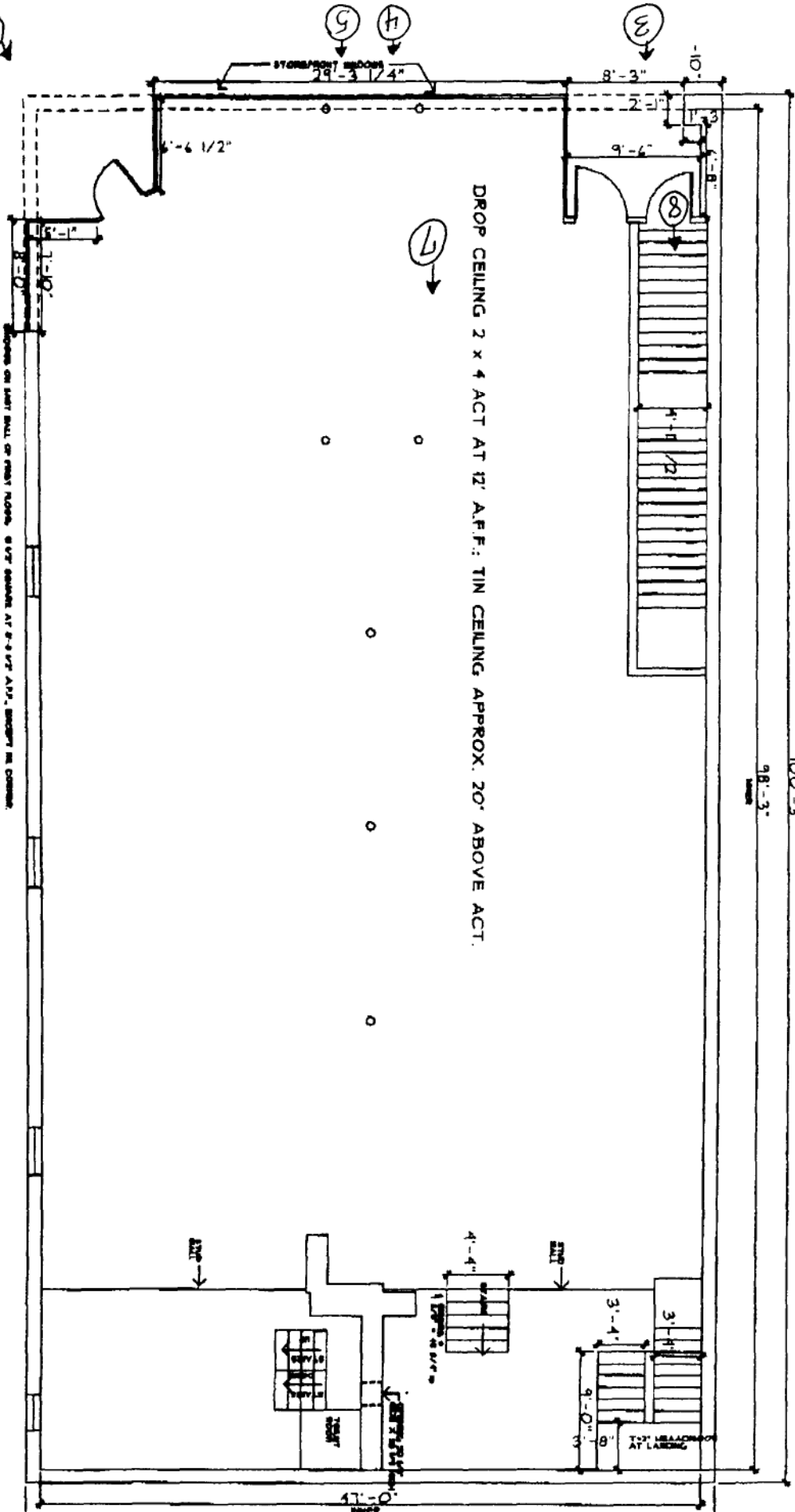
Palace Hotel Floor Plan & Photo Key



(6)

FIRST FLOOR PLAN (GROUND LEVEL) - PALACE HOTEL, BUTLER

SCALE: 1" = 10'



NOTES
ALL DOORS 3'-0" THIS FLOOR
COLUMNS 6 1/2" DIA.

DROP CEILING 2 x 4 ACT AT 12' A.F.F.; TIN CEILING APPROX. 20' ABOVE ACT.

DOORS ON LEFT WALL OF REAR ROOMS. 8' 0" SQUARE AT 8'-0" A.F.F.; 8' 0" SQUARE AT 8'-0" A.F.F.; 8' 0" SQUARE AT 8'-0" A.F.F.

(2)

(1)

(3)

(4)

(5)

(7)

(8)

(9)

FIGURE 10
Palace Hotel Floor Plan & Photo Key

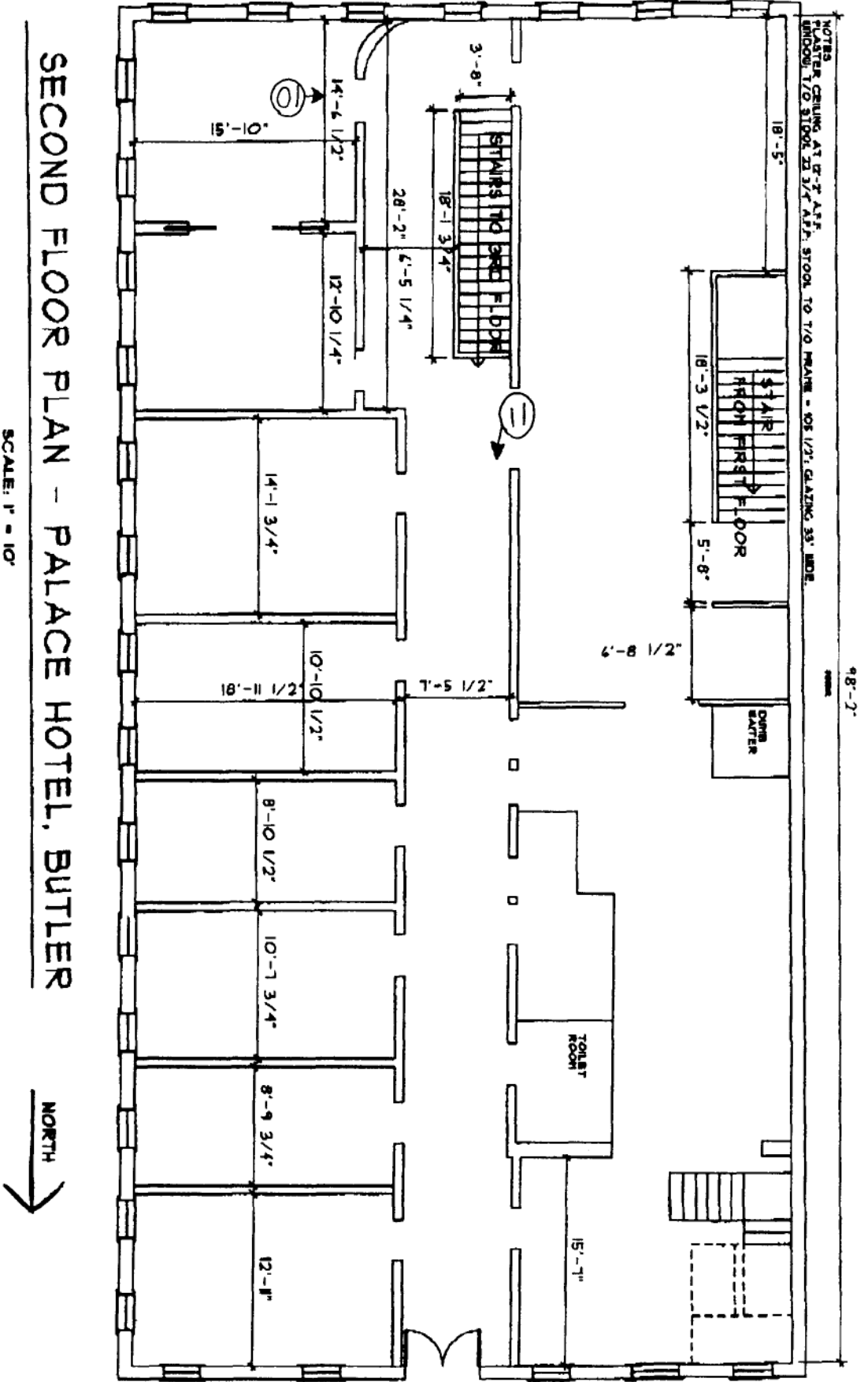
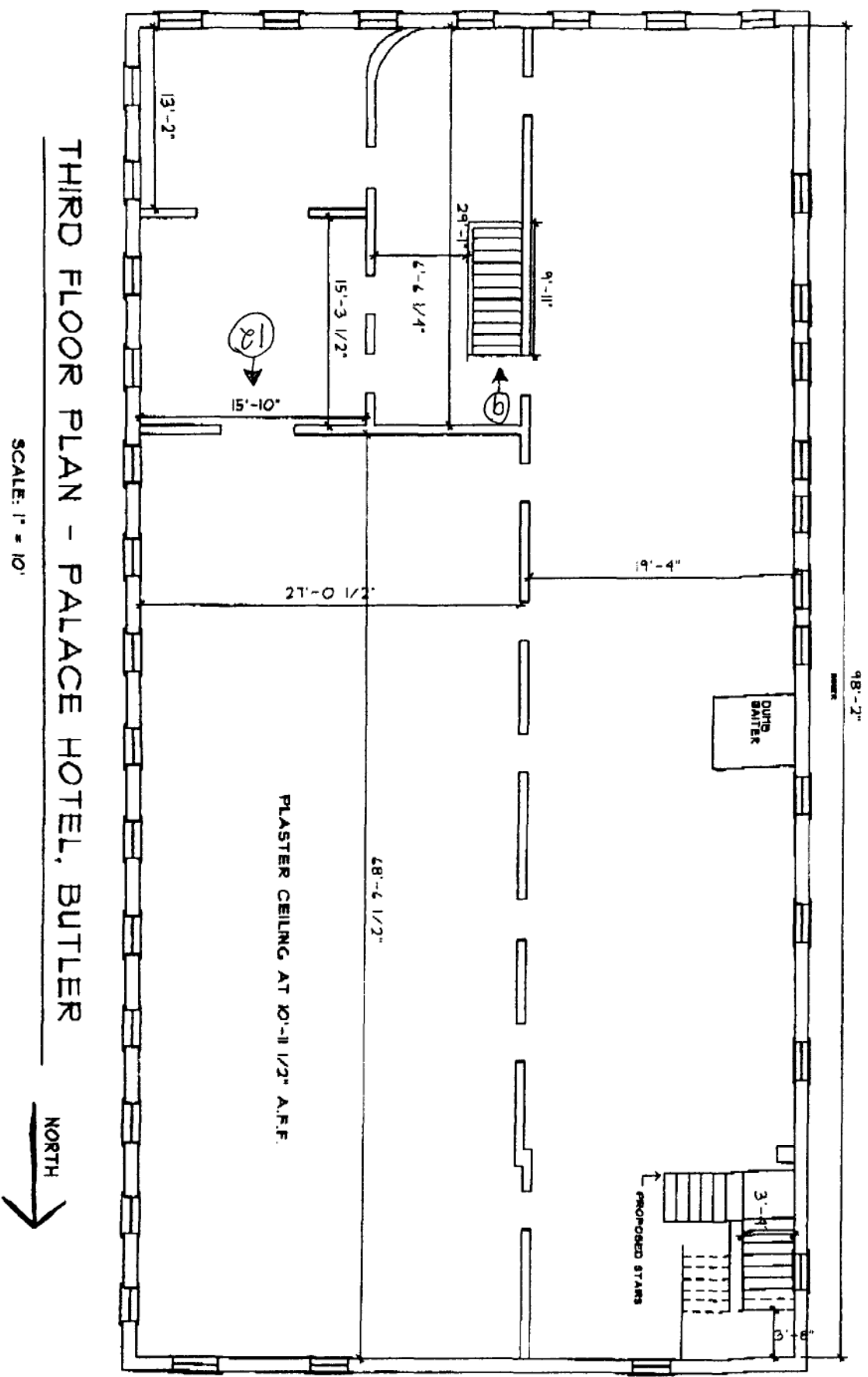
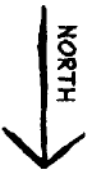


FIGURE 11
 Palace Hotel Floor Plan & Photo Key



THIRD FLOOR PLAN - PALACE HOTEL, BUTLER

SCALE: 1" = 10'



United States Department of the Interior
National Park Service

National Register of Historic Places Continuation Sheet

Section number 8 Page 16

Palace Hotel
Bates County, Missouri

Narrative Statement of Significance

Summary:

The Palace Hotel in Butler, Bates County, Missouri, is locally significant under Criterion A in the area of Commerce and under Criterion C in the area of Architecture. The Palace Hotel, built in 1879 on the northeast corner of Butler's Courthouse Square, represents a fine example of Italianate architecture with the primary façade featuring an elaborate bracketed cornice with rectangular pediment and arched one-over-one windows.

In addition to its significance for its fine architectural qualities, the Palace Hotel, one of three major commercial buildings built on the Butler Square between 1870 and 1890, was also instrumental in the commercial development of the town of Butler. Butler was burned to the ground during the Civil War and the construction of the three-story Palace Hotel helped spark the town's development and establish Butler as an early commercial center. Throughout its history, the first story of the hotel housed various retailers, such as M. S. Cowles clothing store, American Clothing House, and J.C. Penney Co. The second floor first served as a luxury hotel and later as offices for doctors and other businessmen. The third floor featured an elaborate ballroom ideal for social gatherings of the town elite and later became a home for the local Elk's Lodge. As it relates to the Palace Hotel's Italianate architecture, the period of significance is 1879, the construction date of the building. As it relates to the Palace Hotel's influence of Butler's commercial development, the period of significance spans from 1879-1952, the fifty-year closing date for periods of significance. Although the Palace Hotel no longer operated out of the building after ca. 1898, the businesses that occupied the building for the next fifty years continued to contribute to Butler's commercial development.

Elaboration:

The Palace Hotel was built in 1879 near the end of the Italianate period (1840-1890) and remains a fine example of high style Italianate architecture. The Palace Hotel is also locally significant in the area of commerce. It was one of the first buildings constructed on the town square and has housed a variety of different commercial concerns relevant to the city's livelihood. Captain John Westley Hannah, owner and proprietor of the Palace Hotel, moved to the Butler community from Paris, Edgar County, Illinois in 1866 after arriving home from the Civil War. He brought his new young wife, Jennie, and soon began rebuilding the town, which had burned to the ground during the war. Captain Hannah purchased the land on the entire north side of the Butler Square in 1870 for \$2,727 after the buildings on it were destroyed by fire a second time.⁴ He partnered with Smith C. Minitara to construct a building on the northeast corner of what is now called the Butler Courthouse Square.⁵ M.S. Cowles supplied brick manufactured in his own kiln east of town for the building's construction.⁶ E.A. Bennett and C.S. Wheeler operated a hardware and furniture business out of this new facility. With the success of this small business, Captain Hannah wanted to further stimulate the growth of commerce in Butler. He partnered with T. A. Shaw to formulate a plan for building a three-story hotel. As commerce in Butler would continue to expand and attract individuals from near and far, Hannah and Shaw recognized the importance of having a first-class hotel available. According to the Bates County Record, the oldest newspaper in the Butler area, on February 8, 1879, Hannah and Shaw signed a contract

⁴ Howard Simpson, "It was a grand era...", news-Xpress [Butler, MO] 4 Jan. 2002: 8.

⁵ Reva Stubblefield, "J.C. Penney building once a lavish Butler Hotel," Bates Co. [MO] News-Headliner 7 Nov. 1974: 12.

⁶ Stubblefield 12.

United States Department of the Interior
National Park Service

National Register of Historic Places Continuation Sheet

Section number 8 Page 17

**Palace Hotel
Bates County, Missouri**

with Samuel Currier for the manufacture of brick and with Messrs. McBrides and Helms (two of each) for the laying of brick for their three-story hotel.⁷ The following week Hannah and Shaw traveled to Kansas City to consult with an architect about plans for their new hotel.⁸ It was decided that the first floor would remain fairly open for use as a store. The second floor would house the hotel, with many smaller rooms available for tenants and larger kitchen and dining facilities as well. The third floor would feature an elaborate ballroom for dances and gatherings held by the elite of Butler society. The exterior of the building would showcase the Italianate architectural style that was popular during this time period. By May of 1879, Hannah and Shaw were firing brick in their kiln and ready to begin laying brick for the hotel.⁹ The Palace Hotel had its archway finished and was getting its roof put on and windows put in by the end of August 1879.¹⁰ The rapid completion of the Palace Hotel was welcome by many, especially those interested in utilizing the building's first floor for their commercial concerns. On September 6, 1879, M. S. Cowles & Co. began running an advertisement in the Bates County Record thanking its patrons for their business and announcing a move to the two rooms on the first floor of the Palace Hotel upon its completion.¹¹ M.S. Cowles & Co. attracted customers from as far away as twelve miles past Nevada, Missouri, a great distance at this time, and business at their current location was too cramped. The Palace Hotel provided a perfect solution to the overcrowding. Brothers Joseph and James McKibben of M.S. Cowles & Co. would be managers for the newly relocated company that provided clothing and goods for gentlemen.¹² The Palace Hotel neared completion as the iron balcony for the Palace Hotel arrived from Ft. Scott in late September 1879, and the McKibben brothers were in their new store by the first week of October.¹³ Alex Lamb was contracted to paint all of the Palace Hotel's woodwork the following week, and by mid-December it was announced that the hotel would be ready for occupancy in January 1880.¹⁴ The Q. A. M. Club gave both a Christmas party and New Year's Eve dance at the Palace Hotel, and on January 10, 1880, the Bates County Record announced that carpets were being put down and furniture and dishes were being ordered in preparation for a reception of guests the first of February.¹⁵ According to the newspaper, Col. E. H. Brown of L & S Railway was the first regular guest of the Palace Hotel at the end of January 1880.¹⁶ In mid-February, Hannah and Shaw leased the Palace Hotel to John S. Ketter, a highly recommended landlord, of Lafayette, Indiana.¹⁷ Harry Newman of the wholesale clothing house of Meyer, Strauss & Goodman of Chicago became the first commercial tourist to stay at the Palace Hotel when he visited in late February 1880 and sold merchandise to M. S. Cowles & Co.¹⁸ Upon its completion the Palace Hotel immediately demonstrated its significance both visually as one of finest buildings in the entire area and a stunning representative of Italianate architecture as well as to the commercial development of Butler.

⁷ "Local News," The Bates County Record 8 Feb. 1879: N. pag.

⁸ "Local News," The Bates County Record 15 Feb. 1879: N. pag.

⁹ "Local News," The Bates County Record 10 May 1879: N. pag.

¹⁰ "Local News," The Bates County Record 30 Aug. 1879: N. pag.

¹¹ "Local News," The Bates County Record 6 Sept. 1879: N. pag.

¹² M.S. Cowles & Co, Advertisement, Bates County Record 6 Sept. 1879: N. pag.

¹³ "Local News," The Bates County Record 20 Sept. 1879: N. pag. and "Local News," The Bates County Record 4 Oct. 1879: N. pag.

¹⁴ "Local News," The Bates County Record 11 Oct. 1879: N. pag. and "Local News," The Bates County Record 13 Dec. 1879: N. pag.

¹⁵ "Local News," The Bates County Record 27 Dec. 1879: N. pag. and "Local News," The Bates County Record 3 Jan. 1880: N. pag. and "Local News," The Bates County Record 10 Jan. 1880: N. pag.

¹⁶ "Local News," The Bates County Record 24 Jan. 1880: N. pag.

¹⁷ "Local News," The Bates County Record 14 Feb. 1880: N. pag.

¹⁸ "Local News," The Bates County Record 21 Feb. 1880: N. pag.

United States Department of the Interior
National Park Service

National Register of Historic Places Continuation Sheet

Section number 8 Page 18

**Palace Hotel
Bates County, Missouri**

Italianate architecture was a common style in the United States between 1850 and 1880. In particular, it was popular in the Midwest, specifically in small expanding towns, such as Butler, Missouri. Other areas that saw an Italianate influence were growing cities of the northeastern seaboard and America's principal port at the time, San Francisco.¹⁹ Italianate architecture was never as popular in the southern states because the style was no longer popular once rebuilding began again after the Civil War, Reconstruction and 1870s depression.²⁰ Italianate architecture originated in England as a more informal reaction to the two hundred year old fashion of formal classical architecture.²¹

The Butler Square features many different architectural styles, such as Gothic Revival, which immediately preceded Italianate style and Queen Anne, which immediately followed it. The Palace Hotel is a significant example of the less common, but more formal Renaissance Revival townhouse style of Italianate architecture that includes relatively little detail except for window crowns and cornice moldings.²² This formal style was well suited to the sophistication of the hotel's clientele and the exclusive ballroom dances that took place on its third floor for members of Butler society. There are four main areas of elaboration in Italianate architecture: windows, cornices, porches, and doorways.²³ The Palace Hotel maintains details relevant to three of these categories. Italianate windows, often paired or in triples, are usually one- or two-pane glazing with arched or curved tops.²⁴ The window enframements can either be hooded, bracketed and/or pedimented, or framed.²⁵ The Palace Hotel's windows are double-hung, segmentally-arched and narrow with a characteristic elaborated window crown in an inverted-U shape. Evenly spaced on the façade and east elevation, the single windows have stone sills and keystones. Italianate cornices, often on deep trim bands elaborated with panels or moldings, feature large eave brackets in a variety of shapes and spacing.²⁶ The façade of the Palace Hotel features an elaborate bracketed cornice that conceals the structure's flat roof. Resting on top of the cornice is a rectangular pediment. Italianate porches and porch-support columns do not have much decoration and are usually only one story high. Porches can be small-entry or full-width with the most common porch support being a square post with beveled corners.²⁷ The Palace Hotel does not have a porch, although it did at one time have a second floor balcony supported by narrow square posts. There are individual two-story protruding brick columns that flank the center window of the second and third stories on the façade and also decorate its corners. Finally, Italianate doorways feature single or double doors that are similar to the windows in shape, including rectangular, arched or segmentally arched. Italianate style was the first to popularize a large-pane glazing in the door rather than smaller panes surrounding the door.²⁸ The Palace Hotel's doorway features an oval-shaped glass pane set within a rectangular wood frame with decorative detailing at each of the four corners. No other windows are located within or around the doorway. Each of these characteristics is an identifying feature of Italianate architecture, and the lack of additional detail suggests its correlation to the less common, formal Renaissance Revival style. Throughout the years few changes to the building's exterior have enabled it to remain a fine example of Italianate architecture. Furthermore, restoration plans are underway to

¹⁹ Virginia McAlester and Lee McAlester, A Field Guide to American Houses (New York: Alfred A. Knopf, Inc., 2000) 212.

²⁰ McAlester 212.

²¹ McAlester 212.

²² McAlester 214.

²³ McAlester 212.

²⁴ McAlester 212.

²⁵ McAlester 213.

²⁶ McAlester 212.

²⁷ McAlester 212.

²⁸ McAlester 212.

United States Department of the Interior
National Park Service

National Register of Historic Places Continuation Sheet

Section number 8 Page 19

**Palace Hotel
Bates County, Missouri**

enhance the building's remaining features and restore both the exterior and the interior to near its original condition.

The Palace Hotel served a variety purposes and clientele by providing first-class lodging for Butler citizens and individuals visiting the town, by hosting elaborate and long-remembered social gatherings, and by housing various commercial concerns that supported Butler's economic development. According to the Bates County Record, Butler received a telegraph line in September of 1880 and the office was located in the Palace Hotel.²⁹

At that same time, the railroad reached Butler via the L & S Railway, which brought the first passenger to town on September 20, 1880.³⁰ The Palace Hotel provided bus service to and from the railroad.³¹

Commercial use of the first floor changed hands in 1883 when M.S. Cowles & Co. retired and the American Clothing House replaced it, with response to this new store as positive as to the one it replaced. Other smaller businesses utilized space within the hotel as well. These included A'Ron Hart's One Price Store in 1883, which was located in the hotel briefly before American Clothing House and Woolery & Rich, which was located in the hotel for a short time beginning in 1884.³² The Palace Hotel also provided space for other purposes, such as in 1895 when Dr. Rea visited the town from Kansas City, Missouri every four weeks. He had a branch office located within the hotel for those patients he served while in town. Later, in 1935, Dr. D.A. Delameter ran his office out of the second floor when Howard Simpson, an elderly gentleman well-known for his recollections of the changes to Butler Square, recalls visiting him to have his tonsils removed.³³ The American Clothing House, known as "one of the pioneer mercantile establishments of this section of the state," remained in the Palace Hotel even after the hotel became the Ross Hotel ca. 1898.³⁴ According to Sanborn Fire Insurance Maps, the building only functioned as a hotel for another ten years. In November of 1906 the Ross Hotel was sold to H. G. Cook, who leased the third floor to the Elk's Lodge beginning in January of 1907.³⁵

Plans for remodeling the third floor, which had previously featured a large ballroom on one side and kitchen and dining room on the other side, included a lodge room, two parlors, a reception hall, a billiard and card room, a cloak room, a kitchen, and a stock room. It would be lighted by electricity and heated by steam.³⁶

Figure 1 shows a historic photo of spectators out on the second floor balcony to watch an I.O.O.F. parade in 1906. During this time the American Clothing House remained a strong retailer on the building's first floor. In 1926, another retailer, by the name of J.B. Byars Co., arrived in Butler replacing the American Clothing House and opening for business in the former Palace Hotel. J.B. Byars Co., later known as J.C. Penney Co., quickly became and still remains a retailing giant throughout the country. Its success in the former Palace Hotel building through 1987 further supported the continued development of commerce in this small town. The entire building currently is in the process of renovation and restoration by Prost Builders, Inc. Meanwhile, Bent Bar gym and Video Plaza still occupy the first floor. The Palace Hotel played an instrumental role in the commercial development of Butler, and it remains a fine example of the Italianate architecture popular at the time of its construction. It is important to recognize the local significance of the Palace Hotel as a fine representation of Italianate architecture as well as a significant influence to Butler's growth as a small town.

²⁹ "Local News," The Bates County Record 18 Sept. 1880: N. pag.

³⁰ "Local News," The Bates County Record 25 Sept. 1880: N. pag.

³¹ Palace Hotel, Advertisement, Bates County Record 6 Jan. 1883: N. pag.

³² "Local News," The Bates County Record 14 July 1883: N. pag. and "Local News," The Bates County Record 5 Apr. 1884: N. pag.

³³ Simpson 8.

³⁴ "American Clothing House Sold," Butler Weekly Times 18 Feb. 1926: N. pag.

³⁵ "Local News," The Bates County Record 17 Nov. 1906: N. pag. and "Local News," The Bates County Record 19 Jan. 1907: N. pag.

³⁶ "Local News," The Bates County Record 19 Jan. 1907: N. pag.

United States Department of the Interior
National Park Service

National Register of Historic Places Continuation Sheet

Section number 9 Page 20

**Palace Hotel
Bates County, Missouri**

Sources

American Clothing House. Advertisement. Butler Weekly Times 11 Feb. 1926: N. pag.

"American Clothing House Sold." Butler Weekly Times 18 Feb. 1926: N. pag.

Atkeson, W.O. History of Bates County, Missouri. Vol. 1. Topeka, KS: Historical Publishing Company, 1918.

Commemorative Book Committee. Bates County, MO Sesquicentennial: 1841-1991. Butler, MO: [Bates County Historical Society], 1991.

Dr. Rea. Advertisement. Bates County Record 28 May 1895: N. pag.

"Local Items." Bates County Record 8 Feb. 1879: N. pag.

"Local Items." Bates County Record 15 Feb. 1879: N. pag.

"Local Items." Bates County Record 10 May 1879: N. pag.

"Local Items." Bates County Record 30 Aug. 1879: N. pag.

"Local Items." Bates County Record 6 Sept. 1879: N. pag.

"Local Items." Bates County Record 20 Sept. 1879: N. pag.

"Local Items." Bates County Record 4 Oct. 1879: N. pag.

"Local Items." Bates County Record 11 Oct. 1879: N. pag.

"Local Items." Bates County Record 13 Dec. 1879: N. pag.

"Local Items." Bates County Record 27 Dec. 1879: N. pag.

"Local Items." Bates County Record 3 Jan. 1880: N. pag.

"Local Items." Bates County Record 10 Jan. 1880: N. pag.

"Local Items." Bates County Record 24 Jan. 1880: N. pag.

"Local Items." Bates County Record 7 Feb. 1880: N. pag.

"Local Items." Bates County Record 14 Feb. 1880: N. pag.

"Local Items." Bates County Record 21 Feb. 1880: N. pag.

United States Department of the Interior
National Park Service

National Register of Historic Places Continuation Sheet

Section number 9 Page 21

**Palace Hotel
Bates County, Missouri**

"Local Items." Bates County Record 18 Sept. 1880: N. pag.

"Local Items." Bates County Record 25 Sept. 1880: N. pag.

"Local Items." Bates County Record 14 July 1883: N. pag.

"Local Items." Bates County Record 5 Apr. 1884: N. pag.

"Local Items." Bates County Record 12 June 1897: N. pag.

"Local Items." Bates County Record 10 July 1897: N. pag.

"Local Items." Bates County Record 14 Aug. 1897: N. pag.

"Local Items." Bates County Record 17 Nov. 1906: N. pag.

"Local Items." Bates County Record 19 Jan. 1907: N. pag.

McAlester, Virginia and Lee McAlester. A Field Guide to American Houses. New York: Alfred A. Knopf, Inc., 2000.

Moore, C.A. "Bright future for Butler landmark: Renovation of original hotel building creating excitement." news-Xpress [Butler, MO]. 4 Jan. 2002: 1.

M.S. Cowles & Co. Advertisement. Bates County Record 6 Sept. 1879: N. pag.

M.S. Cowles & Co. Advertisement. Bates County Record 11 June 1881: N. pag.

Palace Hotel. Advertisement. Bates County Record 6 Jan. 1883: N. pag.

"Planners see Palace Hotel project as spark for square." news-Xpress [Butler, MO]. 11 Jan. 2002: 1.

Simpson, Howard. "It was a grand era..." news-Xpress [Butler, MO]. 4 Jan. 2002: 8.

Stubblefield, Reva. "J.C. Penney building once a lavish Butler hotel." Bates Co. [MO] News-Headliner. 7 Nov. 1974: 12.

United States Department of the Interior
National Park Service

National Register of Historic Places Continuation Sheet

Section number 10, Photos Page 22

**Palace Hotel
Bates County, Missouri**

Verbal Boundary Description

The East Two-Thirds of Lot 1, in Block 2, in the Town, now City of Butler, Missouri.

Boundary Justification

This is the legal described boundary for the entire parcel historically associated with the location of the hotel, as described in a March 15, 1994 Warranty Deed.

Photographs

The following information is the same for all photographs:

Palace Hotel

Bates County, Missouri

Julie C. Doering

Photos #1, #3-#5, #7-#12 – March 2002; Photos #2 and #6 - January 2002

Negatives on file with Julie C. Doering, Institute for Sustainable Development, 112 East High Street,
Jefferson City, MO

Photo Descriptions:

1. Facing northeast, view of west elevation and façade of Palace Hotel at the east end of a row of attached commercial buildings
2. Facing northwest, view of façade and east elevation, first floor corner storefront entrance at east end of façade and second floor hotel entrance at west end of façade
3. Facing north, view of main entrance to second floor
4. Facing north, view of Italianate features, such as arched one-over-one double hung windows with inverted U-shaped window crown, single protruding columns, elaborated bracketed cornice with rectangular pediment
5. Facing north, view of Italianate features, such as arched one-over-one double hung windows with inverted U-shaped window crown, single protruding columns, elaborated bracketed cornice with rectangular pediment
6. Facing southwest, view of east and north elevations
7. Facing north, view of interior first floor currently a video plaza and gym

United States Department of the Interior
National Park Service

National Register of Historic Places Continuation Sheet

Section number _____ Photos _____ Page 23

**Palace Hotel
Bates County, Missouri**

8. Facing north, view of ceiling of main entrance stairway to second floor
9. Facing south, view from third floor down the interior stairway connecting to the second floor
10. Facing west, view of second floor rounded hallway at south end of the building that runs the length of the floor
11. Facing north, view of hallway and doorways to hotel rooms on the second floor
12. Facing north, view of third floor ballroom through doorway of smaller room at the south end of the building

United States Department of the Interior
National Park Service

National Register of Historic Places Continuation Sheet

Section number Additional Documentation Page 24

Palace Hotel
Bates County, Missouri

Documentation of the Palace Hotel Construction: 1879.

Sources:

Messrs. Hannah & Shaw have contracted with Mr. Samuel Carter, owner of a brick yard, to haul bricks into the brick kiln. Their three-story building will be built by Messrs. M. B. Bates and W. M. Carter, (being Mr. Carter's) to City Union. They are all first-class mechanics having built some of the finest residences and business houses in Clinton. They will remove to our town with their families—Mr. Carter, intending to commence operations by the first of March. Skilled mechanics and their families, in the kind of im-

Capt. Hannah and T. A. Shaw, visited Kansas City this week to consult an architect in regard to the plans and specifications of their new hotel building.

1. "Local Items." Bates County Record
8 Feb. 1879: N. pag.

2. "Local Items." Bates County Record
15 Feb. 1879: N. pag.

Hannah & Shaw fired their kiln of brick on Wednesday evening. They expect to commence laying brick on their hotel in about ten days. They have opened a fine stone quarry and are busily engaged getting out rock for water table and window sills. Six brick masons will be employed in the work and everything now looks as if things were going to boom.

The roof is being put on the Palace hotel, the arch way between the lower rooms is finished and the windows are being put in. In short, the Palace will be completed at the earliest possible day.

3. "Local Items." Bates County Record
10 May 1879: N. pag.

4. "Local Items." Bates County Record
30 Aug. 1879: N. pag.

United States Department of the Interior
National Park Service

National Register of Historic Places Continuation Sheet

Section number Additional Documentation Page 25

Palace Hotel
Bates County, Missouri

Documentation of the Palace Hotel Construction: 1879. (continued)

Sources:

M. S. Cowles & Co. are out today with a new ad., congratulating the people upon the future outlook. As will be seen, they have leased the rooms in the Palace hotel building and will occupy them as soon as finished. Joe. McKibben will fill the corner room with clothing and gents' furnishing goods, and "Jimmie" will fill the west room "chuck full" of boots and shoes.

6. M.S. Cowles & Co.
Advertisement.
Bates County Record
6 Sept. 1879: N. pag.

5. "Local Items." Bates County Record
6 Sept. 1879: N. pag.

The iron balcony for the Palace hotel arrived from Ft. Scott Tuesday evening. It will not be put in place until the sidewalk is built.

7. "Local Items." Bates County Record
20 Sept. 1879: N. pag.

Joe. McKibben can now be found in his new room, in the corner of the Palace Hotel building. Joe. says he will now be able to handle his former stock of clothing with pleasure to himself and satisfaction to his customers.

8. "Local Items." Bates County Record
4 Oct. 1879: N. pag.

TO OUR FRIENDS AND PATRONS

At the close of another business year with us, we take occasion to thank you for your liberal patronage, and to rejoice with you in the bright future that is so near at hand. Already the busy hum of industry is heard and felt on every hand, from the Atlantic to the Pacific. Furnaces and factories are running at their fullest extent, our textile goods are being exported largely to foreign countries. A contract for a steel rail cannot be made to be delivered before December next. Every steamer from England brings to our country millions of gold in payment for our grains and meats. Agricultural implements, wagons, hardware, etc., are being exported and in fact our nation is springing on the high road to prosperity, and we, here in glorious old Bates, are feeling its impetus.

In view of these facts, we are making preparations to take care of our trade, not being able to do so in the rooms we now occupy, being too much crowded to facilitate our increasing business, we have rented the two rooms under Harrah and Shaw's new hotel, and as soon as they can be completed, will remove our clothing and gents' furnishing goods to the corner room, and our boots and shoes to the west room. Joseph and James McKibben will have charge of these magnificent rooms, filled with the largest stock of goods ever before exhibited in Bates or adjacent counties, and they will welcome all their old friends and as many new ones as may see fit to call. This change will give us ample room to properly handle a large stock of staple and fancy dry goods, notions, millinery, carpets, etc., etc., and we cordially invite all to visit us in both houses and various departments. Very Respectfully,

M. S. Cowles & Co.

United States Department of the Interior
National Park Service

National Register of Historic Places Continuation Sheet

Section number Additional Documentation Page 26

**Palace Hotel
Bates County, Missouri**

Documentation of the Palace Hotel Construction: 1879. (continued)

Sources:

Alex. Lamb has taken the contract to paint all the woodwork in the Palace hotel. He will do a good job.

The Palace hotel is rapidly approaching completion. The second story is now being painted and the carpenters are at work in the third story. Alex. Lamb is doing the painting, which not only insures a good job. The Palace will be ready for occupancy by the first of August.

9. "Local Items." Bates County Record
11 Oct. 1879: N. pag.

10. "Local Items." Bates County Record
13 Dec. 1879: N. pag.

The Q. A. M. club gave a very pleasant party at the Palace hotel Christmas night.

The Q. A. M. club gave a dance at the Palace hotel on New Years night. It was well attended and everything passed off pleasantly.

11. "Local Items." Bates County Record
27 Dec. 1879: N. pag.

12. "Local Items." Bates County Record
3 Jan. 1880: N. pag.

The Palace hotel will be opened for the reception of guests about the first of next month. Carpets are being put down, furniture and dishes will be ordered next week.

Col. Brown is the first regular guest of the Palace Hotel. He has a suite of rooms and takes his meals with M. S. Cowles, Esq.

13. "Local Items." Bates County Record
10 Jan. 1880: N. pag.

14. "Local Items." Bates County Record
24 Jan. 1880: N. pag.

United States Department of the Interior
National Park Service

National Register of Historic Places Continuation Sheet

Section number Additional Documentation Page 27

Palace Hotel
Bates County, Missouri

Documentation of the Palace Hotel Construction: 1879. (continued)

Sources:

The Palace hotel will be formally opened about the 15th inst.

Messrs. Hannah & Shaw have leased the Palace hotel to Mr. John S. Keiser, of Lafayette, Indiana. Mr. Keiser is an old landlord, and comes among us highly recommended both as a business man and gentleman. He will take charge of the Palace next Monday and have a formal opening as soon thereafter as possible.

15. "Local Items." Bates County Record
7 Feb. 1880: N. pag.

16. "Local Items." Bates County Record
14 Feb. 1880: N. pag.

The first commercial tourist to unpack his supplies at the Palace hotel was Harry Newman, of the wholesale clothing house of Meyer, Strauss & Goodman, Chicago. This was Mr. Newman's first trip and as he told quite a bit to M. S. Cowles & Co., he expects to visit our city regularly. He represents one of the largest houses in the West and carries a line of samples which for excellence and beauty are seldom equalled.

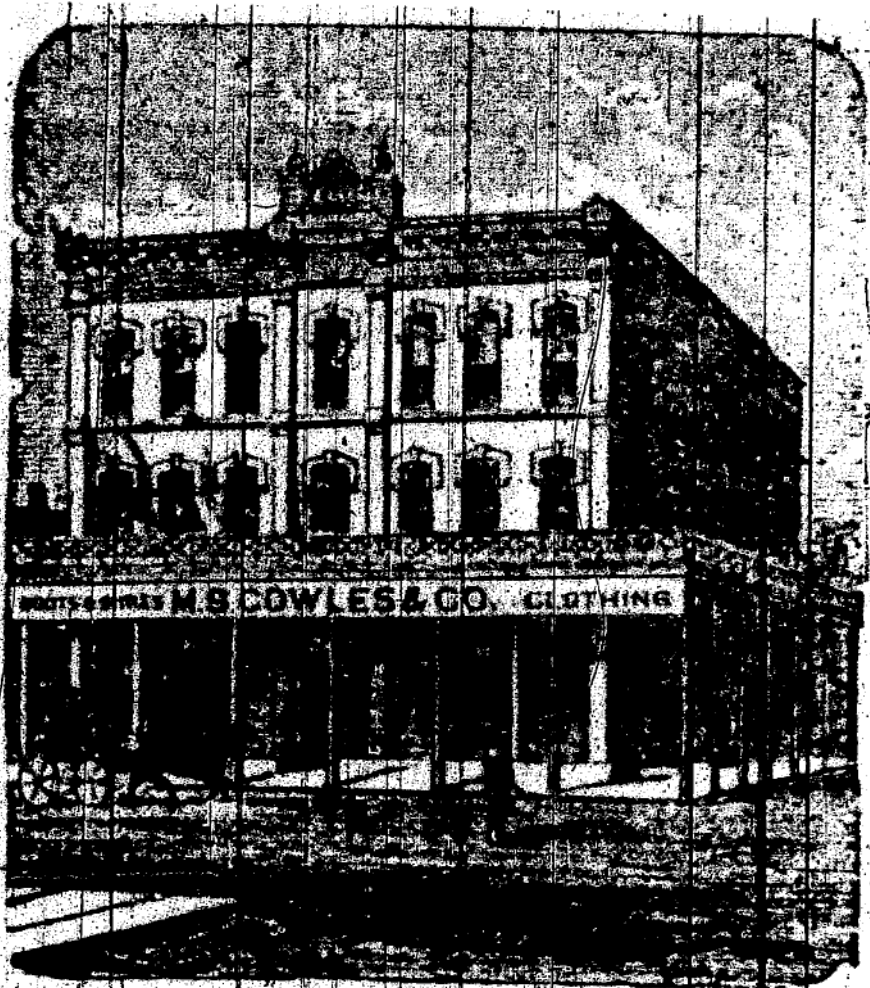
17. "Local Items." Bates County Record
21 Feb. 1880: N. pag.

United States Department of the Interior
National Park Service

National Register of Historic Places Continuation Sheet

Section number Additional Documentation Page 28

**Palace Hotel
Bates County, Missouri**



M.S. COWLES & CO.

Will be found in the Large
and Spacious Rooms

Under Palace Hotel,

Sources:

1. M.S. Cowles and Co.
Advertisement. Bates County Record 11 June 1881: N. pag.
2. Palace Hotel. Advertisement.
Bates County Record 6 Jan. 1883: N. pag.

PALACE HOTEL
 Cor. Main and Ohio Streets. BUTLER, MO.
J. W. Hannah, Propr.
 The Palace is the largest and most elegantly furnished Hotel in this section of the State, with
**LARGE AND WELL LIGHTED
 SAMPLE ROOMS.**
 Table always supplied with everything in market.
'BUSSES RUN
 to all trains and to and from hotel

United States Department of the Interior
National Park Service

National Register of Historic Places Continuation Sheet

Section number Additional Documentation Page 29

Palace Hotel
Bates County, Missouri

Source:

Dr. Rea. Advertisement. Bates County Record 28 May 1895: N. pag.

His Rooms Crowded,
Everybody Satisfied and Many
Praising Him.
DR. REA.



Specialists in the treatment of
Nervous, Chronic, Eye, Ear,
Nose and Throat Diseases
will be at his Branch.
Office at the
PALACE HOTEL, Butler, Mo.,
Tuesday, May 28th.

Returning Every Four Weeks.
Consultation, Examination and an opera-
tion in every case given FREE.

Dr. Rea is a graduate of one of the leading
Medical Colleges of the South. He has
made a special study of the eye, ear, nose,
throat and chronic diseases in the great
Charity Hospitals New York City,
and has had several years' experience in
special practice. His success has been ex-
ceedingly good, and numerous are the
cures. He treats

Acute and Chronic Catarrh,
Noises in ear, Catarrhal deafness, chronic
diseases of the eye, ear, throat, stomach,
liver, kidneys, bladder and urinary or-
gans, hemorrhoids (piles), treated without
the knife. No pain and no detention.

Young and Middle Aged Men.
Suffering from Spermatorrhea and Impot-
ency, as the result of self-abuse in youth or
excesses in manhood, and other causes
producing some of the following effects,
such as emulsions, blotches, debility, ner-
vousness, dizziness, confusion of ideas, av-
ersion in society, defective memory and sex-
ual exhaustion which unfits the victim for
business or marriage, should call and see
Dr. Rea and get his opinion.

Deafness.
There are many cases that have
been improperly treated or neglected that
can be easily restored. Deformities, Club
Feet, Curvature of Spine, etc., properly
treated. Cross Eye straightened within five
minutes without pain. Dr. Rea devotes
special interest to the treatment of Cancers,
Tumors, Scabs, Blotches, Warts, Moles,
Birthmarks and all Blood and Skin Dis-
eases, Varicella, Hydrocele, Open Sores,
Fetor in the Mouth and all Glandular en-
largements cured. He undertakes no incur-
able diseases, but cures thousands given
up for lost. Remember his date and come
early as his rooms are always crowded.

Consultation Private and Free.
Dr. Rea & Co. Kansas City, Mo.

United States Department of the Interior
National Park Service

National Register of Historic Places Continuation Sheet

Section number _____ Additional Documentation _____ Page 30

Palace Hotel
Bates County, Missouri

Documentation of the Palace Hotel Renovations: 1897.

Sources:

The Palace Hotel is at present all torn up. The plumbers, painters and paper hangers have full possession and in a reasonable length of time will turn over the house as good or better than when new. The office is to be located on the second floor (which we think is a mistake), and every room in the house is to be thoroughly overhauled. When completed the palace will have no superior in this section of the state. Chas. Ross is superintending the repairs.

The Palace Hotel is being painted outside, in addition to the many changes and improvements within.

1. "Local Items." Bates County Record
12 June 1897: N. pag.

2. "Local Items." Bates County Record
10 July 1897: N. pag.

The American Clothing House occupies the room formerly used as the office of the Palace, while the corner room is being overhauled and rebuilt, all except the walls. When it returns to its old quarters it expects to occupy the finest store room in town.

3. "Local Items." Bates County Record
14 Aug. 1897: N. pag.

United States Department of the Interior
National Park Service

National Register of Historic Places Continuation Sheet

Section number Additional Documentation Page 31

Palace Hotel
Bates County, Missouri

Appreciation!

FOR twenty-three years or more
it has been my pleasure to live
among you and serve you to the
best of my ability.

During all those years, many
friendships have been formed that
shall never be forgotten, and that
are valued by me as only friend-
ships can be.

It has always been the aim of the
American Clothing House to sell
the highest quality merchandise
in keeping with fair prices, allow-
ing at all times only a fair margin
of profit, and if this has met with
your approval I shall feel more
than repaid and again wish to
express

APPRECIATION!

H. G. COOK, Owner

American Clothing House

Butler, Missouri

Sources:

1. American Clothing House. Advertisement.
Butler Weekly Times 11 Feb. 1926: N. pag.
2. "American Clothing House Sold." Butler Weekly Times 18 Feb. 1926: N. pag.

AMERICAN CLOTHING HOUSE SOLD

J. B. Byars Co., of Denver, Owner of
Large Chain of Stores, the
Purchaser

The American Clothing House, one of the pioneer mercantile establishments of this section of the state, changed hands this week. H. G. Cook, the proprietor, selling the business to the J. B. Byars Company of Denver, Colorado, who took possession Wednesday.

The J. B. Byars Company which owns and operates a chain of fifty-seven mercantile establishments throughout the west and middle west, is a strong concern and its policy, we are informed, is to increase its holdings.

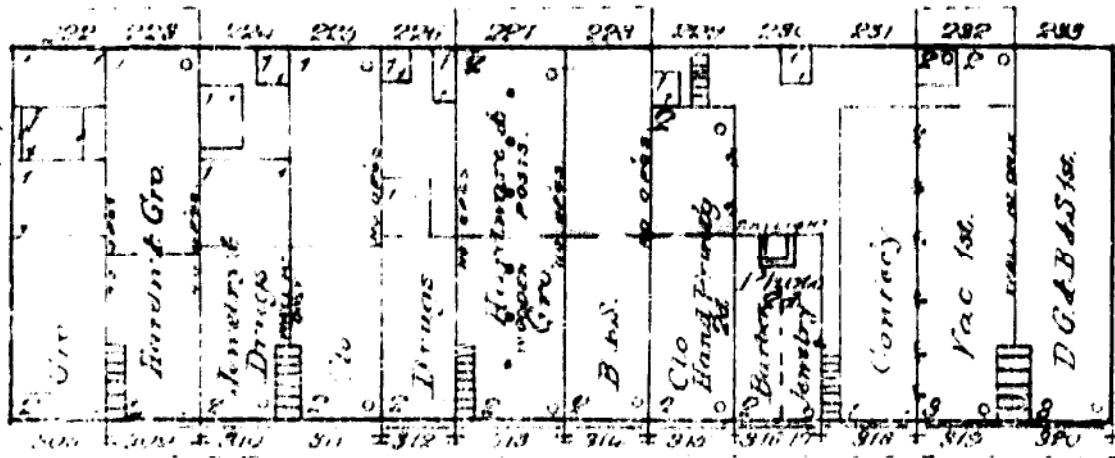
F. L. Coffin, who will manage the business here, is a most courteous gentleman of pleasing appearance, and gives the impression of being an excellent business man. For the past ten years he has been in charge of the Byars store at Fowler, Colo. He is married.

Mr. Coffin informed a representative of The Times Wednesday that the store will remain closed for several days in order that the interior may be remodeled and re-arranged, opening for business on or before March 1.

A full line of gentlemen's furnishing goods, shoes, dry goods, ladies ready-to-wear and millinery will be carried.

The American Clothing House, which for nearly half a century has been one of the leading stores in the county, was established by E. S. Carrithers, who sold out to H. G. Cook in September, 1901, Mr. Cook retaining ownership since that time. Mr. Cook retired from the active management of the business about two years ago, Walter L. WeMott conducting the business since that time.

CHESTNUT

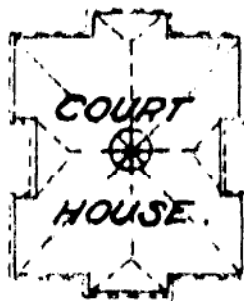


MAIN

OHIO

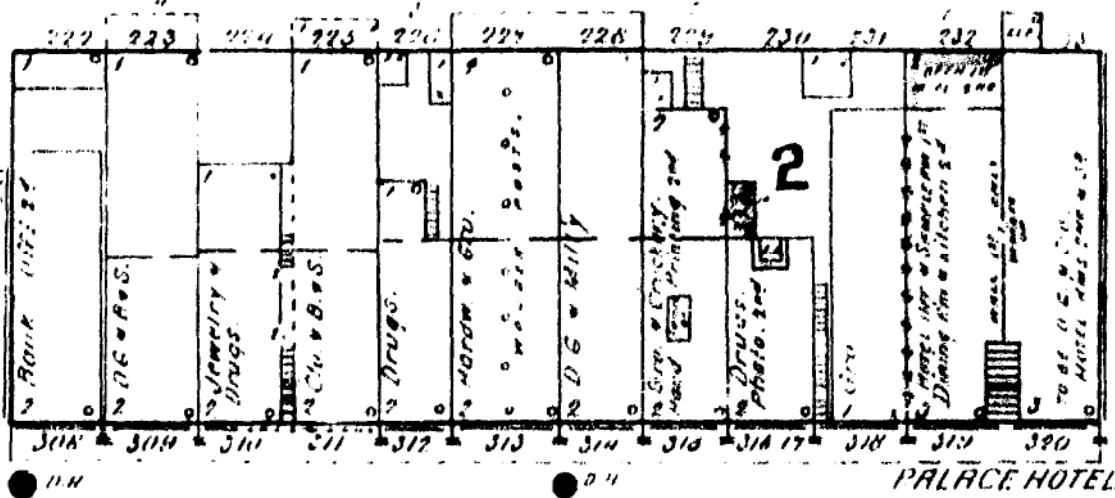
DELAWARE

PUBLIC



SQUARE

CHESTNUT

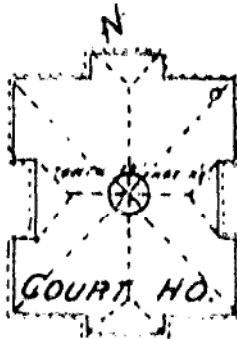


MAIN

OHIO

DELAWARE

PUBLIC



SQUARE

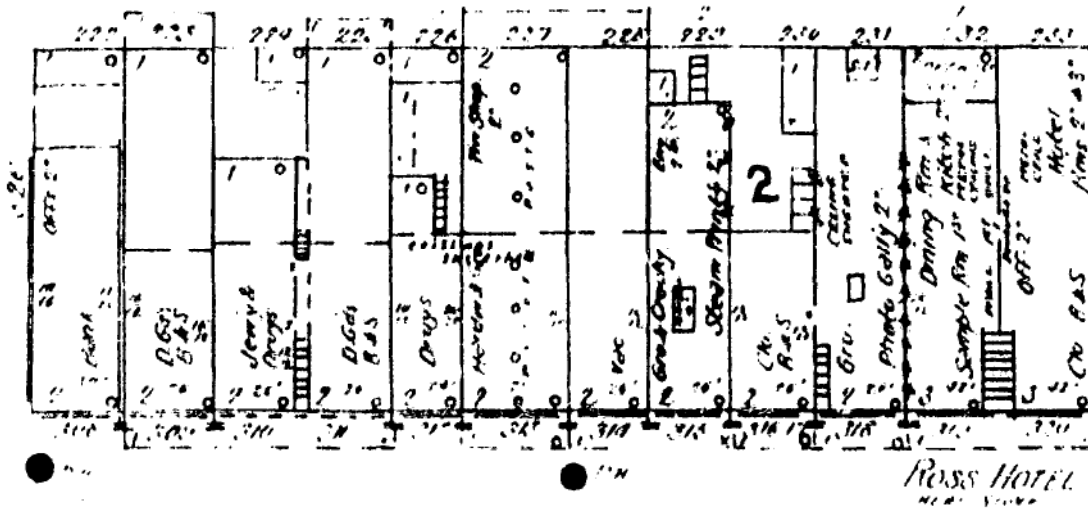
G

12

12

SANBORN FIRE INSURANCE MAP: September 1898

CHESTNUT



OHIO

DELAWARE

P U B L I C

A

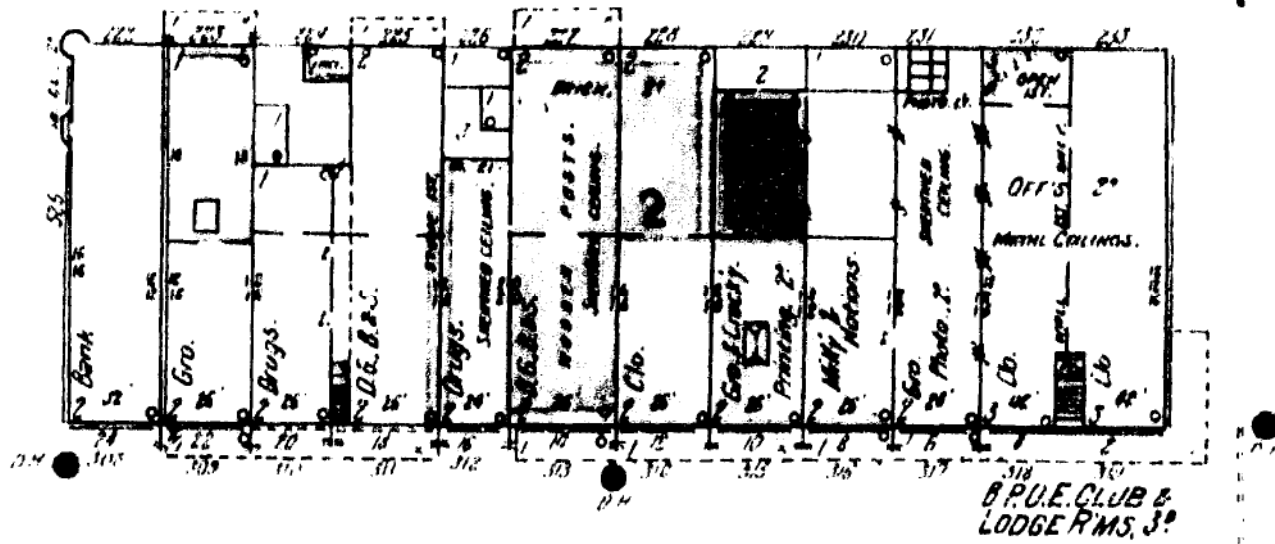


S Q U A R E

1898

SANBORN FIRE INSURANCE MAP: July 1907

4

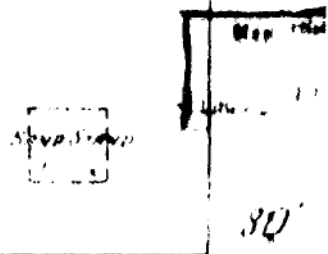
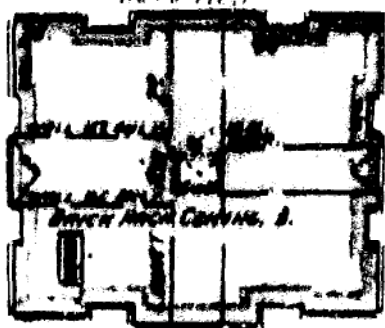


OHIO

N. DELAWARE

N. MAIN

BATES COUNTY COURT HOUSE.



SANBORN FIRE INSURANCE MAP: March 1914

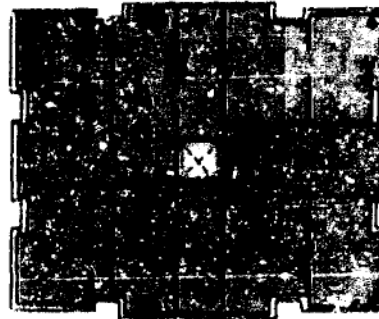


OHIO

N. DELAWARE

N. MAIN

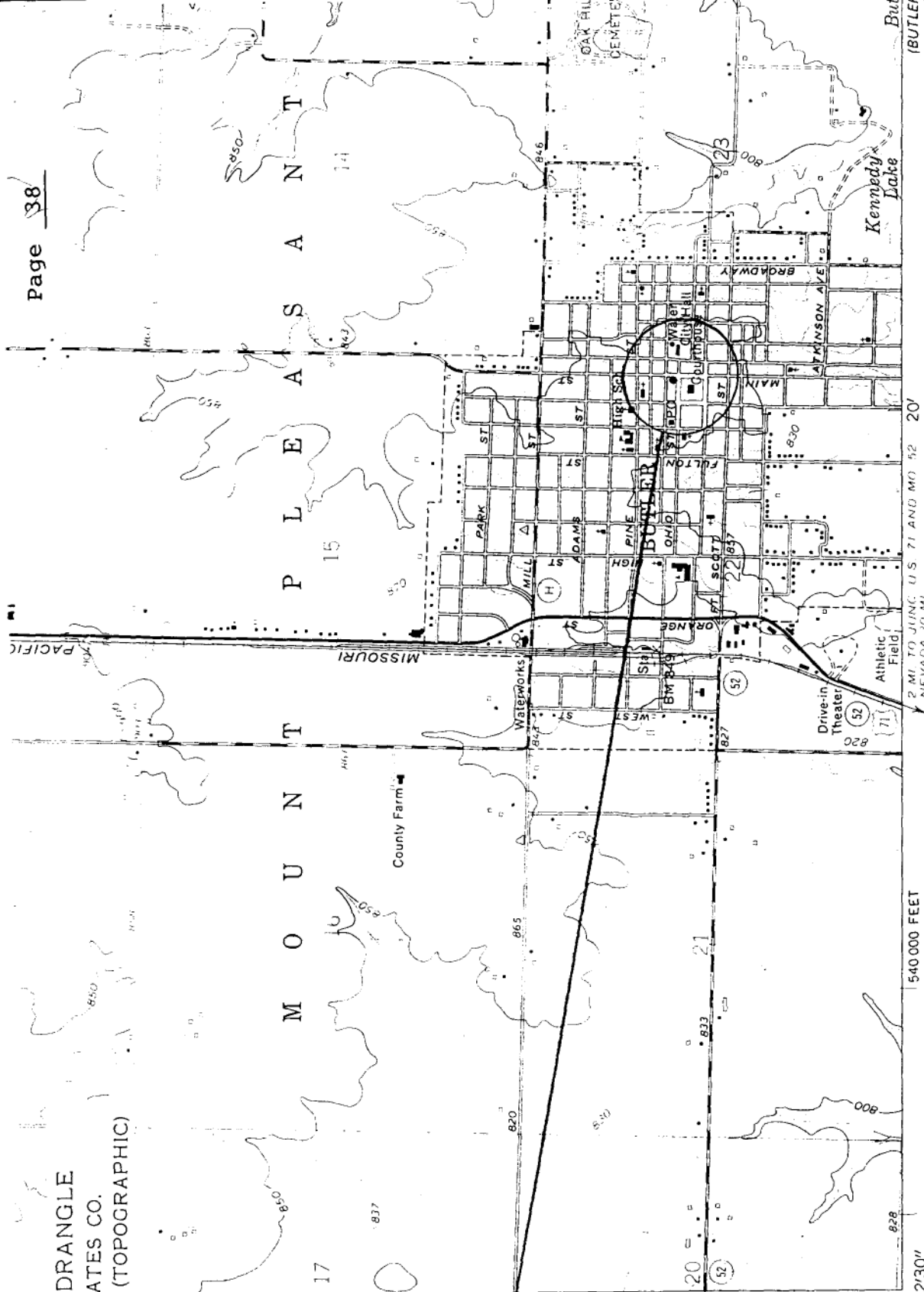
BATES COUNTY COURT HO.
NORTH STREET, LEWIS & CLARK



Hand
Stamp

Hand
Stamp

BUTLER QUADRANGLE
MISSOURI - BATES CO.
7.5 MINUTE SERIES (TOPOGRAPHIC)



Palace Hotel
Bates County, MO
15/383500/4234500

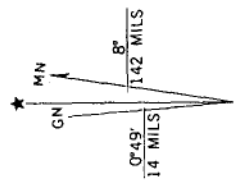
Mapped, edited, and published by the Geological Survey

Control by USGS and USC&GS

Topography by photogrammetric methods from aerial photographs taken 1958. Field checked 1961

Polyconic projection. 1927 North American datum
10,000-foot grid based on Missouri coordinate system, west zone
1000-meter Universal Transverse Mercator grid ticks,
zone 15, shown in blue

Red tint indicates area in which only landmark buildings are shown
Fine red dashed lines indicate selected fence and field lines where
generally visible on aerial photographs. This information is unchecked



CONTOUR IN
NATIONAL GEODETIC

THIS MAP COMPLIES WITH NA
FOR SALE BY U. S. GEOLOGICAL SURVEY, DENV
AND THE DIVISION OF RESEAR
MISSOURI DEPARTMENT OF NATI

UTM GRID AND 1961 MAGNETIC NORTH
DECLINATION AT CENTER OF SHEET

(NEW HOME)
7180 III NW

SENDER: COMPLETE THIS SECTION

- Complete items 1, 2, and 3. Also complete item 4 if Restricted Delivery is desired.
- Print your name and address on the reverse so that we can return the card to you.
- Attach this card to the back of the mailpiece, or on the front if space permits.

1. Article Addressed to:

Prost Builders, Inc.
3617 Route CC
Jefferson City, MO 65109

2. Article Number
(Transfer from service label)

7001 2510 0006 2079 6790

PS Form 3811, August 2001

COMPLETE THIS SECTION ON DELIVERY

A. Signature

X *Kauarch*

- Agent
- Addre:

B. Received by (Printed Name)

C. Date of Del

SEP 25 2002

D. Is delivery address different from item 1? Yes

If YES, enter delivery address below: No

3. Service Type

- Certified Mail Express Mail
- Registered Return Receipt for Merchar
- Insured Mail C.O.D.

4. Restricted Delivery? (Extra Fee)

Yes

Domestic Return Receipt

102595-01-1

**U.S. Postal Service
CERTIFIED MAIL RECEIPT**

(Domestic Mail Only; No Insurance Coverage Provided)

7001 2510 0006 2079 6790

| | |
|---|----------------|
| Postage | \$ |
| Certified Fee | |
| Return Receipt Fee (Endorsement Required) | |
| Restricted Delivery Fee (Endorsement Required) | |
| Total Postage & Fees | \$ 4.88 |

Postmark
Here

9.23

Sent To: DNR/State Historic Preservation Office
 Street or PO Box No.: 176
 City, State, ZIP+4: Jefferson City, MO 65102-0176

PS Form 3800, January 2001

See Reverse for Instructions





















