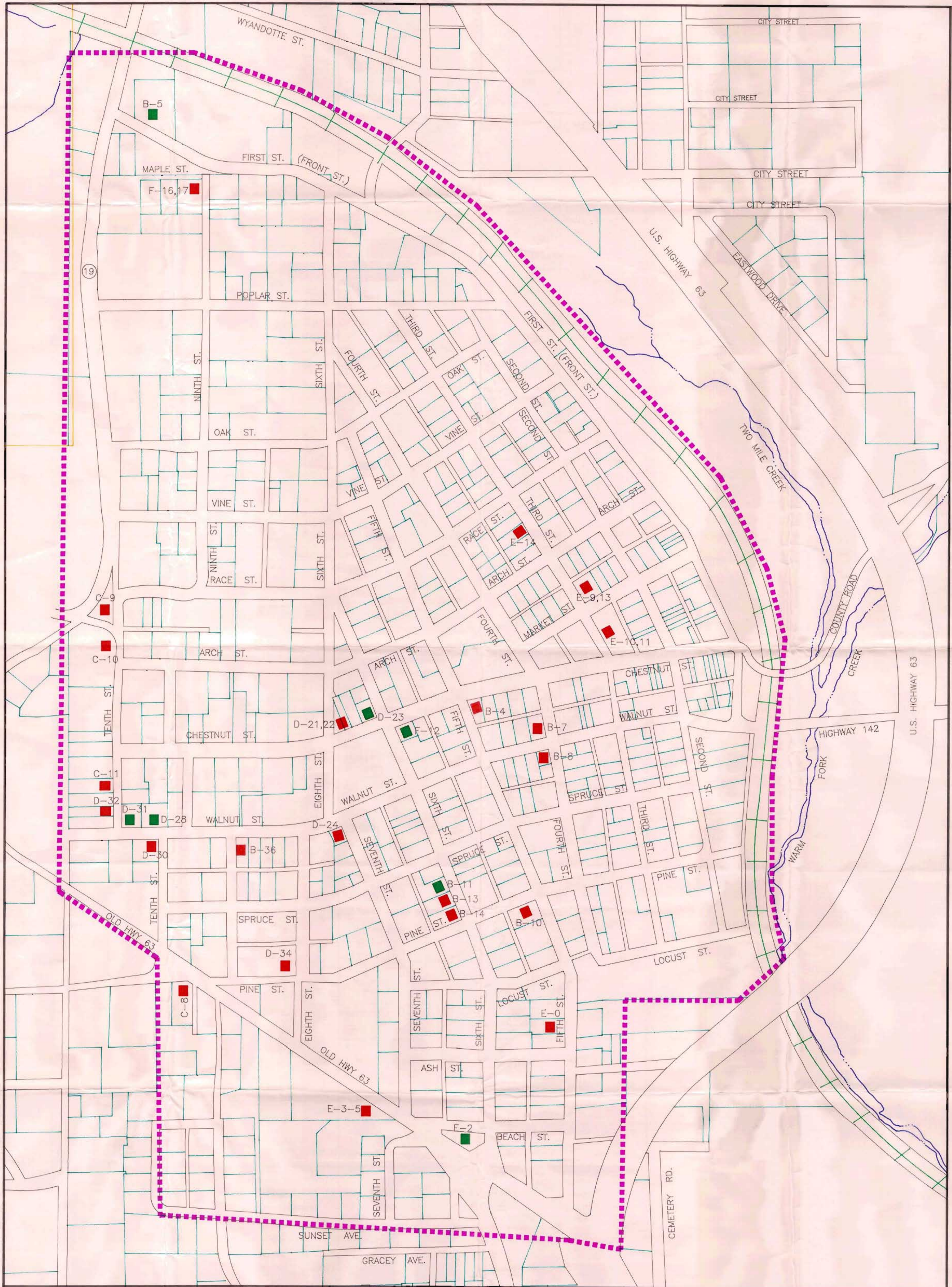


OZARK NATIVE ROCK MASONRY SURVEY
 THAYER, MISSOURI
 ZONE 1: WEST THAYER
 HISTORIC PRESERVATION PROJECT NUMBER 29-91-60032-197-A



ZONE I: WEST THAYER
 CONTRIBUTING PROPERTIES: ■
 NON-CONTRIBUTING PROPERTIES: ■

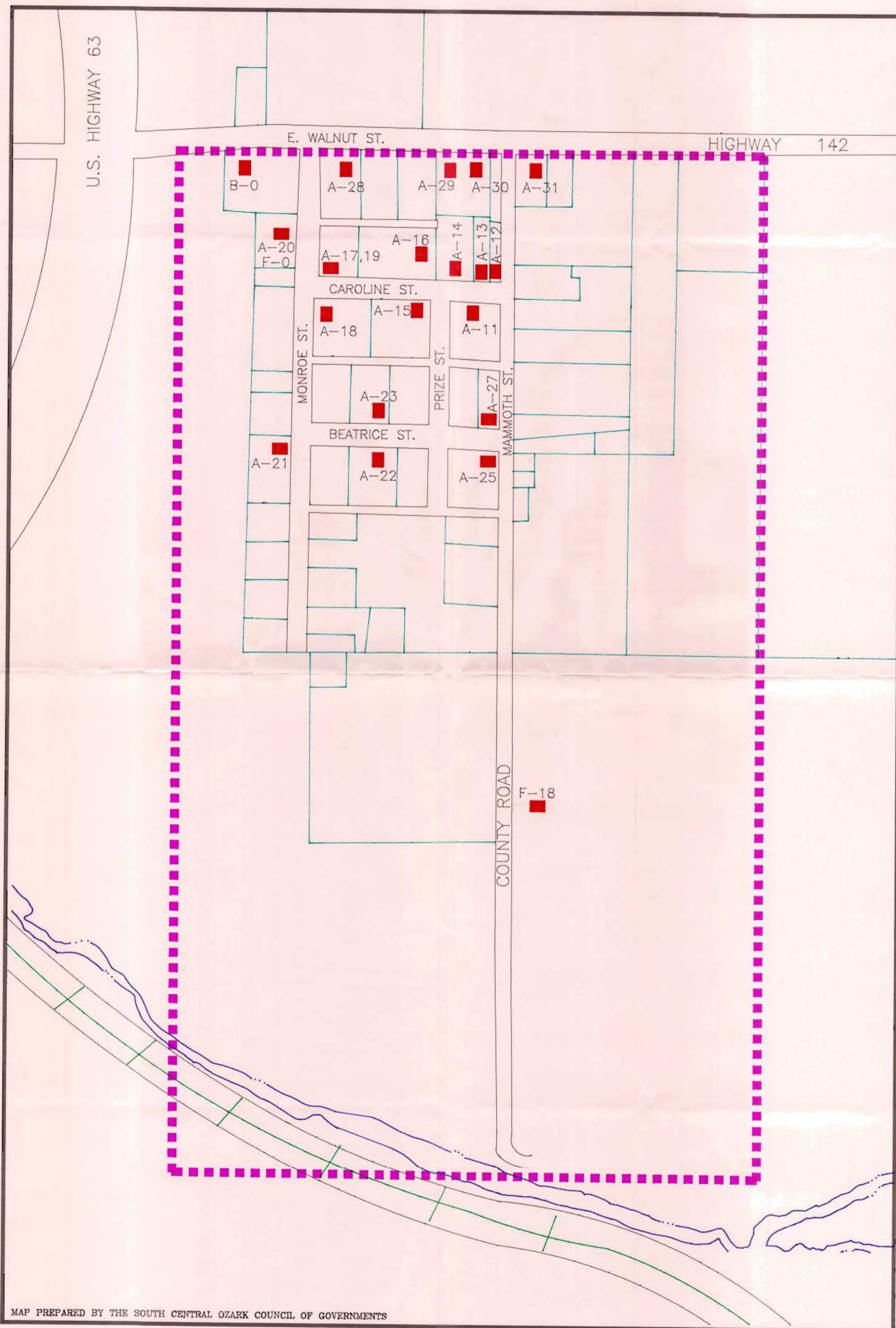
SURVEY PREPARED BY:

LINDA F. BECKER AND CYDNEY E. MILLSTEIN
 ARCHITECTURAL AND ART HISTORICAL RESEARCH
 KANSAS CITY, MISSOURI

FOR

THE SOUTH CENTRAL OZARK COUNCIL OF GOVERNMENTS
 CABOOL, MISSOURI

OZARK NATIVE ROCK MASONRY SURVEY
 THAYER, MISSOURI
 ZONE 2: SCHUTT ADDITION
 HISTORIC PRESERVATION PROJECT NUMBER 29-91-60032-197-A



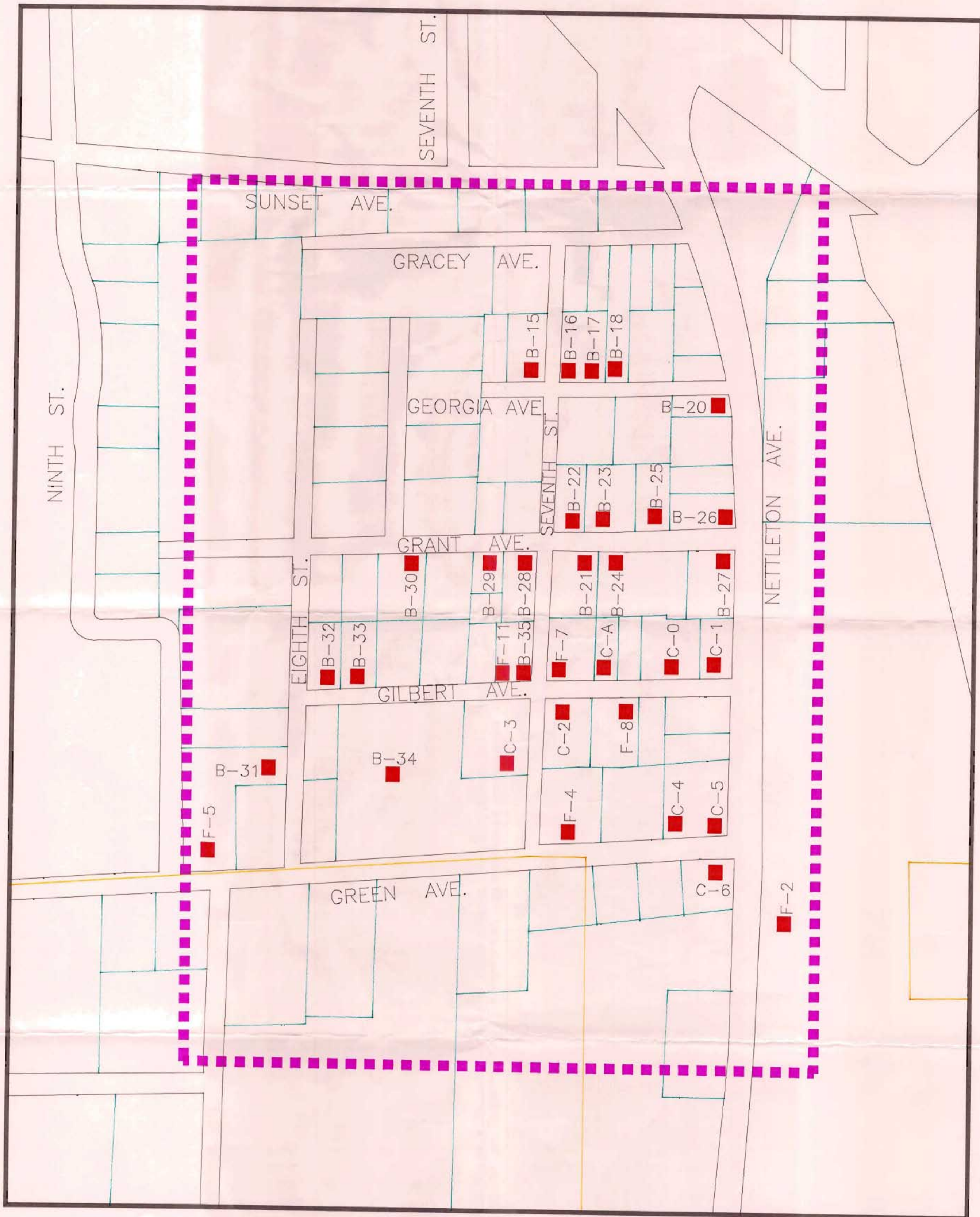
MAP PREPARED BY THE SOUTH CENTRAL OZARK COUNCIL OF GOVERNMENTS

ZONE 2: SCHUTT ADDITION
 CONTRIBUTING PROPERTIES: ■

SCHUTT ADDITION HISTORIC DISTRICT (POTENTIAL)

SURVEY PREPARED BY:
 LINDA F. BECKER AND CYDNEY E. MILLSTEIN
 ARCHITECTURAL AND ART HISTORICAL RESEARCH
 KANSAS CITY, MISSOURI
 FOR
 THE SOUTH CENTRAL OZARK COUNCIL OF GOVERNMENTS
 CABOOL, MISSOURI

OZARK NATIVE ROCK MASONRY SURVEY
 THAYER, MISSOURI
 ZONE 3: GREENTOWN
 HISTORIC PRESERVATION PROJECT NUMBER 29-91-60032-197-A



ZONE 3: GREENTOWN

CONTRIBUTING PROPERTIES: ■

GREENTOWN HISTORIC DISTRICT (POTENTIAL)

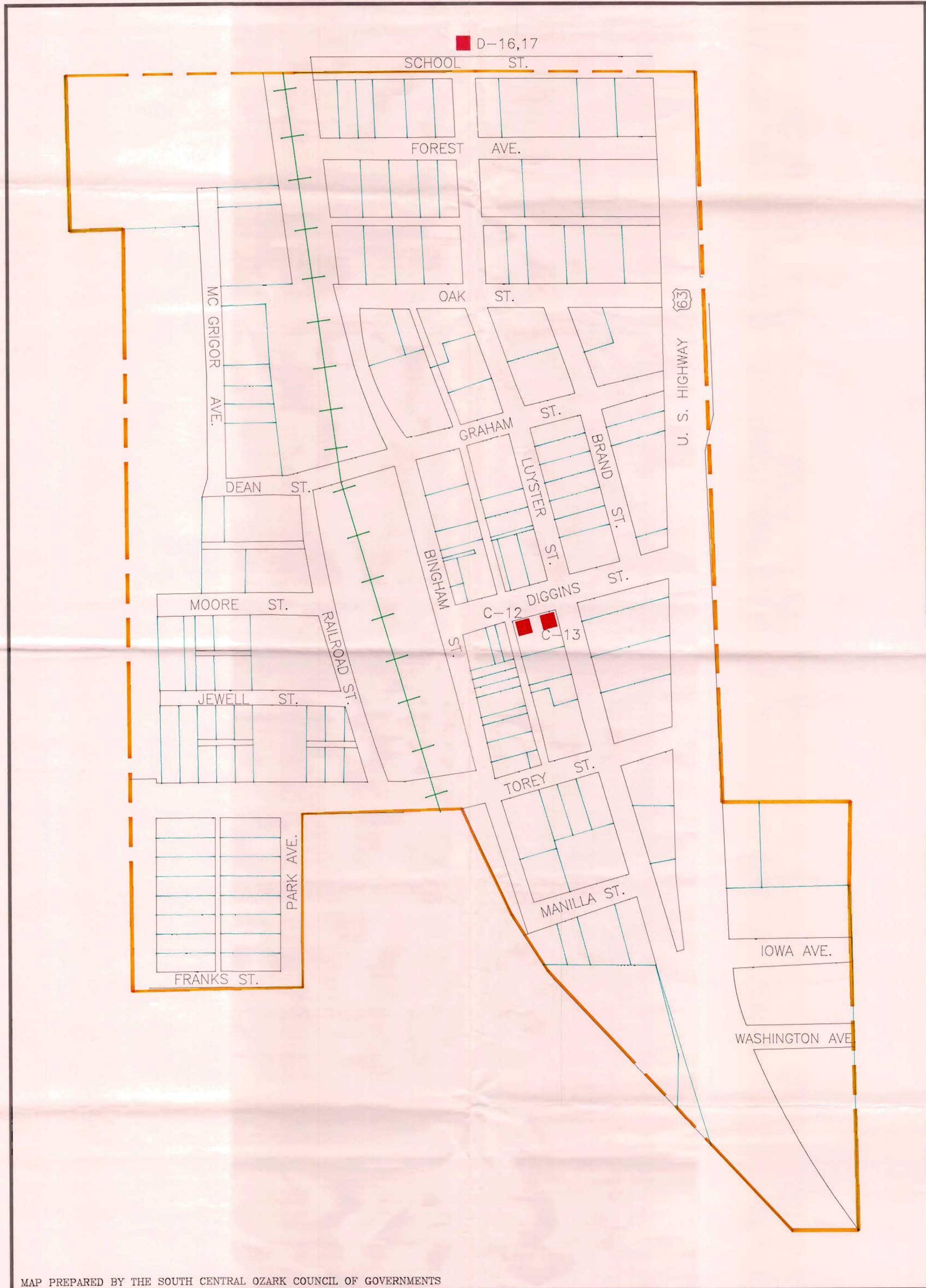
SURVEY PREPARED BY:

LINDA F. BECKER AND CYDNEY E. MILLSTEIN
 ARCHITECTURAL AND ART HISTORICAL RESEARCH
 KANSAS CITY, MISSOURI

FOR

THE SOUTH CENTRAL OZARK COUNCIL OF GOVERNMENTS
 CABOOL, MISSOURI

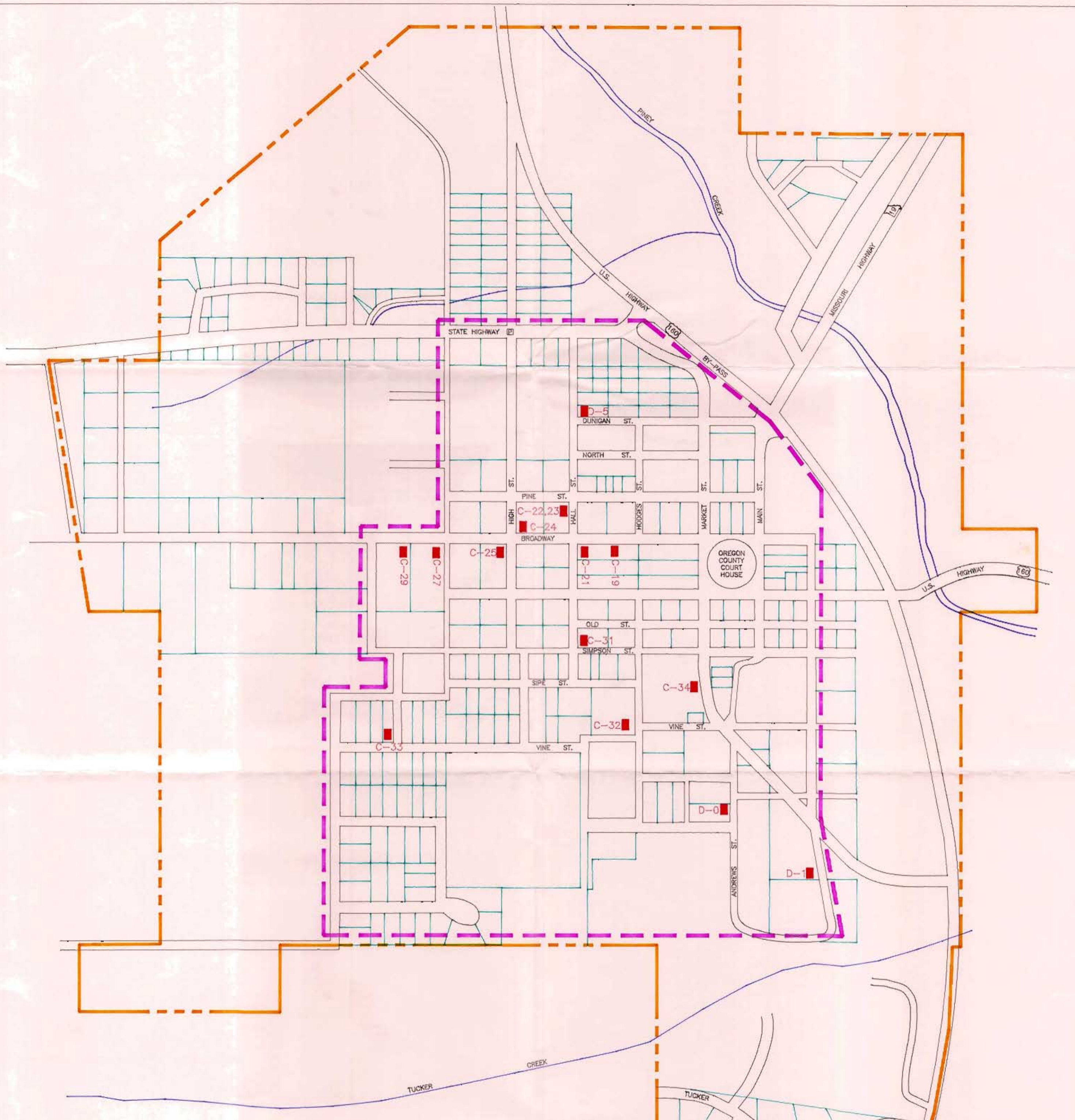
OSARK NATIVE ROCK MASONRY SURVEY
KOSHKONONG, MISSOURI
HISTORIC PRESERVATION PROJECT NUMBER 29-91-60032-197-A



MAP PREPARED BY THE SOUTH CENTRAL OSARK COUNCIL OF GOVERNMENTS

KOSHKONONG
CONTRIBUTING PROPERTIES: ■

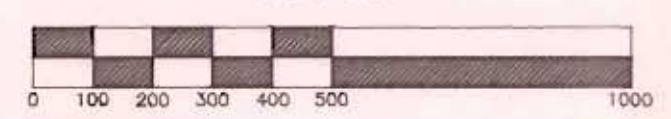
SURVEY PREPARED BY:
LINDA F. BECKER AND CYDNEY E. MILLSTEIN
ARCHITECTURAL AND ART HISTORICAL RESEARCH
KANSAS CITY, MISSOURI
FOR
THE SOUTH CENTRAL OSARK COUNCIL OF GOVERNMENTS
CABOOL, MISSOURI



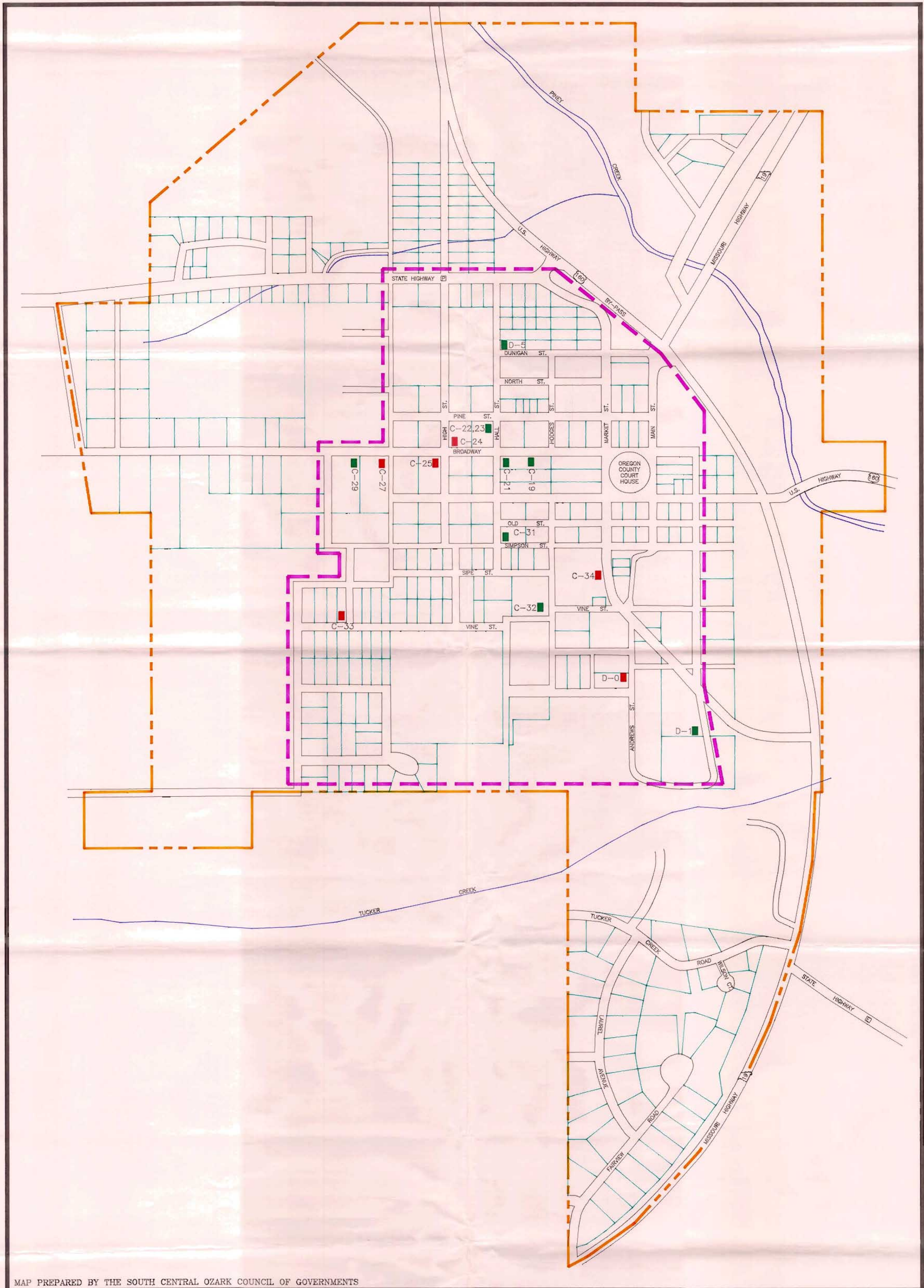
HISTORIC PRESERVATION
 ALTON, MISSOURI
 PROJECT NUMBER 29-91-60032-197-A



SCALE



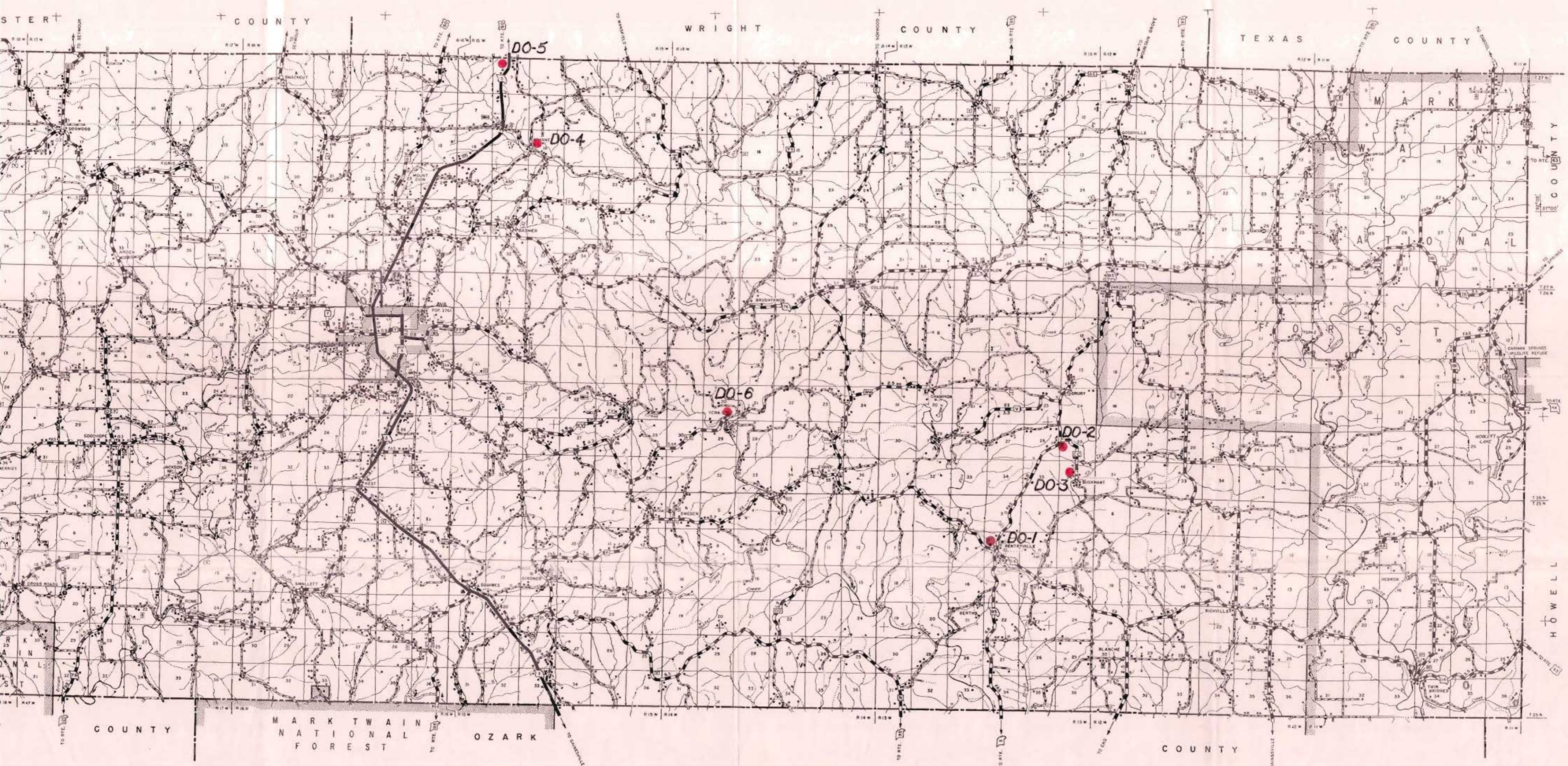
OZARK NATIVE ROCK MASONRY SURVEY
 ALTON, MISSOURI
 HISTORIC PRESERVATION PROJECT NUMBER 29-91-60032-197-A



MAP PREPARED BY THE SOUTH CENTRAL OZARK COUNCIL OF GOVERNMENTS

ALTON, MISSOURI
 CONTRIBUTING PROPERTIES: ■
 NON-CONTRIBUTING PROPERTIES: ■

SURVEY PREPARED BY:
 LINDA F. BECKER AND CYDNEY E. MILLSTEIN
 ARCHITECTURAL AND ART HISTORICAL RESEARCH
 KANSAS CITY, MISSOURI
 FOR
 THE SOUTH CENTRAL OZARK COUNCIL OF GOVERNMENTS
 CABOOL, MISSOURI



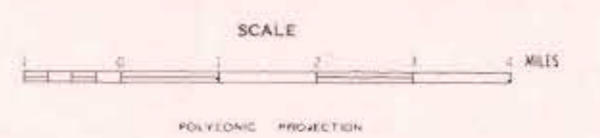
LEGEND

- Private Road
- Unimproved Road
- Graded and Drained Road
- Soil Surfaced Road
- Gravel or Stone Road
- Bituminous Road - Low Type
- Paved Road
- Frontage Road
- Divided Pavement
- City Streets
- Points between which Distances are Measured
- Interstate Numbered Highway
- U.S. Numbered Highway
- State Numbered Highway
- State Lettered Highway
- Designation of Road when Built
- Federal and Primary Highway System
- Federal and Secondary Highway System
- Railroad - Single Operating Company
- Railroads Adjacent - Separately Operated
- Railroad Station
- Railroad Grade Crossing
- Railroad Above
- Railroad Below
- Railroad Tunnel
- Military Air Field
- Commercial or Municipal Air Field
- Landing Area or Strip
- Airway Beacon Light
- Operated Ship and Barge Lines
- Dock Pier or Landing
- Ferry - Toll - Free
- Navigable Stream
- Dam
- Dam with Lock
- Dam with Road
- Wide Stream
- Narrow Stream
- Intermittent Stream
- Drainage Ditch
- Marsh or Swamp Land
- Reservoir - Pond or Lake
- Reservoir with Dam
- Levee or Dike
- Levee or Dike with Road
- Natural Ford
- Ferrel Ford or Low Water Bridge
- Bridge - General Equin longer than 20 feet
- Small Bridges Closely Spaced
- Drawbridge
- Suspension Bridge
- Arch Bridge
- Steel Truss Bridge
- City, Town and Village Limits
- Delimited Urban Area Line
- Park or Reservation Boundary
- State Line
- County Line
- Civil Township Line
- Congressional Township Line
- Section Line
- Land Grant Survey Line
- Transmission Line
- Retrow. Garbage
- Auto Graveyard
- Scrap Metal
- Scrap Building Material
- Sanitary Fill
- Other
- Correctional Institution
- Radio or Television Station
- Scenic Site
- Small Park
- Roadside Park
- Picnic Grounds
- Playground Ball Field etc.
- Bathing Beach or Pool
- Dive or Theatre
- Julkyards
- Dumps
- Journal Court or Motel
- Camp or Lodge
- Fish Hatchery
- Bird Sanctuary
- Game Farm or Preserve
- Country Club or Golf Course
- Fair Ground or Race Track
- Farm Unit
- Dwelling other than Farm
- Dwellings Closely Spaced
- Seasonal Dwellings
- Seasonal Dwellings Closely Spaced
- Hotel or Inn
- Church
- Hospital
- Cemetery
- Church with Cemetery Adjacent
- Store or Small Business
- Factory or Industrial Plant
- Sawmill - Stationary
- Mine or Quarry
- Murary
- School House
- Consolidated or Large School
- Post Office
- Town or Community Hall
- Mixed Cultural Features Closely Spaced
- County Home - Farm or Infirmary
- Pumping Station - Oil or Gas
- Combined Dwelling and Business
- Weigh Station
- Forest Ranger Station
- Forest Lookout Tower
- SHD Maintenance Shed
- State Highway Patrol Station
- State Capitol
- County Seat
- Other Cities, Towns and Villages



**GENERAL HIGHWAY MAP
DOUGLAS COUNTY
MISSOURI**

PREPARED BY THE
MISSOURI HIGHWAY AND TRANSPORTATION DEPARTMENT
DIVISION OF PLANNING
IN COOPERATION WITH THE
U.S. DEPARTMENT OF TRANSPORTATION
FEDERAL HIGHWAY ADMINISTRATION



DATE	DESCRIPTION	BY
3-1-48	STATE HIGHWAYS	T. D.
3-6-50	COMPLETE NEW INVENTORY	T. D.
	REVISIONS	