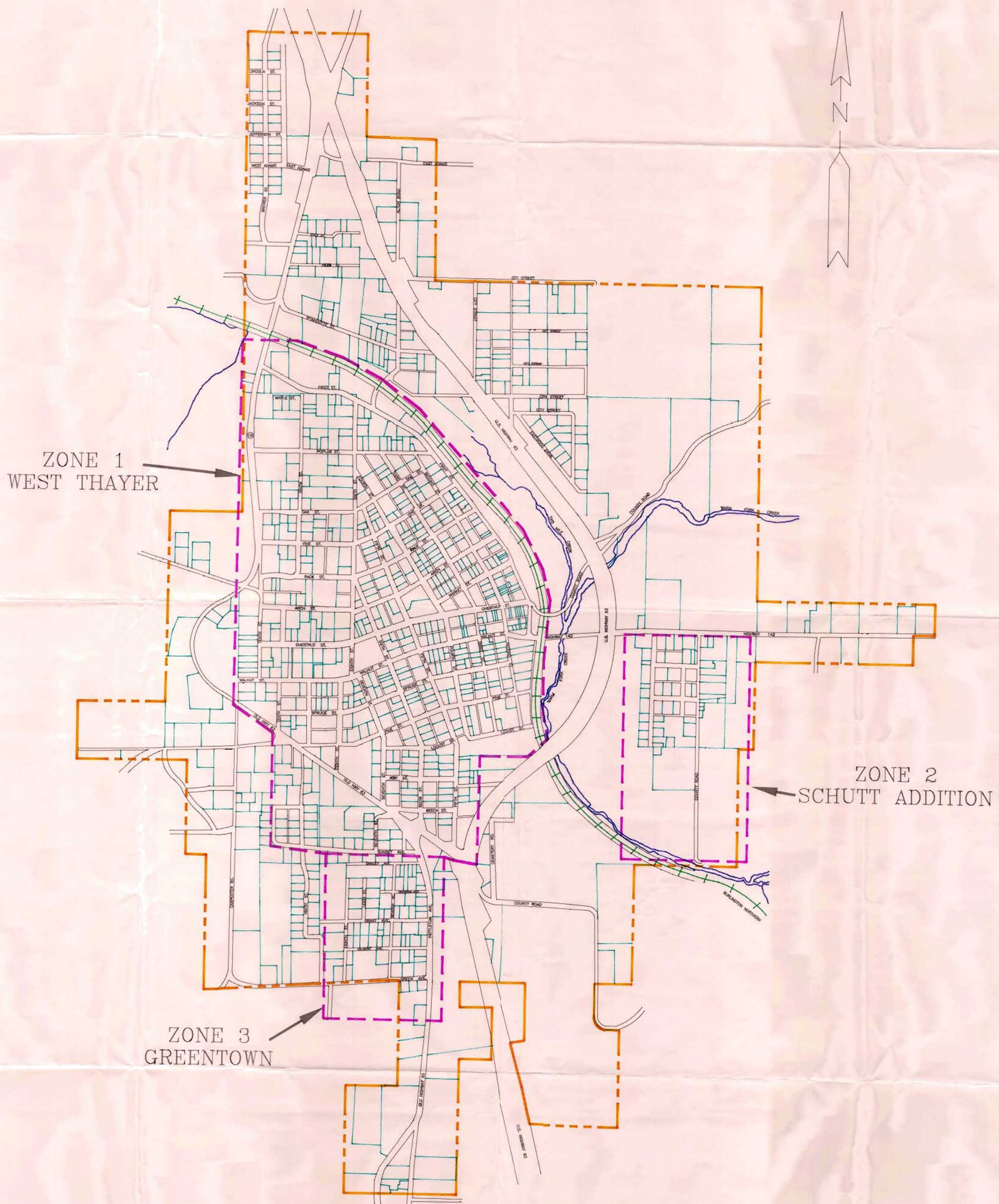


OZARK NATIVE ROCK MASONRY SURVEY  
THAYER, MISSOURI  
HISTORIC PRESERVATION PROJECT NUMBER 29-91-60032-197-A



MAP PREPARED BY THE SOUTH CENTRAL OZARK COUNCIL OF GOVERNMENTS

SURVEY PREPARED BY:  
LINDA F. BECKER AND CYDNEY E. MILLSTEIN  
ARCHITECTURAL AND ART HISTORICAL RESEARCH  
KANSAS CITY, MISSOURI  
FOR  
THE SOUTH CENTRAL OZARK COUNCIL OF GOVERNMENTS  
CABOOL, MISSOURI