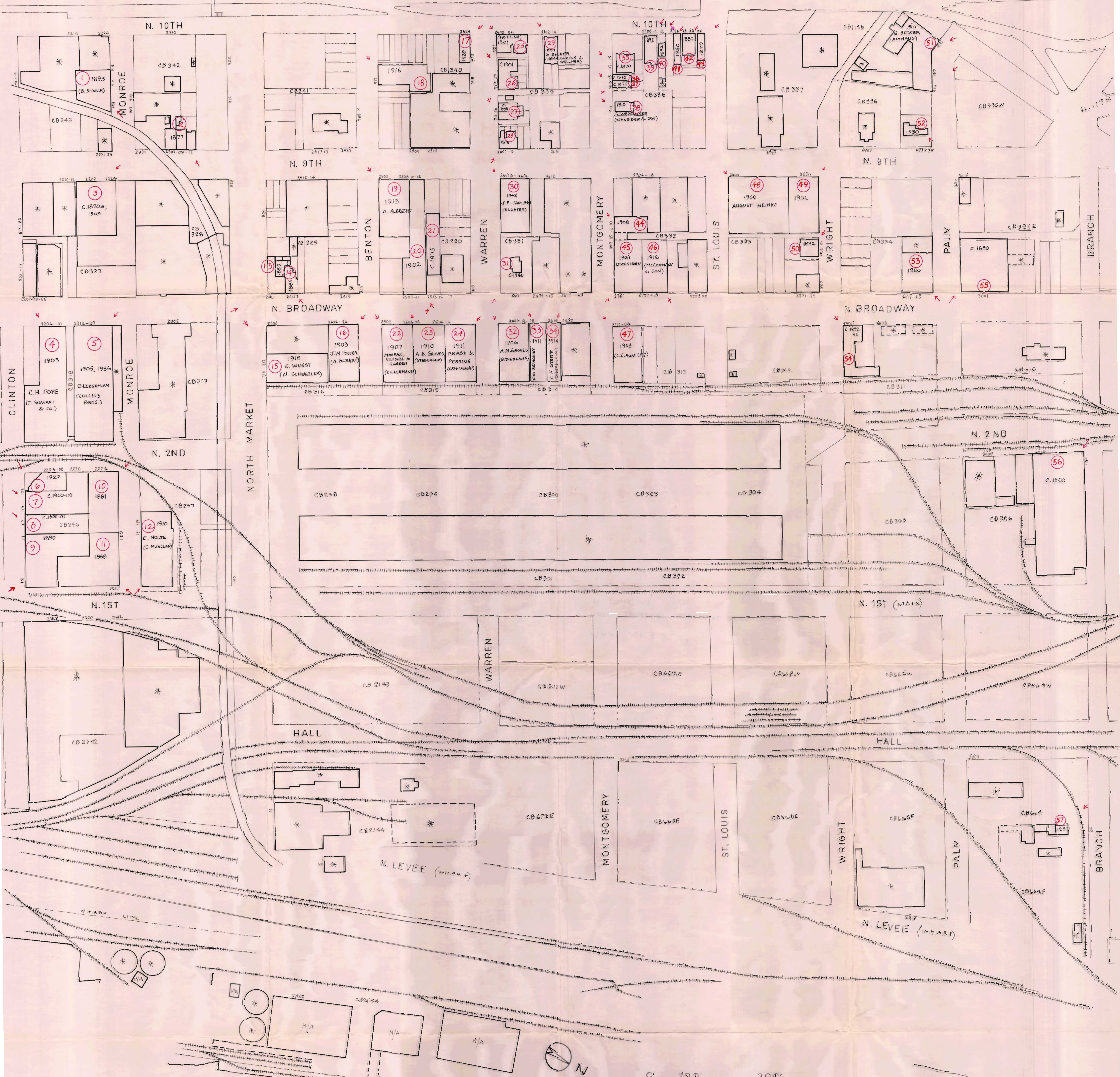


MARK TWAIN EXPRESSWAY



ARCHITECTURAL SURVEY OF NORTH BROADWAY INDUSTRIAL AREA II

PART 1 OF 3
NOVEMBER 1990 ST. LOUIS, MISSOURI
LANDMARKS ASSOCIATION OF ST. LOUIS, INC.

SURVEY: CYNTHIA LONGWISCH
MAP: PAT HAYS BAER

LEGEND:
 * BUILT PRIOR TO C. 1940 OR EXTENSIVELY ALTERED
 N/A NO ACCESS FOR DOCUMENTATION
 ○ SURVEY SHEET NUMBER
 (A) ARCHITECT
 (C) CONTRACTOR
 ↗ PHOTO ANGLE