

United States Department of the Interior
National Park Service
**National Register of Historic Places
Registration Form**

1. Name of Property

historic name Moberly Junior High School
other names/site number N/A

2. Location

street & number 101 North Johnson Street [N/A] not for publication
city or town Moberly [N/A] vicinity
state Missouri code MO county Randolph code 175 zip code 65270-1303

3. State/Federal Agency Certification

As the designated authority under the National Historic Preservation Act, as amended, I hereby certify that this nomination request for determination of eligibility meets the documentation standards for registering properties in the National Register of Historic Places and meets the procedural and professional requirements set forth in 36 CFR Part 60. In my opinion, the property meets does not meet the National Register criteria. I recommend that this property be considered significant nationally statewide locally.
(See continuation sheet for additional comments [].)

Mark A Miles Nov. 14, 2007
Signature of certifying official/Title Mark A. Miles/Deputy SHPO Date
Missouri Department of Natural Resources
State or Federal agency and bureau

In my opinion, the property meets does not meet the National Register criteria.
(See continuation sheet for additional comments [].)

Signature of certifying official/Title Date

State or Federal agency and bureau

4. National Park Service Certification

I hereby certify that the property is:

	Signature of the Keeper	Date of Action
<input type="checkbox"/> entered in the National Register. See continuation sheet [].	_____	_____
<input type="checkbox"/> determined eligible for the National Register. See continuation sheet [].	_____	_____
<input type="checkbox"/> determined not eligible for the National Register.	_____	_____
<input type="checkbox"/> removed from the National Register.	_____	_____
<input type="checkbox"/> other, (explain:)	_____	_____

**Moberly Junior High School
Randolph County, Missouri**

5. Classification

Ownership of Property	Category of Property	Number of Resources Within Property	
		Contributing	Non-contributing
<input checked="" type="checkbox"/> private	<input checked="" type="checkbox"/> building(s)	1	0 buildings
<input type="checkbox"/> public-local	<input type="checkbox"/> district	0	0 sites
<input type="checkbox"/> public-State	<input type="checkbox"/> site	0	0 structures
<input type="checkbox"/> public-Federal	<input type="checkbox"/> structure	0	0 objects
	<input type="checkbox"/> object	1	0 Total

Name of related multiple property listing.
_____ N/A _____

Number of contributing resources previously listed in the National Register.
_____ N/A _____

6. Function or Use

Historic Functions

_____ EDUCATION/school _____

Current Functions

_____ VACANT/NOT IN USE _____

7. Description

Architectural classification

_____ MODERN MOVEMENT/Art Deco _____

Materials

foundation _____ concrete _____
walls _____ brick _____
_____ stone _____
roof _____ ceramic tile _____
other _____ concrete _____

See continuation sheet []

Narrative Description See continuation sheet [x].

**Moberly Junior High School
Randolph County, Missouri**

**8. Statement of Significance
Applicable National Register Criteria**

A Property is associated with events that have made a significant contribution to the broad patterns of our history.

B Property is associated with the lives of persons significant in our past.

C Property embodies the distinctive characteristics of a type, period, or method of construction or represents the work of a master, or possesses high artistic values, or represents a significant and distinguishable entity whose components lack individual distinction.

D Property has yielded, or is likely to yield, information important in prehistory or history.

Criteria Considerations

Property is:

A owned by a religious institution or used for religious purposes.

B removed from its original location.

C a birthplace or grave.

D a cemetery.

E a reconstructed building, object, or structure.

F a commemorative property.

G less than 50 years of age or achieved significance within the past 50 years.

Narrative Statement of Significance

See continuation sheet [x].

9. Major Bibliographic References

Bibliography See continuation sheet [x].

Previous documentation on file (NPS):

- preliminary determination of individual listing (36 CFR 67) has been requested
- previously listed in the National Register
- previously determined eligible by the National Register
- designated a National Historic Landmark
- recorded by Historic American Buildings Survey

- recorded by Historic American Engineering Record

Areas of Significance

- _____
Architecture
- _____
Education
- _____
- _____
- _____

Period of Significance

1917-1957

Significant Dates

1917

1930

Significant Person(s)

N/A

Cultural Affiliation

N/A

Architect/Builder

Abt, Ludwig, Architect

Peterson, Lawrence, builder

Primary location of additional data:

- State Historic Preservation Office
- Other State Agency
- Federal Agency
- Local Government
- University
- Other:

Name of repository:

**Moberly Junior High School
Randolph County, Missouri**

10. Geographical Data

Acreege of Property: less than one acre

UTM References

A. Zone	Easting	Northing	B. Zone	Easting	Northing
15	547890	4363224			

C. Zone	Easting	Northing	D. Zone	Easting	Northing

[] See continuation sheet

Verbal Boundary Description

(Describe the boundaries of the property on a continuation sheet.)

Boundary Justification

(Explain why the boundaries were selected on a continuation sheet.)

11. Form Prepared By

name/title Debbie Sheals and Becky Snider
organization Private Contractor date July, 2007
street & number 29 S. 9th St. Suite 204 telephone 573-874-3779
city or town Columbia state Missouri zip code 65201

Additional Documentation

Submit the following items with the completed form:

Continuation Sheets

Maps

- A **USGS map** (7.5 or 15 minute series) indicating the property's location.
- A **Sketch map** for historic districts and properties having large acreage or numerous resources.

Photographs

Representative **black and white photographs** of the property.

Additional Items

(Check with the SHPO or FOP for any additional items)

Property Owner

(Complete this item at the request of SHPO or FPO.)

name HFM Partnership, L.C., Attn: Joey Holmgren
street & number 609 Wolf Trail
telephone 573.443.8050
city or town Columbia state MO zip code 65201-6781

United States Department of the Interior
National Park Service

National Register of Historic Places
Continuation Sheet

Section number 7 Page 1

Moberly Junior High School
Randolph County, Missouri

Summary: The Moberly Junior High School, at 101 North Johnson Street, is a brick school building with a central entrance tower and a symmetrical façade. It sits on a corner lot at the edge of the central business district of Moberly. This is the only resource on the lot, which includes a paved parking area to the rear. The building has two main sections; the main block, which faces east to Johnson Street, dates to 1930, and a large auditorium wing to the rear was built in 1917. The rear section was built as an addition to an older school that later burned. The front section has two stories above a high basement level and the auditorium wing has three full stories above-grade. The main block has an H-shaped plan, with projecting end bays, and a narrow hyphen centered in the back wall links it to the auditorium, which has a simple rectangular plan and blocky form. The 1930 part of the building has simple Art Deco styling, and the auditorium utilizes restrained Classical Revival detailing. The interior of the building, like the exterior, is highly intact. Wide double-loaded corridors on the first and second floors provide access to the original classrooms, and to a pair of open staircases that link all three levels of the school. Most of the top two floors of the auditorium are taken up by a combination gymnasium/auditorium, and there are classrooms in its lower level. Most original doors and other millwork remain in place inside the building, and there have been few changes to floorplans or finishes over the years. The installation of new windows in the late 20th century constitutes the only notable exterior alteration the building has seen, and it appears today very much as it did when classes started in 1930.

Elaboration: The Moberly Junior High School occupies a large lot at the southwest corner of Johnson and Rollins Streets. Johnson Street runs along the east side of the property, and Rollins borders the lot to the south. The building is close to the east end of the property, with a small amount of open land behind it, to the west. Haygood Street forms the western boundary of the lot. The local post office adjoins the east end of the property to the north, and there is a public park along the west end of the northern boundary. The school lot slopes gently to the west; the basement level of the front section is partly below ground, while the lower level of the auditorium is on-grade. Mature shade trees located near Johnson Street constitute the only landscaping on the property; the paved parking lot is in the northwest corner of the lot, and the rest of the site has a simple grass lawn.

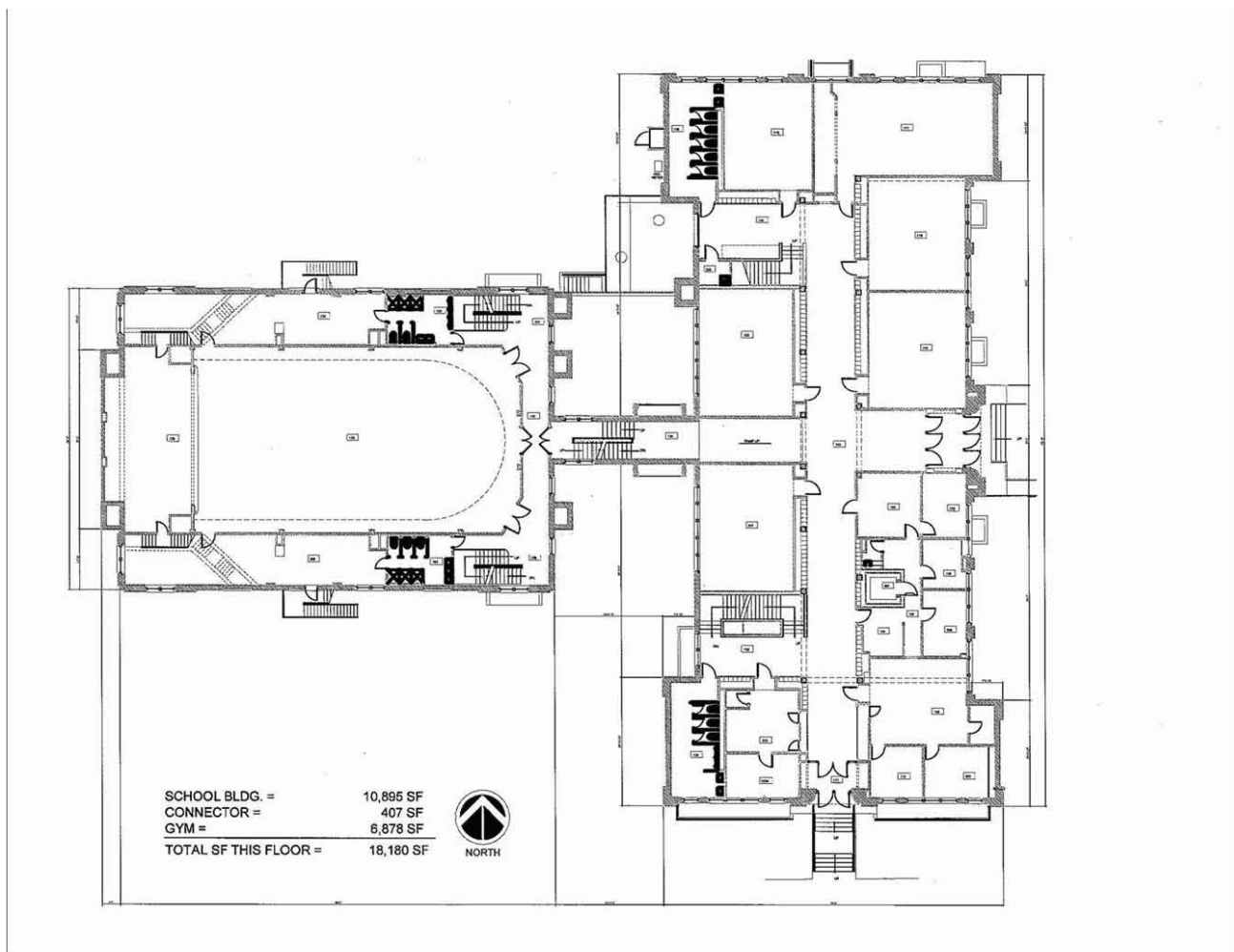
United States Department of the Interior
National Park Service

National Register of Historic Places
Continuation Sheet

Section number 7 Page 2

Moberly Junior High School
Randolph County, Missouri

Figure One. First Floor Plan. Drawing by Central Design Group, Columbia, MO



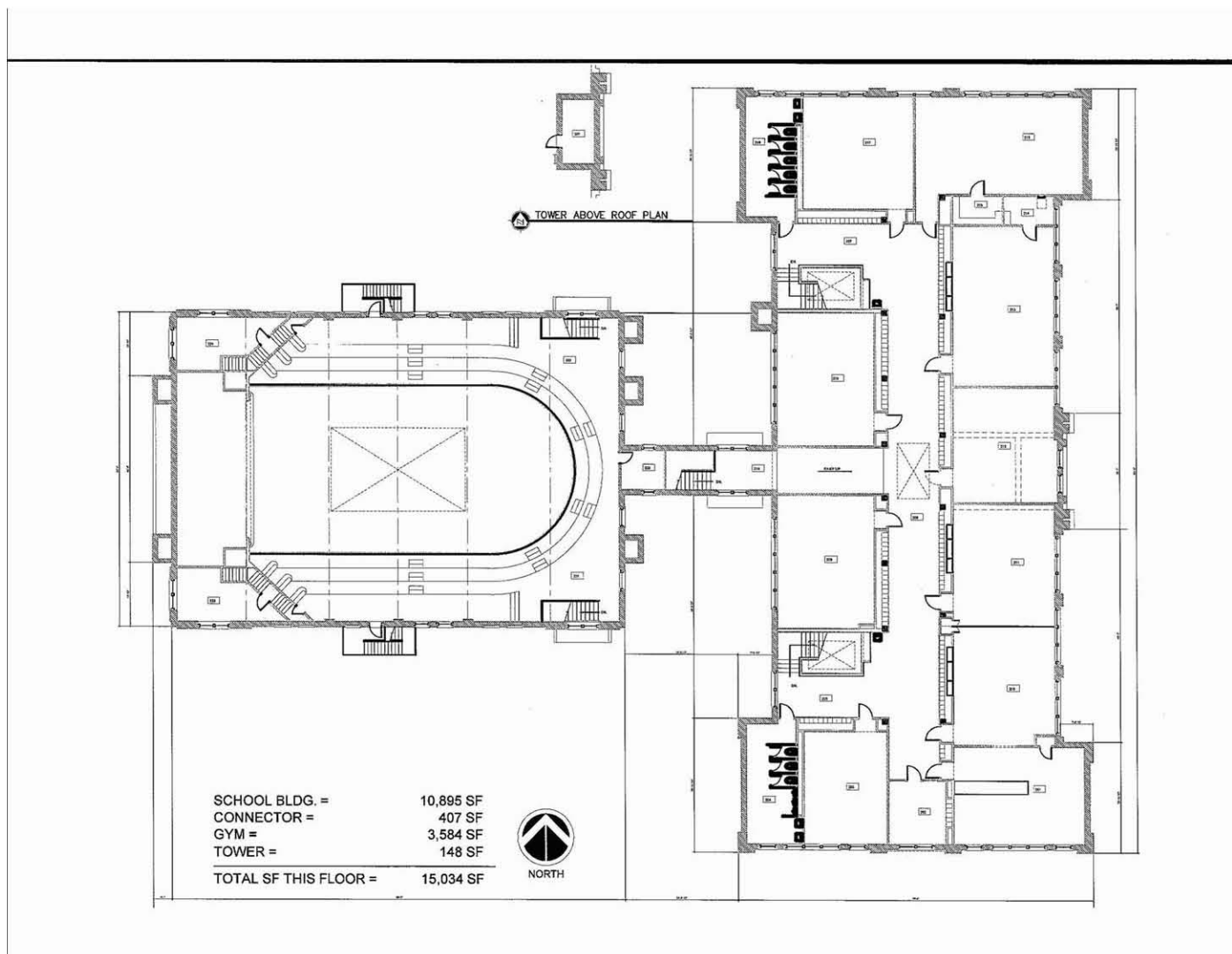
United States Department of the Interior
National Park Service

National Register of Historic Places
Continuation Sheet

Section number 7 Page 3

Moberly Junior High School
Randolph County, Missouri

Figure Two. Second Floor Plan. Drawing by Central Design Group, Columbia, MO



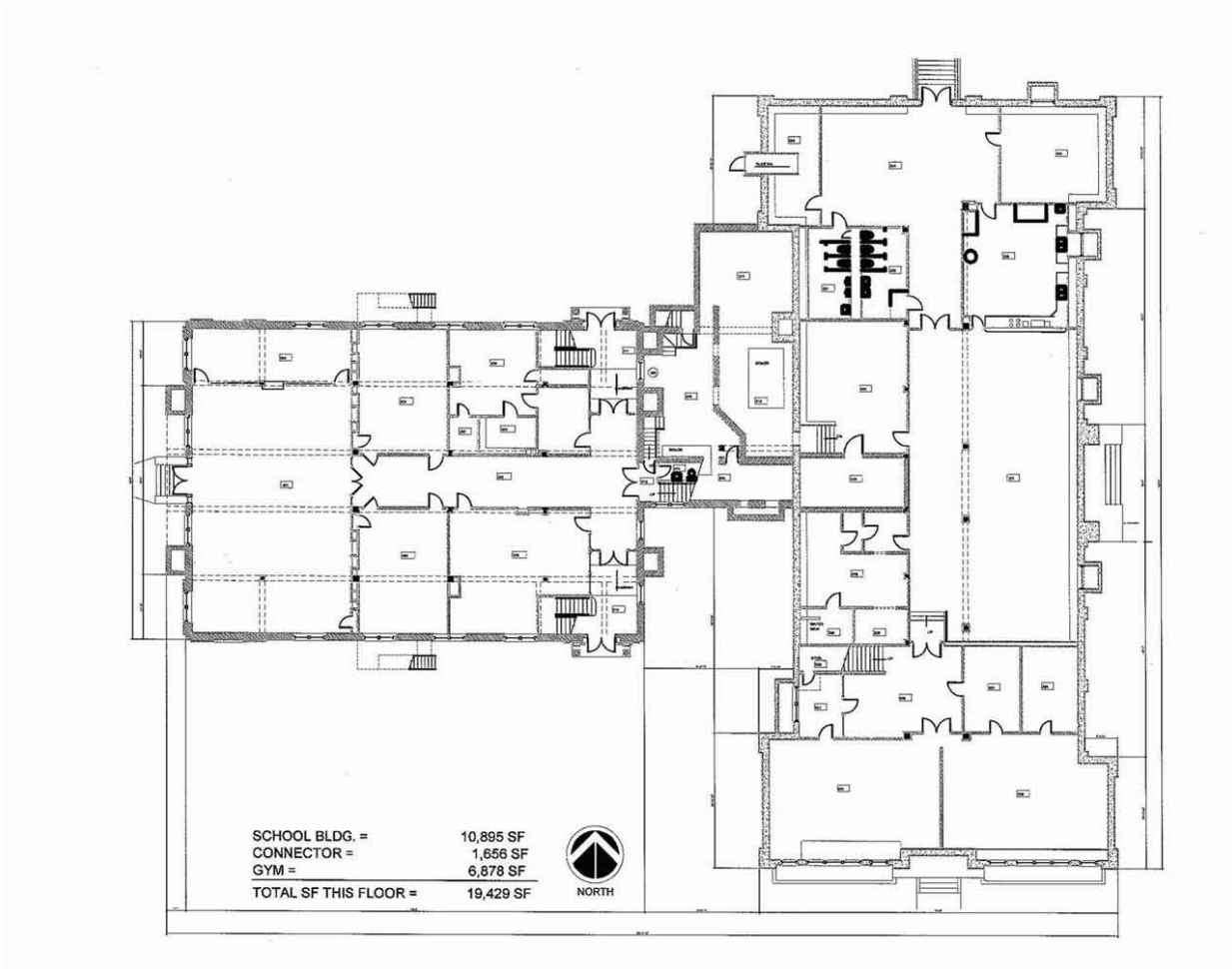
United States Department of the Interior
National Park Service

National Register of Historic Places
Continuation Sheet

Section number 7 Page 4

Moberly Junior High School
Randolph County, Missouri

Figure Three. Basement Plan. Drawing by Central Design Group, Columbia, MO



United States Department of the Interior
National Park Service

National Register of Historic Places
Continuation Sheet

Section number 7 Page 5

Moberly Junior High School
Randolph County, Missouri

The main block of the school is set close to the street, facing east. The walls are constructed of a textured variegated red brick, with accents of pale limestone and/or cast stone. It is a low-slung building with a central entrance tower and projecting end bays. The wide end bays, which have no windows on the facade, feature ornamental brickwork with intersecting diamonds set into long rectangular panels and accented with small stone accents. Corner piers on the end bays have simple stone caps, and small rectangular panels accent the rooflines of the end bays. (Right, and photos 3 and 10.)



The wide bays between the ends and the entrance tower each have three sets of windows per floor, separated by simple flat brick piers. Each set of windows has three, 6/6 windows that are separated by wide mullions. The windows contain newer aluminum sashes that have profiles and muntin patterns similar to historic windows, and they do not detract from the original character of the façade.



The central entrance tower dominates the front of the school. It extends a half story above the main roof level and is topped by a low pyramidal hipped roof that is covered with ceramic tile roofing and topped with a small ball finial. A flat stone panel just below the roofline reads "Junior High School." The sides of the tower are stepped, and a series of narrow piers along the edges enforce the overall vertical composition of the tower. The

piers have tall narrow ornamental stone accent panels, and the two windows above the doorway are topped with large polygonal stone tablets that are adorned with low relief sculpture. The sculptural accent pieces on the building generally utilize stylized floral motifs, although the lowest set of accents on the tower, like

United States Department of the Interior
National Park Service

National Register of Historic Places
Continuation Sheet

Section number 7 Page 6

Moberly Junior High School
Randolph County, Missouri

those on the end bays of the facade, seem to be based upon letters more than plant life. The top panels on the side bays seem to use A's or V's, and the lower tower panels have what appear to be stylized S's. ("A" could be after the architect, Ludwig Abt; a reason for the use of an "S" is unclear.)

One of the largest, and arguably most interesting, bands of ornament on the building runs across the top of the wide doorway at the base of the entrance tower. That panel features a frieze of stylized medieval-looking elves that are happily performing a variety of tasks (all are smiling). The actions depicted appear to be related to various areas of study, presumably to inspire the students that would pass beneath them on a daily basis. Two in the center are seated at a table, and one of them is operating what looks like a typewriter. Other activities shown include operating a spinning wheel (presumably in reference to home economics), and doing some sort of carpentry project (manual training). Seated elves in the ends of the frieze appear to be representing science and literature. The "science" elf is holding a round object that could be a globe, and he has what appears to be chemistry apparatus arranged around his feet. The "literature" elf holds what is likely a book, and at his feet rests an inkwell and quill pen. The frieze is supported by fluted stone panels that curve inward to the entrance doors. The aluminum doors themselves are probably newer; the opening itself is unchanged.



United States Department of the Interior
National Park Service

National Register of Historic Places
Continuation Sheet

Section number 7 Page 7

Moberly Junior High School
Randolph County, Missouri

The south elevation of the main block of the building, which faces Rollins Street, serves as a second façade. (Photo 4.) It also has a central entrance bay, and the wide doorway there leads directly to the central hallway on the interior. The entrance bay is topped by a simple pediment, with smaller side piers and a system of ornament that is simpler, but complementary to, that used on the front tower. The south doorway is very much like the one on the façade, with the same type of curved and fluted panels by the doors, and an ornamental frieze above. The frieze over that door very much like the one over the east doors, and even uses the same elf figures, except that the south frieze is not as wide, and therefore has fewer elves; the spinning wheel and carpentry elves were omitted from this one. (Photo 5.) The rest of the south elevation is filled with windows, and edged with heavy brick piers. The windows on this wall, like those on north and west walls of the main block, are newer metal windows, with 1/1 sashes that have opaque panels in the top sashes. The original window openings are unchanged, however, and the overall impact of the new windows is not overwhelming. The basement level on this side is partially above grade, and wide window wells with pipe railings provide access to large lower level windows along the base of the wall.

The north and west sides of the main block utilize similar compositions. The north end wall is nearly identical to the south elevation, except that it has no doorway, and most of the basement level there is underground. The back, or west wall has the same type of projecting end bays found on the façade, with window-filled intermediate bays next to them.

On the back wall, the area opposite the front entrance tower contains a narrow connector that leads to the large auditorium wing on the back of the lot. The connector is just wide enough to hold a hallway and stairs at the first and second floors, and at the basement level is extends northward to house a boiler room and other support spaces. The connector is faced with the same type of brick used on the main block of the school, and it has little to no architectural detailing. Windows in that section contain newer sashes, in original openings that are unchanged.

The auditorium pre-dates the main block of the school; it was built in 1917 as an addition to a late 19th century school that occupied this property before the current main block was built in 1930. It has a simple plan and a heavy cubic form, and is built of a variegated red brick that is similar to that used on the front section. Although it is about the same height as the main block of the building, the slope of the lot allows all three floors in this section to be above grade.

United States Department of the Interior
National Park Service

National Register of Historic Places
Continuation Sheet

Section number 7 Page 8

Moberly Junior High School
Randolph County, Missouri

The north and south elevations of the auditorium wing are nearly identical, with widely spaced pairs of windows at each floor, and brick string courses at the water table and just above and below the third floor windows. Open metal fire escapes are located near the center of each elevation. Flat stone blocks are used for accents at the corners of the building and at several of the window openings, and the window sills are of the same type of smooth pale stone. The stone accents and brick patterns used in the end bays on the front section echo that ornamental pattern and help to unify the designs of the two sections. (Photo 6.) The lower two floors of the auditorium have taller windows than the top floor, and those in the center are set into arched openings. The tops of those arches are filled with header bond brickwork that appears to be original. Several of the window openings in the auditorium wing have been infilled with brick that is similar to that used on the main walls. That brick infill, which appears to be several years old, is set back from the edge of the walls and has not damaged the original openings or had a significant impact upon the general patterns of fenestration for this part of the school.

The north and south walls of the auditorium also contain large formal entranceways. The two doorways, which are located near where the auditorium connects to the main block, are identical. Each contains a double doorway that is set off by a shallow Classical Revival style portico of limestone. The porticos feature slender Ionic columns that support fairly plain entablatures. Short paneled walls top the sides of the porticos, and large stone panels above the doorways each contain the word AUDITORIUM. The formality of the auditorium entrances reflect the early function of this part of the building, which was used as a public assembly space for a number of community and school functions.

The back wall of the auditorium wing has large central bay that corresponds to the backstage area within. That bay extends out on the top two floors and has mostly stuccoed walls, with strips of brick accents that match the



United States Department of the Interior
National Park Service

National Register of Historic Places
Continuation Sheet

Section number 7 Page 9

Moberly Junior High School
Randolph County, Missouri

surrounding masonry. Although the stucco seems somewhat stark in comparison to the rest of the building, this appears to be an early or original feature. A recessed area at the base of that center back bay contains a simple doorway flanked by windows, and windows in all three floors of the side bays on that wall match those on the other parts of the rear wing.

The interior of the school is as intact as is the exterior. The two formal entrances in the main block of the school open to a wide central hallway that is lined with lockers. The south entrance is flanked on the interior by display cases, and most of the hallways are lined with built-in metal lockers. Open staircases at either end of the building are topped by large skylights, and the lower walls of the halls and stairs are all sheathed with gold-glazed ceramic blocks. The large classrooms that line the hallways on the first and second floors have seen remarkably few changes over the years. Most retain original wall and ceiling plaster, and several also have early built-in chalk boards. A large classroom on the second floor features a paneled wood folding screen that allows the room to be divided into two smaller classrooms as needed. (Photo 12.) The basement of the 1930 section has classrooms on the south end, where the grade permits the use of larger windows, and the rest of that level contains classroom and support space.

Secondary hallways lead to the auditorium wing on the first and second floors. Those halls have sloped floors, to bridge a difference in the ceiling heights of the two sections. The auditorium wing has classrooms and support spaces at the basement level, along with small entrance foyers that serve the two formal entrances. Each of those foyers has a set of stairs to the upper levels, along with a second set of doors that lead to the other rooms on the ground floor. (Presumably the second set of doors could remain locked, to allow public use of the auditorium without leaving the entire building open.)

The large auditorium, which doubles as a gymnasium, fills most of the top two levels in that wing. It is a relatively utilitarian space, with a raised stage on the west end, and a curved balcony around the other three sides. The stage opening has a simple flat-topped proscenium, and there is a large back stage area. The ceiling has an open metal truss system, and the balcony is fronted by a simple pipe railing. The top floor windows line the walls of the balcony; those that have been bricked in are covered with plaster or gypboard on the inside, although their wood sills and aprons sills remain in place.

Finishes throughout the building are largely intact. Most rooms still have early or original millwork, including mullioned classroom doors, very simple door

United States Department of the Interior
National Park Service

National Register of Historic Places
Continuation Sheet

Section number 7 Page 10

Moberly Junior High School
Randolph County, Missouri

and window trim, and some built-in bookcases. The installation of the modern windows had no a noticeable impact upon interior openings or surround finishes. Several of the windows in the 1930 section have window sills and aprons of the same type of glazed ceramic tile used on the walls of the hallways. Most walls and ceilings still have their early plaster finishes, and those ceilings are at their original heights. There are a few areas, probably less than 20 percent of the total, that have been remodeled in modern times, with drywall or paneled walls, and dropped ceilings. In most cases, that type of change took place with an original classroom or office suite, and there have been no changes of note to the interior floorplans of the school.

Inside and out, the Moberly Junior High School looks much as it did when it was put into service in the fall of 1930. It is immediately recognizable to its period of significance and it stands as a highly intact link with early 20th century public education in Moberly.

United States Department of the Interior
National Park Service

National Register of Historic Places
Continuation Sheet

Section number 8 Page 11

Moberly Junior High School
Randolph County, Missouri

Summary: The Moberly Junior High School Building, at 101 North Johnson Street in Moberly, was constructed between 1917 and 1930. It was Moberly's first junior high school, and is today one of the oldest public school buildings left in the community. As such, it is locally significant under Criterion A in the area of EDUCATION. Located on the same site as the first and second public school buildings in Moberly, the Junior High School was created during a major school system reorganization and building campaign that took place locally in the late 1920s and early 1930s. The back section of the building, an auditorium wing, is the oldest part of this school; it was built in 1917, as an addition to an early public school on the site. The current main block of the building was built after that school was destroyed by fire, and the building in its current form was first used during the academic year of 1930-31.

The building is also locally significant under Criterion C in the area of ARCHITECTURE, as an example of the work of noted Moberly architect, Ludwig Abt. Abt was one of Moberly's most prominent architects in the early years of the 20th century. He designed many of the town's most notable public buildings of his time, including the Fourth Street Theatre, the National Guard Armory, and the Moberly Federal Building. He served as the principal architect for the Moberly School District during the building program that produced, in addition to this building, three other new public school buildings, and he is credited with designing schools in more than twenty other Missouri towns as well. The period of significance for the Moberly Junior High, one of only two Abt-designed schools left in Moberly, extends from 1917, the date of the auditorium wing, to 1958, the standard fifty-year cut-off date.

Elaboration

Moberly is located in north central Missouri, approximately 130 miles east of Kansas City and 150 miles west of St. Louis. In 1858, the Chariton and Randolph Company was granted a charter to build a railroad. The new line, which would intersect the North Missouri Railroad at an unspecified point in Randolph County, would run west to Brunswick, Missouri in Chariton County and then on north to Iowa.¹ Although the town of Allen, Missouri had a station on the North Missouri railroad a short distance from the proposed junction, the Chariton and Randolph Company decided that the most convenient site for the junction was located on William Roberts' land where it intersected

¹ James Goodrich and Lynn Wolf Gentzler, (eds.), Marking Missouri History. (Columbia: The State Historical Society of Missouri, 1998), p. 54.

United States Department of the Interior
National Park Service

National Register of Historic Places
Continuation Sheet

Section number 8 Page 12

Moberly Junior High School
Randolph County, Missouri

the North Missouri Railroad. Two years after obtaining a charter for the railroad line, the Company purchased forty acres from Roberts and agreed to establish a town at the intersection of the two railroads.² The new town, originally called Moberly Junction, was named for Col. William E. Moberly, the first president of the Chariton and Randolph Railroad Company.³

In 1861, to encourage the development of Moberly, the Chariton and Randolph Company "offered to all the residents of Allen who would move to the new site the same amount of land they owned and occupied in Allen."⁴ Patrick Lynch was the only Allen resident to accept the offer. He loaded his house onto long timbers and used a team of oxen to pull it to its new location, a lot at the current intersection of Reed and Clark Streets in Moberly. Lynch, his wife and their six children were the town's only inhabitants until after the Civil War.⁵

On September 27, 1866, the North Missouri Railroad, which had acquired the Chariton and Randolph Company in 1864, held a sale of lots, and the plat of the town was filed several weeks later. Although a number of lots were purchased, only a handful of houses were built in the year following the first sale of lots and the town had less than one hundred residents in 1865.⁶ However, after a second sale of lots in 1867, the town grew quickly. In 1868, the town of Moberly was incorporated and by 1870, had a population of 1,514.

In 1872, two events secured the future of Moberly. That year, a second railroad, the Missouri, Kansas and Texas, was granted a right of way through Moberly. Within a year, the MKT line from Moberly to Hannibal was in operation.⁷ Even more significant was the selection of Moberly by the North Missouri Railroad Company as the location for the Company's building and repair shops. The Moberly Board of Trustees had been courting the railroad for several years. The inducements offered by the town included more than 600 acres of land that was exempt from city taxes for twenty years, and the rights to an almost inexhaustible bed of coal on the land.⁸ The company soon developed a massive

2 "The Beginning Years," *Moberly Monitor-Index*. September 29, 2002, p. E2.

3 Ralph E. Gerhard, *Moberly and Its Railroads*. (Moberly, MO: Randolph County Historical Society), n.p.

4 Alexander H. Waller, *The History of Randolph County, Missouri*. (Topeka, KS and Cleveland, OH: Historical Publishing Co., 1920), p. 169.

5 "The Beginning Years," p. E2.

6 "The Beginning Years," p. E2.

7 Gerhard.

8 Waller, p. 173-174.

United States Department of the Interior
National Park Service
National Register of Historic Places
Continuation Sheet

Section number 8 Page 13

Moberly Junior High School
Randolph County, Missouri

complex, with six large new buildings, including a round house that was 300 feet in diameter, with stalls for sixty locomotives. Once developed, the complex offered employment for more than 1,200 people. As one source put it "Moberly became the wild prodigy of the railroad that put meat on the tables in the form of a payroll and materials purchased."⁹

The construction of the railroad shops in Moberly led to the town's development as one of the state's leading transportation centers. The same year that work began on the railroad shops, Moberly's main streets were graded, a well-equipped fire department was established, the Mechanic's Bank was organized, gas lighting was introduced, and the town's first schools opened.¹⁰ Moberly "grew so quickly in the post-Civil War years that it was called the "Magic City."¹¹ By 1880, the town had a population of 6,070.¹² Moberly's enormous growth and prosperity resulted in numerous public improvements and improved local amenities.¹³ The Missouri State Business Directory and Gazetteer published in 1894 described Moberly as:

An important, progressive city of 12,000 is situated on the St. Louis and Kansas City line and the North branch of the Wabash R.R. and on the Hannibal section of the M. K. & T in Sugar Creek township, Randolph County... The city is well built up, is lighted by electricity, has broad and well paved streets and avenues, a fine system of water works, excellent sewerage, a finely equipped fire department, 4 commodious public school buildings, parochial schools, a business college, 2 opera houses, first class hotels, 3 banks, lodges of the leading secret and benevolent societies, 2 foundries and machine shops, 2 large brick yards, 2 flour mills, a planing mill and the machine shops of the Wabash R. R.¹⁴

In addition to the extensive machine shop complex, the Wabash Railroad Company also

9 100th Anniversary History, Moberly, Missouri 1866-1966. (Moberly, MO: Moberly Centennial Association, 1966), p. 23.

10 Moberly Art Souvenir 1896. (Moberly, MO: Moberly Historical and Railroad Museum, reprint c.1976), n.p.

11 Dorothy Caldwell, Moberly: The "Magic City" of North Central Missouri. (Unpublished paper from the Moberly, MO vertical file at the State Historical Society of Missouri, no date), p. 5.

12 100th Anniversary History, Moberly, Missouri 1866-1966. p. 29.

13 Ibid, p. 31

14 Missouri State Business Directory and Gazetteer. (St. Louis: R. L. Polk & Co, 1894), p.

United States Department of the Interior
National Park Service
National Register of Historic Places
Continuation Sheet

Section number 8 Page 14

Moberly Junior High School
Randolph County, Missouri

erected two of the town's most impressive nineteenth century buildings. Union Station opened in 1889 and served as the passenger station for both the Wabash and the M. K. & T. and as the general offices of the Wabash Railway system west of the Mississippi. Two years later, the Wabash Moberly Hospital was completed. The 40-bed hospital treated all Wabash Railroad employees free of charge.¹⁵

The natural resources of Randolph County led to the establishment of two large industries in Moberly in the late nineteenth century. Beginning in the 1880s, the county's rich deposits of bituminous coal began to be mined for fuel and the shale deposits were used in brickmaking. After the turn of the twentieth century, Moberly became known as one of the largest producers of paver bricks in the state.

Moberly continued to grow in the early 1900s, but not at the exponential rate that it had in the late nineteenth century. However, the selection of the town in 1906 as the site of the first Brown Shoe Company factory outside of St. Louis served to further boost the local economy. The Brown Shoe Company, which employed more than 1,000 workers during its peak operation, operated into the 1950s. Although passenger train traffic decreased nationwide as automobiles proliferated after the turn of the twentieth century, railroad freight operations remained very strong, and the Wabash shops continued to be a strong element of Moberly's economy. In addition, the construction of Highway 63 through Moberly in the 1920s reinforced the town's status as an industrial center.

Two of Moberly's most successful local businesses began in the early decades of the twentieth century. In 1918, Temple Stevens took over his father's grocery store and began expanding to other towns. His father's grocery business soon became a chain of grocery stores. By 1948, the Temple Stevens Company had forty-seven stores. The Orscheln empire also began in Moberly in the 1920s. In 1921, brothers Al and William Orscheln started a shuttle service transporting patrons to and from the family's dance hall outside of Moberly. The brothers soon began hauling local products between Moberly and the surrounding towns, and soon the Orscheln Brothers Trucking Company had a fleet of delivery trucks. Several years later, Al Orscheln's patent on a new parking brake led to the establishment of the Orscheln Brake Lever Manufacturing Company. Throughout the twentieth century, the Orscheln Company continued to grow and diversify its operations, but it has remained a Moberly fixture.¹⁶

¹⁵ Moberly Art Souvenir 1896.

¹⁶ 100th Anniversary History, Moberly, Missouri 1866-1966. p. 90.

United States Department of the Interior
National Park Service

National Register of Historic Places
Continuation Sheet

Section number 8 Page 15

Moberly Junior High School
Randolph County, Missouri

In 1930, Moberly reached its peak population of 13,647.¹⁷ Although it remains a railroad town and it has several large industries, the town's economy and its population suffered in the late twentieth century. However, Moberly's proximity to the growing city of Columbia and its convenient location on Highway 63 should help it remain a viable town.

Public Education in Moberly

The Moberly Junior High School Building is locally significant under Criterion A in the area of EDUCATION as Moberly's first junior high school building and as one of the town's oldest extant public school buildings.

The public school system in Moberly began in 1872. For the first few years, the schoolrooms were located on the second floor of the Payne's Pharmacy Building in downtown Moberly. In 1875, the school board purchased several lots at the site of the current Junior High at the corner of Johnson and Rollins Streets and began construction on the town's first dedicated public school building, Central School.¹⁸ While the new school was being constructed, classes were held in a three-room frame house on East Rollins, which continued to be used for some elementary school classes after Central School opened.

Completed in 1877, the new central school building was a two and one-half story brick building with a basement. The imposing structure had two tall towers and a mansard roof. Classes for grades one through eight were held in rooms on the first and second floors and in the basement. Also in 1877, the high school was organized by the school system's first superintendent, Professor Marion Bigley. Those classes were conducted on the third floor of the new building. In 1880, Moberly celebrated its first high school graduation and established the town's first school for black students. The commencement ceremony for the first graduating class was held in a large building, known as the wigwam, constructed to accommodate the Democratic State Convention. A crowd of more than 3,000 people packed the building to celebrate the town's first two high school graduates.¹⁹

During the 1880s, Moberly's growth prompted the expansion of the school system. In 1882, a building on Myra Street, known as the Old Tate Hotel, was rented to serve as a

¹⁷ Ibid. p. 82

¹⁸ Ibid. p. 164.

¹⁹ "School Fire in January 1929 Loss Totals \$100,000," Moberly Monitor-Index, August 1, 1999, p. C1.

United States Department of the Interior
National Park Service

National Register of Historic Places
Continuation Sheet

Section number 8 Page 16

Moberly Junior High School
Randolph County, Missouri

third elementary school. That makeshift school was replaced by West Park School, which was built in 1885. The new school was described in a local history: "a brick building of 6 rooms extremely large halls with all class rooms heated by stoves."²⁰ A year later, East Park School replaced a three-room house on Morley Street which had been rented for elementary grade classes after the house on East Rollins burned. Built in 1886, East Park School was a 6-room brick building.²¹

Fires destroyed two of Moberly's public school buildings in the 1890s. In 1894, Old Central School, the town's largest school and the only one used for high school classes, burned. Town residents acted almost immediately to provide a replacement, as noted in a county history: "An issue of bonds was at once voted by the people to erect a new and up-to-date building on the same ground."²² The new school, which was also called Central School, was, like Old Central, a two and one-half story brick building with a basement. The new building was simpler in design, however, with yellow brick walls, a gable roof with dormer windows and just one large square tower. Just two years later, the first school for black students, on the corner of Bedford Street and Fisk Avenue, also burned. Its replacement was erected in a new location on the corner of Franklin and Horner Streets.

Moberly continued to increase in population and the town expanded in all directions in the late nineteenth and early twentieth century. In an effort to keep up with this growth, several new schools were constructed. The overcrowding at East Park School and Central School was relieved by the construction of a new elementary school on the south side of town in 1894. Like East Park and West Park, South Park School, was a two-story brick building with six rooms. North Park School, which opened in 1912, contained eight rooms on two floors. The opening of the Brown Shoe Factory in 1907 spurred expansion of the city to the southeast. Miller's Park Addition, a new development near the shoe factory, prompted the construction of the town's sixth elementary school, Southeast Park School in 1918.²³

The Moberly Board of Education also tried to cope with the growing student population by building additions on each of the older schools. West Park and East Park

²⁰ 100th Anniversary History, Moberly, Missouri 1866-1966, p. 165.

²¹ Ibid.

²² Waller, p. 182.

²³ 100th Anniversary History, Moberly, Missouri 1866-1966, p. 165.

United States Department of the Interior
National Park Service

National Register of Historic Places
Continuation Sheet

Section number 8 Page 17

Moberly Junior High School
Randolph County, Missouri

Schools received two-room additions in 1907 and 1910 respectively.²⁴ An auditorium and gymnasium addition constructed in 1917 nearly doubled the size of Central School. This addition, designed by Kansas City architect, William H. Sayler, and Moberly architect Ludwig Abt, provided space for additional activities, but did little to help the crowded classroom conditions.²⁵ An article written by a high school student and published in the 1913 Moberly High School yearbook described some of the problems with Central School. According to the author,

At present there are 300 students enrolled, which is twice as many as the building would normally accommodate. Rooms in the basement that should be used for other purposes are used for class rooms. There are not enough seats in the study hall. Three hundred students in four classrooms make it necessary for two to sit in one seat. This would be alright for the little Freshies, but when two Junior lads try to sit together in a seat two feet wide, they are in a humiliating perplexity.²⁶

The addition of a junior college program to the Moberly school curriculum in 1925 exacerbated this problem. Some of the junior college classes were held in rented spaces, but the Central School classrooms were also used by the Junior College students.²⁷

On January 29, 1929, a fire that started in the basement destroyed the main portion of Central School.²⁸ Although the loss of the school building was unfortunate, it did ultimately result in an improvement of the entire Moberly School System. An editorial entitled "A School Crisis," that appeared in the Moberly Monitor-Index the day after the fire, pointed out the school system's problems and the necessity for change.

Burning last night of the old Moberly High School building destroying the principal unit of an already pitifully inadequate school system puts Moberly squarely up against an emergency of the most urgent type.

²⁴ Waller, p. 182.

²⁵ Ludwig Abt Collection, Collection Number WUNP5916, Western Historical Manuscripts Collection, University of Missouri, Columbia, Missouri.

²⁶ "Moberly High School building was plain structure" Moberly Monitor-Index and Evening Democrat. September 25, 1991, p. 4F. (Originally published in the 1913 Moberly High School yearbook)

²⁷ 100th Anniversary History, Moberly, Missouri 1866-1966, p. 165.

²⁸ "School Fire Loss Totals \$100,000," Moberly Evening Democrat. January 30, 1929, p. 1.

United States Department of the Interior
National Park Service
National Register of Historic Places
Continuation Sheet

Section number 8 Page 18

Moberly Junior High School
Randolph County, Missouri

Students in the Junior College have been meeting in inconvenient rented quarters, tolerated only because they have been recognized as temporary. Ward schools are overcrowded and in need of replacement or extensive repairs. Now six hundred high school students are without a building large enough to accommodate them. There appeared to be doubt this morning whether even the unburned addition to the old building could be used at once due to damage to the heating system.

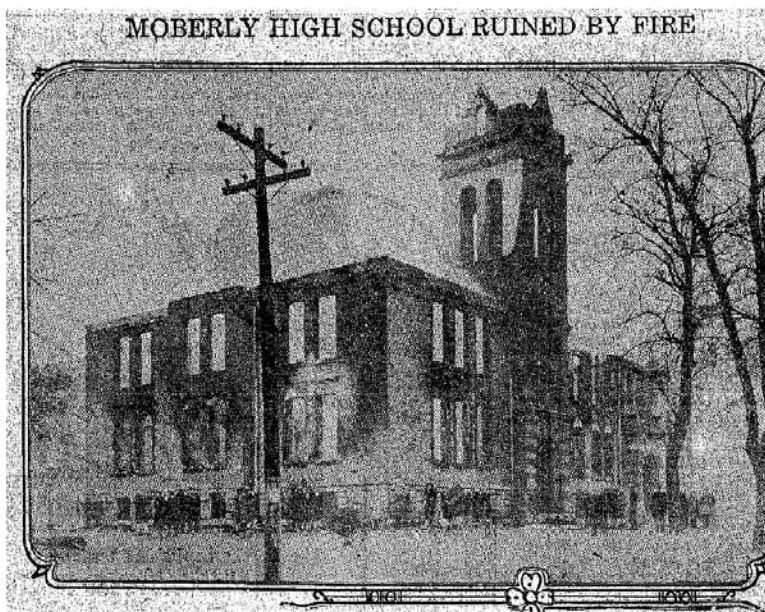
The Moberly board of education, a body of competent men, may be relied upon to provide temporary relief. But it should not stop at that.

What is needed is a comprehensive program of building, remodeling and expansion that will do away with cramped quarters from primary rooms to junior college. This means a bond issue of considerable size.

Last night's fire, we believe, will awaken the people to Moberly's education needs. The city is in good financial condition. Its residents, for the most part, are prosperous. They are in the mood for progress.

Now is the time to provide a school system that will be adequate. No makeshift plan will do.²⁹

Figure Four. Newspaper Clipping in the possession of the building owner. (February 6, 1929.)



²⁹ "A School Crisis," Moberly Monitor-Index. January 30, 1929.

United States Department of the Interior
National Park Service

National Register of Historic Places
Continuation Sheet

Section number 8 Page 19

Moberly Junior High School
Randolph County, Missouri

Apparently, the Moberly Board of Education was planning to reorganize the school system even before the fire at Central School. In April 1929, a report titled "A School Building Program for Moberly, Missouri" was published in the University of Missouri Bulletin Education Series. This report explained the results of a survey of Moberly's public school buildings, made recommendations for restructuring the Moberly public school system and proposed a comprehensive school building plan. A committee from the University of Missouri's Department of Education conducted the survey, and M. G. Neale authored the report. According to the report,

The committee recommends that the school program in Moberly be based on the type of educational organization which will provide,

1. Six year elementary schools.
2. A four year junior high school
3. A four year combination senior high school and junior college.³⁰

The committee cited several reasons for this new organizational structure in Moberly. The creation of a central junior high school would permit a wider variety of special classes to be offered than would be possible if the seventh, eighth, ninth and tenth grade students were spread out over several buildings throughout town. Since classes such as home economics, science and manual training require special equipment, space need not be allocated in the elementary schools for these activities if the older grades were located in their own building. In addition, the report noted that the grouping of grades seven through ten "is educationally desirable because it affords opportunities for dealing more effectively with the problems of early adolescence."³¹

A nationwide trend towards the utilization of a 6-3-3 plan for public school systems, consisting of six elementary grades, three junior high school grades and three high school grades also was cited as a basis for the committee's recommendations for Moberly. In the Eightieth Report of the Public Schools of the State of Missouri, School Year Ending June 30, 1929, Parts I, II, and III, Charles Lee, the Superintendent of Schools reported that

30 M. G. Neale, "A School Building Program for Moberly, Missouri," University of Missouri Bulletin, Education Series. Number 28, Volume 30, Number 16, Columbia, MO: University of Missouri, April 21, 1929, p. 34.

31 Ibid., p.33.

United States Department of the Interior
National Park Service

National Register of Historic Places
Continuation Sheet

Section number 8 Page 20

Moberly Junior High School
Randolph County, Missouri

The junior high school plan of organization is now generally accepted all over the United States. 'Today the six-three-three plan of organization has been put into effect in by far the greatest majority of our cities, and is being adopted by many town and county-unit school systems as well.' According to the U. S. Board of Education, there were 1100 junior high schools and 1149 junior high school departments in connection with senior high schools in 1926. The rapid growth of the movement continues.

In Missouri, thirty-four school districts, outside of St. Louis and Kansas City, are attempting some kind of junior high school organization, but not more than ten or twelve are real junior high schools.³²

The recommendation for the creation of a four-year junior high school in Moberly rather than a three-year junior high school, which was most common, was based on the increase in high school enrollment and the recent addition of the junior college curriculum.

According to the report, "the survey committee is very strongly of the opinion that the work of the junior college years should be intimately connected with that of the present senior high school"³³ This combination would permit the joint use of teachers, laboratory equipment and library facilities. Thus, the separation of elementary, junior high and high school students in Moberly would provide more space for the higher-grade students and would facilitate the combination of high school and junior college classes.

Based on the requirements of the new organizational structure and the building survey results presented in the Moberly School Building Plan, the committee recommended the construction of two new elementary schools to replace the dilapidated West Park and East Park schools, the addition of an auditorium/gymnasium to North Park School, the refurbishment of all of the existing elementary schools, the construction of a new junior high school for grades seven through nine on the site of the high school that burned, and the construction a new high school/junior college building.³⁴

On May 14, 1929, Moberly held a citywide election to decide whether or not to issue \$490,000 in bonds to fund the proposed school building plan. The measure passed

32 Chas. A. Lee, Eightieth Report of the Public Schools of the State of Missouri, School Year Ending June 30, 1929, Parts I, II, and III. (Jefferson City, MO: Missouri Department of Education, 1929), p. 117.

33 Neale, p. 33.

34 Ibid, pp. 35-36.

United States Department of the Interior
National Park Service

National Register of Historic Places
Continuation Sheet

Section number 8 Page 21

Moberly Junior High School
Randolph County, Missouri

by a 5-1 majority.³⁵ Local architect Ludwig Abt was chosen by the Moberly Board of Education to be the architect for the entire school building project. By the end of the summer, the board had accepted Abt's plans for the two new elementary schools and the new junior high school. However, when the bids were received for the three buildings, all of the contractor's bids were higher than expected.³⁶ As a result, construction was delayed while Abt made modifications to the plans to reduce the cost.

Kansas City-based Peterson Construction Company was awarded the contract for both West Park School and the Moberly Junior High School building. Construction on both buildings began in the fall of 1929. Both buildings were completed in time for the opening of the schools in the fall of 1930. On August 1, 1930, the school board inspected the new junior high school and the following description of the building appeared in the local newspaper.

The new building has 10 class rooms on the second floor and 8 on the first in addition to the superintendent's office, an activity and clinic room. The lower portions of the wall are made of glazed tile and steel lockers are used throughout the entire building. Halls are well lighted as are all rooms. A trophy case is also a feature of the downstairs. A girls' and a boys' lavatory have been built on each floor.

Only a small part of the basement has been set aside for classroom purposes, but one room here, the manual training room, is quite large and also contains sufficient locker space.

The old auditorium is also undergoing considerable repair. New plaster has been put on nearly all the walls, the stage cornice has been replaced and faulty boards in the floor are being removed and replaced.³⁷

Two weeks later, the paper reported that the two new elementary schools and the new junior high school were "practically ready for use now with final finishing touches making them more attractive daily."³⁸ Hundreds of Moberly citizens attended the open house, which was held for all three new schools on August 28, 1930. According to the

35 "School Bonds Carry by 5-1 Vote," Moberly Monitor-Index. May 15, 1929, p. 1.

36 "Lowest Bids on Schools Reach Total of \$299,281," Moberly Monitor-Index. September 10, 1929, p. 1.

37 "Work on Schools Moving Rapidly," Moberly Monitor-Index. August 1, 1930, p. 1.

38 "Schools Will Open on Sept. 1," Moberly Monitor-Index. August 13, 1930, p. 1.

United States Department of the Interior
National Park Service

National Register of Historic Places
Continuation Sheet

Section number 8 Page 22

Moberly Junior High School
Randolph County, Missouri

article in the local paper the following day "some said they almost had to pinch themselves to make believe they were in Moberly, the new schools are so delightfully different from the old."³⁹ However, delays in the start of construction on the new combination high school and junior college building forced the school board to announce that for the fall term the eighth grade students would have to go back to the elementary schools, the high school students would use the new junior high school building and the junior college students would continue to attend classes in the rented space above the Piggly Wiggly store.⁴⁰ This arrangement actually continued throughout the 1930-31 school year. The new high school/junior college was completed in March 1931, and the new organizational structure of the Moberly school system was implemented the following fall.⁴¹ For the first time, Moberly officially had a junior high school.

Less than a decade after the building was completed, the Moberly Junior High School Building was refurbished. In 1934, PWA funds were used to upgrade finishes and make minor repairs. Ludwig Abt supervised the work, which included repairs to the plaster walls and ceilings and new flooring throughout the building. The plans also called for all of the student lockers to be bolted to the walls. A new floor, stage and basketball goal were also installed in the auditorium/gymnasium.⁴² In 1950, the Moberly Junior High School was renovated again. This project, designed by the offices of noted St. Louis school architect, William B. Ittner, included the installation of new steel windows and the remodeling of part of the ground floor to include a dining hall, kitchen and recreation room.⁴³ Abt apparently had some connection to that project as well, as the drawings are part of his papers, which are file with Western Historical Manuscripts in Columbia, MO.

In 1994, a new junior high school building was constructed in Moberly. The new school housed seventh and eighth grade classes and the original Moberly Junior High School, which became known as the Moberly Middle School, was used for sixth grade classes. The same year the new junior high was completed, a survey of the public schools in Moberly conducted by a School Survey Team from the College of Education, Department of Educational Administration at the University of Missouri-Columbia

39 "Hundreds Visit New Schools," Moberly Monitor-Index. August 29, 1930, p. 1.

40 "Schools Will Open on Sept. 1," Moberly Monitor-Index. August 13, 1930, p. 1.

41 "Tentative Approval to College," Moberly Evening Democrat. March 6, 1931, p. 1.

42 PWA Project #1514F Plans, 1939, Ludwig Abt Collection, Collection Number WUNP5916, Western Historical Manuscripts Collection, University of Missouri, Columbia, Missouri.

43 Moberly Junior High School Renovation Plans, 1950, Ludwig Abt Collection, Collection Number WUNP5916, Western Historical Manuscripts Collection, University of Missouri, Columbia, Missouri.

United States Department of the Interior
National Park Service

National Register of Historic Places
Continuation Sheet

Section number 8 Page 23

Moberly Junior High School
Randolph County, Missouri

recommended that the Moberly Junior High School, be decommissioned as a school. According to the report,

Expansion and renovation of this building are not recommended as desirable or cost effective options. Consideration should be given to relocating students presently housed in this building. It is recommended that the building undergo minor repairs and serve as office space for the central office, school psychologists, Chapter I coordinators, and/or serve as a storage facility.⁴⁴

In 1997, the Moberly School District discontinued use of the original Junior High School Building and the new building's name was changed to Moberly Middle School. Four years later, the original Moberly Junior High School was sold to Taking Chances, LLC. HFM Partnership, LC acquired the building in December 2005 and is currently making plans to rehabilitate the building and convert it to a low-income housing complex.⁴⁵ Former students of the school may someday soon have the opportunity to return as residents.

Architectural Significance

The Moberly Junior High School Building is locally significant under Criterion C in the area of ARCHITECTURE. The building is a significant example of the work of noted Moberly architect, Ludwig Abt, and a relatively rare example of Art Deco design in Moberly.

Ludwig Abt was born in Hoechst A-M., Germany on March 6, 1882. He was educated at the *Technicum Hildburghausen* in Thurigen, Germany. At the age of twenty, Abt immigrated to the United States and began his career in the construction industry. Between 1902 and 1911, he "was employed in Architectural offices in Galveston and Dallas, Tex., New York City, St. Louis, Chicago, Akron, Kansas City and San Jose and San Francisco, Calif., as a craftsman, estimator, superintendent and engineer."⁴⁶ His obituary, which appeared in the January 25, 1967 issue of Mid-West Contractor, noted that he was

44 School Survey Team, College of Education, Department of Educational Administration, University of Missouri, School Survey of Moberly School District, 1994. Columbia, MO: University of Missouri, 1994.

45 General Warranty Deed between Taking Chances, LLC, Robbie Rainer and HFM Partnership, LC, November 30, 2005.

46 "Ludwig Abt Dies; Noted Architect," Moberly Monitor-Index. January 12, 1967, pp. 1-2.

United States Department of the Interior
National Park Service
National Register of Historic Places
Continuation Sheet

Section number 8 Page 24

Moberly Junior High School
Randolph County, Missouri

probably the only architect in the Midwest involved in the rebuilding of San Francisco after the 1906 earthquake.⁴⁷

In 1911, Abt and his new wife moved to Moberly, where he opened his own architectural office.⁴⁸ Abt's role as the second or assistant architect, working with William H. Sayler of Kansas City, on the gymnasium/auditorium wing, which was added to the Central School building in 1916, undoubtedly proved his abilities to the Moberly Board of Education and to the city of Moberly.⁴⁹ Two years later, Abt was chosen to design Moberly's sixth elementary school, Southeast Park School. In 1929, when the Board of Education embarked on a school building plan, Abt was selected as the architect for all of the new school buildings. Between 1929 and 1931, four new schools designed by Abt were erected in Moberly. Three of those are extant today, East Park School, West Park School, and the Moberly Junior High School.

In addition to the schools he built for the Board of Education, Ludwig Abt designed many of Moberly's largest buildings, including churches, hospitals governmental offices, private schools, a theatre, and commercial storefronts. One of his most acclaimed buildings is the Moberly Municipal Auditorium. This Art Deco style building, built in 1939, was funded by the Works Project Administration.⁵⁰ Although he is most widely recognized for his public building designs, Abt also designed dozens of Moberly residences. He designed his own house, located at 1 Holman Road in Moberly, in the "Bavarian style."⁵¹

In an article titled "Milestones and Stumbling Blocks, Continued," author Howard Marshall praised Abt's versatility and talent. He wrote that,

Abt's work includes the Fourth Street Theatre with San Simeon-like grandeur; the brick public grade schools that embodied the town's progressive spirit, the noble and perhaps ennobling Classical-style Moberly Junior College; the Art-Deco Municipal Auditorium and his last major contracts, those for the Moberly

47 "Obituaries," *Mid-West Contractor*. Vol. 1128, January 25, 1967, p. 60.

48 "Ludwig Abt Dies; Noted Architect," *Moberly Monitor-Index*. January 12, 1967, pp. 1-2.

49 Moberly High School Gymnasium/Auditorium Addition Plans, 1916, Ludwig Abt Collection, Collection Number WUNP5916, Western Historical Manuscripts Collection, University of Missouri, Columbia, Missouri.

50 Howard Marshall, "Milestones and Stumbling Blocks, Continued," *Journal of Cultural Geography*. Vol. 15, No. 1, Fall/Winter, 1994, p. 54.

51 "Ludwig Abt Dies; Noted Architect," *Moberly Monitor-Index*. January 12, 1967, pp. 1-2.

United States Department of the Interior
National Park Service

National Register of Historic Places
Continuation Sheet

Section number 8 Page 25

Moberly Junior High School
Randolph County, Missouri

Housing Authority, the National Guard Armory, the Federal Building and the new Catholic School.⁵²

Abt-designed buildings can also be found in numerous towns throughout central and northern Missouri. According to the list of blueprints in the Ludwig Abt collection at the Western Historical Manuscripts Collection, Abt designed public school buildings in more than twenty towns in outstate Missouri.⁵³

Ludwig Abt had a long, productive career, and was quite a prolific architect. From



1911 to 1952, he had his own architectural firm in Moberly. In 1952, he entered into a partnership with architect, Jay K. Cleavinger, who still lives in the area. Although Abt is not well known outside of Moberly, his contribution to Missouri architecture is significant.

Abt's design for the Moberly Junior High School building utilizes elements of what was then the new style known as Art Deco. The term Art Deco is derived from the name of the 1925 Paris *Exposition des Arts Decoratifs et Industriels Modernes*, an exhibition of decorative arts and architecture predominately

⁵² Marshall, p. 54.

⁵³ Ludwig Abt Collection, Collection Number WUNP5916, Western Historical Manuscripts Collection, University of Missouri, Columbia, Missouri.

United States Department of the Interior
National Park Service

National Register of Historic Places
Continuation Sheet

Section number 8 Page 26

Moberly Junior High School
Randolph County, Missouri

by European artists. American artists and architects as well as department store buyers and industrial designers attended the exposition and returned to the United States infused with new ideas and eager to incorporate those ideas into their own designs. "Promotional literature for the 'Expo Deco' stated that 'reproductions, imitations, and counterfeits of ancient styles will be strictly prohibited.'⁵⁴ Emphasis on the future rather than the past and the use of ornament to promote a sentiment of modernity were the Art Deco style's principal characteristics. Abt's choice of Art Deco styling for the Moberly Junior High School may have reflected the school board's desire to project a sophisticated image that was in sync with the newly reorganized school system.

Art Deco was as much a system of ornament as an architectural style, and Deco motifs were applied to everything from buildings to toasters. There were common themes in the ornament; one source noted that "Art Deco ornamentation consists largely of low-relief geometrical designs, often in the form of parallel straight lines, zigzags, chevrons and stylized floral motifs."⁵⁵ Another common theme in American examples was the use of Mayan, Aztec and Native American elements. A description of Art Deco buildings in particular noted an emphasis on verticality, as well as the common use of "square or oblong blocks and other rectangular projections composed symmetrically around entrances."⁵⁶

Many of those elements can be found on the Moberly Junior High, particularly around the two main public entrances and in the ornamental stone insets used on the south and east elevations. The composition and ornament of the east entrance tower in particular represent a clear expression of Art Deco design. The hipped roof, stepped sides, and strong lines of the piers give the entrance tower a decidedly vertical composition, and the ornamental stone pieces around and above the entrance are typical of Art Deco buildings of the time. The allegorical elves above the doorway have a Mayan feel, and many of the ornamental blocks feature stylized plant forms. The south entrance also has some Deco detailing, albeit in a more restrained application.

The fact that the styling of the Junior High building is as simple as it is have resulted from the changes to the design to satisfy budget constraints, or Abt may have

54 Poppeliers et al, *What Style Is It: A Guide to American Architecture*, (New York: Preservation Press and John Wiley & Sons, Inc., 1983), p. 88.

55 Ibid, p. 88.

56 Marcus Whiffen, *American Architecture Since 1780: A Guide to the Styles*, (Cambridge and London: MIT Press, 1996), p. 235.

United States Department of the Interior
National Park Service

National Register of Historic Places
Continuation Sheet

Section number 8 Page 27

Moberly Junior High School
Randolph County, Missouri

elected to limit the amount of Art Deco detailing in an effort to better blend it with the older part of the building. He may also have wanted to introduce the new architectural style in Moberly without having it rejected as too new and different.

This was not his only Art Deco building, however, or even his only school in the style. West Park Elementary School, which was built during the same building program as the Junior High, is still extant and also has Art Deco detailing. Like the Junior High School Building, West Park has a central tower with a stepped roofline and it has stone detailing. The stone accents on West Park are much plainer than the Junior High, and more closely patterned after Native American art. West Park ceased to be used as a school in the late 1990s and was subsequently sold to an individual. The other two schools designed by Abt as part of the 1930 building program are also extant, but they feature more traditional Colonial Revival styling. Although these other Abt-designed schools in Moberly are still in use and are likely eligible for National Register listing, the Moberly Junior High School, with its 1917 gymnasium/auditorium section, stands out as the oldest school building in Moberly.

Figure Four. West Park School, Moberly.



United States Department of the Interior
National Park Service

National Register of Historic Places
Continuation Sheet

Section number 8 Page 28

Moberly Junior High School
Randolph County, Missouri

The Moberly Junior High School building is one of Moberly's oldest historic school buildings of any type, and the first building in the community to ever serve as a Junior High School. It is the largest of the Moberly school buildings designed by Abt for the 1929-30 building campaign, and one of the best examples of Art Deco styling in that group. The school is highly intact, inside and out, and it clearly reflects its strong link to public education in Moberly, Missouri.



United States Department of the Interior
National Park Service
National Register of Historic Places
Continuation Sheet

Section number 9 Page 29

Moberly Junior High School
Randolph County, Missouri

SOURCES

100th Anniversary History, Moberly, Missouri 1866-1966. Moberly, MO: Moberly Centennial Association, 1966.

“A School Crisis,” Moberly Monitor-Index, January 30, 1929.

General Warranty Deed, Taking Chances, LLC, Robbie Rainer, grantor and HFM Partnership, LC, grantee, November 30, 2005. (On file with the property owner.)

Goodrich, James and Lynn Wolf Gentzler, (eds.). Marking Missouri History. Columbia: The State Historical Society of Missouri, 1998.

“Hundreds Visit New Schools,” Moberly Monitor-Index. August 29, 1930, p. 1.

Lee, Chas. A. Eightieth Report of the Public Schools of the State of Missouri, School Year Ending June 30, 1929, Parts I, II, and III. Jefferson City, MO: Missouri Department of Education, 1929.

“Lowest Bids on Schools Reach Total of \$299,281,” Moberly Monitor-Index. September 10, 1929, p. 1.

Ludwig Abt Collection, Collection Number WUNP5916, Western Historical Manuscripts Collection, University of Missouri, Columbia, Missouri.

“Ludwig Abt Dies; Noted Architect,” Moberly Monitor-Index. January 12, 1967, pp. 1-2.

Marshall, Howard. “Milestones and Stumbling Blocks, Continued,” Journal of Cultural Geography. Vol 15, No. 1, Fall/Winter, 1994, pp. 45-58.

McAlester, Virginia and Lee. A Field Guide to American Houses. New York: Alfred A. Knopf, 1984.

Moberly Art Souvenir 1896. Moberly, MO: Moberly Historical and Railroad Museum, reprint c.1976.

Neale, M. G. “A School Building Program for Moberly, Missouri,” University of Missouri Bulletin, Education Series, Number 28, Volume 30, Number 16, Columbia, MO: University of Missouri, April 21, 1929, pp 1-54.

“Obituaries,” Mid-West Contractor. Vol. 1128, January 25, 1967, p. 60.

United States Department of the Interior
National Park Service
National Register of Historic Places
Continuation Sheet

Section number 9 Page 30

Moberly Junior High School
Randolph County, Missouri

Poppeliers, John C., et al. What Style Is It: A Guide to American Architecture. New York: Preservation Press and John Wiley & Sons, Inc., 1983.

Rifkind, Carole. A Field Guide to American Architecture. New York and Ontario: New American Library, 1980.

“School Bonds Carry by 5-1 Vote,” Moberly Monitor-Index. May 15, 1929, p. 1.

“School Fire in January 1929 Loss Totals \$100,000,” Moberly Monitor-Index. August 1, 1929.

“School Fire Loss Totals \$100,000,” Moberly Evening Democrat. January 30, 1929, p. 1.

School Survey Team, College of Education, Department of Educational Administration, University of Missouri, School Survey of Moberly School District, 1994. Columbia, MO: University of Missouri, 1994.

“Schools Will Open on Sept. 1,” Moberly Monitor-Index. August 13, 1930, p. 1.

“Tentative Approval to College,” Moberly Evening Democrat. March 6, 1931, p. 1.

“The Beginning Years,” Moberly Monitor-Index. September 29, 2002, p. E2.

Waller, Alexander H. History of Randolph County, Missouri. Topeka, KS and Cleveland, OH: Historical Publishing Company, 1920.

Whiffen, Marcus. American Architecture Since 1780: A Guide to the Styles. Cambridge and London: MIT Press, 1996.

“Work on Schools Moving Rapidly,” Moberly Monitor-Index. August 1, 1930, p. 1.

Workers of the Writers' Program of the Works Projects Administration in Missouri, Missouri: The W.P.A. Guide to the Show-Me State. St. Louis: Reprint by the Missouri Historical Society Press, 1998. (Original, Missouri State Highway Department, 1941).

United States Department of the Interior
National Park Service

National Register of Historic Places
Continuation Sheet

Section number 10, photographs Page 31

Moberly Junior High School
Randolph County, Missouri

Verbal Boundary Description

Lots One (1), Two (2), Three (3), Four (4), Five (5), Six (6), Seven (7), Eight (8), Nine (9), Ten (10), Eleven (11), Twelve (12), Thirteen (13), Fourteen (14), and Fifteen (15) all in Block Three (3), Tannehill's First Addition to Moberly, Randolph County, Missouri. Except, starting at the Northwest corner of the intersection of Johnson and Rollins Streets; thence North along said West line of Johnson Street to a concrete marker on the line between the Tannehill Park property and the school property; thence West 15 feet; thence South to the North line of Rollins Street; thence East along the North line of Rollins Street to place of beginning. (Recorded in Book 624, P 561, Randolph County Recorder's Office, Huntsville, MO.)

Boundary Justification

The current boundaries encompass all of the land currently and historically associated with the school.

Photographs

The following information is the same for all photographs:

Moberly Junior High School
101 North Johnson Street, Moberly
Randolph County, MO
Debbie Sheals
May, 2007

List of Photographs

See photo keys for description of camera angle.

1. Façade, from Johnson Street
2. Detail, east entrance
3. Southeast corner
4. South elevation, front section
5. Detail, south entrance
6. Gym entrance and connector
7. Southwest corner (rear of gymnasium)
8. Northwest corner
9. North elevation, front section
10. Northeast corner
11. South corridor, first floor
12. Classroom, second floor
13. Classroom, second floor
14. North corridor, second floor
15. Gymnasium, east end.
16. Staircase, Basement level, south end

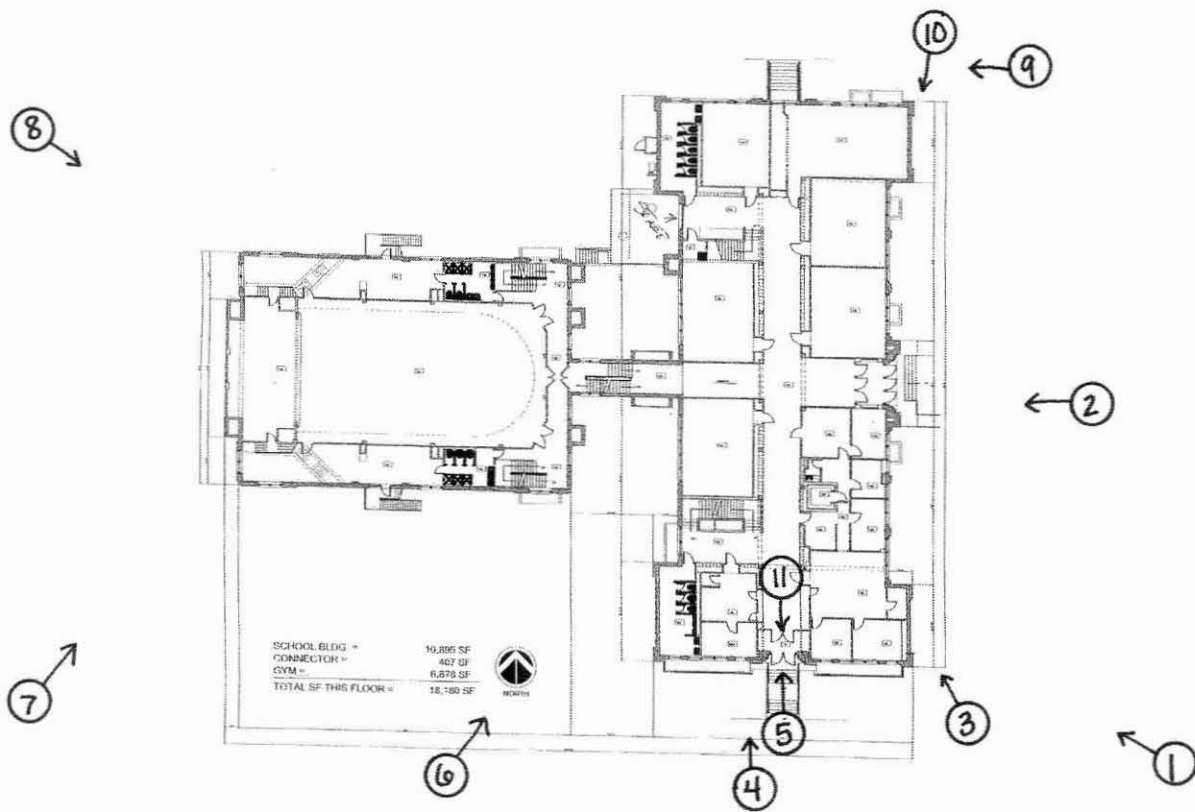
United States Department of the Interior
National Park Service
National Register of Historic Places
Continuation Sheet

Section number photographs Page 32

Moberly Junior High School
Randolph County, Missouri

Photo Key 1: Exterior and First Floor.

Base plan by Central Design Group, Columbia, MO



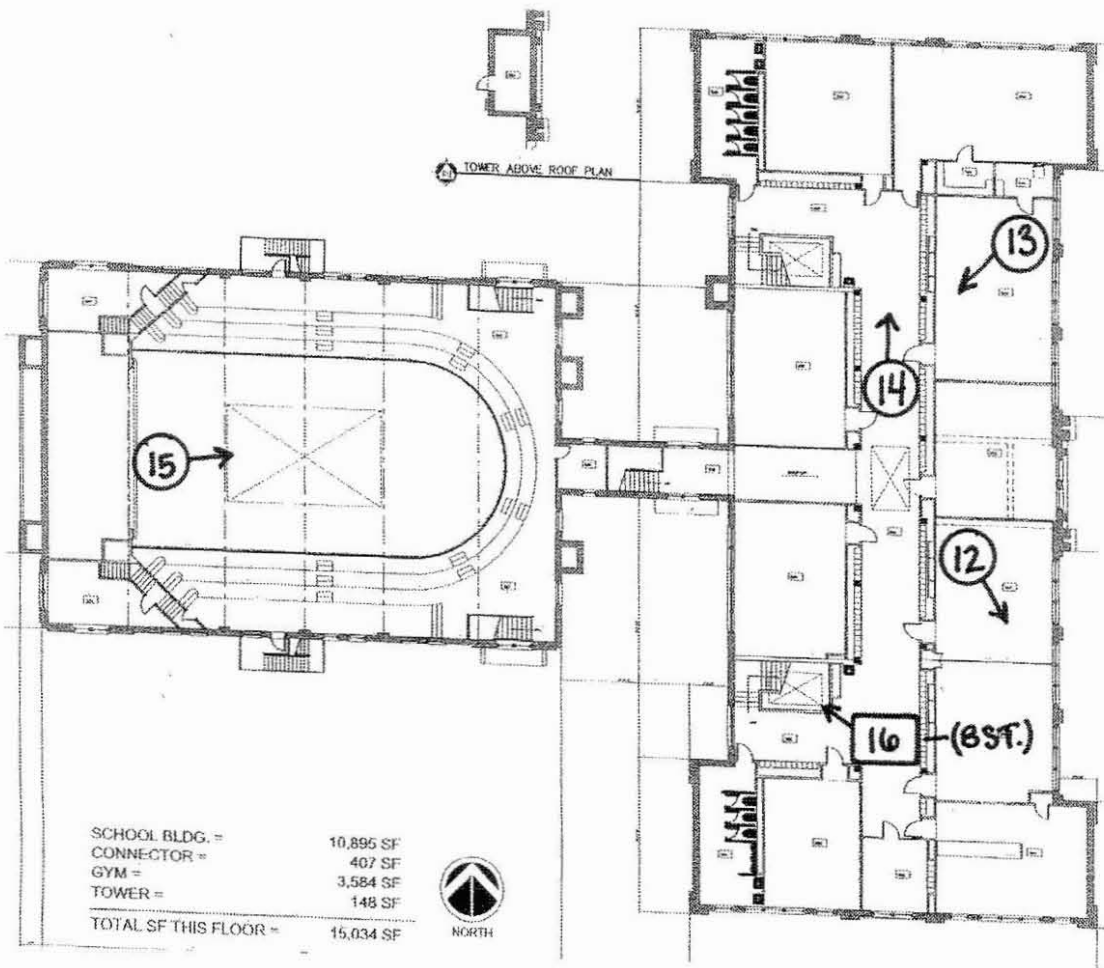
United States Department of the Interior
National Park Service
National Register of Historic Places
Continuation Sheet

Section number photographs Page 33

Moberly Junior High School
Randolph County, Missouri

Photo Key 2: Second Floor and Basement.

Base plan by Central Design Group, Columbia, MO











THOMPSON
ROLLINS

STOP















EXIT

Sam's
choice







EXIT

22



