

United States Department of the Interior
National Park Service

NATIONAL REGISTER OF HISTORIC PLACES
REGISTRATION FORM

=====

1. Name of Property

=====

historic name: Miller Building

other name/site number: N/A

=====

2. Location

=====

street & number: 2 East Franklin Street

not for publication: N/A

city/town: Liberty

vicinity: N/A

state: MO

county: Clay

code: 047

zip code: 64068

=====

3. Classification

=====

Ownership of Property: Private

Category of Property: Building

Number of Resources within Property:

Contributing	Noncontributing	
<u>1</u>	_____	buildings
_____	_____	sites
_____	_____	structures
_____	_____	objects
<u>1</u>	<u>0</u>	Total

Number of contributing resources previously listed in the National Register: 0

Name of related multiple property listing: "Historic Resources of Liberty, Clay County, Missouri"

=====

7. Description

=====

Architectural Classification:

Late Victorian
Other: Early Commercial Block

Other Description: _____

Materials: foundation Brick roof Asphalt
walls Brick other Cast Iron
Stucco

Describe present and historic physical appearance. X See continuation sheet.

=====

8. Statement of Significance

=====

Certifying official has considered the significance of this property in relation to other properties: Local.

Applicable National Register Criteria: A, C

Criteria Considerations (Exceptions) : N/A

Areas of Significance: Commerce
Architecture

Period(s) of Significance: 1868 - 1942

Significant Dates : 1868

Significant Person(s): N/A

Cultural Affiliation: N/A

Architect/Builder: Unknown

State significance of property, and justify criteria, criteria considerations, and areas and periods of significance noted above.
X See continuation sheet.

=====

9. Major Bibliographical References

=====

See continuation sheet.

Previous documentation on file (NPS):

- preliminary determination of individual listing (36 CFR 67) has been requested.
- previously listed in the National Register
- previously determined eligible by the National Register
- designated a National Historic Landmark
- recorded by Historic American Buildings Survey # _____
- recorded by Historic American Engineering Record # _____

Primary Location of Additional Data:

- State historic preservation office
- Other state agency
- Federal agency
- Local government
- University
- Other -- Specify Repository: Clay County Archives (Liberty, MO)

=====

10. Geographical Data

=====

Acreage of Property: Less than one acre

UTM References: Zone Easting Northing Zone Easting Northing

A	<u>15</u>	<u>377470</u>	<u>4344950</u>	B	___	___	___
C	___	___	___	D	___	___	___

___ See continuation sheet.

Verbal Boundary Description: See continuation sheet.

Boundary Justification: See continuation sheet.

=====

11. Form Prepared By

=====

Name/Title: Deon K. Wolfenbarger

Organization: Three Gables Preservation Date: _____

Street & Number: 9550 NE Cookingham Drive Telephone: 816/792-1275

City or Town: Kansas City State: MO ZIP: 64068

United States Department of the Interior
National Park Service

NATIONAL REGISTER OF HISTORIC PLACES
CONTINUATION SHEET

Section number 7

Miller Building

Page 1

SUMMARY: The Miller Building is located at 2 East Franklin in Liberty, Clay County, Missouri. The building was constructed in 1868, and features many Victorian commercial details on a Two-Part Commercial Block property type, as defined in the Multiple Property Submission "Historic Resources of Liberty, Clay County, Missouri". It is on the northeast corner of the intersection of North Main and East Franklin streets. It is a two-story, rectangular brick building with a flat roof. The Victorian features found on the building include the decorative brick cornice line, hooded window surrounds, and an intact storefront with cast-iron columns. Not only does the Miller Building retain its integrity of location, setting, and association, but the rare (for Liberty) unaltered storefront constitutes a high degree of integrity in design, materials, workmanship, and feeling as well.

ELABORATION: The Miller Building was constructed in 1868 by "Uncle Bob" Miller, and remains today virtually unaltered from that period. It is on the northeast corner of North Main and East Franklin streets, and after escaping a fire on the block in the 1950's, remains one of the few intact historic structures on the north side of the square. Its design features are typical of the earlier Victorian embellishments added to the Two-Part Commercial Block property type. The brick exterior has been painted with a slightly textured paint, but the original cladding remains clear.

The front (south) facade is divided into three bays. The nearly unaltered storefront features four cast iron columns spaced evenly across the front. The slender central columns frame a centrally located recessed entry, while wider columns enframe the building's edges. The door is wood framed with fifteen glass lights. The transom area immediately above the doorway has been closed, and the uppermost transom has two fixed pane windows covered with metal bars. The side windows in the recessed entry have a panelled wood bulkhead, display windows, and glass transoms above. Flanking the recessed entry are two large display windows with wood panelled bulkheads below. The signboard area above has been closed down.

The second story of the front facade has three equally spaced tall, narrow windows. These wood windows are six-over-six, double-hung sash, with projecting sills and molded triangular pediments above. Immediately above the windows are recessed rectangular panels in the brick. The west elevation, which is five bays long, has identical fenestration surrounds. The first story has two openings on the north end, one of which has been

United States Department of the Interior
National Park Service

NATIONAL REGISTER OF HISTORIC PLACES
CONTINUATION SHEET

Section number 7

Miller Building

Page 2

=====

closed down. Iron steps lead to a central door on the second story, which is flanked by two windows identical to those on the front facade. A decorative cornice band is the same on both the west and south elevations. It consists of a wide band punctuated by an arched, corbelled brick pattern, and topped with a dentil pattern of bricks.

The Miller Building is now occupied by an antique business on the ground floor and basement level. To accomodate the new business and increase usable floor space, the owners have removed all interior wall partitions on the ground floor. In addition, plaster was removed from the east and west walls, revealing the raw brick finish. Non-historic acoustical tile panels now cover the ceiling.

The upstairs continues to be used for residential purposes. The two apartments were remodelled in 1991. In both units, the exterior plaster walls were stripped to brick and a clear breathable finish was applied.

United States Department of the Interior
National Park Service

NATIONAL REGISTER OF HISTORIC PLACES
CONTINUATION SHEET

Section number 8 Miller Building

Page 1

SUMMARY: The Miller Building is significant under Criterion A in the area of COMMERCE, and under Criterion C in the area of ARCHITECTURE. In the area of COMMERCE, it is representative of the commercial expansion and growth in Liberty after the Civil War through the 1930's. It is the second oldest commercial building on the square and has housed a number of enterprises vital to the economic health of Liberty over the years. In the area of ARCHITECTURE, it is a virtually unaltered example of the early Two-Part Commercial Block property type (see MPS "Historic Resources of Liberty, Clay County, Missouri"). Not only does it retain the typical cornice line elaboration and second story fenestration patterns, it has one of the few sets of cast iron columns left on Liberty's square.

ELABORATION: The Miller Building was constructed by "Uncle Bob" Miller in 1868, and remains today as the oldest example of a Two-Part Commercial Block property type, which were built after the Civil War in Liberty. Although not as elaborate as some of the Two-Part Commercial Block buildings constructed in Liberty later during the 1880's, it nonetheless represents a departure from the restrained, classically influenced style of architecture which was predominate prior to the Civil War (see 104 East Franklin). The division of the facade into two distinct zones is also typical of this form of commercial building, new to Liberty at its time of construction.

The Miller Building is also representative of a typical commercial building on the square, which housed a variety of businesses throughout its long years of service. A closer examination of the types of enterprises and their length of residency, however, reveals the overall basic stability of commerce in Liberty. This is typical of the economics of business located on the square in Liberty (see historic context "The Courthouse Square in Liberty: Commercial and Governmental Center of Clay County, 1858-1942", in the MPS "Historic Resources of Liberty, Clay County, Missouri") Two of the businesses housed at 2 East Franklin were there for nearly half a century each.

Robert Hugh Miller came to Liberty in 1846, and founded that same year the Liberty Tribune. He remained as editor until 1886, and for many years used the second story as his office (Portrait and Biographical Records, 1893; Liberty Tribune, 16 September 1937). At the time of its founding, it was one of the few newspapers west of the Mississippi River which was regularly published. (DAR, 1922). However, the Miller Building was used primarily for commercial purposes. Shortly after it was built, Nathaus's

United States Department of the Interior
National Park Service

NATIONAL REGISTER OF HISTORIC PLACES
CONTINUATION SHEET

Section number 8

Miller Building

Page 2

=====
clothing store opened there, and remained through 1883 (Sanborn Map, 1883). This business was followed by a hardware store owned by John Lincoln (Liberty Tribune, 16 September 1937).

In 1894, a boots and shoe store occupied the building. It was vacant for a short period right around the turn of the century, but was soon occupied by a grocery store (Sanborn Maps, 1894, 1899, 1906). L.T. Dorsett's Grocery was located at 2 East Franklin for many years. Dorsett started his business in Liberty in 1879, and conducted a grocery store which also handled Queensware and glassware (Woodson, 1920).

In addition to the commercial enterprises housed in the first floor, the Masonic Lodge used the second story between 1870 and 1886 (Liberty Tribune, 10 February 1955). After that period, the second floor was used for offices (Sanborn Maps, 1889, 1894). Bernard Fightmaster bought the building from Dorsett in 1937 (Liberty Tribune, 16 September 1937), and the Fightmaster Plumbing Company remained in the building for several decades.

United States Department of the Interior
National Park Service

NATIONAL REGISTER OF HISTORIC PLACES
CONTINUATION SHEET

Section number 9

Miller Building

Page 1

BIBLIOGRAPHY

Alexander Doniphan Chapter, D.A.R. Clay County Missouri Centennial Souvenir, 1822-1922. Liberty, MO.: Liberty Tribune, 1922.

Jackson, Don M., and Wymore, Jack B. The Heritage of Liberty. Liberty, MO.: R.C. Printing Services, 1976.

Liberty Tribune. 16 September 1937, 10 February 1955.

Portrait and Biographical Records: Clay, Ray, Carroll, Linn Counties. 1893.

Sanborn Map for Liberty, Clay County, Missouri. New York: Sanborn Map Company, 1883, 1889, 1894, 1899, 1906, 1913.

Woodson, W.H. History of Clay County, Missouri. Topeka: Historical Publishing Company, 1920.

United States Department of the Interior
National Park Service

NATIONAL REGISTER OF HISTORIC PLACES
CONTINUATION SHEET

Section number 10

Miller Building

Page 1

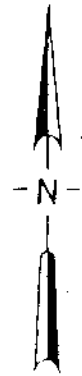
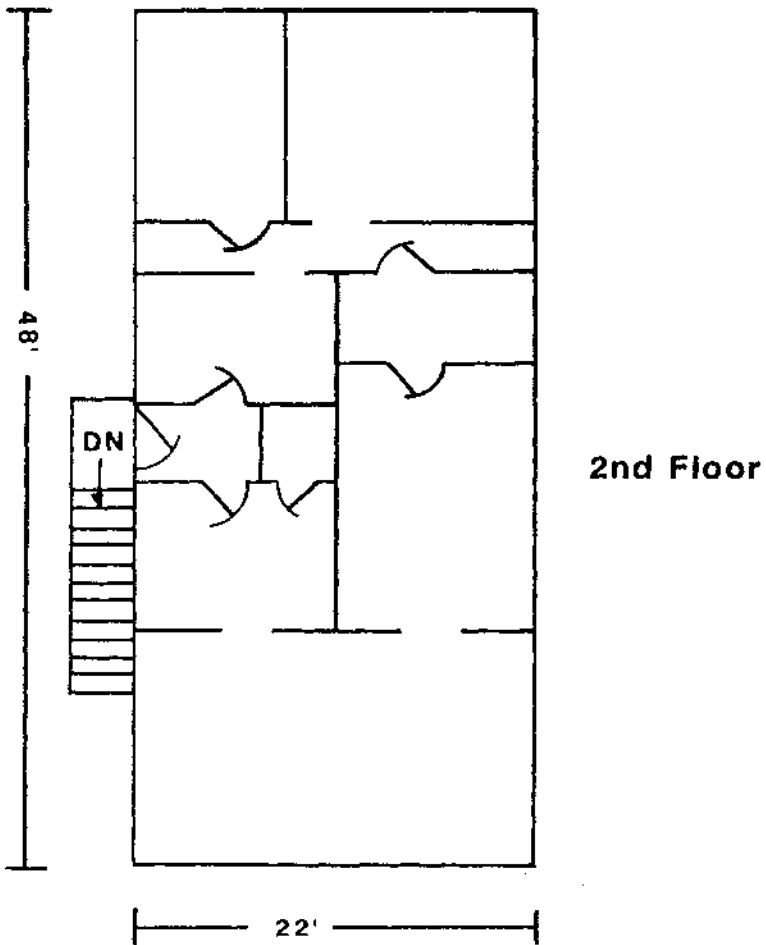
Verbal Boundary Description:

The west 22' feet of the south 101' feet of Lot 83, Original Town of Liberty, more particularly described as follows: Beginning at the northeast corner of the intersection of East Franklin and North Main streets, proceed north 101' along the right-of-way of North Main; then proceed east 22'; then proceed east 22'; then proceed south 101'; then proceed west 22' along the right-of-way of East Franklin to the point of beginning.

Verbal Boundary Justification:

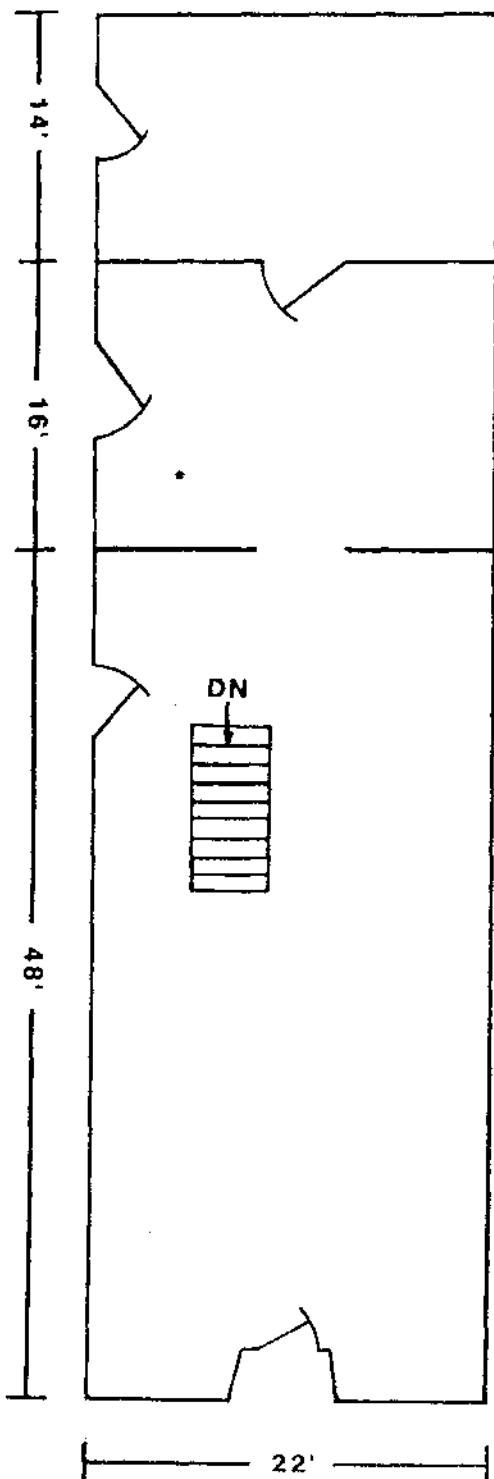
The boundary includes all that portion of the city lot which has historically been associated with the property.

MILLER BUILDING

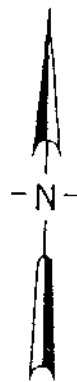


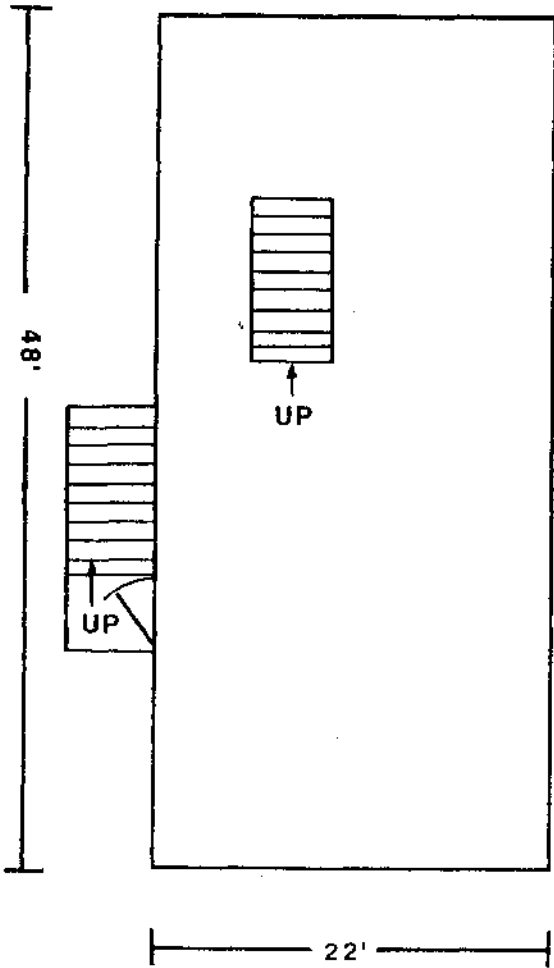
Liberty, Clay County, Missouri

Scale: $\frac{3}{32}'' = 1'$
(approx)

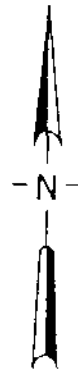


1st Floor





Basement



United States Department of the Interior
National Park Service

NATIONAL REGISTER OF HISTORIC PLACES
CONTINUATION SHEET

Section number Photographs Miller Building Page 1
=====

The following information is the same for all photographs listed below:

LOCATION OF SITE: Miller Building at 2 East Franklin Street, Liberty, MO
NAME OF PHOTOGRAPHER: Bob Askren
DATE OF PHOTOGRAPH: 19 December 1991
LOCATION OF NEGATIVE: State Historic Preservation Office, Jefferson City, MO

List of Photographs

1. Southwest elevation of building, showing exterior metal staircase.
2. South elevation.
3. Main (south) entry, showing detail of applied historic signage on glass sidelight.
4. Interior of building, looking north towards the back (from just inside the front door).

LIBERTY QUADRANGLE
MISSOURI
7.5 MINUTE SERIES (TOPOGRAPHIC)



212 E. FRANKLIN ST.
LIBERTY, CLAY COUNTY, MISSOURI
0567584/0894481

SOUTH LIBERTY COURTHOUSE SQUARE HISTORIC DISTRICT
2 S. MAIN ST., 10 E. KANSAS ST., 1-17 E. KANSAS ST.
LIBERTY, CLAY COUNTY, MISSOURI
018484/0844481

510 950

550 950

EXCELSIOR SPRINGS 1.4 MI
0.2 MI TO U.S. BYP 71 (KEARNEY SW)

25' 2.2 MI. TO U.S. 69
RICHMOND 31 MI
EXCELSIOR SPRINGS 13 MI

716 950
(KEARNEY)

595 950

950

LIBERTY DISTRICT

LIBERTY DISTRICT

510 950

595 950

950

LIBERTY DISTRICT

LIBERTY DISTRICT

510 950

595 950

950

LIBERTY DISTRICT

LIBERTY DISTRICT

510 950

595 950

950

LIBERTY DISTRICT

LIBERTY DISTRICT

510 950

595 950

950

LIBERTY DISTRICT

LIBERTY DISTRICT

510 950

595 950

950

LIBERTY DISTRICT

LIBERTY DISTRICT

510 950

595 950

950

LIBERTY DISTRICT

LIBERTY DISTRICT

510 950

595 950

950

LIBERTY DISTRICT

LIBERTY DISTRICT

510 950

595 950

950

LIBERTY DISTRICT

LIBERTY DISTRICT

510 950

595 950

950

LIBERTY DISTRICT

LIBERTY DISTRICT

510 950

595 950

950

LIBERTY DISTRICT

LIBERTY DISTRICT

510 950

595 950

950

LIBERTY DISTRICT

LIBERTY DISTRICT

510 950

595 950

950

LIBERTY DISTRICT

LIBERTY DISTRICT

510 950

595 950

950

LIBERTY DISTRICT

LIBERTY DISTRICT

510 950

595 950

950

LIBERTY DISTRICT

LIBERTY DISTRICT

510 950

595 950

950

LIBERTY DISTRICT

LIBERTY DISTRICT

510 950

595 950

950

LIBERTY DISTRICT

LIBERTY DISTRICT

510 950

595 950

950

LIBERTY DISTRICT

LIBERTY DISTRICT

510 950

595 950

950

LIBERTY DISTRICT

LIBERTY DISTRICT

510 950

595 950

950

LIBERTY DISTRICT

LIBERTY DISTRICT

510 950

595 950

950

LIBERTY DISTRICT

LIBERTY DISTRICT

510 950

595 950

950

LIBERTY DISTRICT

LIBERTY DISTRICT

510 950

595 950

950

LIBERTY DISTRICT

LIBERTY DISTRICT

510 950

595 950

950

LIBERTY DISTRICT

LIBERTY DISTRICT

510 950

595 950

950

LIBERTY DISTRICT

LIBERTY DISTRICT

510 950

595 950

950

LIBERTY DISTRICT

LIBERTY DISTRICT

510 950

595 950

950

LIBERTY DISTRICT

LIBERTY DISTRICT

510 950

595 950

950

LIBERTY DISTRICT

LIBERTY DISTRICT

510 950

595 950

950

LIBERTY DISTRICT

LIBERTY DISTRICT

510 950

595 950

950

LIBERTY DISTRICT

LIBERTY DISTRICT

510 950

595 950

950

LIBERTY DISTRICT

LIBERTY DISTRICT

510 950

595 950

950

LIBERTY DISTRICT

LIBERTY DISTRICT

510 950

595 950

950

LIBERTY DISTRICT

LIBERTY DISTRICT

510 950

595 950

950

LIBERTY DISTRICT

LIBERTY DISTRICT

510 950

595 950

950

LIBERTY DISTRICT

LIBERTY DISTRICT

510 950

595 950

950

LIBERTY DISTRICT

LIBERTY DISTRICT

510 950

595 950

950

LIBERTY DISTRICT

LIBERTY DISTRICT

510 950

595 950

950

LIBERTY DISTRICT

LIBERTY DISTRICT

510 950

595 950

950

LIBERTY DISTRICT

LIBERTY DISTRICT

510 950

595 950

950

LIBERTY DISTRICT

LIBERTY DISTRICT

510 950

595 950

950

LIBERTY DISTRICT

LIBERTY DISTRICT

510 950

595 950

950

LIBERTY DISTRICT

LIBERTY DISTRICT

510 950

595 950

950

LIBERTY DISTRICT

LIBERTY DISTRICT

510 950

595 950

950

LIBERTY DISTRICT

LIBERTY DISTRICT

510 950

595 950

950

LIBERTY DISTRICT

LIBERTY DISTRICT

510 950

595 950

950

LIBERTY DISTRICT

LIBERTY DISTRICT

510 950

595 950

950

LIBERTY DISTRICT

LIBERTY DISTRICT

510 950

595 950

950

LIBERTY DISTRICT

LIBERTY DISTRICT

510 950

595 950

950

LIBERTY DISTRICT

LIBERTY DISTRICT

510 950

595 950

950

LIBERTY DISTRICT

LIBERTY DISTRICT

510 950

595 950

950

LIBERTY DISTRICT

LIBERTY DISTRICT

510 950

595 950

950

LIBERTY DISTRICT

LIBERTY DISTRICT

510 950

595 950

950

LIBERTY DISTRICT

LIBERTY DISTRICT

510 950

595 950

950

LIBERTY DISTRICT

LIBERTY DISTRICT

510 950

595 950

950

LIBERTY DISTRICT

LIBERTY DISTRICT

510 950

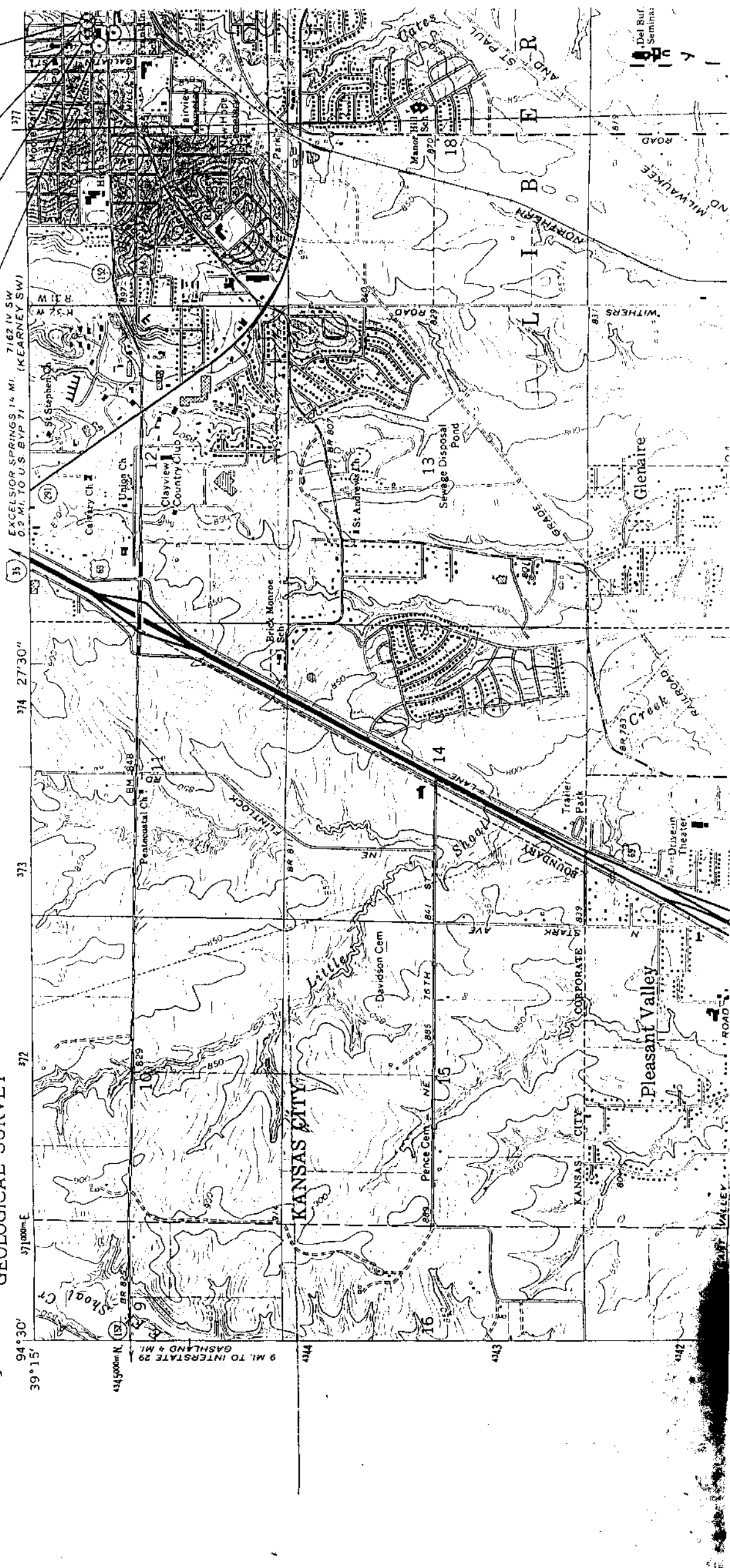
59

SEE LIBRARY CLIPPING
LIBRARY CLIPPING
DATE 10/22/50

MILLER BUILDING 2 E CORVILLIN ST
LIBERTY, CLAY COUNTY, MISSOURI
UTM 15 185470 4844950

1547 1 BELLEVILLE COURTHOUSE SQUARE HISTORIC DISTRICT
12-16 N MAIN ST, LIBERTY, CLAY COUNTY, MISSOURI
UTM 15 185470 4844885

UNITED STATES
DEPARTMENT OF THE INTERIOR
GEOLOGICAL SURVEY



7062 / SE
(WASHUA)

94° 30'
39° 15'

371000m E

372

373

374 27'30"

EXCELSIOR SPRINGS 1.4 MI. 7162 IV SW
0.2 MI. TO U.S. B.V.P. 71 (KEARNEY SW)

377

431500m N
9 MI. TO INTERSTATE 29
GASLAND 4 MI.

13

10

372

373

374 27'30"

377

16

15

14

13

12

18

443

444

445

446

447

448

449

450

451

452

453

454

455

456

457

458

459

460

461

462

463

464

465

466

467

468

469

470

471

472

473

474

475

476

477

478

479

480

481

482

483

484

485

486

487

488

489

490

491

492

493

494

495

496

497

498

499

500

501

502

503

504

505

506

507

508

509

510

511

512

513

514

515

516

517

518

519

520

521

522

523

524

525

526

527

528

529

530

531

532

533

534

535

536

537

538

539

540

541

542

543

544

545

546

547

548

549

550

551

552

553

554

555

556

557

558

559

560

561

562

563

564

565

566

567

568

569

570

571

572

573

574

575

576

577

578

579

580

581

582

583

584

585

586

587

588

589

590

591

592

593

594

595

596

597

598

599

600

601

602

603

604

605

606

607

608

609

610

611

612

613

614

615

616

617

618

619

620

621

622

623

624

625

626

627

628

629

630

631

632

633

634

635

636

637

638

639

640

641

642

643

644

645

646

647

648

649

650

651

652

653

654

655

656

657

658

659

660

661

662

663

664

665

666

667

668

669

670

671

672

673

674

675

676

677

678

679

680

681

682

683

684

685

686

687

688

689

690

691

692

693

694

695

696

697

698

699

700

701

702

703

704

705

706

707

708

709

710

711

712

713

714

715

716

717







BUSINESS HOURS
MON - FRI 10:00 - 5:00
SAT 10:00 - 4:00
SUN 12:00 - 4:00

ANTIQUES

ANTIQUE MARKET

Antiques

