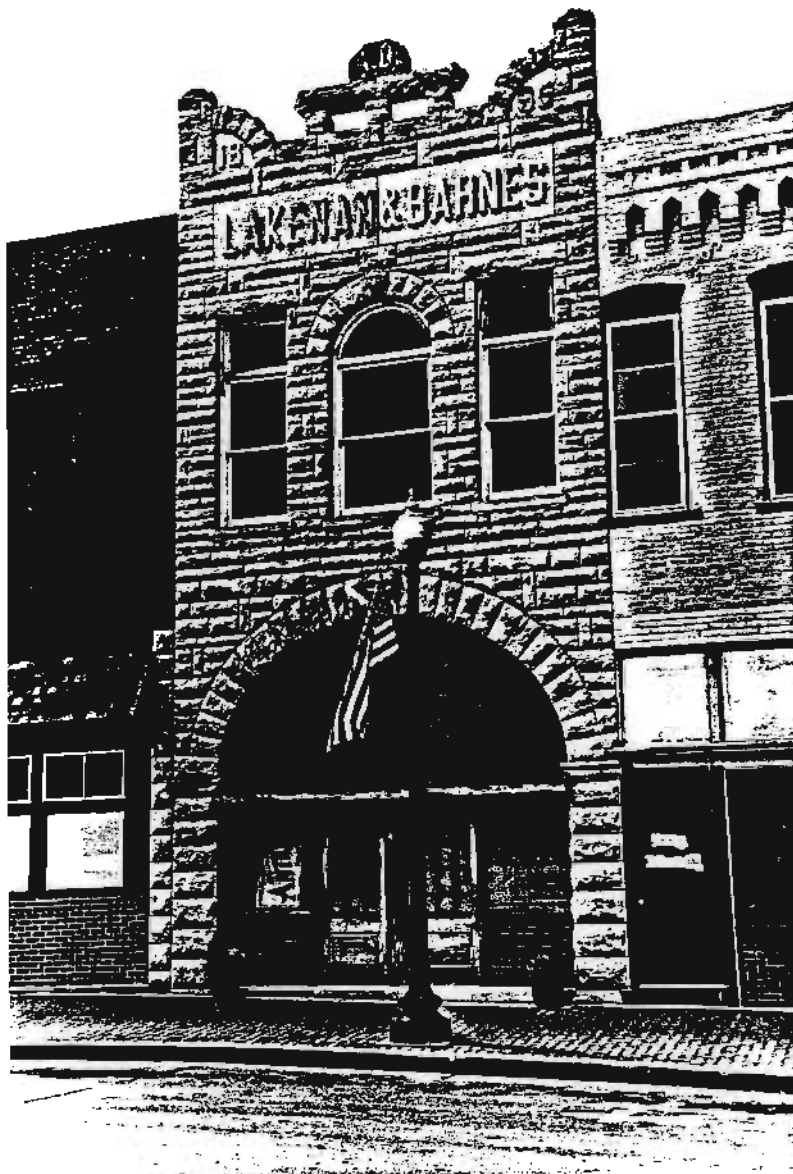


**Cultural Resource Survey
Final Report**

**Central Business District
Mexico, Missouri**



**Prepared for
The City Mexico
HPF Grant #29-01-16425-534**

**by
Mary Aue Mitchell**

September 25, 2002

Table of Contents

	Page
Introduction	1
Objectives and Methodology	1
History of Mexico, Missouri	2
Architectural and Historical Assessment of Surveyed Resources	5
Recommendations	6
Recommendations for Further Surveys	7
End Notes	7
Bibliography	8
Appendix A	11
Appendix B	12
Appendix C	11

Introduction

The cultural survey of Downtown Mexico, Missouri was conducted from September 2001 to September 2002. Historic preservation consultant Mary Aue Mitchell was the contractor. This survey project was funded by the City of Mexico and by a grant from the Historic Preservation Fund administered by the Historic Preservation Program of the Missouri Department of Natural Resources in Jefferson City, Missouri.

The author would like to acknowledge the assistance of the people of Mexico and especially that of Lura Williams, Leta Hodge, and George Craddock.

Objectives and Methodology

The objectives of this survey were to identify and evaluate resources in the commercial area of downtown Mexico, Missouri for potential eligibility for listing in the National Register of Historic Places. The criteria for this was the National Register criteria. For example, that the properties were fifty years old or older and retain their integrity. The properties in the survey area were inventoried and evaluated regarding integrity and their relation to the significance of the downtown area. Areas of significance included architecture, commerce and politics/government.

The survey area was to be limited to a ten-block area surrounding the Audrain County Courthouse with an extension to include an additional block to the east. This area has the highest concentration of commercial buildings and contains the highest concentration of historic commercial buildings. It is the historic center of town as well as the political and commercial center. The area is as follows: Beginning at the intersection of the point of the centerlines of Coal Street and Love Street, proceed west along the center line of Love Street to the intersection of the centerlines of Love Street and Clark Street, thence South along the center line of Clark Street to the point of intersection with the centerline of Promenade Street, thence east long the centerline of Promenade Street to the point of intersection with the centerline of Coal Street, thence north along the centerline of Coal Street to the point of intersection of the centerline of Coal Street and Love Street to the point of beginning. An additional block between Monroe and Jackson bordered by Olive Street to the east is also included in the hope of increasing the percentage of historic buildings in the survey area. The surveyor also included three buildings on the south side of the 100 block of West Promenade. These three appear to contribute to the district and could logically be included if the city chooses to pursue a National Register Nomination for the central business district.

The original proposal for the survey was to survey 82 properties: the final number of buildings for which survey sheets were completed was 93. Of the 93 buildings surveyed, 92 appear to be more than 50 years old or older. Some of them, however, have been

altered to the extent that the original building is no longer recognizable and they appear to have been built much more recently.

The archival research focused on preparation of historical contexts for the time period in which the survey area was developed, identification of construction dates and original use of the properties. The consultant used archival and research collections of the Mexico-Audrain County Library, Audrain County Historical Society and Museum, Missouri State Archives, and State Historical Society of Missouri. Primary sources included maps, atlases, city directories, telephone directories, photographs and the Sanborn Fire Insurance Company maps from the years 1885, 1890, 1894, 1908, 1914, 1926, and 1934. Secondary sources included histories written during different periods of the community's development such as Audrain Centennial History by Schooley in 1937, History of Audrain County Missouri, An Update 1936-1986 in 1986 by Audrain County Historical Society, Reflections of the Past by Messer 1999, and A Gathering of Our Days in 1997 by Hodge, as well as recollections of long-time residents of the city.

The field survey component included field inspection of each building in the survey area to confirm building materials, in particular wall treatment and foundation materials. The consultant relied on this information as well as photographs in developing written descriptions of each property.

History of Mexico, Missouri

The survey area has been the heart of Mexico since Missouri officially organized the county of Audrain on December 17, 1836, with Mexico named the county seat. The city was incorporated on February 7, 1857. At that time Mexico was consisted of four dusty "streets", a few log dwellings, and a population of a "handful." It was more than ten years before the town grew significantly¹.

The Courthouse Square and surrounding streets were laid out in accordance with the "Shelbyville Square Plan" used by many Missouri counties after the 1820s and with which communities attempted to avoid unplanned development. Mexico was first platted into one large grid of twenty-five blocks comprising the Original Town. The street names reflected the settlers' democratic leanings. They were named after presidents Washington, Jefferson, Monroe, and Jackson.² None of the earliest buildings survive, but the majority in the survey area were built prior to 1950, and the Sanborn Fire Insurance Company maps indicate many were built prior to 1885. By the mid 1800's Mexico was becoming a city in every sense of the word. On the square, wooden shanties had given way to brick buildings and existing buildings were being remodeled.³

Transportation was a problem in early Mexico. Unlike many towns, it was not founded on a major river. It was not until the 1850's that the first railroad, the North Missouri Railroad came through the town. This made it much easier for farmers and merchants to transport their goods both in and out of town. Mexico was now being called a "transportation hub" and developed into a marketing center for a large area.⁴

The second railroad to reach Mexico was the Louisiana and Missouri River Railroad in 1871. By 1885 there were eight trains going east and eight going west as well as two trains on the Jefferson City branch each day.⁵ By the late 1930's Alton Burlington trains ran between St. Louis and Kansas City.⁶ In his study of growth and development of central Missouri towns, Voss noted that main rail lines encouraged growth while branch lines usually drained resources.⁷ Mexico had both.

Mexico's steady rail traffic gave rise to the development of several good hotels during the late 1800's and early 1900's. The Ringo, the Hoxsey, the Windsor, the Jefferson, and the Planter's all provided lodging for travelers.⁸ Of these, only the Jefferson Hotel still stands. The Ringo, considered to be the most elegant, burned in 1918. For many years its lot on the southeast corner of the square remained vacant, and the hole where its basement had been filled with water that froze over in the winter providing local children with an skating rink.

In the late 1940's the need for passenger trains began to decline and other means of transportation improved. There were more and better roads and airplanes became more reliable. Regular passenger train service ended in 1969.⁹

In the late 1800's hay was the major crop in Audrain County. Audrain County leads Missouri in production of oats and soybeans and ranks in the first 15 in corn.¹⁰ Audrain County agriculture suffered the economic depression along with the rest of the nation, but in 1942 farm prices rose 25% with beef sales up and hog prices at \$14.90, which was the highest in ten years. World War II created other problems for Audrain County farmers. Rabbit producers could no longer ship live rabbits because of congested rail traffic. The army announced it was no longer using mules thereby decreasing the demand for Missouri mules. The war also meant there was a shortage of manpower to do field work.¹¹

The first Audrain County fair was held in Mexico in 1860. It was discontinued during the Civil War but was reorganized in 1866 and again in 1880 when it moved from the end of East Monroe Street to a larger site at the end of West Boulevard. From 1880 to 1916 the county had an annual fair.¹² The fairs brought additional business to Mexico and its central business district as well as occasional complaints from the citizens concerned about dust and crowds. The major purpose of fairs was to improve agriculture and domestic arts by offering prizes for winning exhibits¹³. At first, farm produce was stressed with less emphasis upon livestock, but gradually horses began to dominate the Fair. Eventually, the Fair owed much of its success to the county's excellent saddle horses. Horse enthusiasts came from far and wide to see such horses as Rex McDonald, considered to be the best saddle horses in the Nation in the mid 1890's. With Rex McDonald sired and trained there, Mexico came to be called the "Saddle Horse Capital of the World."¹⁴

Although agriculture was a major source of wealth for Audrain County and Mexico in the late 1800's, the discovery and development of fire clay brought widespread prosperity after 1910. The significance of fire clay lay in its ability to withstand high temperatures

without deteriorating or changing form. Brick made from fire clay were used in building industrial furnaces that were essential to the production of iron, steel, copper, aluminum, glass, cement, and castings.¹⁵ Although the Mexico Brick and Fire Clay Company was formed in 1903 by J.A. Glandon and several Mexico businessmen, it was not until 1910 that it was sold to a young engineer named A.P. Green that the business started to come into its own. Green introduced big improvements such as open-pit mining and the dry press manufacturing process. In 1915 he incorporated as the A. P. Green Fire Brick Company and by 1937 it had become the world's largest fireclay plant.¹⁶

The success of the Fire Brick Company was a great asset for Mexico and the county by not only providing jobs but well paying jobs and increasing the flow of dollars across the area. Mexico residents gradually enjoyed a higher standard of living. Other fire brick companies were formed and increased the county's importance as a production leader. In 1930 the Mexico Refractories Company was organized by J.B. Arthur who had worked for Green and became a leading competitor. Mexico was called the "Fire Brick Capital of the World."¹⁷

Weathering the Depression, the local fire brick industry expanded and diversified by playing a major role in World War II where Green's company alone employed more than four thousand workers. As the nation entered the space age, refractories continued to be an important industry and adapted to the new demands. It should be noted that it was with great local concern that the last fire brick refractory in Mexico closed in the spring of 2002.

As Mexico grew, education became a concern for its citizens. In the 1840's there were subscription schools of varying quality and duration.¹⁸ Schools were closed during the Civil War but reopened in the late 1860's. The town's first public school was built in 1873.¹⁹ By the spring of 1882, a full four year high school was in operation on the third floor of the Mexico Public School.²⁰

The city of Mexico once had a college. Hardin College, established in 1873, was considered among the top female schools in the Midwest. It was established with an \$80,000 endowment from former Missouri Governor Charles H. Hardin. The school prospered for some time and served more than 5,000 students before it closed in 1931 because of severe financial problems.²¹

One notable private school that still exists is the Missouri Military Academy. It was founded in 1889 by Col. A.F. Fleet with the backing of \$15,000 pledged by Mexico residents and is a boys' boarding school for fourth through the twelfth grade.²² It has survived fires as well as major reorganizations and continues to maintain its rank as an outstanding military school with emphasis upon discipline and scholastic achievement²³.

Architectural and historical assessment of surveyed resources

Most of the buildings are two-stories in height, although there are a few single and three story buildings. Brick is the main building material, but a few used stone. The most common details are corbelling and dentals. The majority of the buildings in the survey area are commercial vernacular. Several buildings display affinities of the Romanesque and Italianate styles typical of commercial buildings of the period and two, the Courthouse and the Coca Cola Building, are Art Deco in style.

Map A shows the contributing properties in the survey area. There appear to be two potential Historic Districts in Mexico as shown in Map B. They are separated by the block on the east side of the square because both ends of the block are non contributing. The building, Rite Way to Rent, on the north side of the block was originally three stories and has been altered several times. It is doubtful that the building could become contributing. The building, Jefferson Street Dry Goods, on the south side of the block could potentially be contributing to a district if its metal siding was removed. If it was contributing, the next four buildings north of it could also be included in the proposed historic district.

Several of the properties appear to be individually eligible for listing in the National Register of Historic Places. The Mexico Ledger Building, 201 West Monroe, was built in 1876 when Robert White bought the 21 year old newspaper. From a weekly paper with less than 1000 circulation, it grew to a six days per week publication. The newspaper continued to grow and was move to a new specially constructed building one block north of the square in 1956. The Ledger Building then became part of Erdel's Hardware. The buliding has remained unaltered with the exception of the boarded up transoms which still exist underneath. It should be noted that the current Mexico Ledger Building will be 50 years old in 2006 and may be eligible for listing in the National Register of Historic Places as well.

The Coca Cola Building, 221 North Jefferson, was built in 1935. After being used for bottling until the 1970's, it was then used for storage. The current owner bought it in 1978 and uses it as a gift shop and for office supplies. The only exterior alterations are lowering the windows and placing decorative wooden panels above them. It is an excellent example of Art Deco style.

The Audrain County Memorial Courthouse, in the center of the courthouse square, was built in 1951. This has been the third courthouse built on this spot. The first was built in 1839, and the second was completed in 1868. After over eighty years, the 1868 courthouse was considered too small and a fire hazard. The current courthouse is an excellent example of Art Deco style. The building's only exterior change is a handicap ramp at the south entrance. It dominates the square and is the center of county government.

The Mexico Audrain County Library, 305 West Jackson, was built as a post office in 1912. In 1967 it was aquired by the Audrain County library system and was remodeled on the inside. The outside still shows it to be an excellent example of the Beau-Arts style.

The Carnegie Library, 305 West Jackson, was built by funds donated by the Carnegie foundation in 1914. Its original location was 314 North Washington. In 1967, it was acquired by the Mexico Ledger newspaper and used for storage as well as a television studio. In 1991 it was moved to its current location and a walkway was constructed to connect it to the former Mexico Audrain County Library building. This building is largely unaltered and has classical influence. It was determined eligible for listing in the National Register of Historic Places in 1988.

The First Christian Church of Mexico, 307 West Jackson, is one of the oldest congregations in town, being established in the 1840's. The current building was built in 1905 with classical influence and is the third built by the congregation. An education center was added in 1953 and is the only major change to the building. The church is best known for presenting the Living Nativity each Christmas. Church members become actors portraying the nativity for thirty minute intervals. This has been a tradition for forty-five years.²⁴

The Mexico Savings Bank, 100 West Jackson, now the Mexico Area Chamber of Commerce, was built in 1935 on a portion of the site where the Ringo Hotel once stood. This became the Chamber of Commerce in 1996. The exterior of the building is unaltered except that the clock on the northeast corner of the building is missing. The interior of the building is unaltered with the exception of the northwest corner being partitioned off for the director's office. Public restrooms were also included where the safety deposit boxes used to be. The vault is used for the Vault Gallery which houses different displays of works of art. This building has federal influenced style.

Another property worthy of individual mention is A Stitch In Time, 104 South Jefferson. The building was adjacent to a building that collapsed in 1999. The Stitch In Time building needed some repair and it was decided to restore it to the original form as much as possible. The drop ceiling was removed, exposing the pressed metal original and the display windows were restored to their original appearance.

Pilcher's Jewelry has been a part of the Mexico business community since it was established in 1868 by Mark Pilcher. It has been located in several different buildings but has been at its current location at 102 South Jefferson Street since 1974. The building was built circa 1880 but gutted by fire in 1913 and is essentially unaltered externally. Internally, it still has the original, to circa 1913, tile floor, cash register, and safe. The jewelry cases are trimmed with polished hardwood, adding to the feeling of historic elegance.

Recommendations

Mexico, Missouri has an interesting history and many virtually intact historic resources that deserve to be preserved. The downtown area retains a significant concentration of historic buildings to support two historic districts. Designation as a National Register District would give the recognition to the area as well as make the buildings eligible for

historic preservation tax credits. Many of the buildings need repair and the 1999 collapse of one of the buildings on South Jefferson Street is still fresh in the minds of the local building owners.

In addition to the districts recommended, there are three buildings outside of the districts that are judged individually eligible. These are the First Christian Church, the Carnegie Library and the Post Office. These are all located on West Jackson Street and are shown on Map B.

Recommendations for Further Surveys

There are ample opportunities for further historic surveys in Mexico, Missouri. Two important themes to pursue would be properties associated with saddle horses and those associated with the brick refractories, particularly the A. P. Green Refractory. At one time there were several stables for raising and training saddle horses and two brick refractories. These were two of the driving forces in Mexico's economy at one time.

There are also many stately and interesting houses in Mexico. Graceland, the only property in Mexico currently listed on the National Register of Historic Places, is only one example of the resources to be found. A survey of the private residences could prove useful to individuals seeking to list any other homes.

¹ Leta Hodge, A Gathering of Our Days (Columbia, MO: Pebble Publishing, 1997), p.21, 33.

² Hodge, p. 33.

³ Phillip & Co. Remodels, Mexico Intelligencer, September 10, 1885, p. 6.

⁴ Hodge, p. 51-52.

⁵ Daily Railroad Schedule, Mexico Intelligencer, September 24, 1885, p. 1.

⁶ Gayle Messer, Audrain County, Missouri, Reflections of the Past, 1945-2000: A Pictorial History (Virginia Beach, VA: Donning Company, 1999), p. 113.

⁷ Stuart F. Voss, "Town Growth in Central Missouri, 1815-1880: An Urban Chapparral, Part 1," Missouri Historical Review 64 (October 1969): p. 65.

⁸ Max Thomson, ed. The Pictorial History of Mexico, 1880-1959: Saddle Horse and Fire Clay Capital of the World, (Marceline, MO, Heritage House Publishing for Mexico Ledger and Audrain County Historical Society), p. 81.

⁹ Messer p. 114.

¹⁰ Herschel Schooley, Centennial History of Audrain County, (Mexico MO, McIntyre Publishing Company, 1937), p. 29.

¹¹ Audrain County Historical Society, History of Audrain County Missouri: An Update, 1936-1986. (Mexico MO, Audrain County Historical Society, 1986), p. 21.

¹² Hodge, p. 115.

¹³ Fred Kniffen, "The American Agricultural Fair: The Pattern," Annals of the Association of American Geographers 39 (December 1949): 265.

¹⁴ Hodge, p. 116-119.

¹⁵ *Ibid.*, p. 145.

¹⁶ *Ibid.*, p. 147.

¹⁷ *Ibid.*, p. 148.

¹⁸ *Ibid.*, p. 42.

¹⁹ *Ibid.*, p. 79.

²⁰ *Ibid.*, p. 80.

²¹ Thomson, p. 72.

²² Messer, p. 64.

²³ Hodge, p. 193.

²⁴ Messer, p. 44.

Bibliography

Audrain County Historical Society, History of Audrain County Missouri: An Update, 1936-1986. Mexico MO, Audrain County Historical Society, 1986.

Daily Railroad Schedule, Mexico Intelligencer, September 24, 1885, p. 1.

Hodge, Leta, A Gathering of Our Days, Columbia, MO: Pebble Publishing, 1997.

Kniffen, Fred. "The American Agricultural Fair: The Pattern." Annals of the Association of American Geographers 39 (December, 1949).

Messer, Gayle, Audrain County, Missouri, Reflections of the Past, 1945-2000: A Pictorial History. Virginia Beach, VA: Donning Company, 1999.

Phillip & Co. Remodels, Mexico Intellegence, September 10, 1885, p. 6.

Schooley, Herschel. Centennial History of Audrain County, Mexico MO, McIntyre Publishing Company, 1937.

Thomson, Max, ed. The Pictorial History of Mexico, 1880-1959, Saddle Horse and Fire Clay Capital of the World, Marceline, MO, Heritage House Publishing for Mexico Ledger and Audrain County Historical Society, 1990.

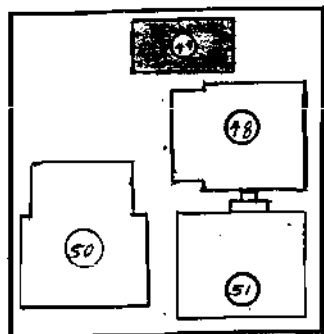
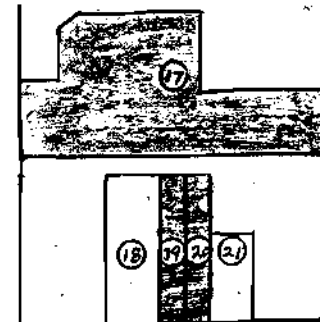
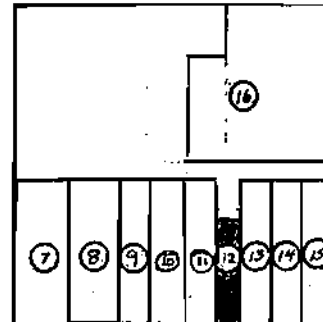
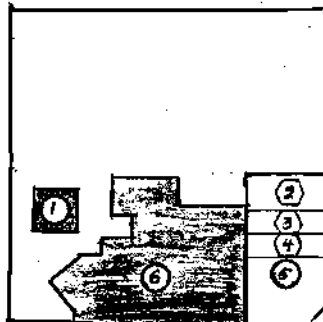
Voss, Stuart F. "Town Growth in Central Missouri, 1815-1880: An Urban Chapparral, Part 1," Missouri Historical Review 64 October, 1969.

Appendix A

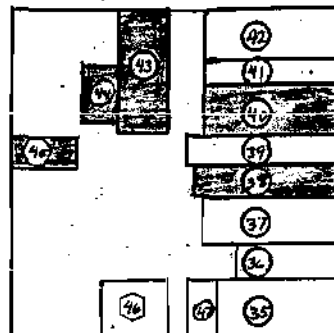
Appendix B

Appendix C

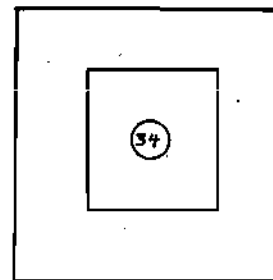
MEXICO, MISSOURI DOWNTOWN HISTORIC DISTRICT SURVEY AREA



CLARK

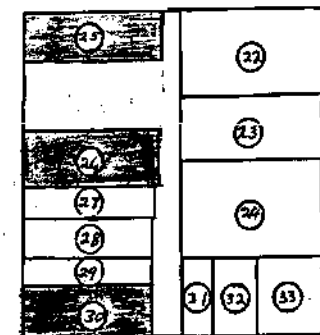


MONROE



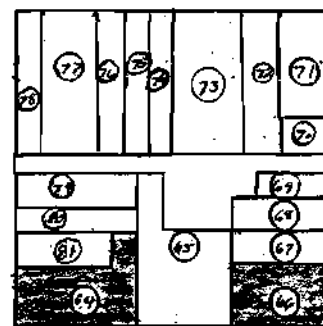
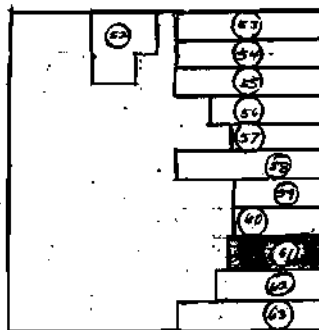
WASHINGTON

JEFFERSON

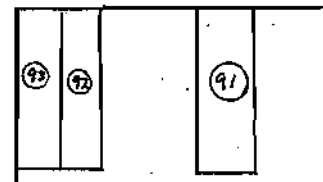
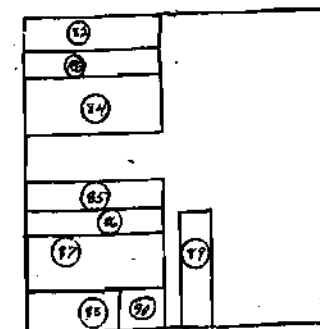


COAL

JACKSON



PROMENADE



Non-contributing and not eligible properties



Scale of feet
0 100'

Survey Number	Property Name	Address	Date	Elegibility
01	208 North Clark	208 North Clark	ca. 1920	NE
02	+207 North Washington	207 North Washington	ca. 1905	C
03	+205 Manpower	205 North Washington	ca. 1940	C
04	+203 North Washington	203 North Washington	ca. 1940	C
05	+Mexico Ledger Building	210 North Washington	1876	C
06	Mexico Service Center	211 West Monroe	ca. 1935	NE
07	+Moore's Grocery	123 - 121 West Monroe	ca. 1880	C
08	+Ann's Fashions	117 West Monroe	ca. 1880	C
09	+Imagine Tanning Salon	115 West Monroe	ca. 1880	C
10	+Congoleum Designs	111 West Monroe	ca. 1880	C
11	+Erdel & Wood Home Center	109 West Monroe	ca. 1880	C
12	+Pizza Works	107 West Monroe	ca. 1990	NC
13	+The Grapevine	105 West Monroe	ca. 1880	C
14	+Brett, Erdel, Van Matre, & Tanzey, Attornies at Law	103 West Monroe	ca. 1880	C
15	+101 West Monroe	101 West Monroe	ca. 1880	C
16	+Coca Cola Botting Company	221 North Jefferson	1934	C
17	Pearl Motor Company	220 North Jefferson	ca 1915	NE
18	*Robinson Heating & Cooling	107 East Monroe	ca. 1885	C
19	*Mexico Travel Agency	111 East Monroe	ca. 1880	NC
20	*American Express Office	113 East Monroe	ca. 1880	NC
21	*C & S Business Services	117 East Monroe	ca. 1899	C
22	*National Guard Armory	112 East Monroe	ca 1910	C
23	*Coal Steet Antiques	111 North Coal	ca 1892	C
24	*Smith Brothers Hatchery	105 North Coal	ca. 1917	C
25	Fredendall Department Store	120 North Jefferson	ca. 1885	NC
26	Mid Missouri Accounting and Sticky Wicket	110 & 112 North Jefferson	ca. 1885	NC
27	Seigfreid Law Firm	108 North Jefferson	ca. 1880	C
28	Charm Hallmark Gift	106 North Jefferson	ca. 1880	C
29	Safford Shoe Store	104 North Jefferson	ca. 1880	C
30	Jefferson Dry Goods	100 North Jefferson	ca. 1880	NC
31	*Farm Bureau Insurance	113 East Jackson	ca. 1892	C
32	*Leonatti & Baker PC Attorneys	123 East Jackson	ca. 1890	C
33	*Leonatti & Attorneys (2)	123 East Jackson (2)	ca. 1905	C
34	+Audrain County Memorial Courthouse	Courthouse Square	1951	C
35	+Kabrich Opera House	101 - 103 North Washington	1875	C
36	+Blattner's	105 North Washington	ca. 1880	C
37	+107 & 109 North Washington	107 - 109 North Washington	ca. 1880	C
38	+World Finance Corporation	111 North Washington	ca. 1880	NC
39	+Rusty's Bakery	113 North Washington	ca. 1885	C
40	+Cinema Plus	115 North Washington	ca. 1885	NC
41	+Pro Nails	119 North Washington	ca. 1885	C
42	+Golden Palace	123 North Washington	ca. 1890	C
43	216 & 218 West Monroe	216 & 218 West Monroe	ca. 1905	NE
44	Foster Muffler	116 North Clark	ca. 1925	NE
45	112 & 110 North Clark	112 & 110 North Clark	ca. 1945	NE
46	+Audrain Insurance Agency	217 & 213 West Jackson	ca. 1895	C
47	+Steve's Style and Barber	211 West Jackson	ca. 1920	C
48	Carnegie Library	305 West Jackson	1913	E
49	Randy's Frozen Meat	310 West Monroe	ca. 1940	NE

50	First Christian Church	307 West Jackson	1905	E
51	Mexico - Audrain County Library	305 West Jackson	1912	E
52	+212,214,216, West Jackson	212,214,216, West Jackson	ca. 1945	C
53	+Melahn Insurance Agency	101 South Washington	ca. 1885	C
54	+Melody's Quality Jewelry	103 South Washington	ca. 1885	C
55	+Total Printing	105 South Washington	ca. 1885	C
56	+Vic's Place	107 South Washington	ca. 1885	C
57	+Lakenan & Barnes	109 South Washington	ca. 1895	C
58	+China Restaurant Annex	111 South Washington	ca. 1885	C
59	+China Restaurant	113 South Washington	ca. 1885	C
60	+Dagwood's Subs & Sandwiches	115 South Washington	ca. 1885	C
61	+Castles's and E&K Jewelry	117, 119 South Washington	ca. 1885	NC
62	+Terminal Barber Shop	121 South Washington	ca. 1885	C
63	+Charlie's Pest Control	209 West Promenade	ca.1885	C
64	+Aluminum, Brick & Glass Workers Local 790	117 120 West Promenade	ca. 1885	NC
65	+Hassen Creamery	109,111,113 W. Promenade	ca. 1920	C
66	+Modern Loan & American Family Insurance	119, 121 South Jefferson	ca. 1885	NC
67	+Mechlin Furniture	117,117A South Jefferson	ca. 1885	C
68	+Mechlin Furniture (2)	115 South Jefferson	ca. 1885	C
69	+Ron's Barber Shop	113 South Jefferson	1886	C
70	+US Army Recruiting & Jefferson Beauty Shop	111, 109 South Jefferson	ca. 1934	C
71	+Chamber of Commerce	100 West Jackson	1935	C
72	+Dollar Store	110 West Jackson	ca. 1935	C
73	+Montgomery Ward Dept. Store	112, 114 West Jackson	ca. 1930	C
74	+Countyside Home Loans & Merle Norman Studio	118, 120 West Jackson	ca. 1885	C
75	+SOS Shipping & Cellular Today	122,122A West Jackson	ca. 1885	C
76	+Audrain Ballet Company	124 West Jackson	ca. 1885	C
77	+126 West Jackson	126 West Jackson	ca. 1885	C
78	+City Incubator	128 West Jackson	ca. 1885	C
79	+Hawaiian Shave Ice	108 South Washington	ca. 1940	C
80	+Fox Building	112,114 South Washington	ca. 1880	C
81	+Smith Electronics & Mexico Barber Shop	116,118 South Washington	ca. 1885	C
82	+Weddings by Pilcher's	100 South Jefferson	ca. 1880	C
83	+Pilcher Jewelry	102 South Jefferson	ca. 1880	C
84	+Stitch In Time	104 South Jefferson	ca. 1920	C
85	+112 South Jefferson	112 South Jefferson	ca. 1885	C
86	+114 South Jefferson	114 South Jefferson	ca. 1885	C
87	+Morris Building	116,118 South Jefferson	ca. 1885	C
88	+Jefferson Hotel	120 South Jefferson	ca. 1885	C
89	+Dr. David Luke's Office	113 East Promenade	ca. 1910	C
90	+105,107,109 East Promenade	105,107,109 E. Promenade	ca. 1895	C
91	+Brady's Paint and Glass	108 West Promenade	ca. 1905	C
92	+Crown Linen Service	120 West Promenade	ca. 1910	C
93	+Crown Linen Service (2)	122 West Promenade	ca. 1905	C

"C" = contributing to a district

"NC" = noncontributing to a district

"E" = individually eligible

"NE" = not individually eligible

+ refers to the Courthouse Square District

* refers to the East Monroe and Coal Street District

Properties designated with a "C" but not in one of the above proposed districts have sufficient integrity to contribute to a district if boundaries could be devised which would include the building.

Courthouse Square Historic District

02	+207 North Washington	207 North Washington	ca. 1905	C
03	+205 Manpower	205 North Washington	ca. 1940	C
04	+203 North Washington	203 North Washington	ca. 1940	C
05	+Mexico Ledger Building	210 North Washington	1876	C
07	+Moore's Grocery	123 - 121 West Monroe	ca. 1880	C
08	+Ann's Fashions	117 West Monroe	ca. 1880	C
09	+Imagine Tanning Salon	115 West Monroe	ca. 1880	C
10	+Congoleum Designs	111 West Monroe	ca. 1880	C
11	+Erdel & Wood Home Center	109 West Monroe	ca. 1880	C
12	+Pizza Works	107 West Monroe	ca.,1990	NC
13	+The Grapevine	105 West Monroe	ca. 1880	C
14	+Brett, Erdel, Van Matre, & Tanzey, Attornies at Law	103 West Monroe	ca. 1880	C
15	+101 West Monroe	101 West Monroe	ca. 1880	C
16	+Coca Cola Bottling Company	221 North Jefferson	1934	C
34	+Audrain County Memorial Courthouse	Courthouse Square	1951	C
35	+Kabrich Opera House	101 - 103 North Washington	1875	C
36	+Blatner's	105 North Washington	ca. 1880	C
37	+107 & 109 North Washington	107 - 109 North Washington	ca. 1880	C
38	+World Finance Corporation	111 North Washington	ca. 1880	NC
39	+Rusty's Bakery	113 North Washington	ca. 1885	C
40	+Cinema Plus	115 North Washington	ca. 1885	NC
41	+Pro Nails	119 North Washington	ca. 1885	C
42	+Golder Palace	123 North Washington	ca. 1890	C
46	+Audrain Insurance Agency	217 & 213 West Jackson	ca. 1895	C
47	+Steve's Style and Barber	211 West Jackson	ca. 1920	C
52	+212,214,216, West Jackson	212,214,216, West Jackson	ca. 1945	C
53	+Melahn Insurance Agency	101 South Washington	ca. 1885	C
54	+Melody's Quality Jewelry	103 South Washington	ca. 1885	C
55	+Total Printing	105 South Washington	ca. 1885	C
56	+Vic's Place	107 South Washington	ca. 1885	C
57	+Lakenan & Barnes	109 South Washington	ca. 1895	C
58	+China Restaurant Annex	111 South Washington	ca. 1885	C
59	+China Restaurant	113 South Washington	ca. 1885	C
60	+Dagwood's Subs & Sandwiches	115 South Washington	ca. 1885	C
61	+Castles's and E&K Jewelry	117, 119 South Washington	ca. 1885	NC
62	+Terminal Barber Shop	121 South Washington	ca. 1885	C
63	+Charlie's Pest Control	209 West Promenade	ca.1885	C
64	+Aluminum, Brick & Glass Workers Local 790	117 120 West Promenade	ca. 1885	NC
65	+Hassen Creamery	109,111,113 W. Promenade	ca. 1920	C
66	+Modern Loan & American Family Insurance	119, 121 South Jefferson	ca. 1885	NC
67	+Mechlin Furniture	117,117A South Jefferson	ca. 1885	C
68	+Mechlin Furniture (2)	115 South Jefferson	ca. 1885	C
69	+Ron's Barber Shop	113 South Jefferson	1886	C
70	+US Army Recruiting & Jefferson Beauty Shop	111, 109 South Jefferson	ca. 1934	C
71	+Chamber of Commerce	100 West Jackson	1935	C
72	+Dollar Store	110 West Jackson	ca. 1935	C
73	+Montgomery Ward Dept. Store	112, 114 West Jackson	ca. 1930	C

Courthouse Square Historic District

74	+Countyside Home Loans & Merle Norman Studio	118, 120 West Jackson	ca. 1885	C
75	+SOS Shipping & Cellular Today	122,122A West Jackson	ca. 1885	C
76	+Audrain Ballet Company	124 West Jackson	ca. 1885	C
77	+126 West Jackson	126 West Jackson	ca. 1885	C
78	+City Incubator	128 West Jackson	ca. 1885	C
79	+Hawaiian Shave Ice	108 South Washington	ca. 1940	C
80	+Fox Building	112,114 South Washington	ca. 1880	C
81	+Smith Electronics & Mexico Barber Shop	116,118 South Washington	ca. 1885	C
82	+Weddings by Pilcher's	100 South Jefferson	ca. 1880	C
83	+Pilcher Jewelry	102 South Jefferson	ca. 1880	C
84	+Stitch In Time	104 South Jefferson	ca. 1920	C
85	+112 South Jefferson	112 South Jefferson	ca. 1885	C
86	+114 South Jefferson	114 South Jefferson	ca. 1885	C
87	+Morris Building	116,118 South Jefferson	ca. 1885	C
88	+Jefferson Hotel	120 South Jefferson	ca. 1885	C
89	+Dr. David Luke's Office	113 East Promenade	ca. 1910	C
90	+105,107,109 East Promenade	105,107,109 E. Promenade	ca. 1895	C
91	+Brady's Paint and Glass	108 West Promenade	ca. 1905	C
92	+Crown Linen Service	120 West Promenade	ca. 1910	C
93	+Crown Linen Service (2)	122 West Promenade	ca. 1905	C

East Monroe and Coal Streets Historic District

18	*Robinson Heating & Cooling	107 East Monroe	ca. 1885	C
19	*Mexico Travel Agency	111 East Monroe	ca. 1880	NC
20	*American Express Office	113 East Monroe	ca. 1880	NC
21	*C & S Business Services	117 East Monroe	ca. 1899	C
22	*National Guard Armory	112 East Monroe	ca 1910	C
23	*Coal Street Antiques	111 North Coal	ca 1892	C
24	*Smith Brothers Hatchery	105 North Coal	ca. 1917	C
31	*Farm Bureau Insurance	113 East Jackson	ca. 1892	C
32	*Leonatti & Baker PC Attorneys	123 East Jackson	ca. 1890	C
33	*Leonatti & Attorneys (2)	123 East Jackson (2)	ca. 1905	C

Survey Properties outside of Proposed Districts

01	208 North Clark	208 North Clark	ca. 1920	NE
06	Mexico Service Center	211 West Monroe	ca. 1935	NE
17	Pearl Motor Company	220 North Jefferson	ca 1915	NE
25	Fredendall Department Store	120 North Jefferson	ca. 1885	NC
26	Mid Missouri Accounting and Sticky Wicket	110 & 112 North Jefferson	ca. 1885	NC
27	Seigfreid Law Firm	108 North Jefferson	ca. 1880	C
28	Charm Hallmark Gift	106 North Jefferson	ca. 1880	C
29	Safford Shoe Store	104 North Jefferson	ca. 1880	C
30	Jefferson Dry Goods	100 North Jefferson	ca. 1880	NC
43	216 & 218 West Monroe	216 & 218 West Monroe	ca. 1905	NE
44	Foster Muffler	116 North Clark	ca. 1925	NE
45	112 & 110 North Clark	112 & 110 North Clark	ca. 1945	NE
48	Carnegie Library	305 West Jackson	1913	E
49	Randy's Frozen Meat	310 West Monroe	ca. 1940	NE
50	First Christian Church	307 West Jackson	1905	E
51	Mexico - Audrain County Library	305 West Jackson	1912	E