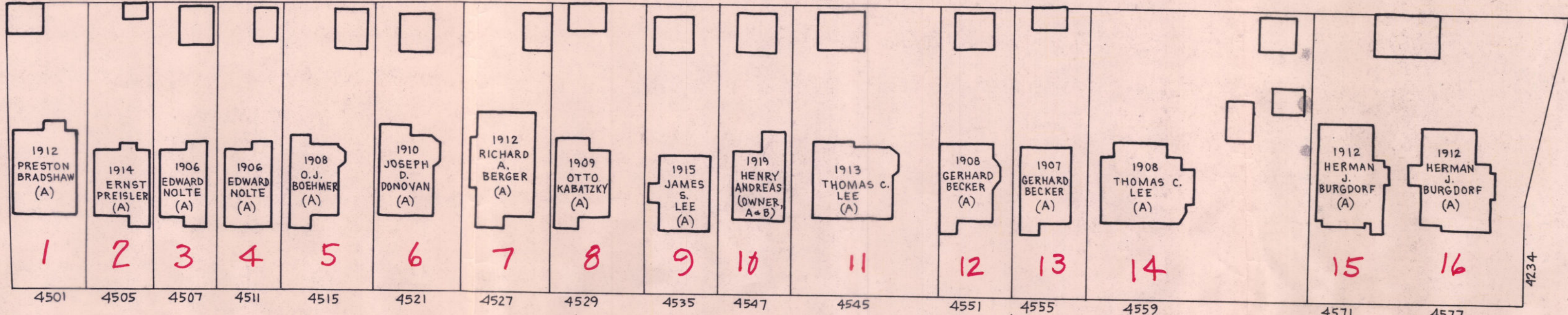
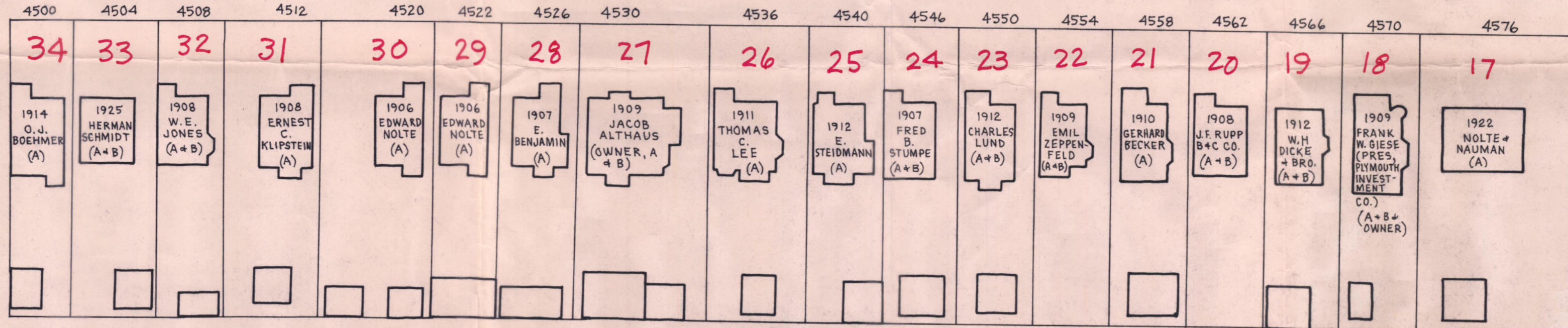


CB3553



HOLLY AVE. (PLACE)



CB3552

1" = 50'0"

ROSALIE

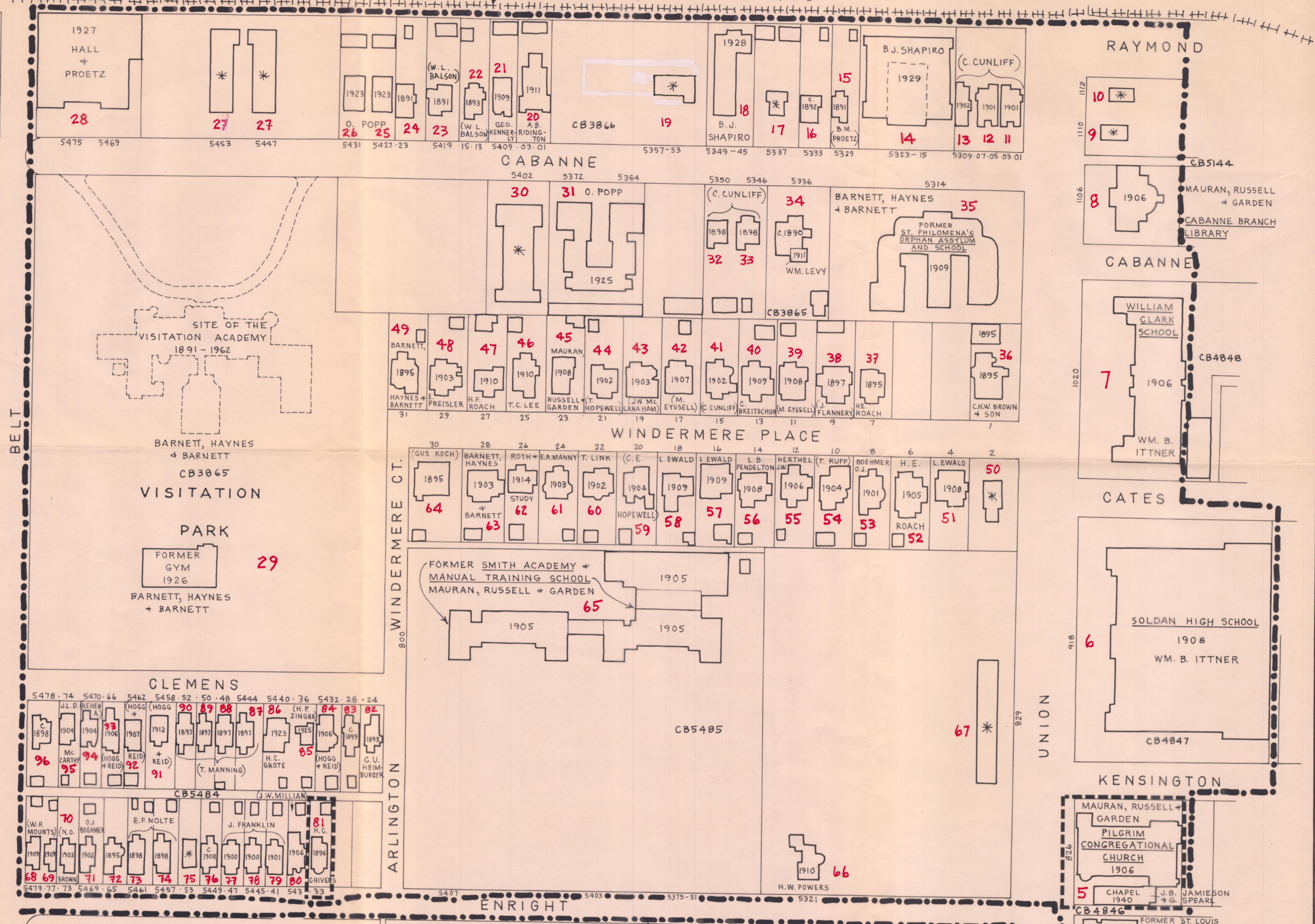
W. FLORISSANT AVE.

O'FALLON PARK

ARCHITECTURAL SURVEY OF HOLLY PLACE
 JULY 1986 ST. LOUIS, MISSOURI
 LANDMARKS ASSOCIATION OF ST. LOUIS

A = ARCHITECT
 (B) = BUILDER

FORMER NARROW GAUGE RAILROAD



ARCHITECTURAL SURVEY OF VISITATION PARK

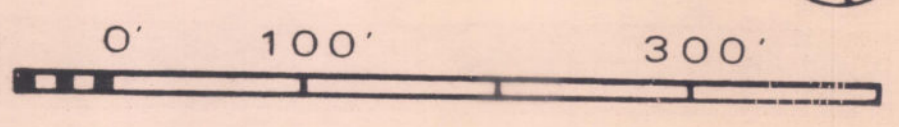
ARCHITECTS & DATES (BUILDERS OR CONTRACTORS)

SEPTEMBER 1986 ST. LOUIS, MISSOURI
 LANDMARKS ASSOCIATION OF ST. LOUIS, INC.
 FOR THE COMMUNITY DEVELOPMENT AGENCY

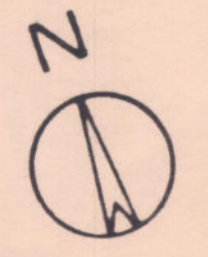
1-96 Inventory Sheets

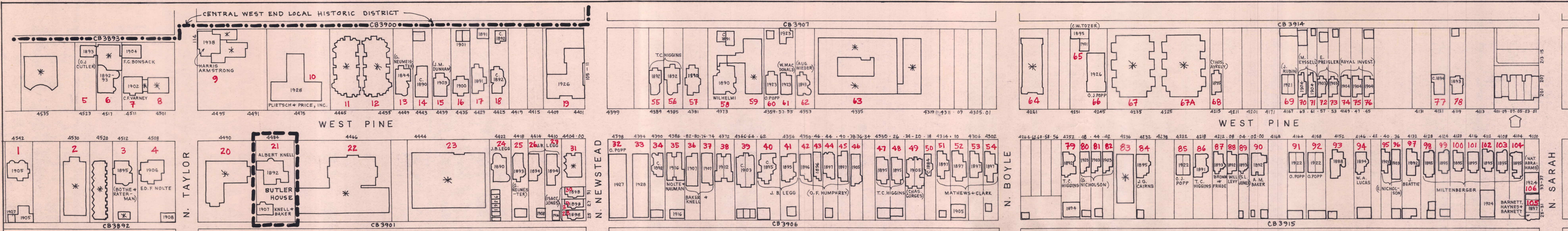
- * NON-CONTRIBUTING BUILDINGS:
BUILT SINCE 1936
- LOCAL HISTORIC DISTRICT
- LOCAL HISTORIC LANDMARK

PREPARATION OF THIS MAP WAS FINANCED WHOLLY THROUGH A GRANT FROM THE DEPARTMENT OF HOUSING AND URBAN DEVELOPMENT AND THE COMMUNITY DEVELOPMENT AGENCY OF ST. LOUIS UNDER THE PROVISIONS OF TITLE 1 OF THE HOUSING AND COMMUNITY DEVELOPMENT ACT OF 1980 (PL96-399)



MAP: PAT HAYS BAER





ARCHITECTURAL SURVEY OF WEST PINE
 SEPTEMBER 1986 ST. LOUIS, MISSOURI
 LANDMARKS ASSOCIATION OF ST. LOUIS

- LOCAL HISTORIC DISTRICT
- - - LISTED ON THE NATIONAL REGISTER OF HISTORIC PLACES
- * NON-CONTRIBUTING BUILDINGS - BUILT SINCE 1937
- A = ARCHITECT
- (B) = BUILDER
- ◻ = DEMOLISHED SINCE MARCH 1986

1"=100'0"