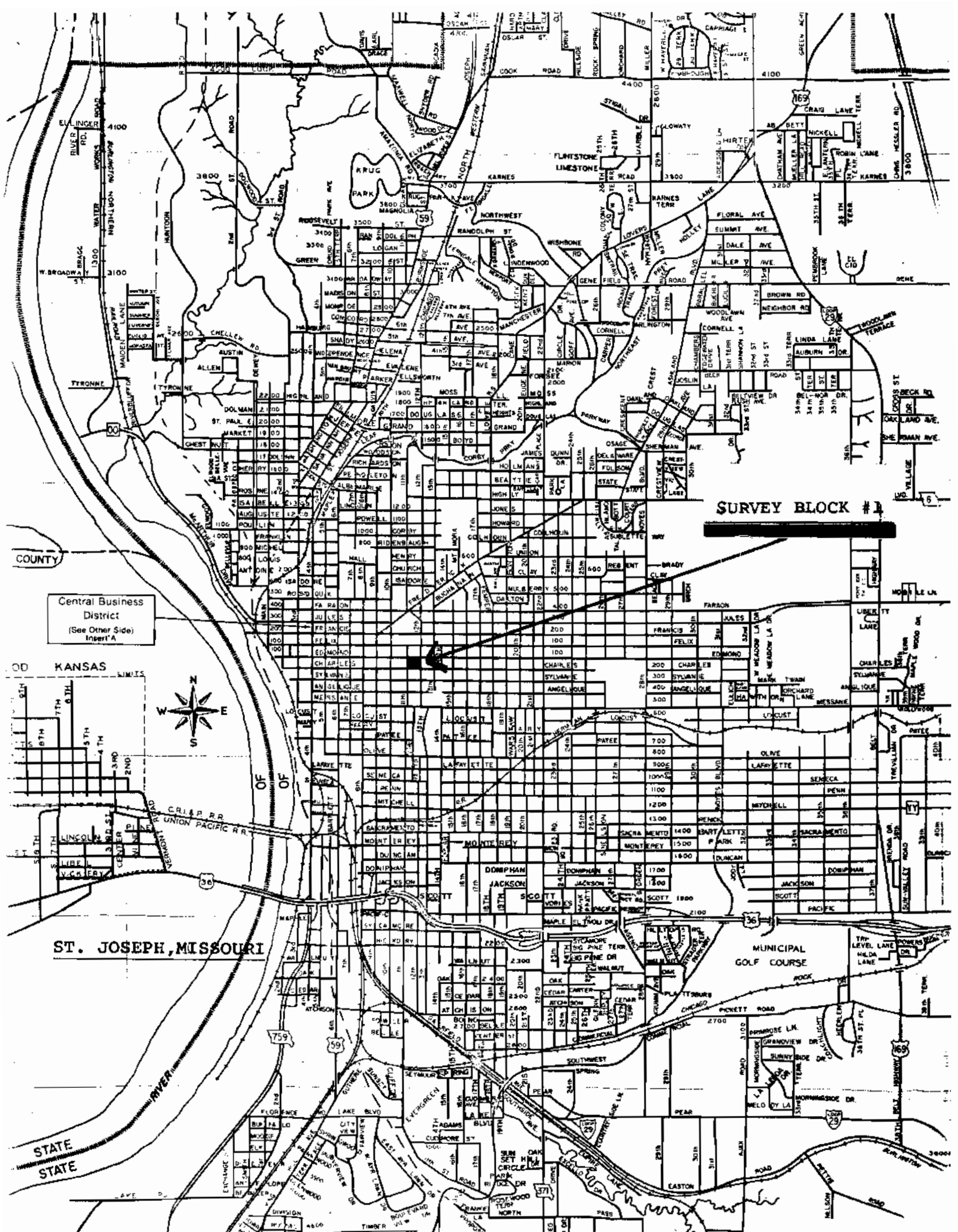


ST. JOSEPH, MISSOURI

SURVEY BLOCK #1

FALL, 1978

NWMSU Historical Survey
Thomas Carneal, Director



SURVEY BLOCK #1

Central Business District
(See Other Side)
Insert 'A'



ST. JOSEPH, MISSOURI

MUNICIPAL GOLF COURSE

STATE STATE

COUNTY

KANSAS



759

59

69

25

69

37

69

RECEIVED

Office of Historic
Preservation

ST. JOSEPH, MISSOURI

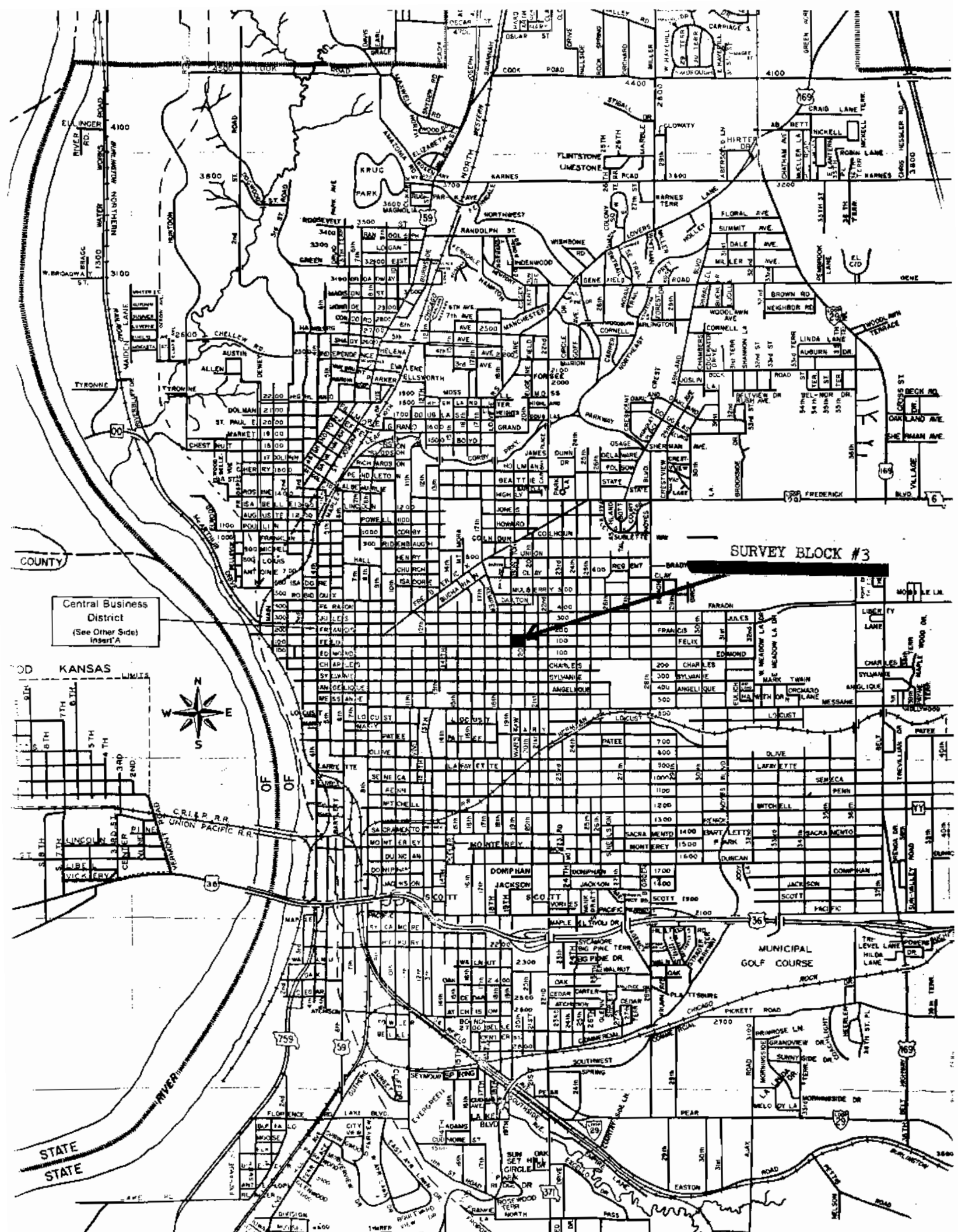
SURVEY BLOCK#2

FALL, 1978

NWMSU Historical Survey
Thomas Carneal, Director

SURVEY BLOCK #3

This area represents a series of homes constructed at different time periods over the past 130 years. A search of the County Histories and other material suggest that part of the homes could be grouped into a historic district. The homes for possible inclusion are located at: 105 N. 19th, and 119 N. 19th or Community Development numbers A-04-20 and A-04-36. These homes should be attached to the homes in the block immediately to the West as the William T. Harris Historic District. The home at 102 N. 20th has no relationship to the district and stands by itself as a ranch style in an older neighborhood.



Central Business District
(See Other Side)
Insert A



SURVEY BLOCK #3

KANSAS

STATE STATE

MUNICIPAL GOLF COURSE

759

59

36

169

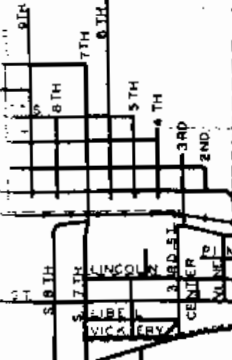
371

169

90

COUNTY

OD KANSAS



STATE STATE

MUNICIPAL GOLF COURSE

759

59

36

169

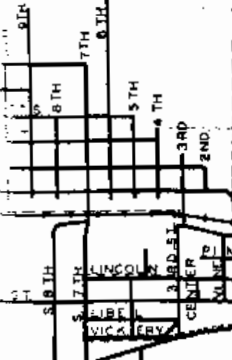
371

169

90

COUNTY

OD KANSAS



ST. JOSEPH, MISSOURI

SURVEY BLOCK #4

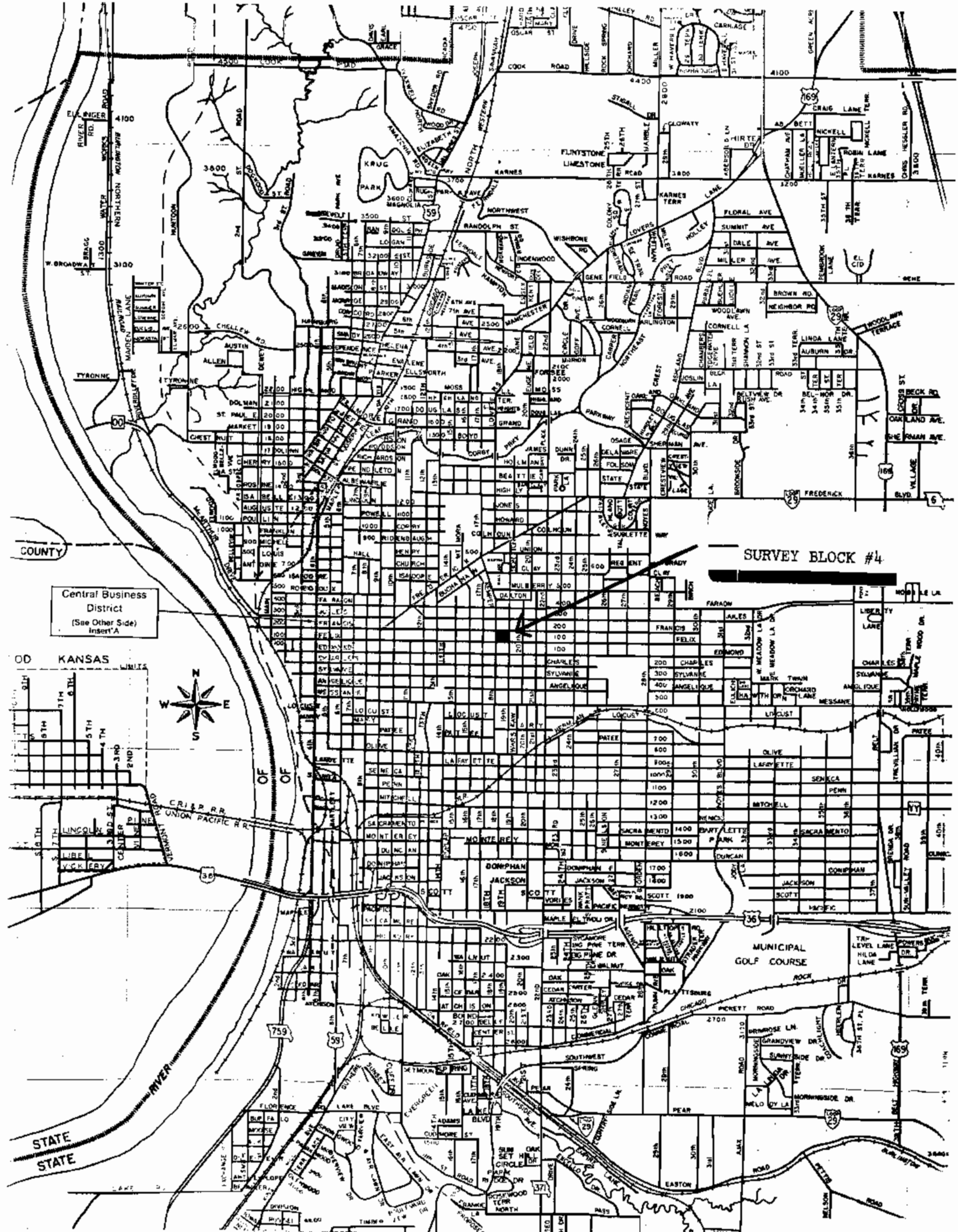
JANUARY, 1979

NWMSU Historical Survey

Thomas W. Carneal, Director

SURVEY BLOCK #4

This area represents a series of homes constructed at different time periods over the past 130 years. A search of the County Histories and other material suggest that entire block could be grouped into a historic district with only one intrusion being the fire station at 18th and Felix (A-01-19). These homes should be attached to the homes in the block immediately to the North as the William T. Harris Historic District.



SURVEY BLOCK #4

Central Business District
(See Other Side)
Insert A



STATE
STATE

MUNICIPAL
GOLF COURSE

COUNTY

OD KANSAS

ELK RIVER

W. BROADWAY

TYRONNE

TYRONNE

TYRONNE

TYRONNE

TYRONNE

TYRONNE

TYRONNE

TYRONNE

TYRONNE

TYRONNE

TYRONNE

TYRONNE

TYRONNE

TYRONNE

TYRONNE

TYRONNE

TYRONNE

TYRONNE

TYRONNE

TYRONNE

TYRONNE

TYRONNE

TYRONNE

TYRONNE

TYRONNE

TYRONNE

TYRONNE

TYRONNE

TYRONNE

TYRONNE

TYRONNE

TYRONNE

TYRONNE

TYRONNE

TYRONNE

TYRONNE

TYRONNE

TYRONNE

TYRONNE

TYRONNE

TYRONNE

TYRONNE

TYRONNE

TYRONNE

ST. JOSEPH, MISSOURI

SURVEY BLOCK #5

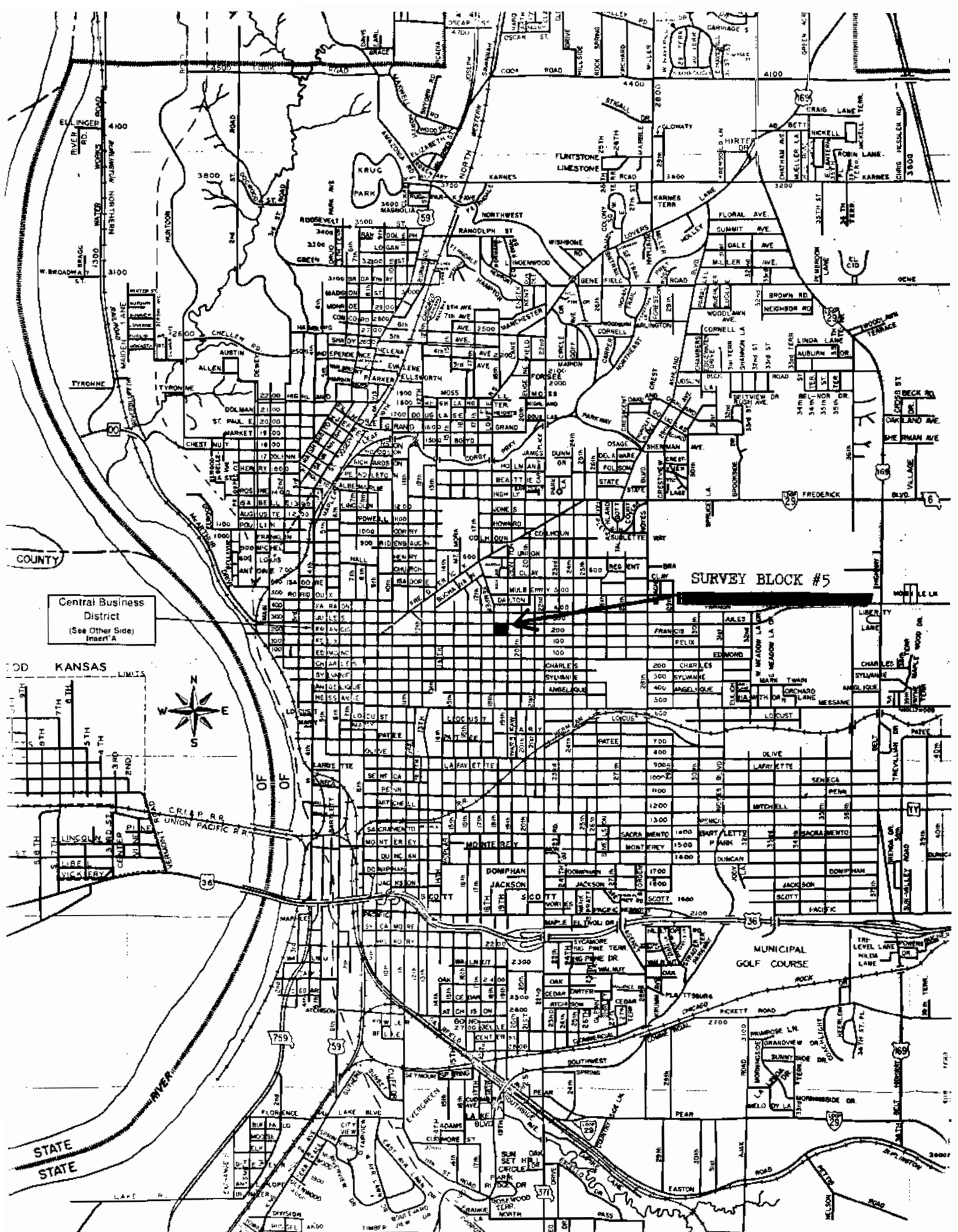
JANUARY, 1979

NWMSU Historical Survey

Thomas W. Carneal, Director.

Survey Block #5

This area represents a series of homes constructed at different time periods over the past 100 years. A search of the County Histories and other material indicates the homes at 209 N. 18th (B-01-04); 221 N. 18th (C-01-03); 206 N. 19th (B-01-01); 208 N. 19th (B-01-02); and 1815 Francis (B-01-03) have historic significance and should be connected with the William T. Harris Historic District which is located in the block directly south of both of these structures. The other homes in this block survey represent a variety of styles, but they can be duplicated in several other block surveys. There is not enough symmetry in this block to include it in the William T. Harris Historic District.



Central Business District
(See Other Side)
Insert A

SURVEY BLOCK #5



KANSAS

STATE STATE

MUNICIPAL GOLF COURSE

759

59

36

69

29

371

ST. JOSEPH, MISSOURI

SURVEY BLOCK #6

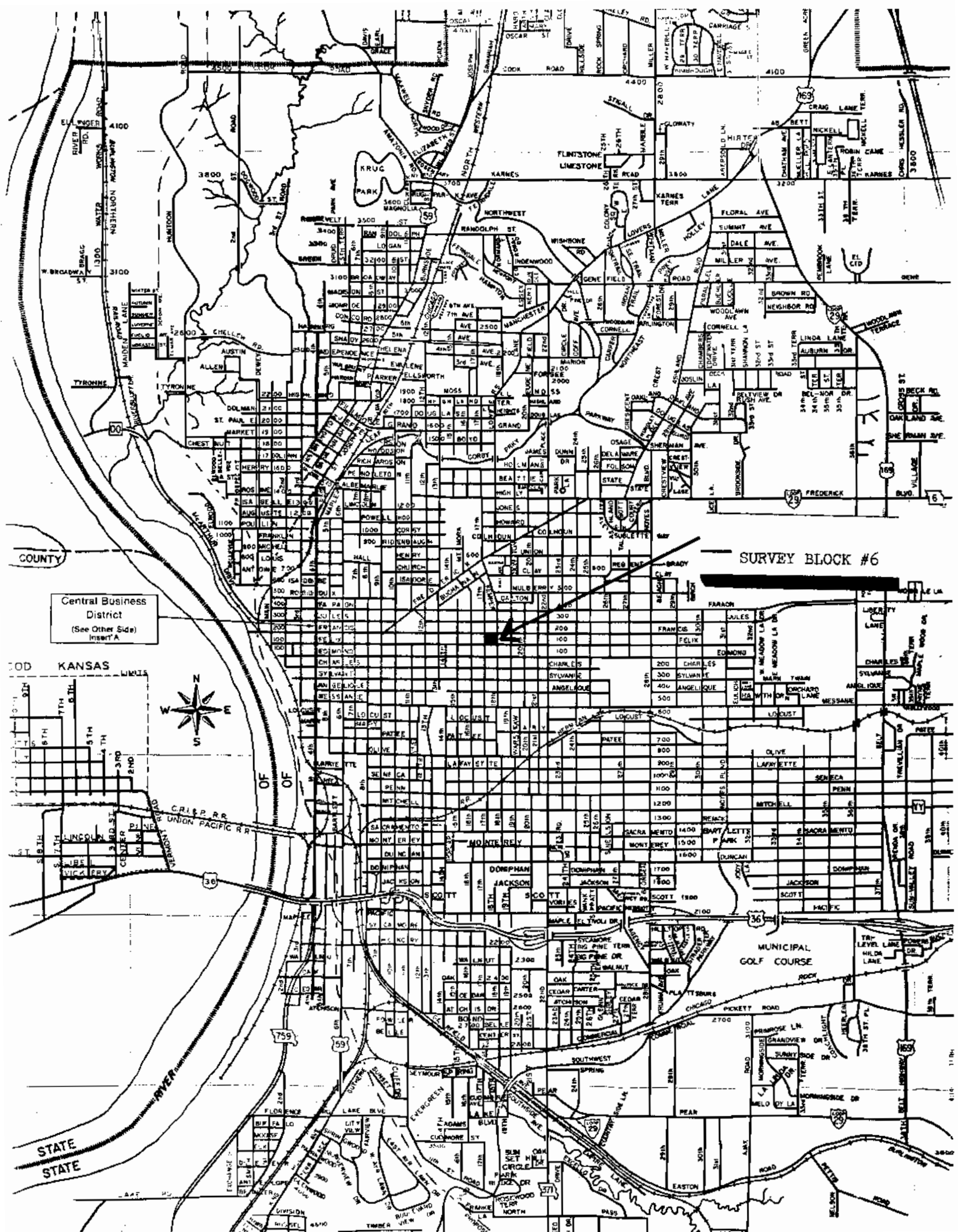
JANUARY, 1979

NWMSU Historical Survey

Thomas W. Carneal, Director

SURVEY BLOCK #6

This area represents a series of homes constructed at different time periods over the past 100 years. A search of the County Histories and other material indicates that only the homes at 1716 Francis (C-01-14 or C-47-27) and 1715 Felix (C-01-21) have any significance and should be connected with the William T. Harris Historic District which is located in the block directly East of both of these structures. The other homes in this block survey represent a variety of styles but they can be duplicated in several other block surveys. There is not enough symmetry in this block to include it in the William T. Harris Historic District.



SURVEY BLOCK #6

Central Business District
(See Other Side)
Insert A



STATE STATE RIVER

MUNICIPAL GOLF COURSE