

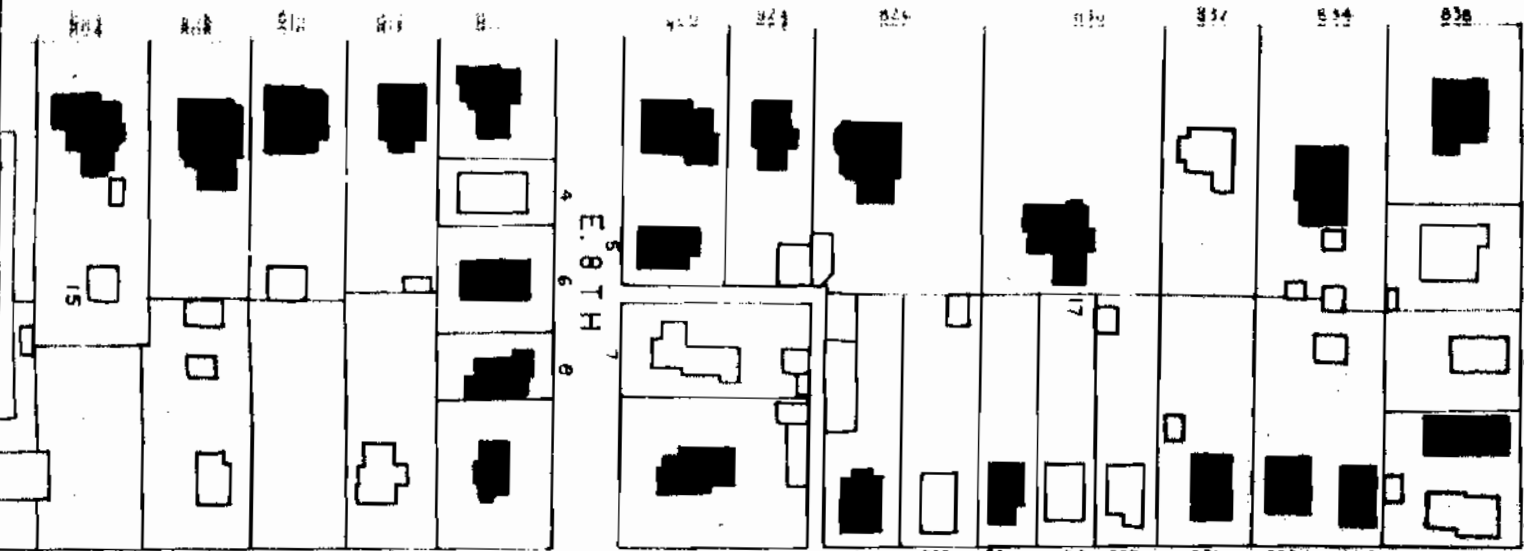
JEFFERSON



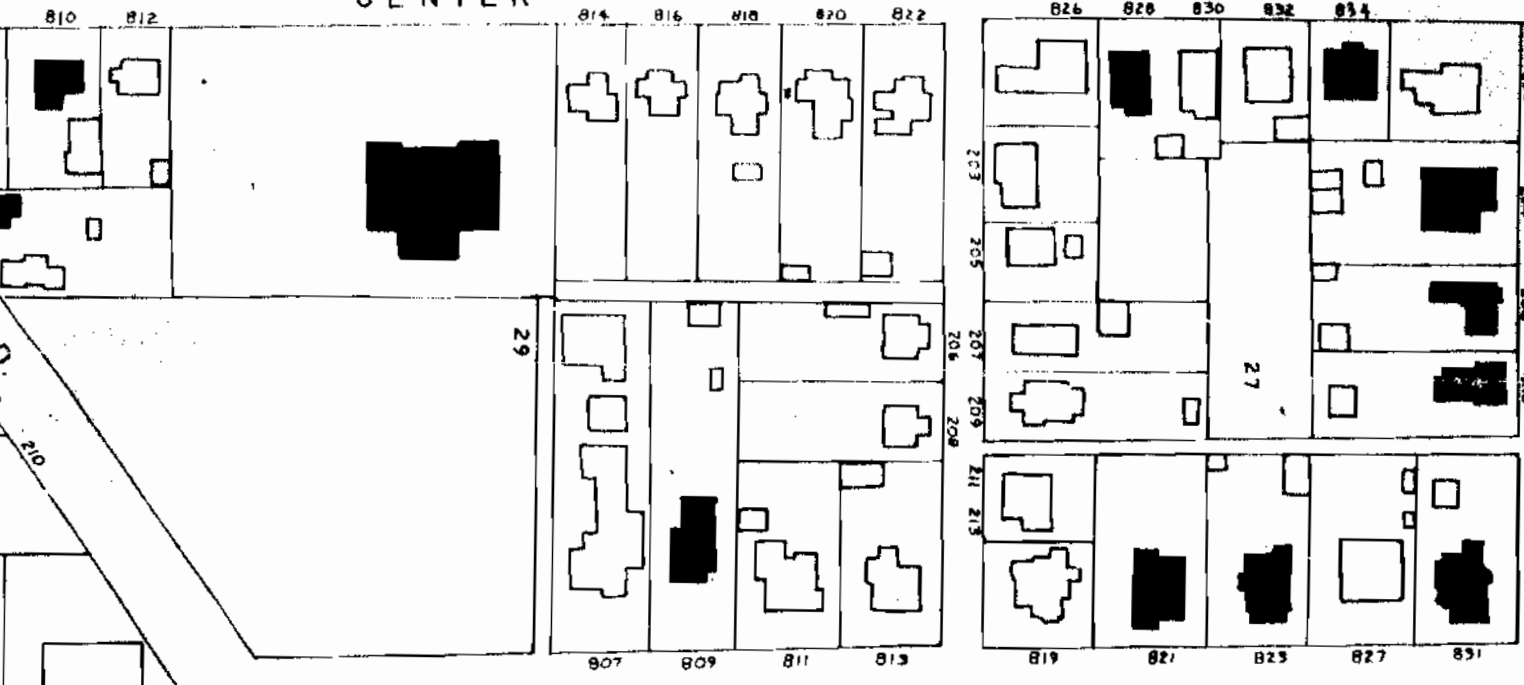
NICHOLS



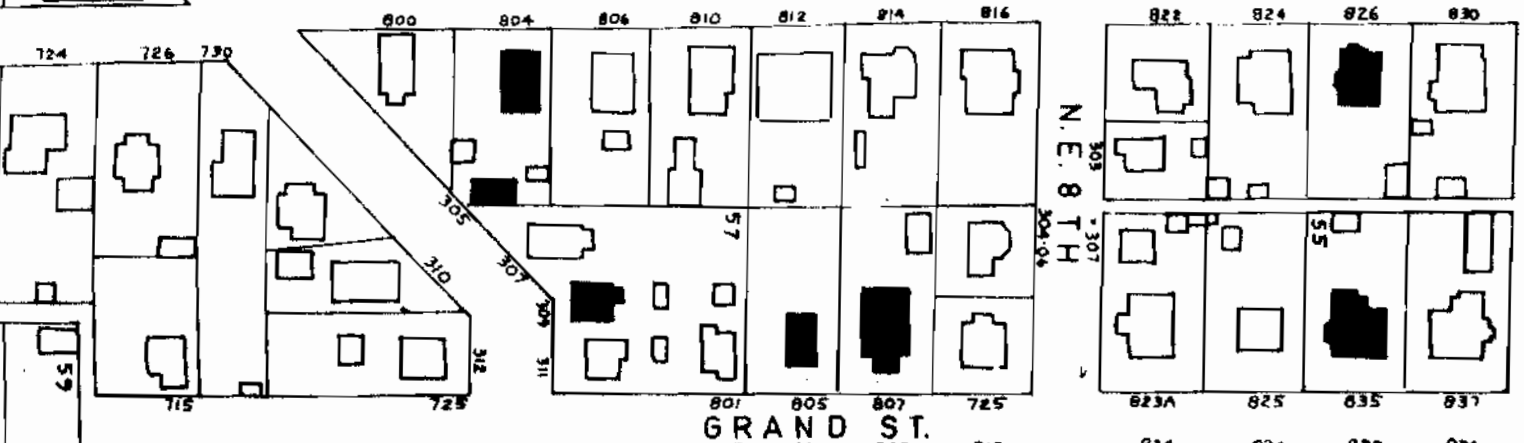
COURT



CENTER



GRAND ST.



W. 9TH

E. 9TH

N.E. 8TH



AVE.

W. 8TH

MARKET

W. 7TH

E. 7TH

W. 6TH

E. 6TH

W. 5TH

E. 5TH

W. 4TH

E. 4TH

JEFFERSON

Nichols St

First National Bank Callaway County
parking lot

parking lot

Niedergerke

parking lots

401 or 405 Nichols

100 W. 5th

107

405

505 513-515 517

523 525 527

508-05-07-09-11-13-15
523-25-27-29-31-33-35

508-10-12-14-16-18-20-22-24-26-28-30-32-34-36-38

402 404-06

500

510

512

516

522

602

608

614

702

710

716

802

808

902

908

401-05-07-09-11-13-15-17

508-05-07-09-11-13-15

508-10-12-14-16-18-20-22-24-26-28-30-32-34-36-38

17

18

19

20

21

22

23

24

25

26

27

28

29

30

31

32

33

34

35

108

109

110

111

112

113

114

115

116

117

118

119

120

121

122

123

124

125

126

127

106

107

108

109

110

111

112

113

114

115

116

117

118

119

120

121

122

123

124

125

104

105

106

107

108

109

110

111

112

113

114

115

116

117

118

119

120

121

122

123

102

103

104

105

106

107

108

109

110

111

112

113

114

115

116

117

118

119

120

121

100

101

102

103

104

105

106

107

108

109

110

111

112

113

114

115

116

117

118

119

98

99

100

101

102

103

104

105

106

107

108

109

110

111

112

113

114

115

116

117

96

97

98

99

100

101

102

103

104

105

106

107

108

109

110

111

112

113

114

115

94

95

96

97

98

99

100

101

102

103

104

105

106

107

108

109

110

111

112

113

92

93

94

95

96

97

98

99

100

101

102

103

104

105

106

107

108

109

110

111

90

91

92

93

94

95

96

97

98

99

100

101

102

103

104

105

106

107

108

109

88

89

90

91

92

93

94

95

96

97

98

99

100

101

102

103

104

105

106

107

86

87

88

89

90

91

92

93

94

95

96

97

98

99

100

101

102

103

104

84

85

86

87

88

89

90

91

92

93

94

95

96

97

98

99

100

101

102

82

83

84

85

86

87

88

LEGEND:

-  ARCHITECTURAL AND/OR HISTORICAL SIGNIFICANCE - THIS DESIGNATION INCLUDES BUILDINGS WHICH COULD BE ARCHITECTURALLY SIGNIFICANT IF THEY WERE PROPERLY RESTORED
-  LITTLE OR NO SIGNIFICANCE PERCEIVED AT THIS TIME

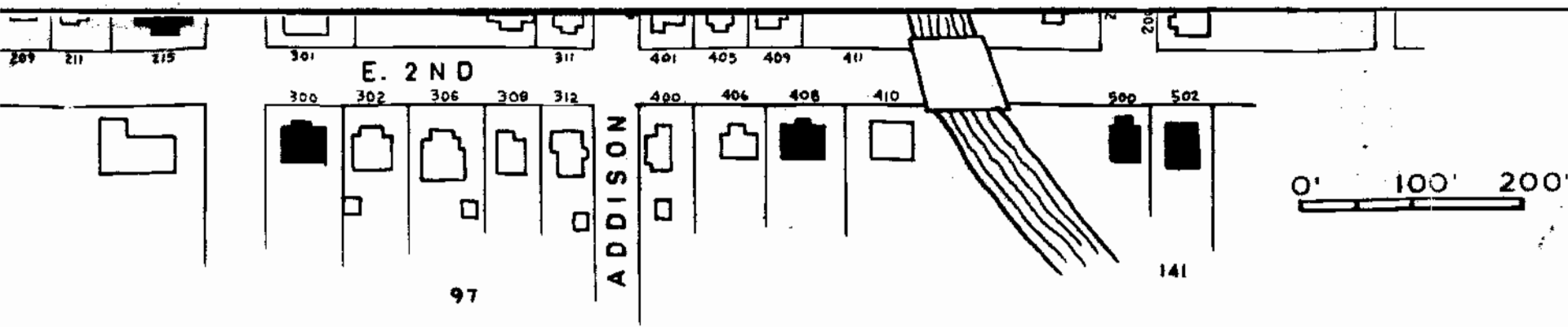
1978 - 1979 - PHYLLIS STRAWN

JUNE 1979 - CHARLES JONES

JAMES DARROUGH

PHYLLIS STRAWN

MAP BY PAT HAYS BAER



ARCHITECTURAL SURVEY FULTON, MISSOURI

MISSOURI HERITAGE TRUST, INC. P.O. BOX 895, JEFFERSON CITY, MISSOURI

PREPARATION OF THIS SURVEY WAS AIDED BY MATCHING FUNDS RECEIVED FROM THE U.S. DEPARTMENT OF INTERIOR THROUGH THE STATE HISTORIC PRESERVATION OFFICE AND THE CITY OF FULTON.

Inside
 Approximate area of
 Fulton sited by Postmaster
 July 27, 1984 article
 preferred site under consideration