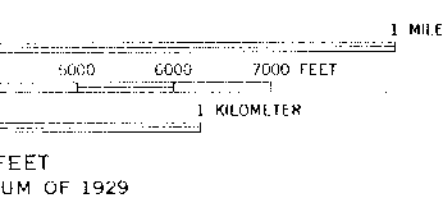
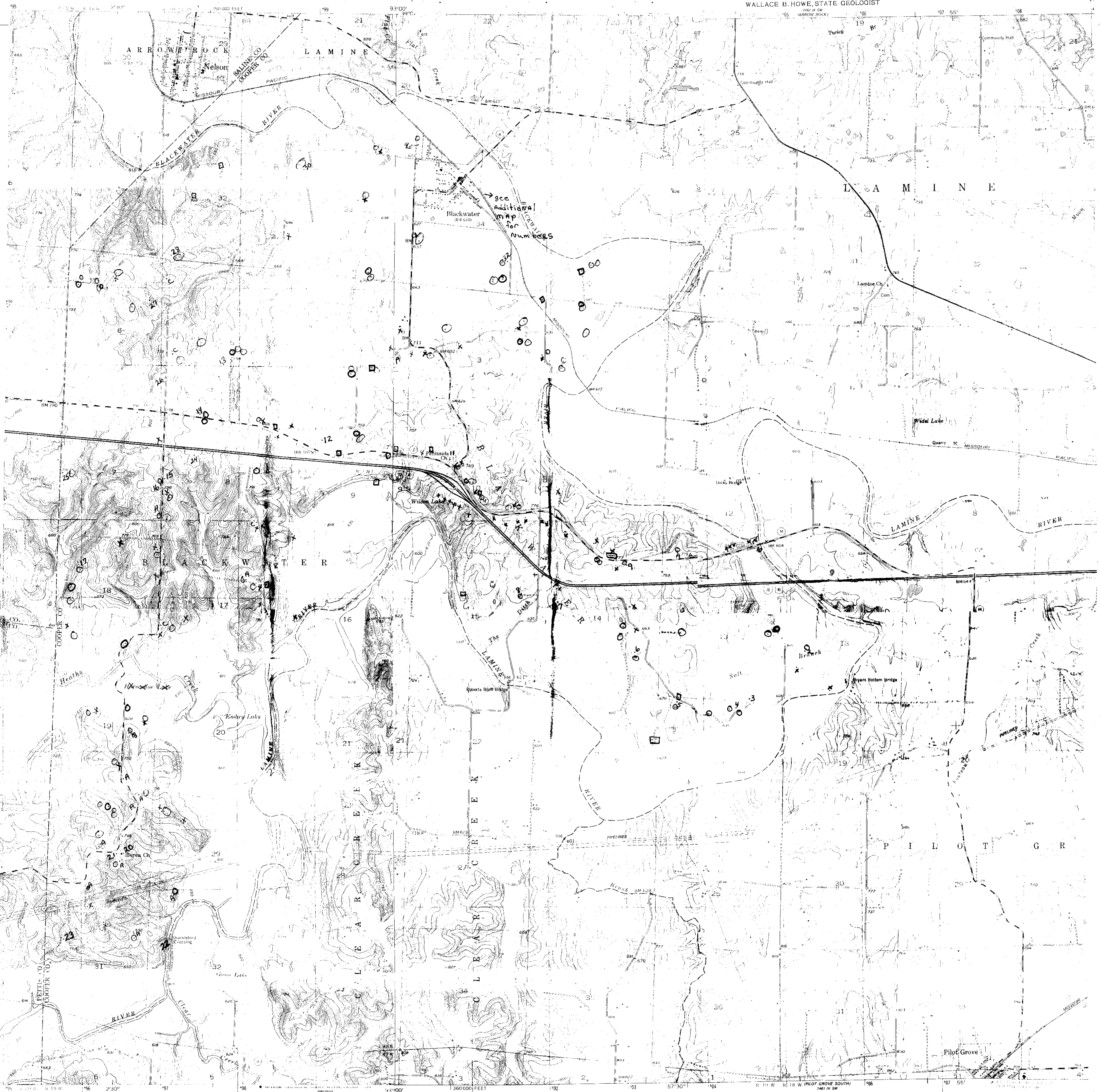


NELSON QUADRANGLE  
MISSOURI  
7.5 MINUTE SERIES (TOPOGRAPHIC)

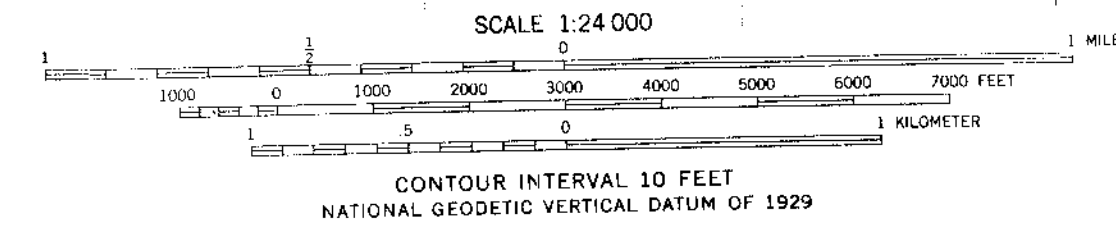
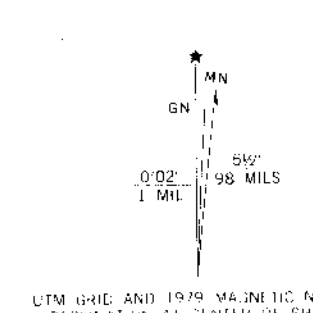
STATE OF MISSOURI  
DEPARTMENT OF NATURAL RESOURCES  
WALLACE B. HOWE, STATE GEOLOGIST

PILOT



**ROAD CLASSIFICATION**  
 Primary highway, hard surface  
 Secondary highway, hard surface  
 Unimproved road  
 Interstate Route U.S. Route State Route

Mapped, edited, and published by the Geological Survey  
 Control by USGS, USC&GS, and USCE  
 Topography from aerial photographs by Kelsch plotter  
 Aerial photographs taken 1947. Field check 1953  
 Polyconic projection. 1927 North American datum  
 10,000-foot grid based on Missouri coordinate system,  
 central zone  
 1000-meter Universal Transverse Mercator grid ticks,  
 zone 15, shown in blue  
 Elevations shown in purple, obtained from aerial photographs, taken  
 1977. Map edited 1979. This information not field checked



SCALE 1:24,000  
 CONTOUR INTERVAL 10 FEET  
 NATIONAL GEODETIC VERTICAL DATUM OF 1929

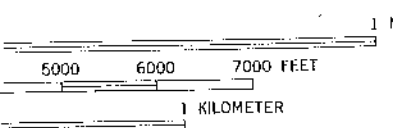
STANDARD MAP PROJECTIONS  
 DENVER, COLORADO 80225, OR RESTON, VIRGINIA 22092  
 TECHNICAL INFORMATION  
 ROLLA, MISSOURI 65401  
 INFORMATION IS AVAILABLE ON REQUEST

NELSON, MO.  
 PHOTO REVISOR 1979  
 AMS 7361 1 NE-SERIES V879

THIS MAP COMPLETES WITH NATIONAL MAP ACCURACY STANDARDS  
 FOR 1:50,000 BY U.S. GEOLOGICAL SURVEY, DENVER, COLORADO 80225, OR RESTON, VIRGINIA 22092  
 AND THE DIVISION OF RESEARCH AND TECHNICAL INFORMATION  
 MISSOURI DEPARTMENT OF NATURAL RESOURCES, DALLAS, MISSOURI 64401

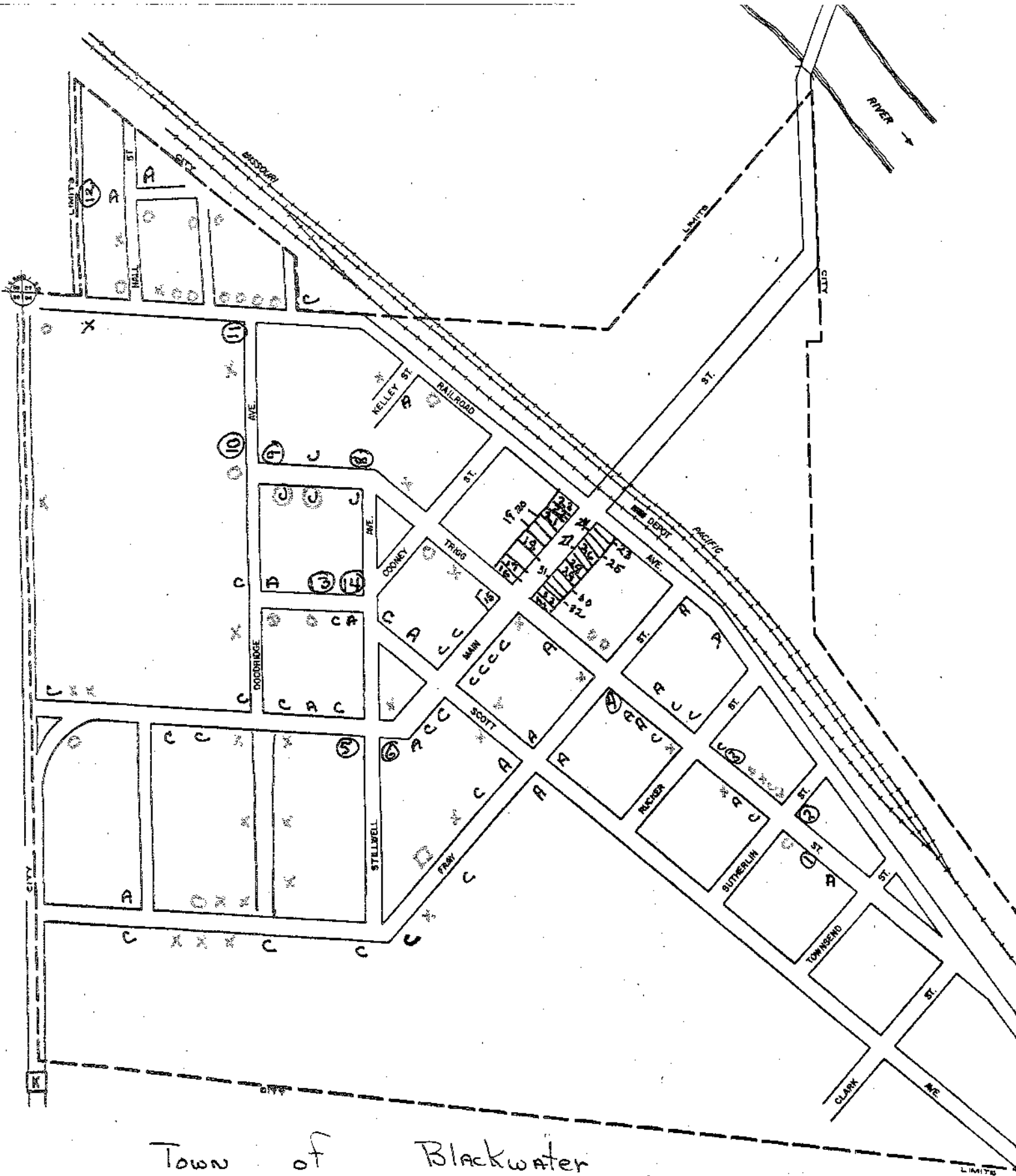


495 R. 20 W. R. 19 W. 496 2130' 497 498 INTERIOR GEOLOGICAL SURVEY, BLUNTON, VIRGINIA - 1970 4990000E 93°



**ROAD CLASSIFICATION**

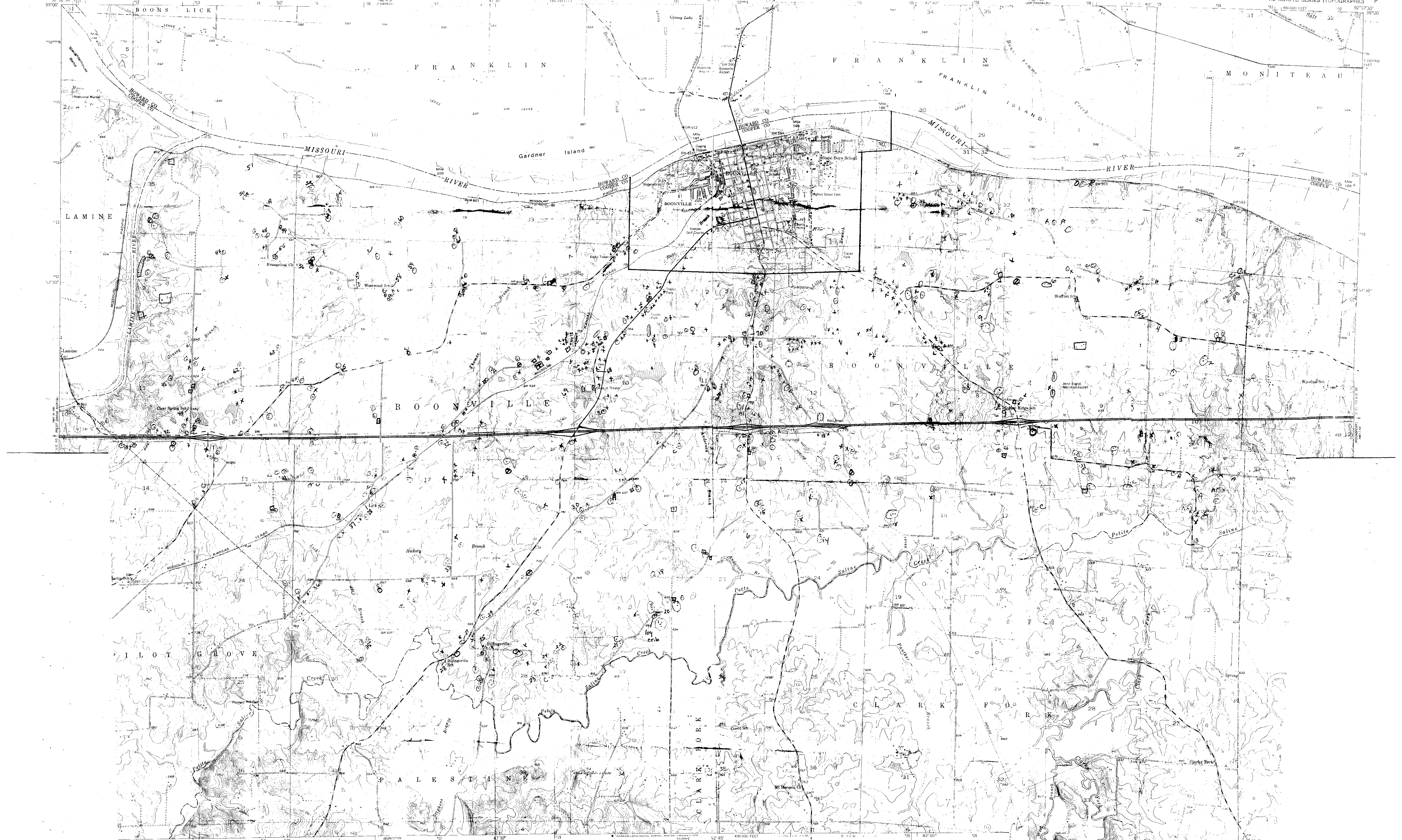
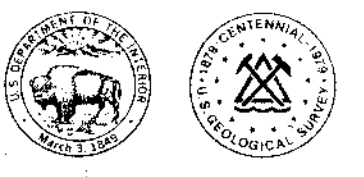
- Primary highway, hard surface
- Secondary highway, hard surface
- Light-duty road, hard or improved surface
- Unimproved road
- Interstate Route
- U.S. Route
- Slate Route



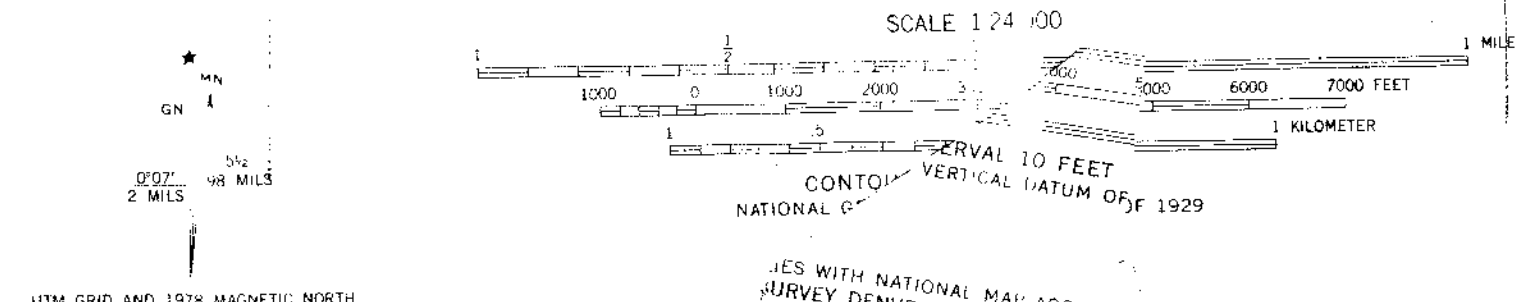
Town of Blackwater  
 Cooper County, Missouri  
 Blackwater Township

**BLACKWATER**  
 COOPER COUNTY  
 MISSOURI  
 1975

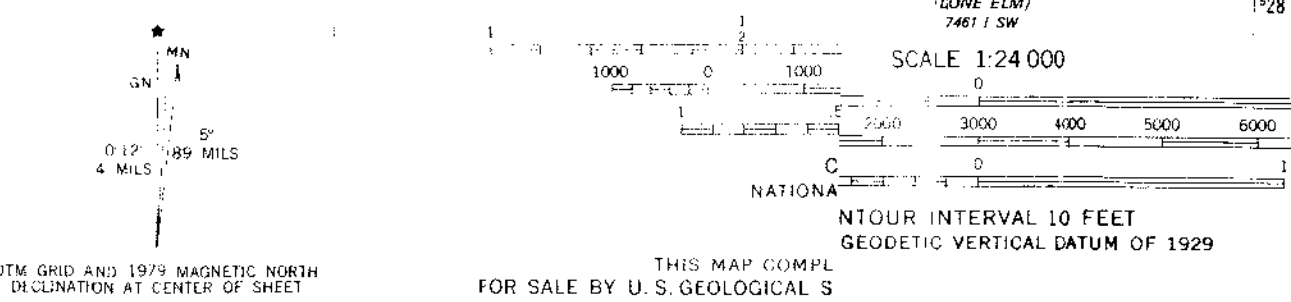




Published by the Geological Survey  
2645  
Photographs by Ketch plotter  
1953. Aerial photographs taken 1947  
7 North American datum  
Missouri coordinate system,  
inverse Mercator grid ticks.

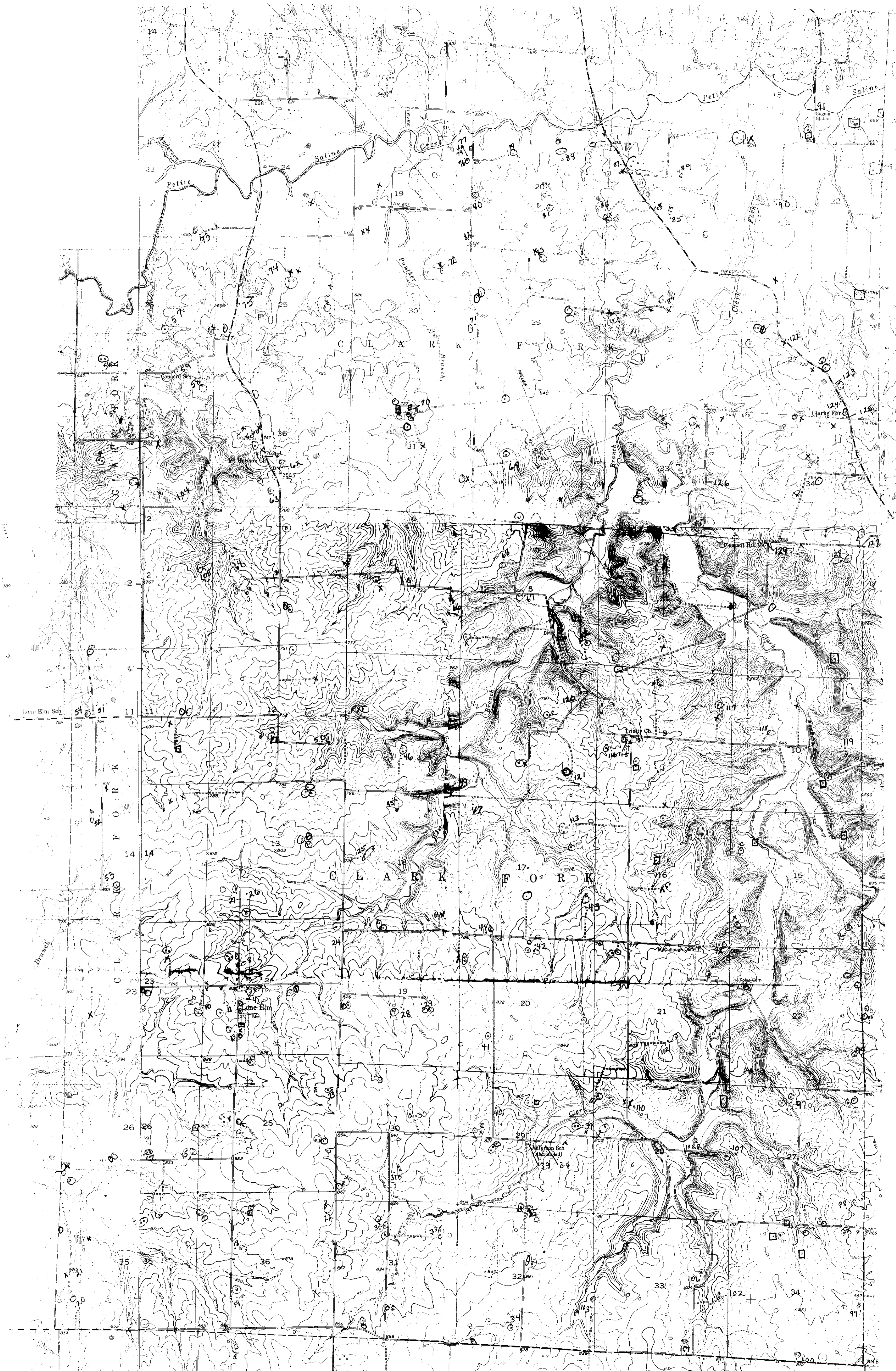


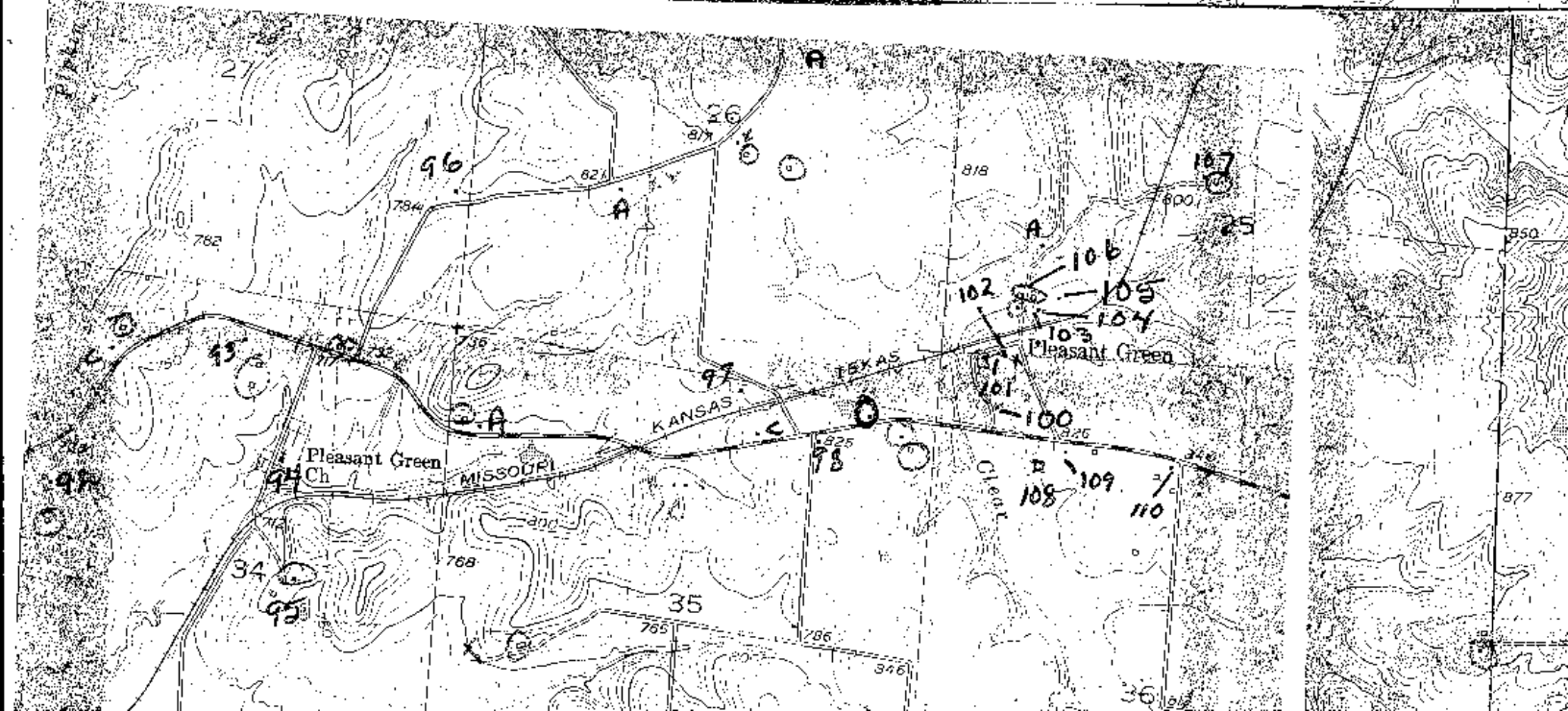
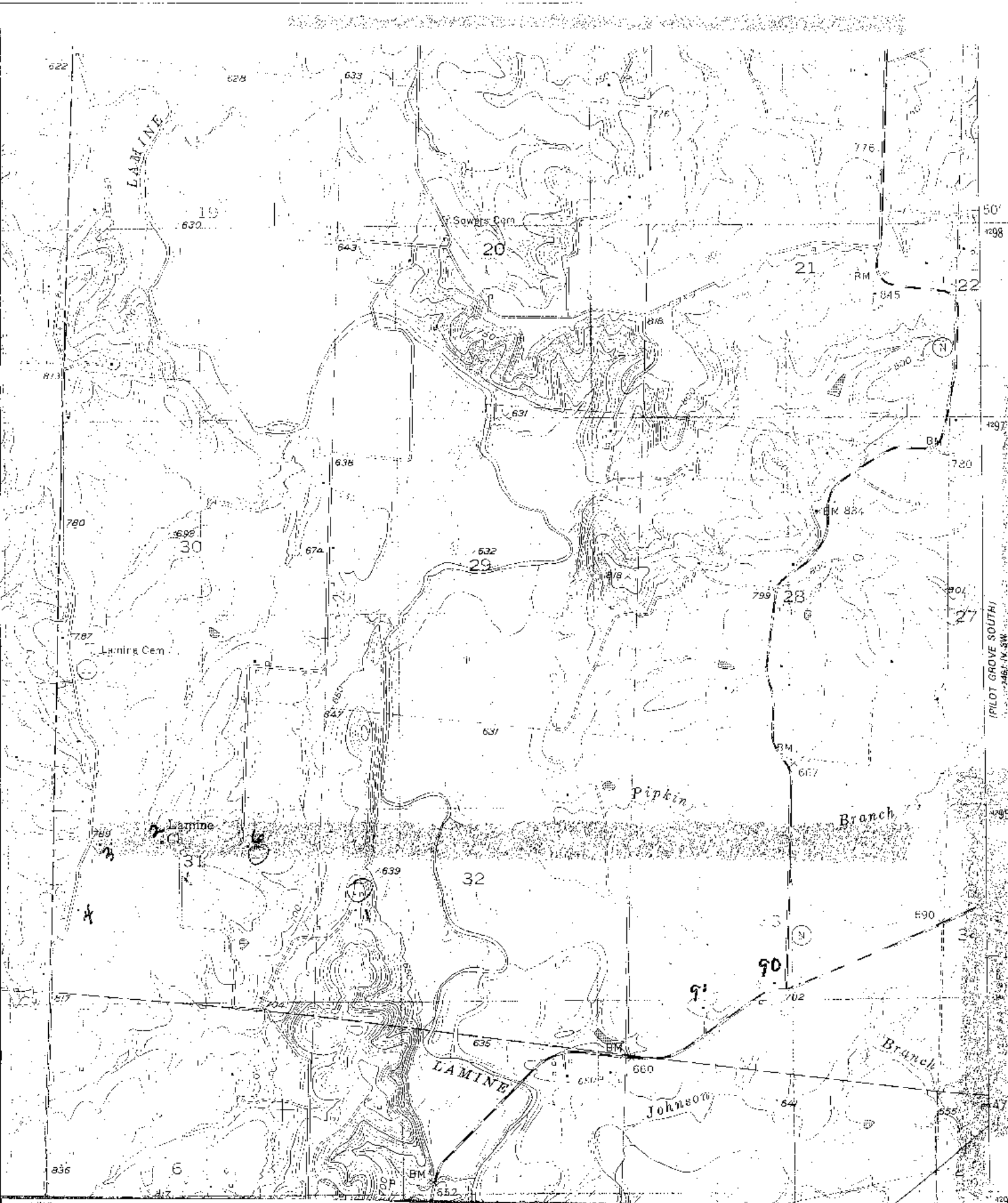
ROAD CLASSIFICATION  
Heavy-duty ————— Light-duty - - - - -  
Medium-duty - - - - - Unimproved dirt - - - - -  
U.S. Route State Route  
Intrastate Route  
Map edited and published by the Geological Survey  
Control: USGS, USCGS, and USCE  
Topography from aerial photographs by Ketch plotter  
Aerial photographs taken 1947. Field check 1952  
Projection: 1927 North American datum  
10,000 ft. grid based on Missouri coordinate system,  
control 2  
3rd indicates areas in which only  
and small fillings are shown.  
0.000 m. Universal Transverse Mercator grid ticks.



FOR SALE BY U.S. GEOLOGICAL SURVEY  
AND THE DIVISIONS WITH NATIONAL MAP ACCURACY STANDARDS

BILLINGSVILLE, MO





PETTIS CO  
COOPER CO



PILOT GROVE, S. 7. 40.

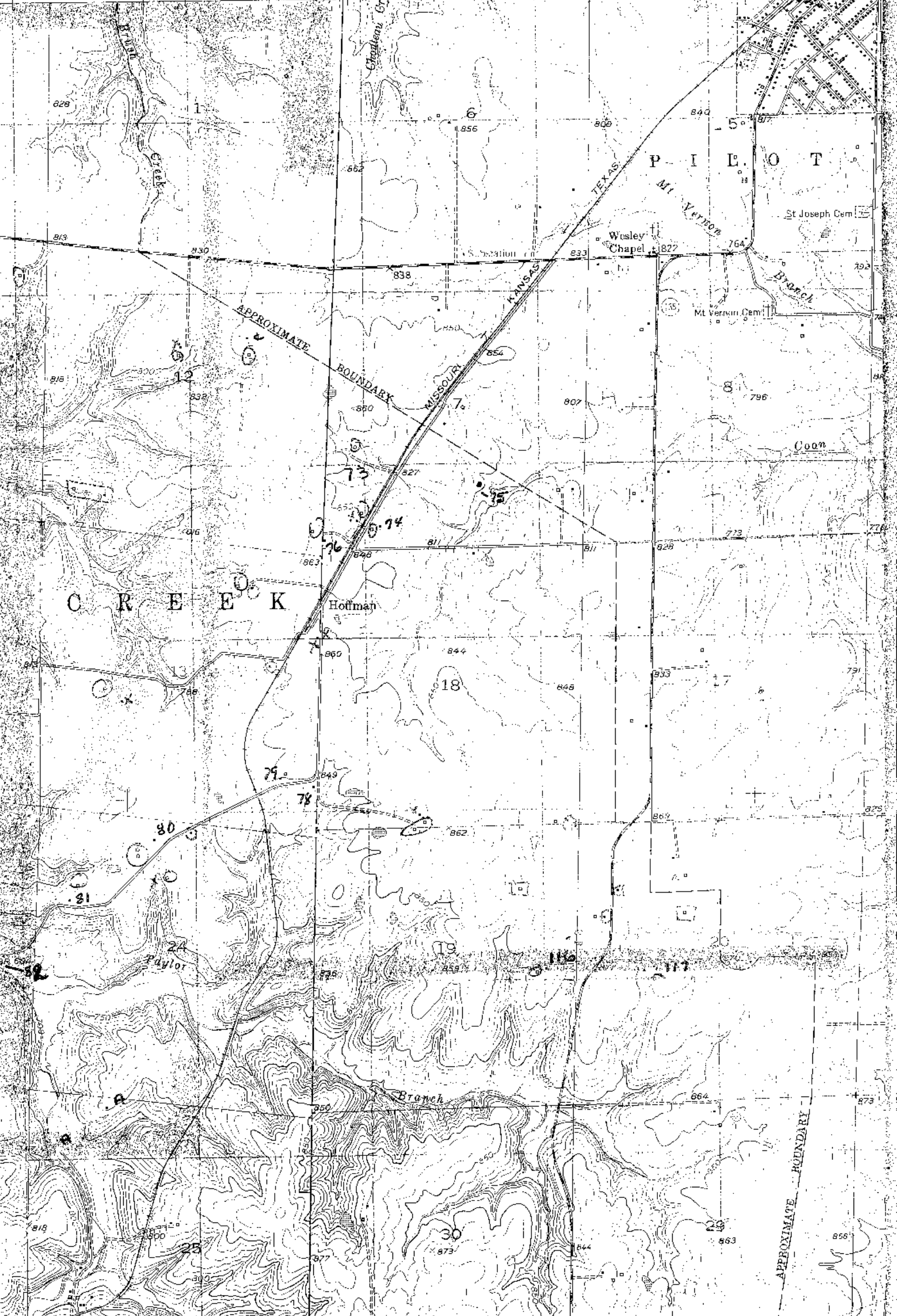
1 100-000  
FEET

PILOT GROVE SOUTH  
7461 N. 57.

4295

STATE OF MISSOURI  
DEPARTMENT OF NATURAL RESOURCES  
WALLACE B. HOWE, STATE GEOLOGIST

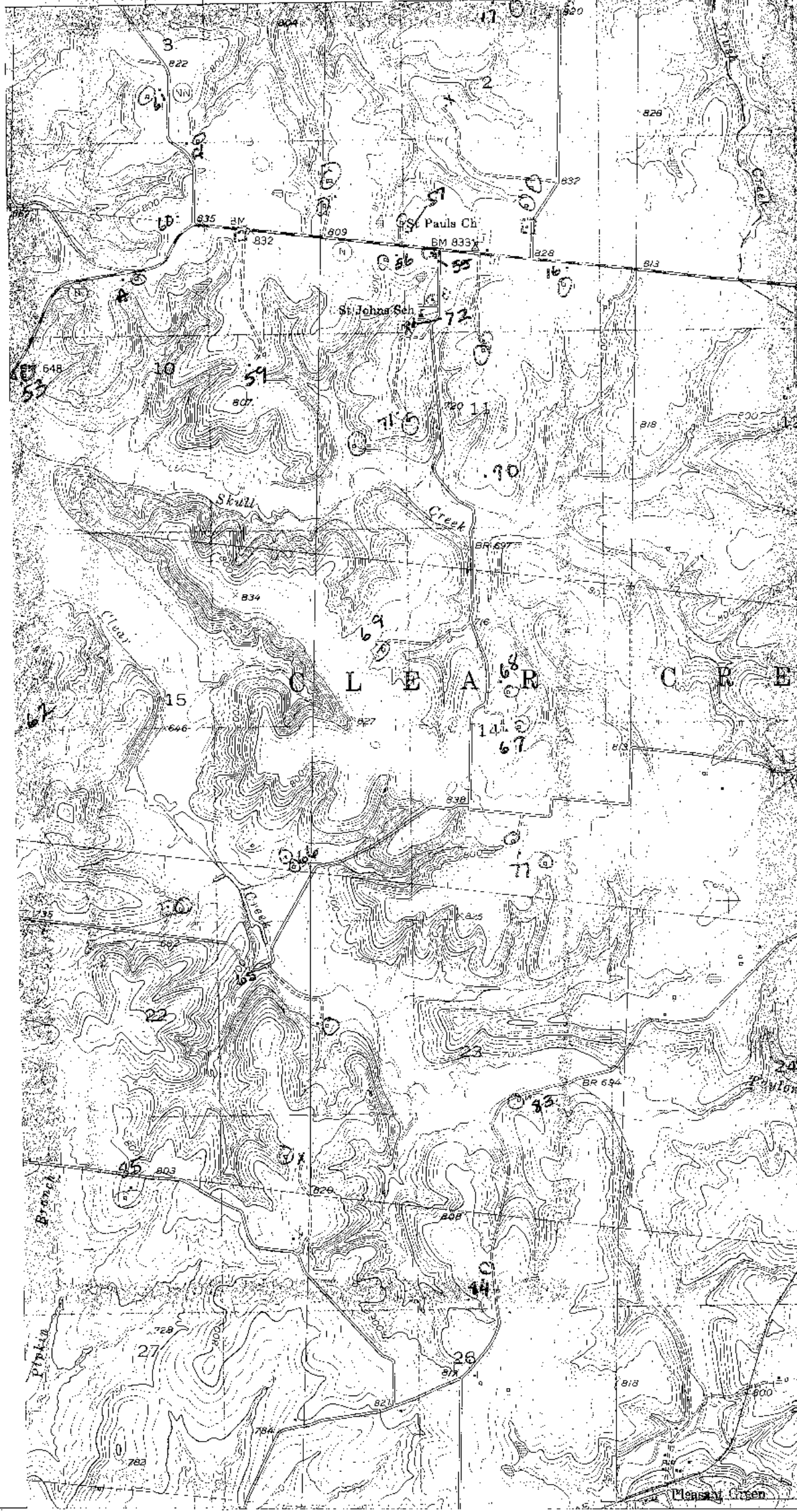
03 57'30" P. 19 W. 05 7461 IV NW (PILOT GROVE NORTH) R. 18 W. 07 55'



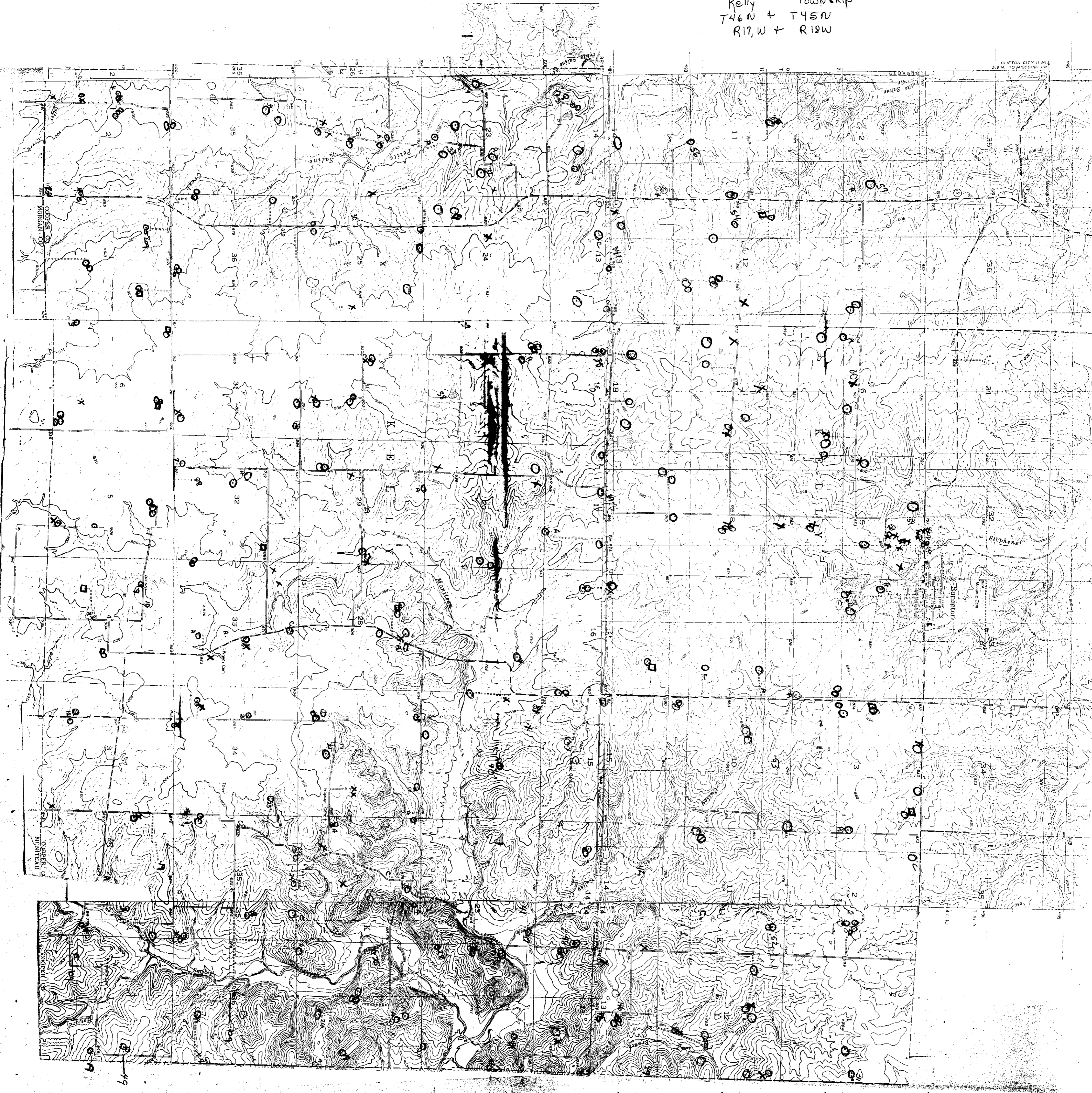
UNITED STATES  
DEPARTMENT OF THE INTERIOR  
GEOLOGICAL SURVEY



00' 5000000E 503 57'30" R. 1S.W.

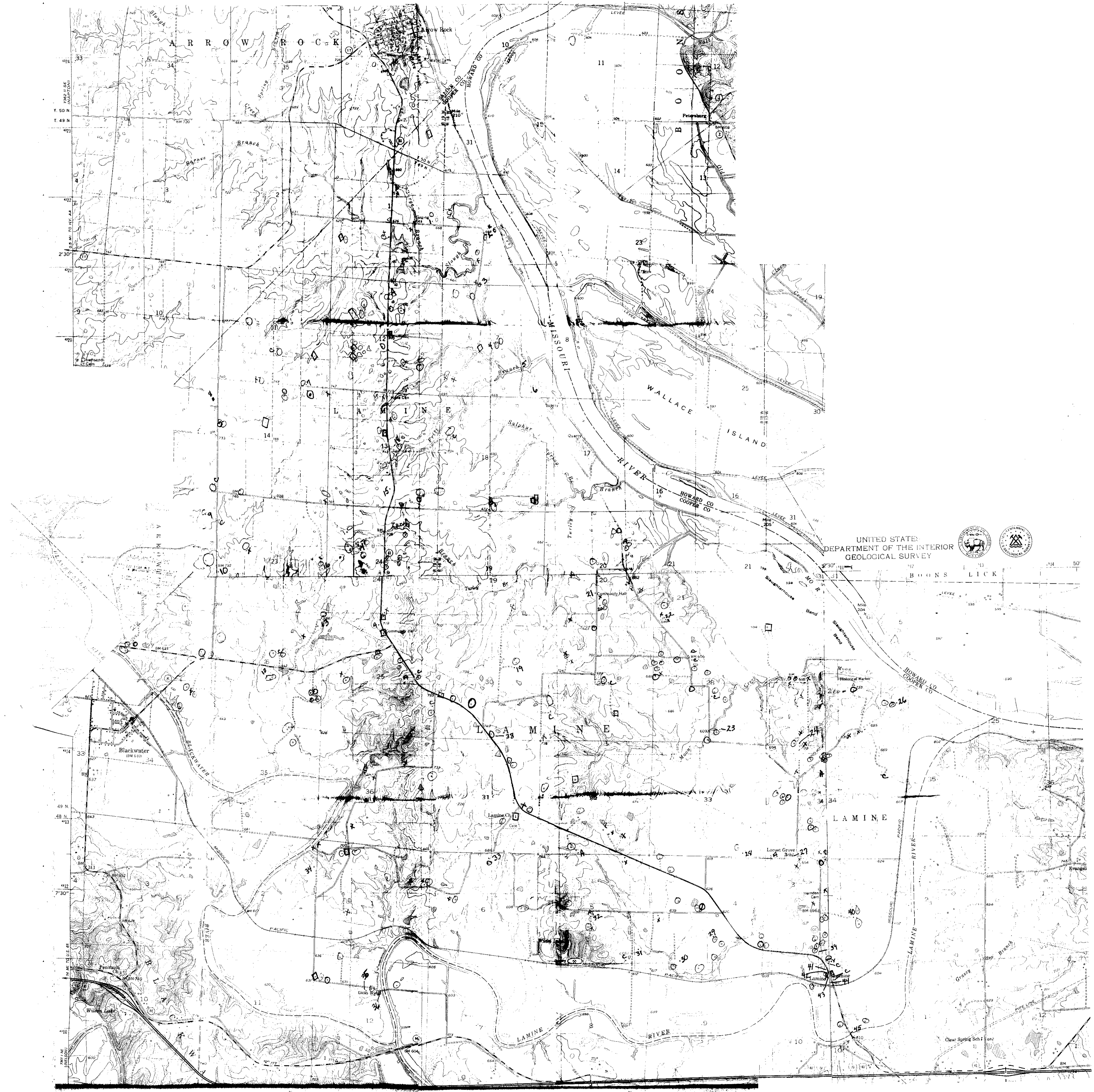


Kelly Township  
T46N + T45N  
R17W + R18W



Kelly Township, Cooper County, Missouri

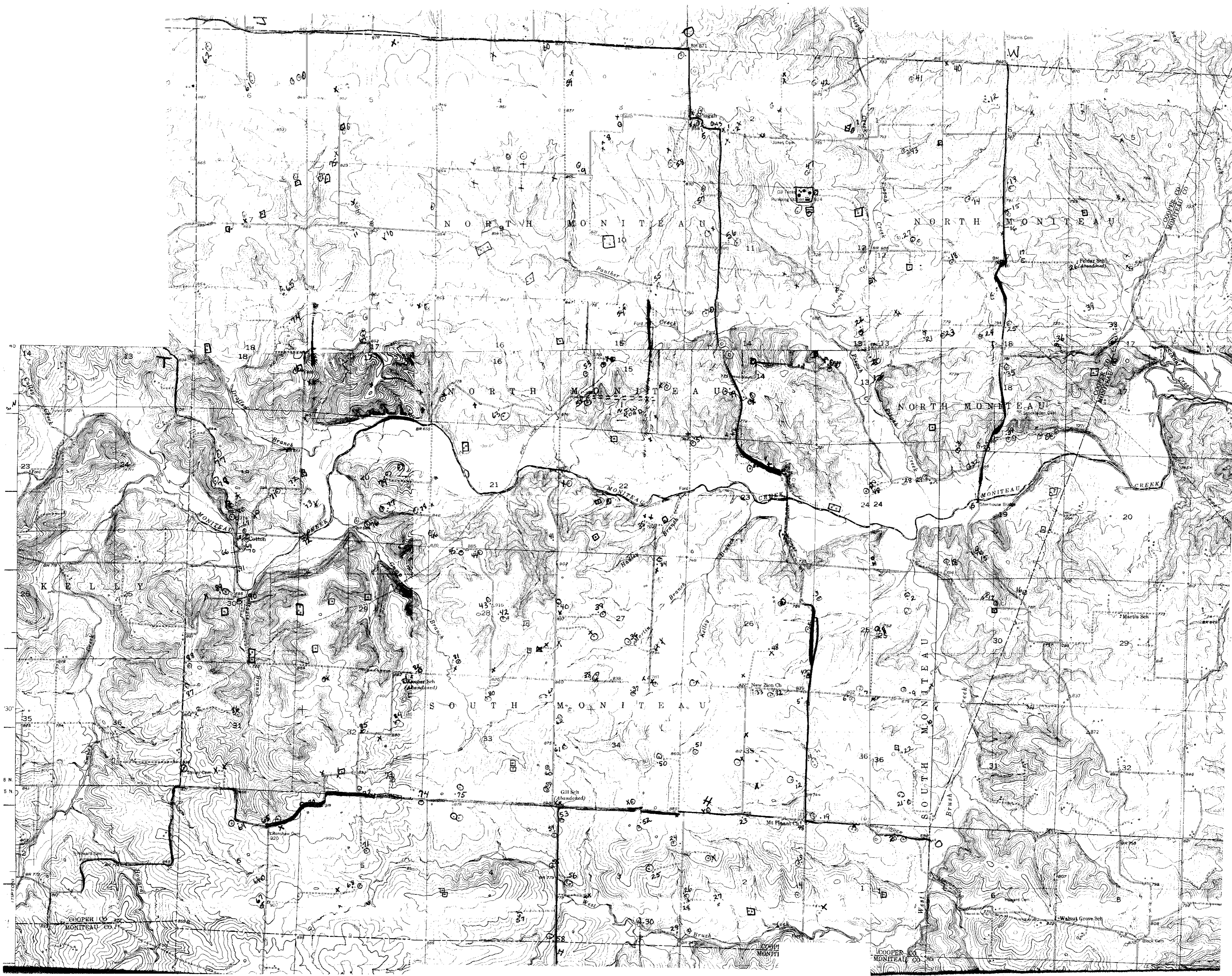
March + April, 1881

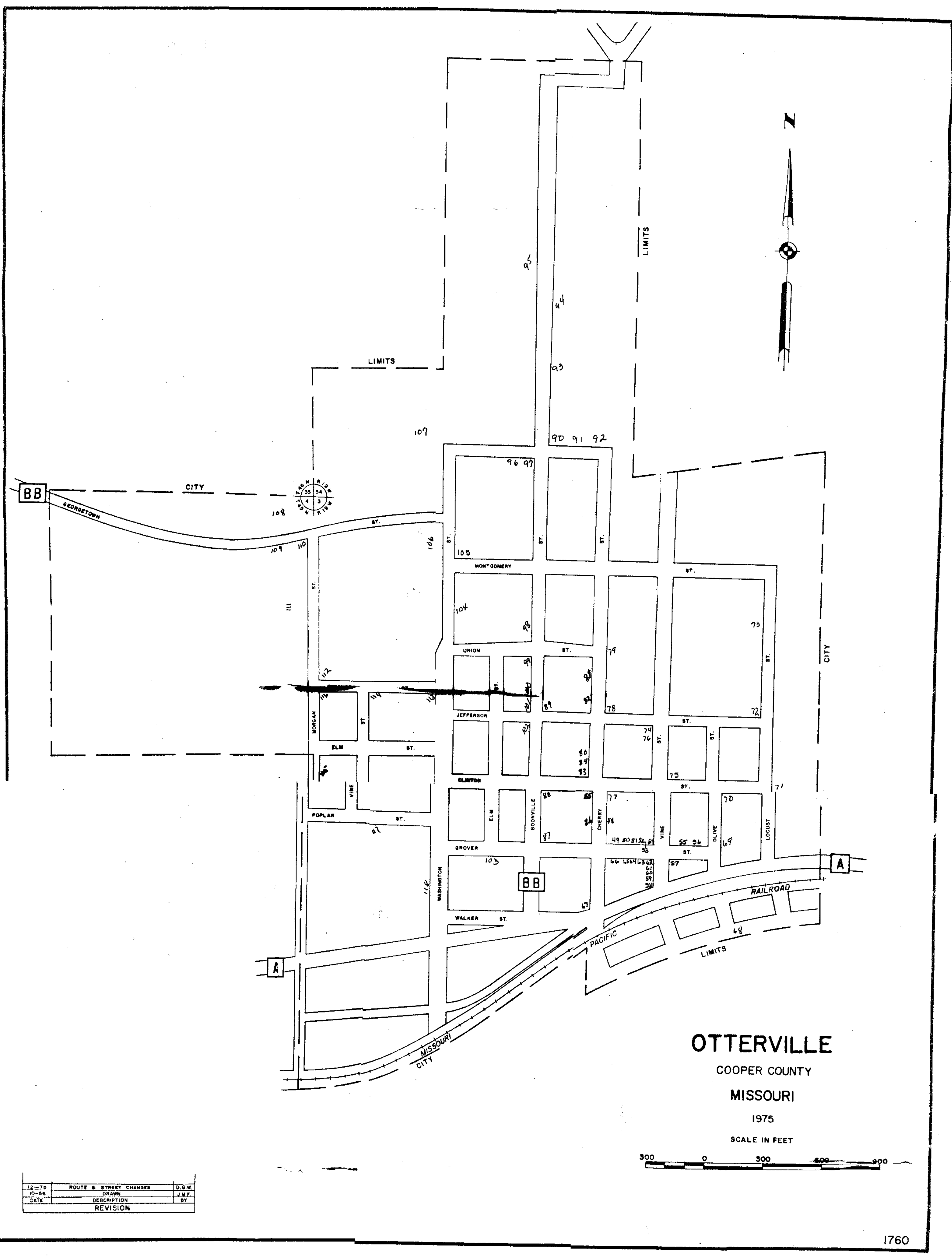


UNITED STATES  
DEPARTMENT OF THE INTERIOR  
GEOLOGICAL SURVEY

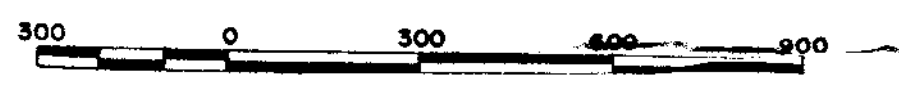


10 11 12 13 14 15 16 17 18 19 20 21 22 23 24 25 26 27 28 29 30 31 32 33 34 35





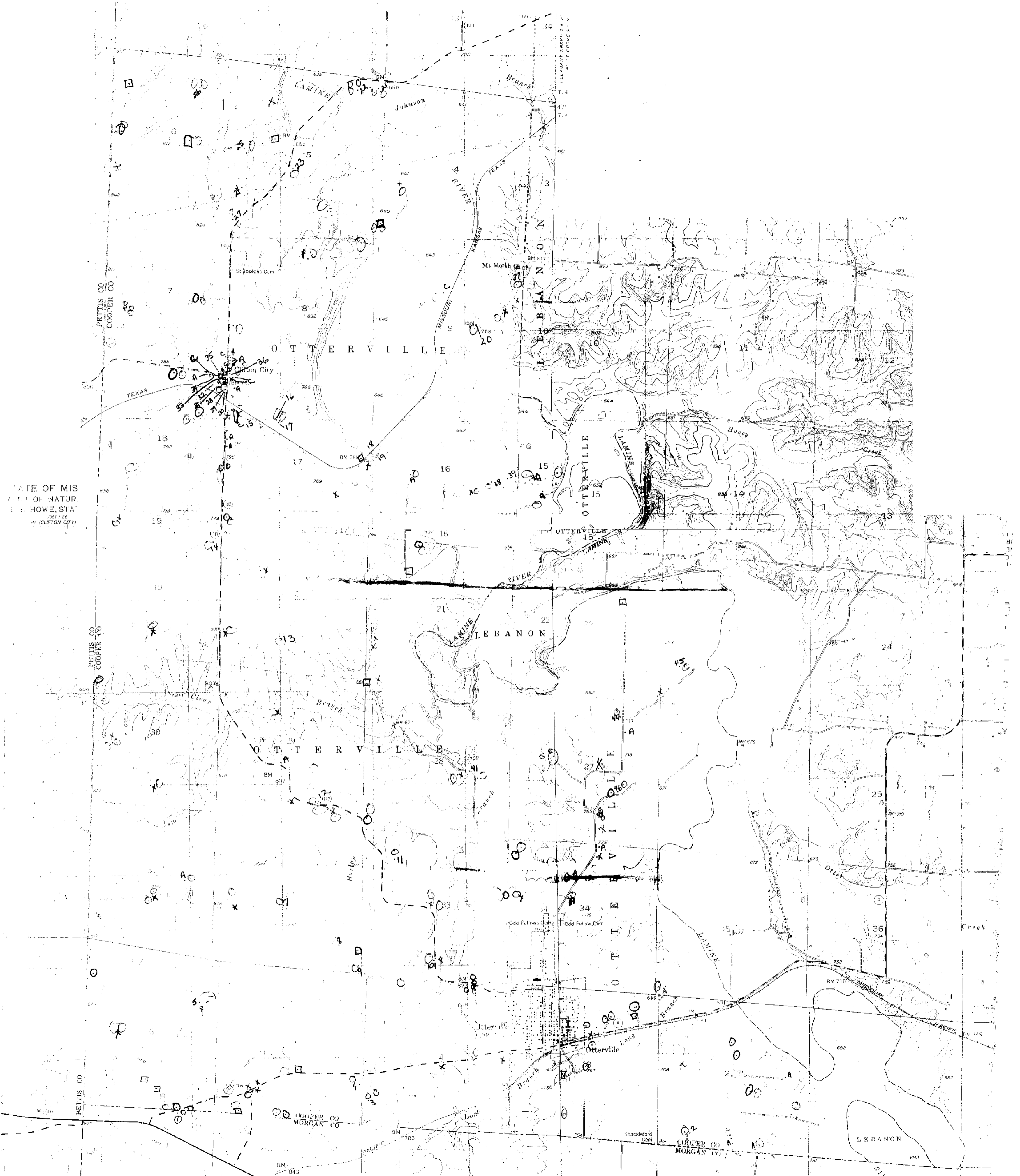
**OTTERVILLE**  
 COOPER COUNTY  
 MISSOURI  
 1975  
 SCALE IN FEET

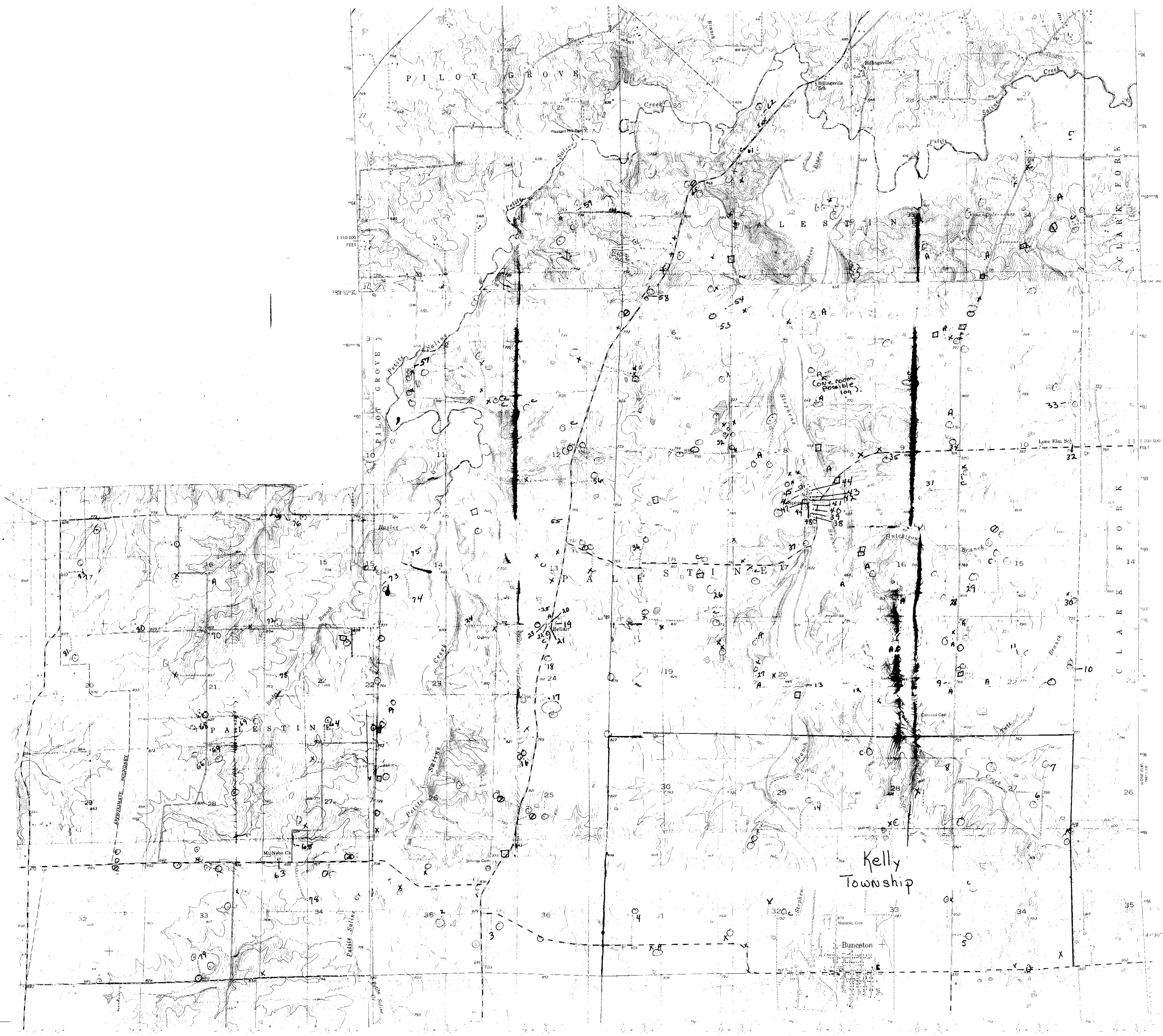


DATE	DESCRIPTION	BY
12-77	ROUTE A STREET CHANGES	D.S.W.
10-86	DRAWN	J.M.F.
	REVISION	

RD-5

STATE OF MISSOURI  
BUREAU OF NATURAL RESOURCES  
HOWE, STATE ENGINEER  
CLIFTON CITY





Kelly  
Township

PILOT GROVE

Bunceton

CLARK FORK

CLARK FORK

35

34

33

32

31

30

29

37

36

35

34

33

32

31

30

29

28

27

26

25

24

33

32

31

30

29

28

27

26

25

24

23

22

21

20

19

34

33

32

31

30

29

28

27

26

25

24

23

22

21

35

34

33

32

31

30

29

28

27

26

25

24

23

22

21

36

35

34

33

32

31

30

29

28

27

26

25

24

23

37

36

35

34

33

32

31

30

29

28

27

26

25

24

23

38

37

36

35

34

33

32

31

30

29

28

27

26

25

39

38

37

36

35

34

33

32

31

30

29

28

27

26

25

40

39

38

37

36

35

34

33

32

31

30

29

28

27

41

40

39

38

37

36

35

34

33

32

31

30

29

28

27

42

41

40

39

38

37

36

35

34

33

32

31

30

29

43

42

41

40

39

38

37

36

35

34

33

32

31

30

29

44

43

42

41

40

39

38

37

36

35

34

33

32

31

45

44

43

42

41

40

39

38

37

36

35

34

33

32

31

46

45

44

43

42

41

40

39

38

37

36

35

34

33

47

46

45

44

43

42

41

40

39

38

37

36

35

34

33

48

47

46

45

44

43

42

41

40

39

38

37

36

35

49

48

47

46

45

44

43

42

41

40

39

38

37

36

35

50

49

48

47

46

45

44

43

42

41

40

39

38

37

51

50

49

48

47

46

45

44

43

42

41

40

39

38

37

52

51

50

49

48

47

46

45

44

43

42

41

40

39

53

52

51

50

49

48

47

46

45

44

43

42

41

40

39

54

53

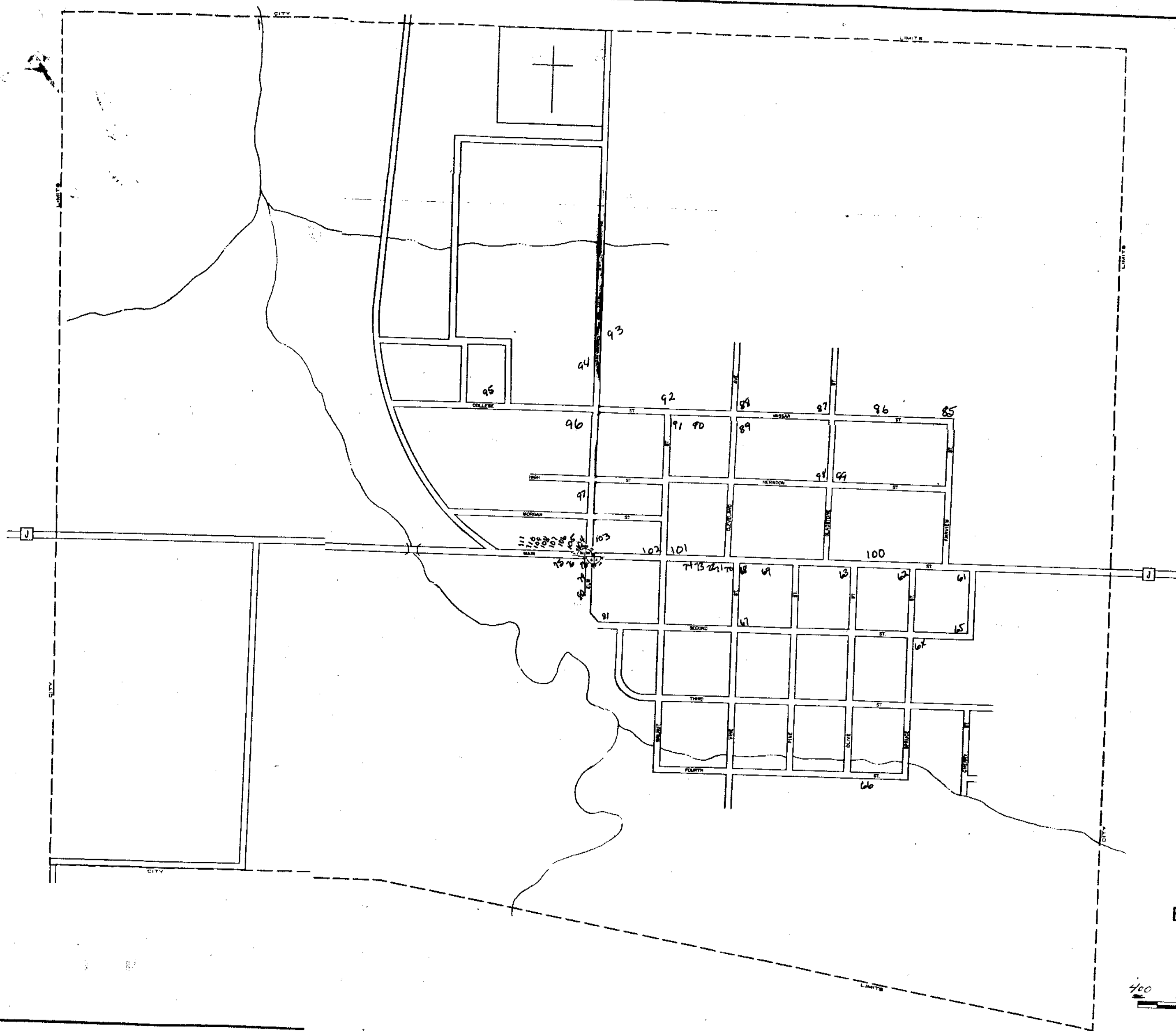
52

51

50

49

48



**BUNCETON**  
 COOPER COUNTY  
 MISSOURI

1975  
 SCALE IN FEET  
 400 800 1200

LEGEND  
 CITY LIMITS  
 WATER  
 STREETS



C L E A R C R E E K

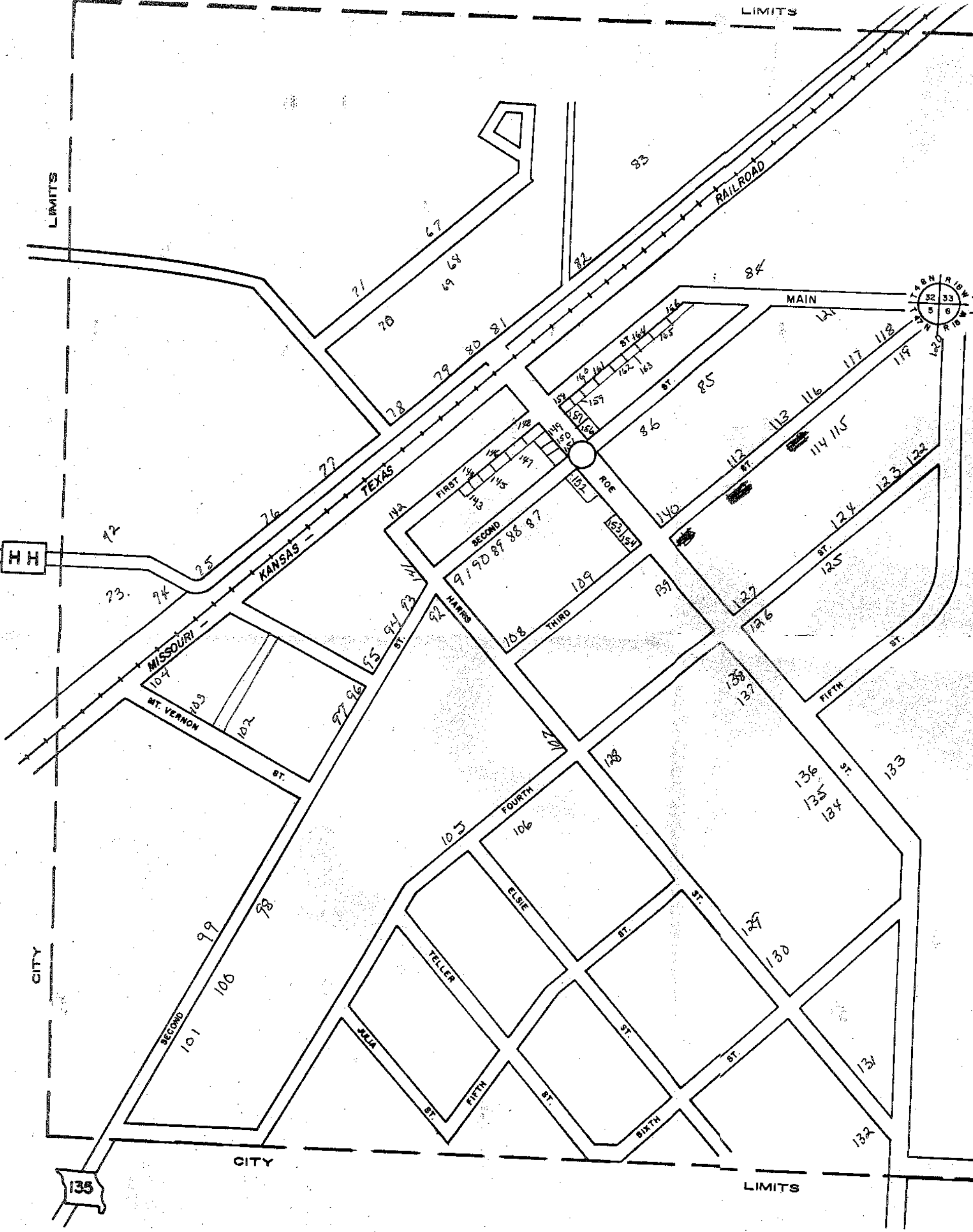
B

SCALE 1:24,000  
CONTOUR INTERVAL 10

CITY

LIMITS

LIMITS

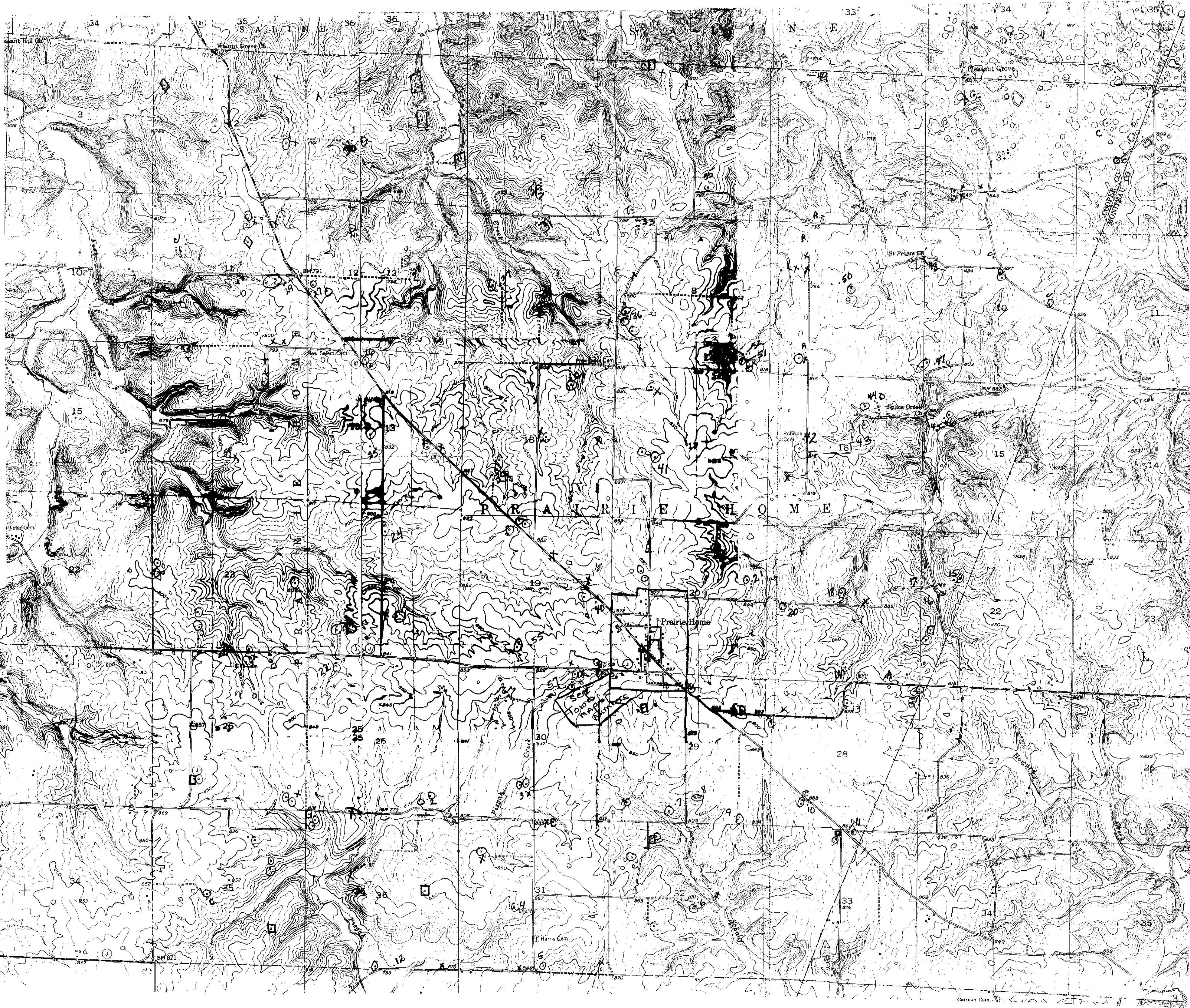


CITY

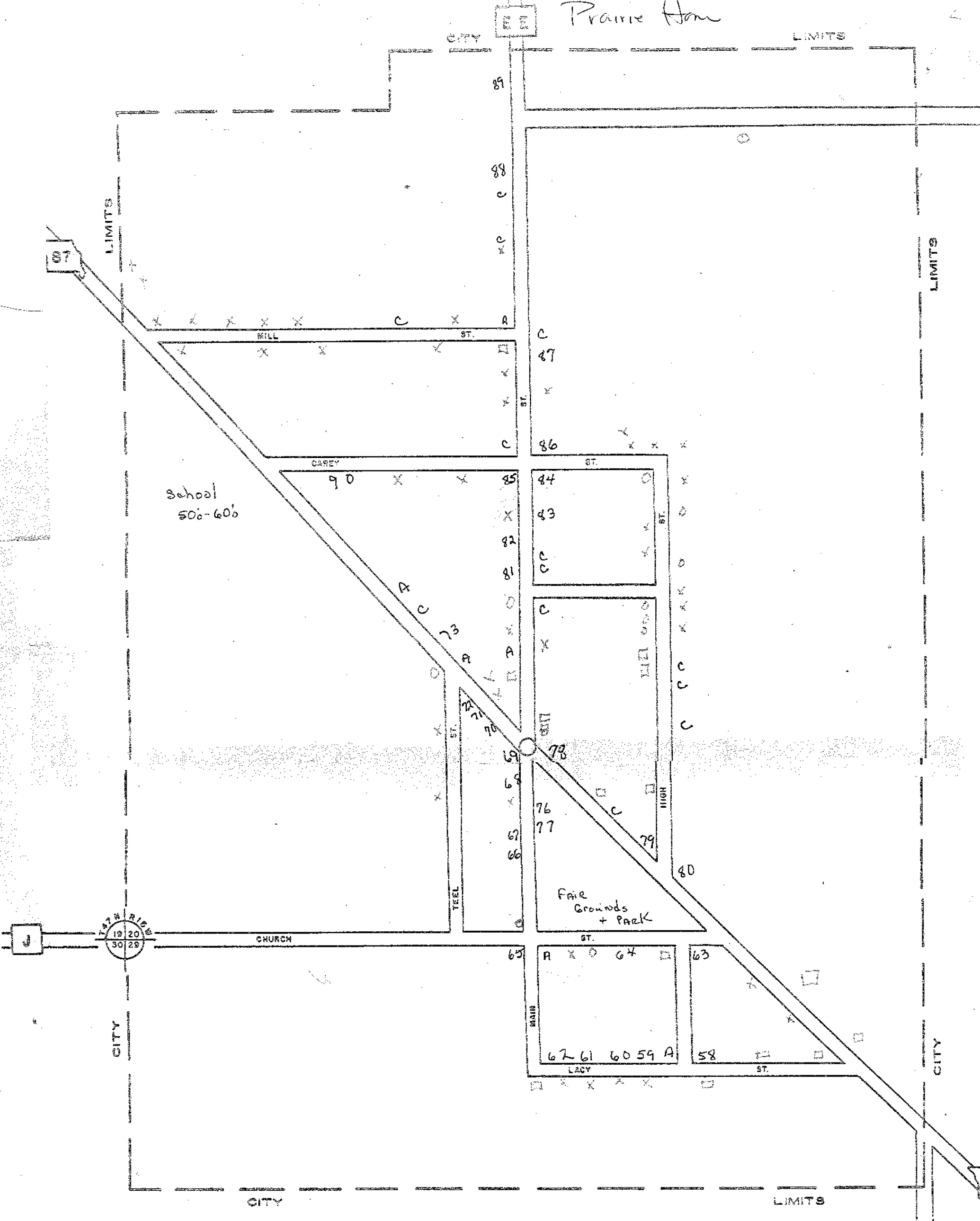
CITY

LIMITS

135



# Prairie Home



School  
500-600

Fair  
Grounds  
+ PARK

19 20  
30 29

87

LIMITS

LIMITS

LIMITS

CITY

CITY

CITY

CITY

LIMITS

