

**United States Department of the Interior
National Park Service**

**National Register of Historic Places
Registration Form**

1. Name of Property

historic name Schultz, Louis J., School (Preferred)

other names/site number Central High School

2. Location

street & number 101 S. Pacific Street [N/A] not for publication

city or town Cape Girardeau [N/A] vicinity

state MO code MO county Cape Girardeau code 031 zip code 63703

3. State/Federal Agency Certification

As the designated authority under the National Historic Preservation Act, as amended, I hereby certify that this
[x] nomination [] request for determination of eligibility meets the documentation standards for registering properties in the National
Register of Historic Places and meets the procedural and professional requirements set forth in 36 CFR Part 60. In my opinion, the
property [x] meets [] does not meet the National Register criteria. I recommend that this property be considered significant []
nationally [] statewide [x] locally.
(See continuation sheet for additional comments [])

Mark A. Miles

MAY 30, 2008

Signature of certifying official/Title Mark A. Miles/Deputy SHPO

Date

Missouri Department of Natural Resources
State or Federal agency and bureau

In my opinion, the property [] meets [] does not meet the National Register criteria.
(See continuation sheet for additional comments [])

Signature of certifying official/Title

State or Federal agency and bureau

4. National Park Service Certification

I hereby certify that the property is:

- [] entered in the National Register
See continuation sheet [].
- [] determined eligible for the
National Register
See continuation sheet [].
- [] determined not eligible for the
National Register.
- [] removed from the
National Register
- [] other, explain
See continuation sheet [].

Signature of the Keeper

Date

Property Name: Schultz, Louis J., School
Cape Girardeau County, Missouri

5. Classification

Ownership of Property	Category of Property	Number of Resources within Property	
		Contributing	Noncontributing
<input type="checkbox"/> private	<input checked="" type="checkbox"/> building(s)	<u>1</u>	<u>0</u> buildings
<input checked="" type="checkbox"/> public-local	<input type="checkbox"/> district		
<input type="checkbox"/> public-State	<input type="checkbox"/> site		_____ sites
<input type="checkbox"/> public-Federal	<input type="checkbox"/> structure		_____ structures
	<input type="checkbox"/> object		_____ objects
		<u>1</u>	<u>0</u> Total

Name of related multiple property listing.

N/A

Number of contributing resources previously listed in the National Register.

N/A

6. Function or Use

Historic Function

EDUCATION/school

Current Functions

EDUCATION/school

7. Description

Architectural Classification

LATE 19TH AND 20TH CENTURY REVIVALS/
Second Renaissance Revival

Materials

foundation BRICK
walls BRICK

roof ASPHALT
other TERRA COTTA
STONE/Limestone

Narrative Description

(Describe the historic and current condition of the property on one or more continuation sheets.)

Property Name: Schultz, Louis J., School
Cape Girardeau County, Missouri

8. Statement of Significance

Applicable National Register Criteria

A Property is associated with events that have made a significant contribution to the broad patterns of our history

B Property is associated with the lives of persons significant in our past.

C Property embodies the distinctive characteristics of a type, period, or method of construction or represents the work of a master, or possesses high artistic values, or represents a significant and distinguishable entity whose components lack individual distinction.

D Property has yielded, or is likely to yield, information important in prehistory or history.

Criteria Considerations

Property is:

A owned by a religious institution or used for religious purposes.

B removed from its original location.

C a birthplace or grave.

D a cemetery.

E a reconstructed building, object, or structure.

F a commemorative property.

G less than 50 years of age or achieved significance within the past 50 years.

Areas of Significance

ARCHITECTURE
EDUCATION

Periods of Significance

1915-1953

Significant Dates

1915
1919

Significant Person(s)

N/A

Cultural Affiliation

N/A

Architect/Builder

Foster, D. B.
J.H. Felt and Company
Vogelsang Brothers Construction Company

Narrative Statement of Significance

(Explain the significance of the property on one or more continuation sheets.)

9. Major Bibliographic References

Bibliography

(Cite the books, articles and other sources used in preparing this form on one or more continuation sheets.)

Previous documentation on file (NPS):

preliminary determination of individual listing (36 CFR 67) has been requested

previously listed in the National Register

previously determined eligible by the National Register

designated a National Historic Landmark

recorded by Historic American Buildings Survey

recorded by Historic American Engineering Record

Primary location of additional data:

State Historic Preservation Office

Other State Agency

Federal Agency

Local Government

University

Other:

Name of repository: _____

Property Name: **Schultz, Louis J., School**
 Cape Girardeau County, Missouri

10. Geographical Data

Acreage of Property 3 1/4 acres

UTM References

A. Zone	Easting	Northing	B. Zone	Easting	Northing
16	275740	4131520			

C. Zone	Easting	Northing	D. Zone	Easting	Northing

[x] See continuation sheet

Verbal Boundary Description

(Describe the boundaries of the property on a continuation sheet.)

Boundary Justification

(Explain why the boundaries were selected on a continuation sheet.)

11. Form Prepared By

name/title Ruth Keenoy, Karen Bode Baxter and Terri Foley

organization Karen Bode Baxter, Preservation Specialist date March 7, 2008

street & number 5811 Delor St. telephone 314-353-0593

city or town St. Louis state MO zip code 63109

Additional Documentation

Submit the following items with the completed form:

Continuation Sheets

Maps

A **USGS map** (7.5 or 15 minute series) indicating the property's location.

A **Sketch map** for historic districts and properties having large acreage or numerous resources.

Photographs

Representative **black and white photographs** of the property.

Additional Items

(Check with the SHPO or FPO for any additional items)

Property Owner

(Complete this item at the request of SHPO or FPO.)

name The Cape Girardeau Public School System c/o Pat Fanger, Interim Superintendent of Schools

street & number 301 N. Clark St. telephone 573-335-1867

city or town Cape Girardeau state MO zip code 63701

United States Department of the Interior
National Park Service

National Register of Historic Places Continuation Sheet

Schultz, Louis J., School (Preferred)
Cape Girardeau County, MO

Section number 7 Page 1

Narrative Description

Summary

The original Central High School, known commonly as the Louis J. Schultz School, is located at 101 S. Pacific Street, in Cape Girardeau (Cape Girardeau County), Missouri. It combines the original, 1915, three story (plus basement), flat roofed, red brick, concrete framed, school building with a flanking two story wing of similar design added on the north side and finished in 1919. The original building has a linear plan, paralleling and facing east onto Pacific Street. Originally the 1919 arts wing was a separate building, slightly separated from the earlier building and its layout focused on the entry and stair vestibule centered on its façade, with rooms radiating off this central core. Behind the 1919 wing is a 1942 shop wing situated partially below grade. This wing was later converted into a cafeteria (as it is today). Located south of the downtown and university campus, Schultz School is just one block south of Independence Street, a major commercial thoroughfare that extends from the Mississippi River to the west across the south end of the community. The school property extends from Pacific to Benton, midblock in a residential area, facing the intersection with Merriwether Street. Designed in the Second Renaissance Revival style, the school retains its architectural integrity, especially on the exterior. A glazed terra cotta cornice and limestone coursing separate the building into three distinct horizontal bands. The building has two glazed terra cotta projecting and colonnaded entry vestibules on the face and south end. Complimentary glazed terra cotta entablature surrounds are visible on the façade entry of the arts wing at the north end of the complex. Carthage limestone forms the belt courses, column bases and entry steps. In 1964, the school was renamed Louis J Schultz School. During this period, renovations upgraded the building systems, including the only alteration to the exterior, the replacement of the windows and doors. These were replaced with aluminum framed units installed within the original openings. This was typical for many school systems, including Cape Girardeau's schools, almost all of which have this same treatment. On the interior, the floorplan remains basically unaltered, although the 1964 renovations included a tiny addition for an additional stairway to connect the 1915 and 1919 wings, as well as the conversion of the original cafeteria and auditorium (which had burned in a fire in 1958) into additional classrooms. In 1989 planning began to make the school accessible with the elevator addition finished in 1991 directly on top of the one story entry to the 1964 stairwell. It was designed with similar brick walls and continuous limestone coursing to visually blend, as well as physically connect, the two historic sections of the building at the façade.

United States Department of the Interior
National Park Service

National Register of Historic Places Continuation Sheet

Schultz, Louis J., School (Preferred)
Cape Girardeau County, MO

Section number 7 Page 2

Narrative Description

Exterior Features

The east façade of the school is divided into two separate elements, the original 1915, three story, symmetrical school façade and the 1919, two story, symmetrical façade of the arts wing. The wings share some basic elements of their Second Renaissance Revival design, including: flat parapeted roofs, red brick walls, symmetrical fenestration patterns flanking the central entries, and horizontal banding created by the pronounced limestone belt courses and projecting glazed terra cotta cornices. Small round limestone details highlight the entablatures that separate each window bay and define the corners of the building.

The original 1915 building (See Photo #1) at the south end is divided into five vertical bays, with broad window openings in each bay. The horizontal banding is located above the first and third floor windows as continuous lintels, along with paired narrower limestone stringcourses below the first floor, one of which is the continuous first floor window sill. The upper two floors have limestone sills within the window openings. Both end bays as well as the central bay project slightly, with a window between floor levels (because of the stairwell inside) above the projecting vestibule in the central bay. The one story flat roofed, brick, entry vestibule projects in front of the central bay. This vestibule has its own entablature with a terra cotta cornice matching that of the main building cornice, including the dentils. Above the cornice is a decorative cartouche. The entablature surrounds all three sides of the vestibule and its base rests on the stylized capitals of brick pilasters at each corner, with fluted, terra cotta, Tuscan columns toward the interior on the façade flanking the recessed, glazed, ribbed, terra cotta door surround with three tiered, shallow limestone steps spreading across the vestibule façade.

In contrast, the smaller, two story, 1919 arts wing on the north end (Photo #2) is only divided into three vertical bays, with a projecting central entry bay. Since it is only two stories tall on the façade, the paired limestone banding is located below the first floor windows, one serving as the continuous sill. There is a broader limestone band, a continuous second floor lintel that serves as the base for the entablature that matches the three story wing, except that the terra cotta cornice is simpler, without dentils. The entry to this wing, centered in the projecting bay on the façade is framed by a glazed, ribbed terra cotta surround capped by a projecting cornice with dentils supported by flanking modillions. The shallow, tiered concrete, entry steps span across the entry bay and now connect with the north facing door to the elevator vestibule that connects the 1919s wing to the 1915 wing on the façade.

United States Department of the Interior
National Park Service

National Register of Historic Places Continuation Sheet

Section number 7 Page 3

Schultz, Louis J., School (Preferred)
Cape Girardeau County, MO

Narrative Description (continued)

The three story elevator addition (See Photos #1 and 2) finished in 1991 is built with matching brick, with a one story section (from the 1964 renovations) tiered back into a two story section for the north facing entry vestibule. Both wings have flat roofs and simple limestone banding. The parapets of both sections are capped by these terra cotta bands, with an additional band connecting into, and matching in detail, the continuous second floor lintel of the 1919 wing. An additional narrow limestone course blends into the lower belt course on the 1915 wing. The limestone parapet cap over the one story entry continues as a course over the first floor windows of the 1915 wing. The elevator only serves the basement through second floor levels, so the roofline is below that of the original 1915 building. The two story section of its entry vestibule is below the cornice line of the two story 1919 wing. Kept simple in design, it does an excellent job of blending together the major elements of both wings.

The south elevation of the school continues the same detailing as the façade of the 1915 school. It also has a matching, one story, projecting entry vestibule (See Photos #1 and 6), but this vestibule is not quite as deep. It also has the same entablature, cartouche, columns, and tiered steps as the façade entry vestibule. The south elevation is divided into four vertical bay divisions, with a two story height recessed brick frieze in the east bay spanning what elsewhere are the second and third floor window bays. Below, the first floor is a simple brick wall in this bay. The next bay projects slightly, serving as the entry bay with a window between floor levels (because of the stairwell inside) above the projecting vestibule. The rear two bays have window openings similar to those on the façade. There are basement level windows since the rear of the property slopes downhill, exposing part of the basement wall. There is also a small brick retaining wall extending out from the back edge of the entry vestibule that supports the sidewalk at the north end of the school. A set of concrete steps leads down to the lower part of the lot.

The north end of the school (See Photos #2 and 3) continues the same treatments of the 1919 façade on that wing with two vertical window bays. Like the south end, there are basement level windows since the slope of the land exposes part of the basement walls.

Behind the 1919 wing is the one story brick shop building added in 1942 (See Photo 3), with its floor level partially below grade. This section of the building was converted to the cafeteria during the 1964 renovations. This accounts for the five aluminum framed window bays with abstract design colored plexiglass panels on the north elevation and the one additional matching window bay on the back, west elevation. In 1992, a portion of its brick parapet and the roof collapsed and had to be rebuilt.

United States Department of the Interior
National Park Service

National Register of Historic Places Continuation Sheet

Section number 7 Page 4

Schultz, Louis J., School (Preferred)
Cape Girardeau County, MO

Narrative Description

Behind the shop building is a projecting one and one half story, flat roofed, brick heating plant wing built in 1934 (See Photos #3 and 4). This is approximately within the same footprint as the 1915 heating plant that spans across the back, south half, of the 1919 wing and connects to the north wall of the 1915 wing. This wing has a simple, stepped brick parapet with a concrete cap and a simple limestone stringcourse. The limestone course connects to the lower stringcourse that surrounds the 1915 building below the first floor windows. It has symmetrically placed window bays, all of the same dimension on the upper floor, with the half floor below being without openings except for the doorways on the south side. There are six window bays on its north side, three on the rear (west) side and two on the south side. Like all other windows in the building, it has replacement aluminum window units.

The rear, west elevation of the 1919 wing (See Photo #4) is primarily a simple brick wall with an attached brick chimney flue between the northern two bays. There are only three windows on this elevation, one small unit on the second floor of the north bay and two, vertically aligned windows on the first and second floor of the central bay. The cornice returns on both ends of the elevation and the continuous limestone sill course at the first floor continues onto this elevation. Otherwise, the only adornment is the continuous of the simple terra cotta parapet cap.

Because of the slope of the land, the rear of the 1915 wing, facing west, is a full four stories in height (three floors plus the basement) (See Photo #4). The elevation is divided into three major vertical divisions, with a fifth story projection in the broad, central bay. This central bay contains attic windows capped by a simple cornice, a broken extension of the main building cornice that extends onto this elevation, as do the limestone belt courses. Within this bay, which is divided into four bays by projecting brick piers, are window openings on the first through attic floor levels. There are no openings on the ground level (basement), where the gymnasium is housed. The first floor windows served the gymnasium and what was originally a track around its perimeter inside. The roof extension in this area was needed for the auditorium which was housed on the upper two levels above the gymnasium. To either side of this central bay, there are simple recessed brick friezes in the section that elsewhere have the second and third floor window units. Its lower levels are basically unadorned brick walls with the exception of tiny windows next to simple egress doors at the basement level that hug the central bay. Vertically aligned above these doors are small window openings on all three levels.

Created by the connector across the front between the 1915 and 1919 wings, the area between the heating plant, and the 1915 north elevation, is a small lightwell or courtyard accessible from the first floor. It has a metal framed canopy over a portion of this space and is surrounded by the windows of the adjacent wings.

United States Department of the Interior
National Park Service

National Register of Historic Places Continuation Sheet

Section number 7 Page 5

Schultz, Louis J., School (Preferred)
Cape Girardeau County, MO

Narrative Description

Interior Features

The interior retains most of its original layout. A linear hall in the 1915 wing behind the offices/classrooms extends along the east side of the building. This hallway connects to intersecting hallways near both ends of this wing that extend to the back where the restrooms are located. The area between these secondary halls is a distinctive space on all levels:

- the basement and first floor level is the gymnasium which historically had doorways accessing from the main hall on the first floor to the track/wrap-around balcony level (See Photo #10)
- the second floor is a large library (See Photo #11)
- the third floor and attic level were historically an auditorium, but after the 1958 fire this was converted to classrooms, although the raised wooden floor height is still evident in this area on the third floor level

In addition, the 1915 wing retains its original stair shafts, one centered on the east façade and one on the north end of the building. Both were updated with rubber treads and mosaic half wall railing features in 1964 and more recently closed off to the third floor since it is no longer in use. The 1919 wing also retains its stair shaft and original wood balustrade on top of its half wall railings, although some of these half wall railings are now clad in newer square ceramic tiles.

In addition to the layout, the interior retains the original back band, mitered corner, wood trim with simple plinth blocks around the doors and the half light, single panel wood doors. Most of the hall doors are transomed. Secondary doors, as well as those on the shorter height third floor, do not have transoms. The library retains its distinctive entry with transomed doors flanking a transomed, window with a fixed panel. Although the suspended track is missing, the gymnasium retains its original painted brick walls and wood floors. The 1964 renovations replaced the wood floors with terrazzo throughout most of the building, installed new lockers, added modern tile wainscoting, and lowered the ceilings with suspended acoustical tile and light grids, as well as created a new staircase between the two wings. Although new aluminum windows were installed at that time, the openings were not modified since the original windows also had plaster wall returns without interior trim. In addition, the fourth floor, unused for many years, appears to retain its original hallway, brick wainscoting, wood chair rails. Also intact are two original paneled doors and trim, wood floor, brick with wood cap half wall stair railing, and a large skylight.

United States Department of the Interior
National Park Service

National Register of Historic Places Continuation Sheet

Section number 7 Page 6

Schultz, Louis J., School (Preferred)
Cape Girardeau County, MO

Narrative Description

Alterations and Integrity Issues

The building retains its imposing, original, Second Renaissance Revival styling and exterior finishes on the exterior – even though the 1964 renovations included replacement of all of the windows and entry doors. Earlier additions and alterations all date from within the period of significance, including a replacement heating plant constructed in 1934 and a shop (later cafeteria) wing constructed in 1942. The additions were located on the rear of the building, without altering the appearance of the school's façade. In 1964, an additional staircase was positioned in the connector added between 1923 and 1931 (between the 1915 and 1919 wings). This was a necessary alteration so that all floor levels could be reached via a single and readily accessible staircase. The 1991 elevator addition on top of the front portion of this connector did not drastically alter the exterior appearance of the façade since it was discretely designed to blend both materials and detail.

The 1964 renovations also replaced some of the decorative interior features of the building, but left intact the original hallways and classroom configurations as planned originally. Simple cosmetic changes were made to the interior stairwells by cladding the half wall railings with mosaic tiles, changing the worn-out wooden floors for terrazzo finishes, and adding dropped acoustical tile ceilings (but leaving the original plaster ceilings intact, if hidden from view). The renovations did not alter certain key interior decorative features. Most notably, the original doors and transoms were left intact as were original interior window openings with their plaster wall returns. Although these alterations included changing some classroom configurations, these consisted primarily of partition walls (many originally installed) to accommodate increasing/decreasing student demands without permanently altering the rooms. No permanent revisions were made to the original floor plan during the 1960s. The cafeteria and auditorium were shifted into areas originally constructed for other purposes, but the primary walls were not altered. The only major loss was due to a fire and the large auditorium space was rebuilt as classroom space in the 1964 renovations. Even so, access to the upper level of the auditorium remains intact--in fact those hallways and stairwells were not cosmetically changed in 1964. There is physical evidence of historic finishes for the future renovation planned for the lower levels.

Schultz School does not retain original windows and doors. These features were replaced in the mid-1960s when the school was renovated for use as a seventh grade facility; and this appears to have been the case throughout the city's school district. (Noted in comparisons with the public schools still standing today in the table that follows). The city's schools were remodeled at some point in time following their construction; most had replacement windows and doors installed (similar to those at Schultz School) during the 1950s and 1960s. The only two schools that do not currently exhibit similar windows to those at Schultz School are Lorimer School, constructed in

United States Department of the Interior
National Park Service

National Register of Historic Places Continuation Sheet

Schultz, Louis J., School (Preferred)
Cape Girardeau County, MO

Section number 7 Page 7

Narrative Description

1937 (presently used as Cape Girardeau's city hall and courthouse) and Old Jefferson School, constructed in 1904. The windows in the former Lorimer School are replacement sashed windows designed with muntins (ca. 1980). The windows in Old Jefferson School are boarded over and/or missing; although a few one-over-one original windows remain. This latter school has been vacant for many years. The building's style and construction date provide a very different architectural context than that associated with Schultz School.

Name of School	Construction Date	Location	Current Ownership	Other Information
Old Jefferson	1904 – opened 1905	731 Jefferson Street	Private	“Abandoned” – in poor condition.
(West) Broadway	1906; opened 1907	937 Broadway	Private	Converted for use as medical arts building in 1954
Washington	1914	621 N. Fountain Street	Southeast Missouri State University	No longer used as a school
May Greene	1921	1000 Ranney Street	Private	Current -- House of Hope Ministry
Franklin (West End)	1927	215 N. Louisiana	City of Cape Girardeau	Currently used for grades 1 thru 5
Lorimer School	1937	401 Independence Street	City of Cape Girardeau	WPA school; converted for use in 1978 as City Hall
New Central High School	1952	205 Caruthers Avenue	City of Cape Girardeau	Currently used as junior high school
New Jefferson School	1957	520 S. Minnesota Avenue	City of Cape Girardeau	Currently used for grades 1 thru 5.

In comparing schools that had similar construction dates as Schultz School, both Washington and May Greene Schools have similar architectural features. Constructed in 1914 and 1921, respectively, these schools exhibit exterior brick and terra cotta features similar to Schultz School, and both were remodeled in the mid-1960s. The May Greene School is small – one story in height -- whereas Washington and Schultz are three stories in height. Franklin School, constructed in 1927, features mid-century replacement doors and windows, as does West Broadway School, constructed in 1906. These alterations are also similar to those at Schultz School.

Schultz School, the original high school in Cape Girardeau, has no major additions that are visible on the street front. Only the small elevator/stairwell was added after the period of significance. Because window replacement is a common feature throughout the city's school system, and since the historic decorative details still dominate the façade, this change does not adversely affect the architectural and historical integrity of the building. Today Schultz School continues to clearly illustrate its original use as the city's high school.

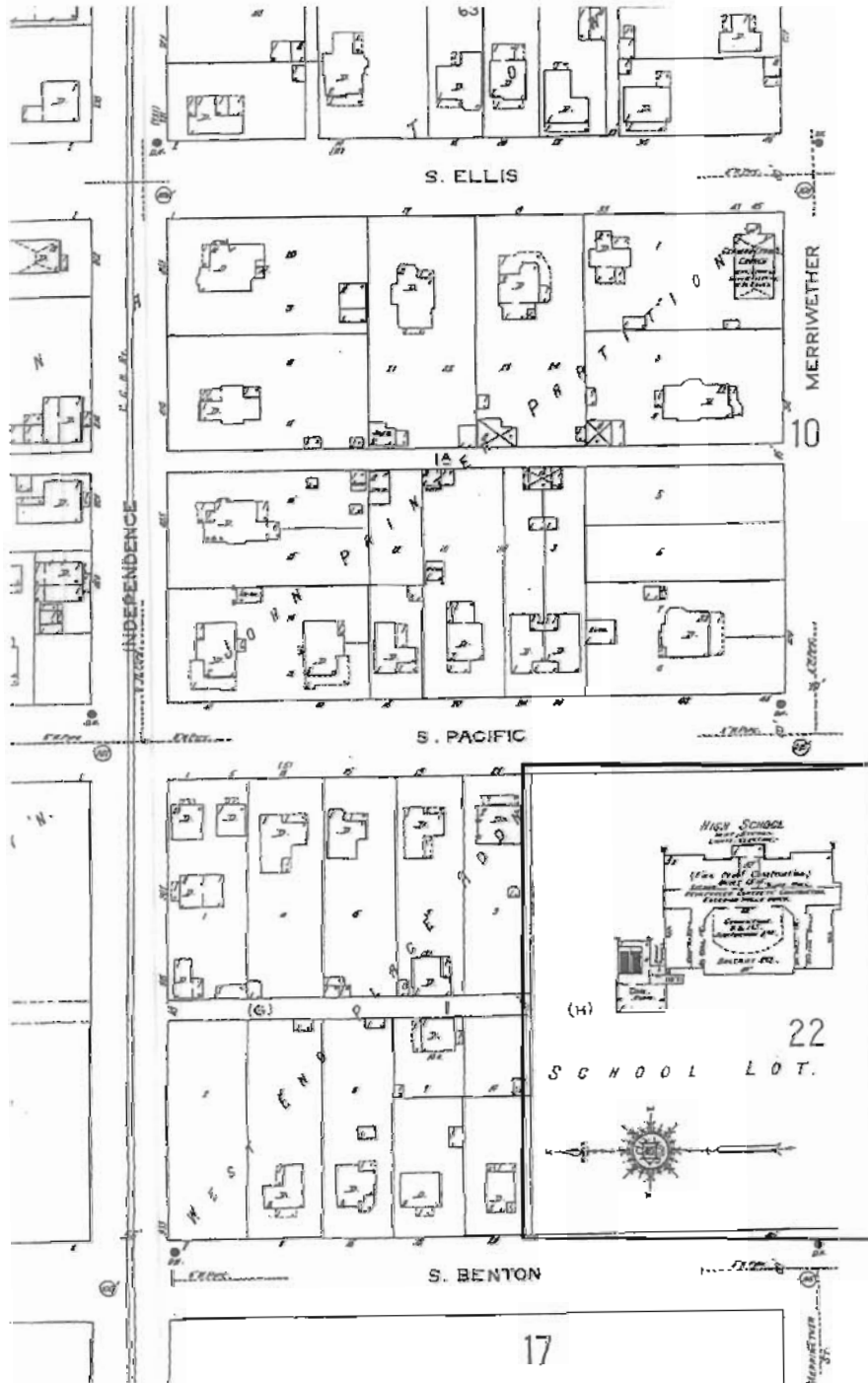
United States Department of the Interior
National Park Service

National Register of Historic Places Continuation Sheet

Schultz, Louis J. School (Preferred)
Cape Girardeau, MO

Section number 7 Page 9

Sanborn Fire Insurance Map, 1915



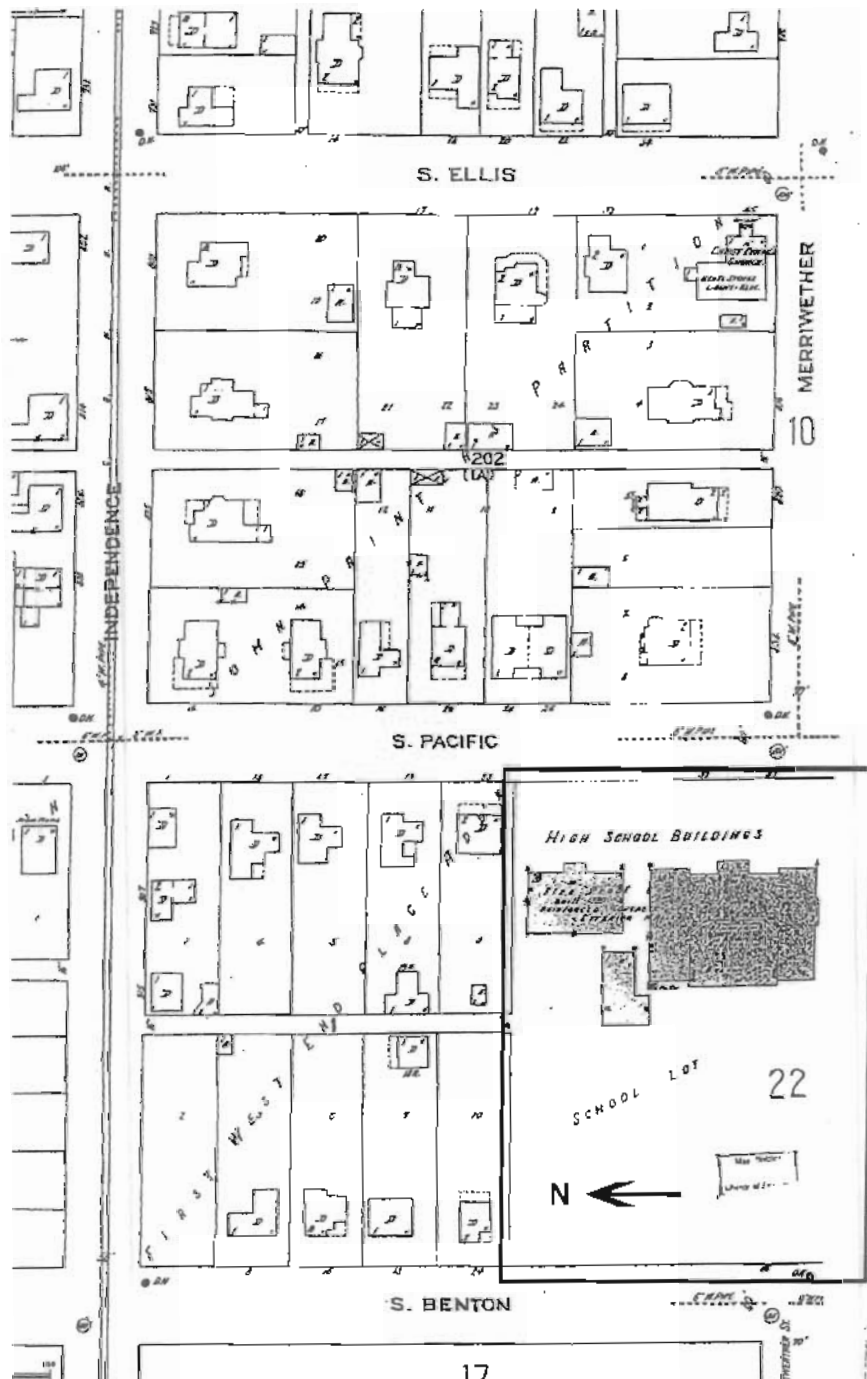
United States Department of the Interior
National Park Service

National Register of Historic Places Continuation Sheet

Schultz, Louis J. School (Preferred)
Cape Girardeau, MO

Section number 7 Page 10

Sanborn Fire Insurance Map, 1923



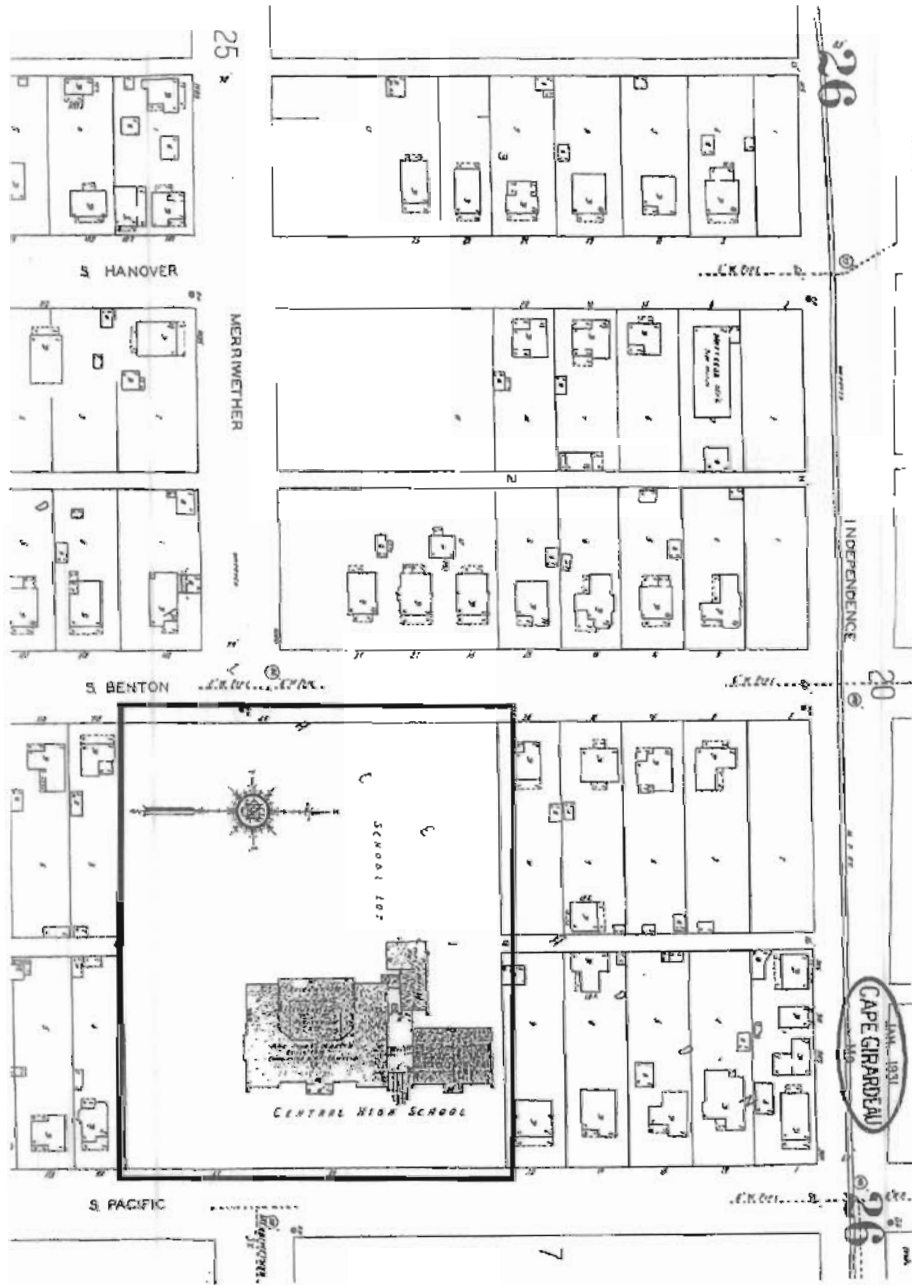
United States Department of the Interior
National Park Service

National Register of Historic Places Continuation Sheet

Section number 7 Page 11

Schultz, Louis J. School (Preferred)
Cape Girardeau, MO

Sanborn Fire Insurance Map, 1931



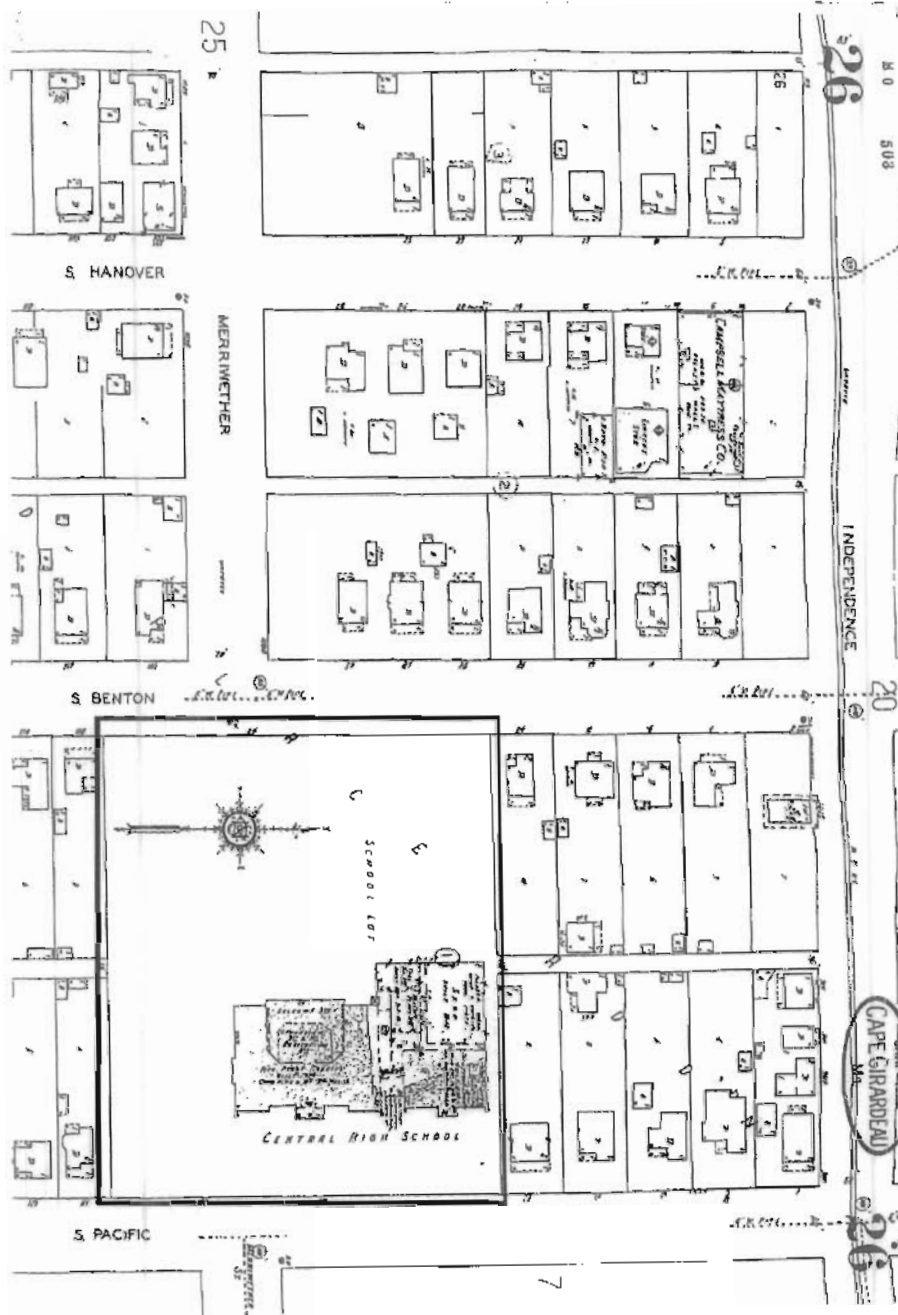
United States Department of the Interior
National Park Service

National Register of Historic Places Continuation Sheet

Schultz, Louis J. School (Preferred)
Cape Girardeau, MO

Section number 7 Page 12

Sanborn Fire Insurance Map, 1950



United States Department of the Interior
National Park Service

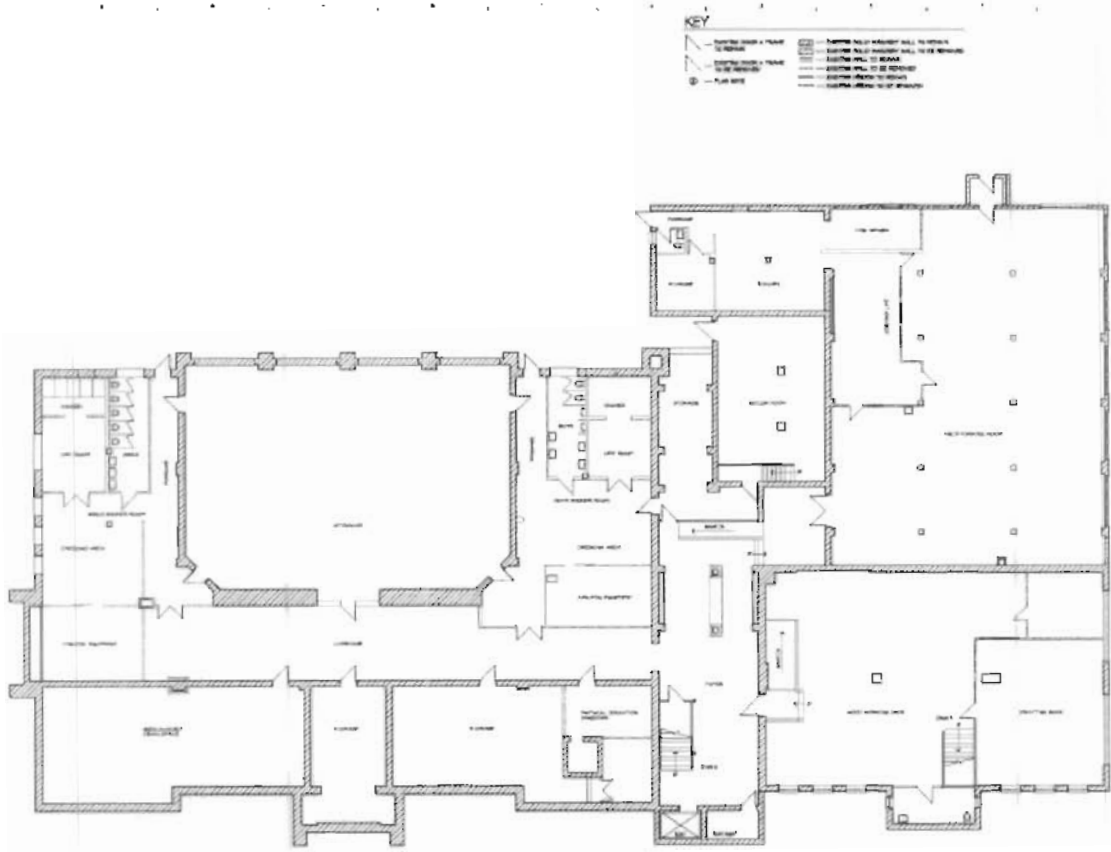
National Register of Historic Places Continuation Sheet

Section number 7 Page 13

Schultz, Louis J. School (Preferred)
Cape Girardeau, MO

Plans Provided by Stark Wilson Duncan Architects, Inc.

Current Lower Level Plan



A6 LOWER LEVEL DEMOLITION FLOOR PLAN
SCALE: 1/4" = 1'-0"



SCHULTZ SCHOOL SENIOR APARTMENTS
101 S. PACIFIC STREET
CAPE GIRARDEAU, MISSOURI 63703
STARK WILSON DUNCAN ARCHITECTS, INC.
1000 W. GARDNER STREET, SUITE 100
CAPE GIRARDEAU, MISSOURI 63703



LOWER LEVEL DEMOLITION FLOOR PLAN
DATE: 6.29.2007
REVISED:

PROJECT NO. 0714
D1.0

United States Department of the Interior
National Park Service

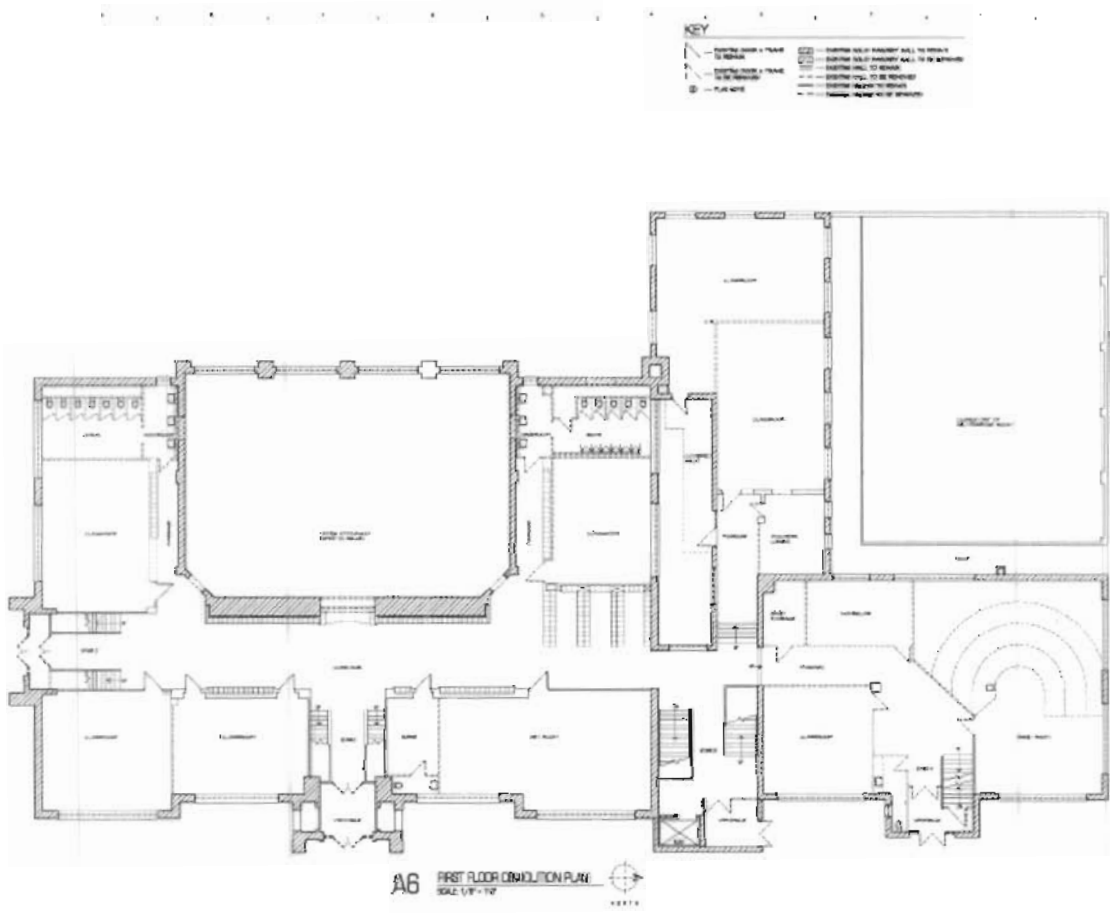
National Register of Historic Places Continuation Sheet

Section number 7 Page 14

Schultz, Louis J. School (Preferred)
Cape Girardeau, MO

Plans Provided by Stark Wilson Duncan Architects, Inc.

Current First Floor Plan



SCHULTZ SCHOOL SENIOR APARTMENTS
 101 S. PACIFIC STREET
 CAPE GIRARDEAU, MISSOURI 63703

NO ADDED WORK
 FIRST FLOOR
 DEMOLITION PLAN
 1/25/2007
 HYDEMAN

PROJECT NO. 1242
D1.1

United States Department of the Interior
National Park Service

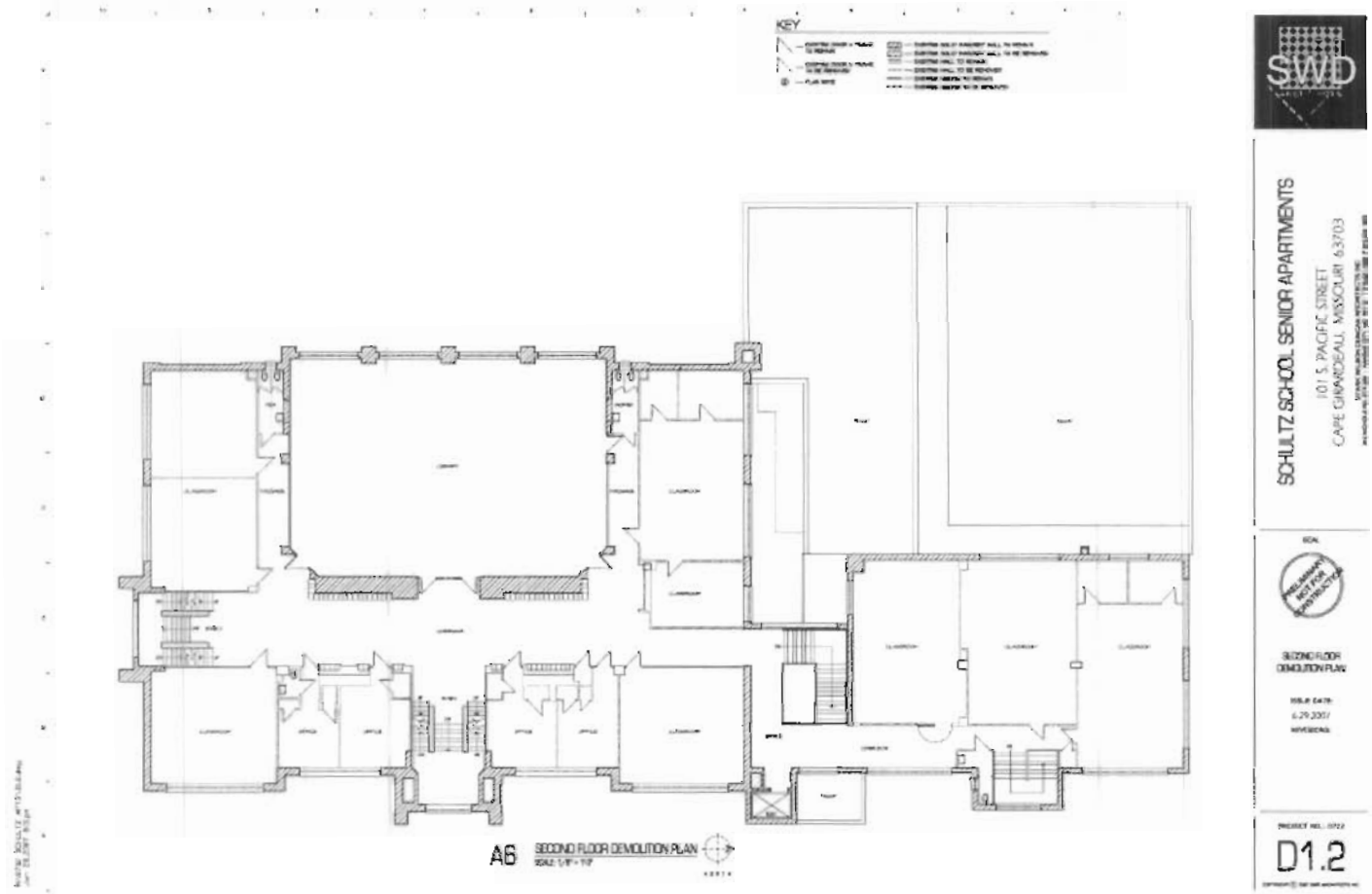
National Register of Historic Places Continuation Sheet

Section number 7 Page 15

Schultz, Louis J. School (Preferred)
Cape Girardeau, MO

Plans Provided by Stark Wilson Duncan Architects, Inc.

Current Second Floor Plan



United States Department of the Interior
National Park Service

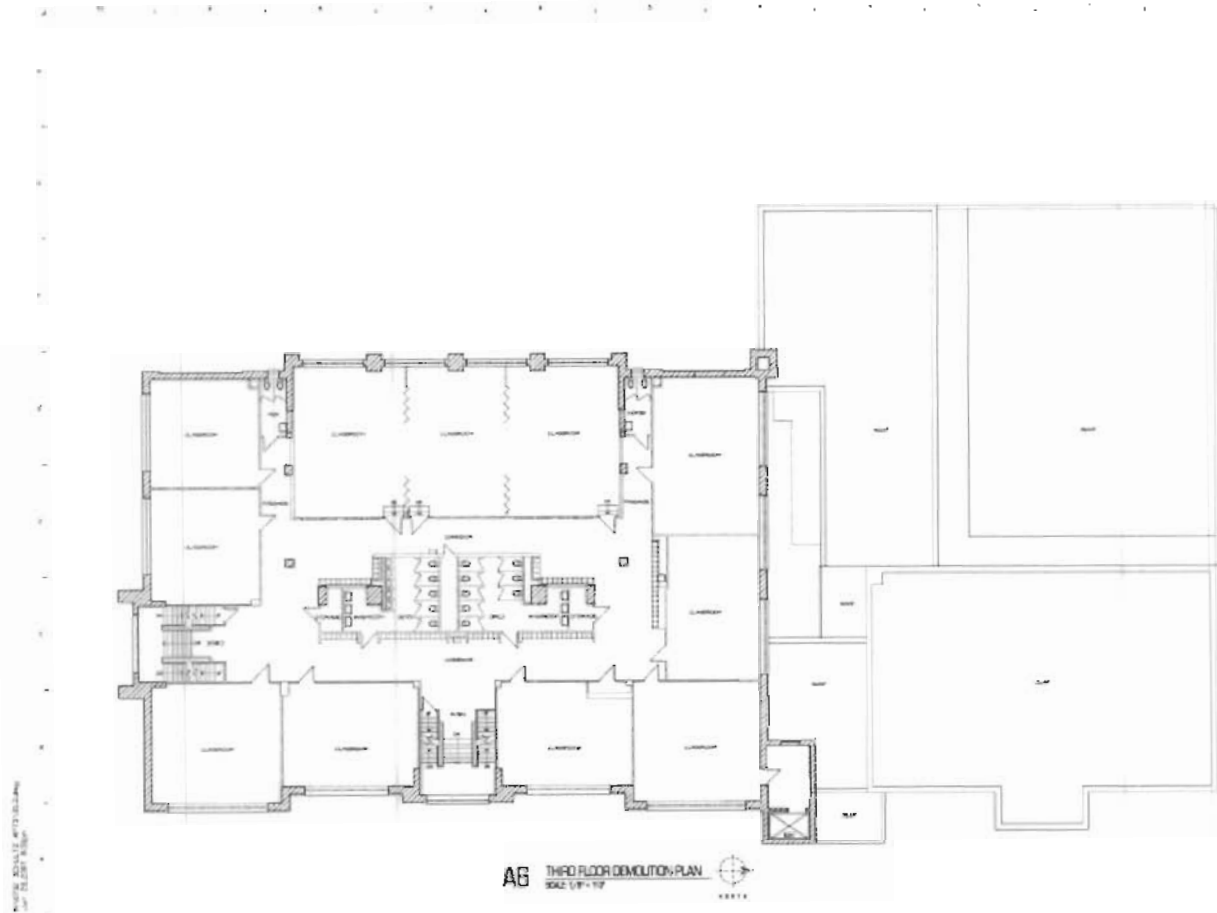
National Register of Historic Places Continuation Sheet

Section number 7 Page 16

Schultz, Louis J. School (Preferred)
Cape Girardeau, MO

Plans Provided by Stark Wilson Duncan Architects, Inc.

Current Third Floor Plan



SCHULTZ SCHOOL SENIOR APARTMENTS
 101 S. PACIFIC STREET
 CAPE GIRARDEAU, MISSOURI 63703
STARK WILSON DUNCAN ARCHITECTS, INC.
 1000 W. BROADWAY SUITE 1000 ST. LOUIS, MISSOURI 63102



**3RD FLOOR
 DEMOLITION PLAN**
 FILE DATE:
 6.29.2007
 WSD/MS

PROJECT NO. 0107
D1.3

A6 THIRD FLOOR DEMOLITION PLAN
 SCALE: 1/8" = 1'-0"
 6/29/07

United States Department of the Interior
National Park Service

National Register of Historic Places Continuation Sheet

Section number 8 Page 17

Schultz, Louis J., School (Preferred)
Cape Girardeau County, MO

Narrative Statement of Significance

Summary

Located at 101 South Pacific Street, the three-story, Louis J. Schultz School (preferred) was the original Central High School for the city of Cape Girardeau (Cape Girardeau County), Missouri. The building was in use as the public high school from its construction in 1915 until 1953, when the new Central High School on Caruthers Avenue replaced it. The original high school building continued to be used as a public school afterward; initially as a junior high school, then as a seventh grade center, and most recently as a school for alternative education classes. When the former high school was designated in 1964 as a seventh-grade attendance center, it was renamed for the building's first principal and retired school superintendent, Louis J. Schultz. To avoid confusion with the other (newer) Central High School, the preferred name is the Louis J. Schultz School, which has been in use locally since that time. The period of significance extends from 1915, the year that the building was completed, through 1953 when the property was no longer used as a high school. The property is eligible for the National Register of Historic Places (NRHP) under Criterion A (Education) as the first public high school constructed in Cape Girardeau, despite the fact that the city established its public school system in 1867. The building's construction is indicative of the statewide trend during the early twentieth century to provide public high schools in addition to grammar schools for the children of Missouri. Schultz School is eligible under Criterion C (Architecture) as a significant public building design by architect D. B. Foster of J. H. Felt and Company (St. Joseph, Missouri). The firm worked closely with local residents to provide a design that was not only modern and functional but also impressive. The building has only one addition, designed and completed by Felt and Company in 1919 due to the rapid increase in the high school's student population. Although the interior of Schultz School was modified in 1964 to support its new use, the original interior floor plan, hallways, and overall design remain intact. Schultz School is a significant contribution to Cape Girardeau's public school system and an excellent example of an early twentieth-century high school facility.

Public Education and the Development of Public High Schools in Missouri

Missouri's educational history began long before the territory became a state in 1821. Most historical resources identify the state's first school as that established in St. Louis by Jean Baptiste Trudeau, nephew of the territory's Spanish governor, Don Zenon Trudeau, in 1774.¹ Trudeau's school was open only to boys, and all lessons were conducted in French. In 1797, a girl's school opened in St. Louis, taught by Madame Maria Josepha Piconneau dit Rigauche.² St. Louis was not the only settlement in Missouri to establish early schools. In 1793, Thomas Jacob began teaching both boys and girls in New Madrid, which also established an English-speaking

United States Department of the Interior
National Park Service

National Register of Historic Places Continuation Sheet

Section number 8 Page 18

Schultz, Louis J., School (Preferred)
Cape Girardeau County, MO

school as early as 1802. An even earlier English-speaking school in Mount Tabor (near present day Cape Girardeau) opened shortly after the settlement was established in 1795.³ Although Missouri's early schools were eclectic, they did share one essential commonality – education was provided only to those who could afford to pay for instruction.

In 1808, Missouri's Territorial Legislature "legally organized" St. Genevieve Academy, the state's first "public" school. The academy taught French and English, and free classes were offered to "poor and Indian children."⁴ Although not a true public school as we know today (the academy was funded through private donations), the school paved the route to Missouri's public school system. St. Genevieve Academy offered educational opportunities for all children – even those who could not afford to pay.⁵ Shortly afterward in 1812, Missouri became a "Special Territory." As such, the territory was required by Congress to establish "schools and means of education" for all residents.⁶ However, few advances were made in the realm of public education even after Missouri gained statehood in 1821. Although the state's first constitution (drafted in 1820) provided stipulations for establishing schools, it offered no means for communities to financially support public schools.⁷

When Missouri became a state, Congress required that the new state set aside land, roughly 1,254,200 acres, for "school purposes."⁸ The land was to be sold and the money invested for schools. Because the state lacked any form of central control over its schools, and taxation remained a local (not a state) issue, this provision had little impact on improving public education.⁹ In 1835, Henry S. Geyer began drafting Missouri's School Act (a.k.a. The Geyer Act of 1839). Although Geyer's ideas took years to reach fruition, his plan established a permanent form of state funding for schools and "outlined a system of education" based on Thomas Jefferson's "philosophy of education."¹⁰ In 1853, a series of legislative acts based on Geyer's recommendations were passed, which set aside one-quarter of the state's revenue toward school development. It created the position for a state school superintendent and provided a set of standards for school curriculum and textbooks.¹¹

Missouri's legislative efforts in 1853 promised a great future for the state's public school system, but a series of events thwarted the progress. The Civil War diverted all public funds and most schools in Missouri closed – many never re-opened. Rapid social changes swept the nation after 1865. Rapid population growth (primarily through immigration), industrialization (which required education and training), and social movements (increasing demands for free educational opportunities) rendered Missouri's previous educational reforms "obsolete before the system was established."¹² To remedy the situation, the state passed the "Parker Laws" in 1867. Named for State School Superintendent, T. A. Parker (appointed to the office in 1865), this legislation utilized taxation to fund schools, incorporated standards for qualified teachers, and guaranteed "free" education to "every inhabited portion of the State."¹³

United States Department of the Interior
National Park Service

National Register of Historic Places Continuation Sheet

Section number 8 Page 19

Schultz, Louis J., School (Preferred)
Cape Girardeau County, MO

Missouri's public high schools began to take shape after the Civil War; most evolved from academies. Academies such as that established at St. Genevieve in 1808 were private institutions funded through tuition fees and donations. Some received public lands from the state to use for free schools, intended to educate those who could not afford tuition. A few communities in Missouri, such as Potosi, supported academies through lotteries. By 1830, the state held chartered academies in Jackson, Potosi, St. Charles, St. Mary's, Boonville, Fayette, Franklin, and Louisiana. Approximately thirty years later in 1861, the state supported more than one hundred academies. After the Civil War, the academy began to gradually lose favor. Social reforms demanded free education for all and, as a result, communities across the nation began to build more public schools.¹⁴

The transition of the academy to the high school in Missouri was a gradual process spurred by several factors. Federal and state intervention, though limited, encouraged the establishment of public schools and free education for all children. Throughout the state, a "communal clamor" began that called for communities to support education for "all children regardless of economic ability to support the school."¹⁵ As such, local communities had little option other than to establish taxes to support schools. Because parents paid for public schools through tax levies, they opted to send their children to schools that they already paid for (through taxes) rather than paying additional tuition fees at an academy.¹⁶ Public schools received state and local funds, which meant that most could offer better salaries to teachers. As a result, many teachers opted to work in public schools, rather than academies. Because teachers in public schools were required to be certified through state-approved programs, students received equal or better educational opportunities through local high schools.¹⁷ These events drew students and their tuition away from academies and few could afford to operate as they had in the past. "The old Academy was always more or less an aristocratic institution in its support and patronage . . . the Academy [eventually] had to give way to a more democratic institution" which was the public high school.¹⁸

In 1853, St. Louis established the state's first high school – Central High School. Many communities in Missouri were slow to accept high schools. Residents, particularly those in rural areas, felt that colleges and universities should prepare students who wished to continue learning and bear the costs for doing so. In the nineteenth century, it remained the responsibility of local communities to decide whether or not they wanted high schools. They alone bore the burden of the costs since the state did not initially provide funding. After the Civil War, Michigan, Illinois, Indiana and Wisconsin all required that communities establish public high schools.¹⁹ The movement was further strengthened by an 1874 Supreme Court decision, *Stuart vs. Kalamazoo*, which ruled "that when the majority of citizens voted in favor" of raising taxes to support its schools, it was "entirely within" the community's right to do so.²⁰ Missouri began to follow suit. In 1889, the state supported 28 communities with four-year high schools; 38 with three-year high schools; and 65 with two-year high schools. These numbers jumped considerably by 1909 to 115 four-year institutions; 40 three-year schools; and 77 two-year high schools.²¹

United States Department of the Interior
National Park Service

National Register of Historic Places Continuation Sheet

Section number 8 Page 20

Schultz, Louis J., School (Preferred)
Cape Girardeau County, MO

Missouri began to accredit high schools in 1903. High schools were classified by the number of years that students were required to attend. For example, a “first class” school was a four-year high school; a “second class” school was a three-year high school, etc. Also in 1903, the state introduced minimum requirements for the course work that must be completed before students could graduate. State accreditation mandated the minimum length of time that students must attend school annually, and required that schools employ at least one “approved teacher in high school work.”²² A decade later, the state passed another series of educational laws, including two aimed at developing high schools in all Missouri communities, the Wilson-McRoberts and Buford-Colley Laws. The Wilson-McRoberts Law provided financial assistance to develop “approved” high school programs and the Buford-Colley Law provided that rural high schools be established so that students could attend schools near their homes. Although critics viewed these laws as “adding to” rather than “solving” Missouri’s educational shortcomings, the legislation did provide critical funding necessary for many communities to build their first high schools.²³

Secondary School Development in Cape Girardeau, 1867 – 1964

As noted previously, an early academy, Mount Tabor, was established near Cape Girardeau around 1795. The first documented school in Cape Girardeau’s town limits opened at about the same time in 1800 when classes were taught in a “log house near the present site of the St. Charles Hotel.”²⁴ Early schools in Cape Girardeau mirrored those throughout the territory – most operated either as subscription schools or were established by religious organizations. In 1838, St. Vincent’s Young Ladies Academy opened on Spanish Street. St. Vincent’s parish played an integral role in Cape Girardeau’s early educational system and after the Civil War (in 1877) it also established a grade school on Spanish Street. This latter school was directed by the Congregation of Priests of the Mission, who organized St. Vincent’s College (incorporated in 1843) and St. Vincent’s Male Academy (1838), also in Cape Girardeau.²⁵ Other academies that operated prior to the Civil War were the Cape Girardeau Academy (1843) and Washington Female Academy (1848), both of which held classes in the “old Ellis Hotel building northwest of the Broadway-Lorimer intersection.”²⁶ The Cape Girardeau Male & Female Academy opened during the early 1860s. These institutions “gained quite a reputation over Southeast Missouri and functioned well until closed by the Civil War.”²⁷

With the exception of St. Vincent’s Young Ladies Academy and a school associated with Trinity Lutheran Church (established in 1854), none of Cape Girardeau’s antebellum schools re-opened. In 1867, when Cape Girardeau instituted a public school system, many residents objected to using tax money to construct public schools. As a result, private schools remained the primary institutions in the city’s educational hierarchy throughout the nineteenth century. Notable institutions established after the war include a girls’ school that held classes in a home on Washington Avenue beginning in 1870. This school is credited with laying the groundwork for Cape Girardeau’s Normal School, established in 1873 (that later evolved as Southeast Missouri State University). During this era, two parochial elementary schools also opened, St. Vincent’s

United States Department of the Interior
National Park Service

National Register of Historic Places Continuation Sheet

Section number 8 Page 21

Schultz, Louis J., School (Preferred)
Cape Girardeau County, MO

Grade School (1877) and St. Mary's Grade School (1882) at the intersection of Sprigg and William Streets.²⁸

Cape Girardeau's public school system was created to comply with the state's Parker Laws, which legalized the use of a tax base to support public schools. As noted, many citizens, primarily local businessmen, did not agree that local taxes should fund public school construction. As a result, Cape Girardeau's first public school classes were held in the basement of the local Presbyterian Church, located at Broadway and Lorimer Street. School attendance grew slowly but steadily. Finally, in 1871, construction began on the city's first public school building, (Old) Lorimer School. The facility was constructed by D. F. Tiedeman for \$15,000, and designed by E. D. Baldwin.²⁹ When supporters approached the new building one day prior to the school's official opening in 1872, "they found an armed guard in front of the building, intent on keeping classes from being held."³⁰ The demonstration exhibited the continuing displeasure of many concerning the use of taxes to support public schools.

Until 1908, Cape Girardeau's public schools taught only grades one through eight; the City did not support high school level classes. Many parents believed that the Normal School (established in 1873) provided sufficient secondary-level classes, and construction of a public high school would be a waste of taxpayers' money. The Normal School, which evolved into what is today Southeast Missouri State University, played an integral role in Cape Girardeau's secondary level education. Prior to 1908, the school served as the sole facility of "secondary character" in Cape Girardeau.³¹ It failed to provide free education to all, however, as guaranteed by the state's Parker Laws of 1867. In 1908, the City therefore began to offer public high school classes at Lorimer School, by which time the Normal School had moved into its new building completed in 1875.³² The City's first public high school graduating class held four students: Cecil Lorenz, Mayme Pickens, Ethel Masterson, and Gladys Wellborn. A graduation ceremony was held for the students at the First Presbyterian Church on May 22, 1912.³³

High school classes at Lorimer School quickly expanded and in 1911, the city introduced a bond issue to fund construction of a high school building. The measure failed to pass. In 1913, the state instituted a series of educational laws, two of which provided funds for the construction of high schools across the state. Following this action, Cape Girardeau again introduced a bond issue to construct a public high school and fund improvements for existing schools. This time, the bond issue passed. Its success was spurred in part by the glaring fact that communities across the state, many smaller than Cape Girardeau, had outdone the city in providing financial support for public education.³⁴

The proposed high school was to be constructed on the "Pacific Street school lot," donated to the city by the Lorimer family in 1820. At that time, a deed restriction designated that the property be used only for construction of a "public school." The lot remained vacant for nearly a century. Earlier attempts to convert the site for use by the Normal School were denied in 1890 when the

United States Department of the Interior
National Park Service

National Register of Historic Places Continuation Sheet

Section number 8 Page 22

Schultz, Louis J., School (Preferred)
Cape Girardeau County, MO

Missouri Supreme Court overturned a quit claim filed in 1873. The court's decision clearly stated that because the Normal School was a "state school" and not a "public school," the lot could not be utilized by the institution.³⁵ At last, almost a century later, plans were finally underway to build a public school on Pacific Street. It seemed only fitting that the former Lorimer parcel serve as home to Cape Girardeau's first public high school building, a use certainly acceptable under the deed requirement.

By April 1913, an architect had been selected to design the new high school, D. B. Foster of J. H. Felt and Company, St. Joseph, Missouri. Vogelsang Brothers Construction Company of Cape Girardeau was hired to oversee construction of the project.³⁶ The cornerstone of the new school was laid on March 20, 1915, at which time citizens presented a Bible (representing morality), a copy of the school's "course of study" (representing the city's public schools) and a copy of *The Republican Industrial* journal (preserving the city's "historical record"). The items were added to the "center of the stone" that bore the building's name, "Central High School . . . date of erection, 1914."³⁷ In attendance at the cornerstone ceremony were school board members and "several prominent citizens" including school and board officials from the Normal School, the City's public schools superintendent Robert Nunn, and "several young ladies of the high school."³⁸

The new school opened in October 1915, at which time 250 students (grades eight through twelve) moved from Old Lorimer School to the new Central High School on Pacific Street. When the students arrived on Friday, October 22, workmen remained busy inside the building, adding the finishing touches, and much of the school's equipment was yet to be installed. Despite the lack of full accommodations, students, parents, and teachers were enthusiastic. The school was reported to have the most modern heating system for any Missouri school, in which fresh air was pulled through the rooftop ventilation system, heated, and pumped throughout the building.³⁹ Gas stoves were available for domestic science classes, saws and planes were provided for the school's manual training classes, and chemistry labs were also available in the new school - all of which were state of the art.⁴⁰

The high school student body grew so rapidly that two months following the school's opening, it was deemed that additional space would soon be necessary to accommodate the school's population. By the end of December 1915, nearly 200 students were attending the new Central High School.⁴¹ In 1919, a west wing was constructed to provide additional space, as the building had already reached its full capacity.⁴²

In 1952, construction began on a new high school building on Caruthers Avenue. When the new high school was finished in 1953, the original Central High School (Schultz) was converted into a junior high school. Again, in 1964, the building's use was altered when it became a seventh-grade attendance center. At that time, the school was renamed to honor its original principal, Louis J. Schultz. Schultz was a Cape Girardeau native, born in 1896. He received a bachelor's of

United States Department of the Interior
National Park Service

National Register of Historic Places Continuation Sheet

Section number 8 Page 23

Schultz, Louis J., School (Preferred)
Cape Girardeau County, MO

science degree from what is currently Southeast Missouri State University in 1916 and taught industrial arts at (old) Central High School for two years, beginning in 1924. Afterward, Schultz served for eight years as the high school principal. In 1935, by which time Schultz had received a master's degree from the University of Iowa (1931), he was selected as the city's Superintendent of Schools. He continued in that role until his retirement in 1962. Schultz played an integral role in Cape Girardeau's public school system. Under his leadership as superintendent, student enrollment increased from 3,017 to 4,305 students. He gained funding for construction of New Lorimer School and the new Central High School on Caruthers Avenue (currently Central Junior High School). During most of his years as superintendent, Schultz kept his office location at the former high school on Pacific Street.⁴³

Schultz School was renovated in 1964 to accommodate its new use and update existing facilities. At that time, original wood floors were replaced with terrazzo; and the building received a new roof, new windows, and new doors. A staircase between the 1915 and 1919 wings was altered and an elevator added within a tiny addition on the façade at the connection between the wings, providing direct access to the basement and the north wing. The former auto mechanics shop was converted into a cafeteria/auditorium; and the former cafeteria was altered for use as classrooms and two new bathrooms. An original auditorium (which had been destroyed in a fire in 1958) was remodeled for use as classrooms with "movable partitions" to provide sufficient space for the building's new students. The school library remained in its original location, with minor alterations to upgrade the space and provide space for conference rooms.⁴⁴ These changes failed to alter the original floor plan of the building, the original walls, or the hallways, and the original hallway and detailing is still intact on the fourth floor which originally accessed the upper level of the auditorium, but which was not reused after 1964. Dropped ceiling tiles were added; but original interior ceilings remained intact.⁴⁵ Schultz School has no modern additions – the most recent wing was constructed in 1919, except for small sections added to the rear to update the heating plant and the elevator and stairwell modifications added to the façade in 1964. Overall, the building retains its original design, despite modifications in 1964. Additionally, the building retains its historical integrity, reflecting its original use as the city's premiere high school.

Architecture and Design of Public High Schools in Missouri and Schultz School

According to Missouri's Department of Elementary and Secondary Education (School Finance and Government Office), the State of Missouri never incorporated statewide building standards mandating construction guidelines for the state's public schools.⁴⁶ Despite this fact, the state did provide suggested guidelines for public school construction by the early 1930s, as noted in "School Building Series Bulletin No. 2" entitled *Schoolhouse Planning and Construction* published in 1933. These guidelines were based on school standards previously published beginning in the nineteenth century, in which architects and school agencies attempted to provide guidelines for public school districts and architects to insure that "all the problems of safety,

United States Department of the Interior
National Park Service

National Register of Historic Places Continuation Sheet

Section number 8 Page 24

Schultz, Louis J., School (preferred)
Cape Girardeau County, MO

sanitation, heating, lighting, ventilation,” and other factors were properly addressed in the nation’s modern schools.⁴⁷

When Schultz School was constructed in 1915, several states had “school codes” that mandated school construction, including Connecticut, Kansas, Massachusetts, New Jersey, New York, Pennsylvania, South Dakota, Vermont, Virginia and Utah.⁴⁸ Missouri (as noted above) had no such legislation. In fact, the state did not even provide minimum standards for “heating, ventilation, lighting, sanitation, or fireproofing.”⁴⁹ Handled in the manner that the state had always managed its public school systems, decisions regarding school construction came from the local level. Although the state began to publish bulletins providing recommendations for school construction by the 1930s, no such reference existed when Cape Girardeau planned its first high school.

Schultz School was a major addition to the city’s public school system. Although large brick schools had been constructed in the city prior to 1915, these all supported students attending lower level grades. As noted previously, Cape Girardeau did not offer public high school courses until 1908, placing the Normal School in charge of educating students who advanced beyond the eighth-grade level. When a public high school building proposal was presented to the city in the early 1910s, not all residents objected. In fact many embraced the project, albeit with guarded eagerness. The city hired the architectural firm of J. H. Felt & Company of St. Joseph, Missouri, well known throughout the Midwest as well versed in school construction. The lead architect for the project, D. B. Foster, consulted with the school’s teachers and encouraged their participation in planning the school’s design needs.⁵⁰

J. H. Felt & Company (as mentioned) was well known throughout the state when contracted by the City of Cape Girardeau in 1913. The firm specialized in construction of churches and educational buildings, receiving the majority of its commissions from clients in Missouri and Kansas. John H. Felt was born in 1867 in Indiana, and moved to St. Joseph, Missouri in 1898 where he opened an architectural office.⁵¹ The best known examples of Felt’s designs are the Boone County Courthouse in Columbia (1906), dwellings within the Krug Park Historic District of St. Joseph (NR listed in 2002), and several large churches in the Kansas City area. Felt’s company also designed a number of educational buildings such as the administration building for Northwest Missouri State University in Maryville. Not all of the Felt Company’s designs were for large institutions, however; some were completed for very small communities, such as the Hicklin School (1914) in Lexington, Missouri (NR listed in 2004).⁵² Cape Girardeau’s high school was no doubt a significant contribution to the firm’s roster of its public school commissions.

Architectural firms that specialized in educational buildings, such as J. H. Felt & Company, were well acquainted with national publications regarding school construction. Felt himself published a journal, *Modern Architecture*, beginning in 1904. As noted in a 1910 guide for architects and

United States Department of the Interior
National Park Service

National Register of Historic Places Continuation Sheet

Section number 8 Page 25

Schultz, Louis J., School (Preferred)
Cape Girardeau County, MO

“school authorities,” the “most important preliminary duty” of any school project was to hire a “competent architect . . . a man with expert knowledge in the erection of school buildings.”⁵³ In addition to this, the site and building specifications were equally as important. Although the term “high school” was a relatively new one, and the exact function of this type of facility was still being debated between communities when Schultz School was designed, it was nonetheless accepted by architects, planners, and school district administrators that the high school required a much different design than the elementary school.⁵⁴

William Ittner, one of the nation’s leading educational architects, wrote numerous articles, bulletins, and assessments regarding school design. Ittner was a St. Louis architect; he completed a large number of significant school building commissions in Missouri and across the nation. Ittner recommended that “small cities” of Cape Girardeau’s size (8,000 – 15,000 residents) provide at least two schools “for all grades.”⁵⁵ In 1910, Cape Girardeau had an estimated population of 8,545 residents. The city’s population doubled during the years 1900 – 1910, and trends indicated that the community would continue to grow.⁵⁶ With that in mind, the city’s leaders were well aware Cape Girardeau not only needed a high school, but it required one that could provide adequate space for continuing student growth. Additionally, the average high school by 1915 was expected to have at a minimum (in addition to classrooms and administrative offices), specialized areas for vocational training (shop and electronics for boys; domestic science for girls), a library, space for science classes (including storage areas for laboratory materials), a gymnasium, a lunch room and cafeteria, a “drawing” room or art area, and an assembly hall “large enough to seat all at one time” that could also be used by the public.⁵⁷

Schultz School met all of the standard requirements expected in a modern high school of its era. The building had modern classrooms, a library, administrative space, a gymnasium with adjacent dressing areas and showers, a large art room, a band room (1919 addition), and a cafeteria. Of note, the school’s gymnasium was quite modern, extending to include two floor levels (basement and first floor across from the main entrance), a library (directly above on the second floor), and a separate auditorium (on the third and fourth floors). This type of feature was later recommended in Missouri’s high school building bulletin published in 1933.⁵⁸ Only the best materials were used to construct the school. In 1914, approval was granted to increase costs by nearly \$1,500 to provide a terra cotta cornice (instead of galvanized iron) and a mat brick (instead of vitrified brick) exterior.⁵⁹ Carthage limestone, the same material used to construct the state’s capital in Jefferson City, was used for the building’s foundation and its cornerstone.⁶⁰ These factors indicate the design of Cape Girardeau’s first high school was noteworthy, well planned and recognized well beyond the city limits of Cape Girardeau as a major building project.⁶¹

Today Schultz School retains many original features that make it an exceptional example of Cape Girardeau’s public school buildings. Exterior finishes and the overall interior design are historic, and hallways and classrooms remain intact as originally planned. Although alterations in

United States Department of the Interior
National Park Service

National Register of Historic Places Continuation Sheet

Section number 8 Page 26

Schultz, Louis J., School (Preferred)
Cape Girardeau County, MO

the 1960s included window replacement (which occurred in all of Cape Girardeau's public schools) and reconfiguration of classrooms (primarily through the use of temporary partition walls), permanent revisions were not made to the original floor plan. The school was and remains a visible reminder of the growth, development, and continued advancements related to Cape Girardeau's public school system established in 1867.

End Notes

1. Edwin J. Benton, "A History of Public Education in Missouri: 1760 – 1964" (Ph.D. diss., Saint Louis University, 1965), 7-8.

2. Sue Thomas, *A Second Home: Missouri's Early Schools* (Columbia, MO: University of Missouri Press, 2006), 8.

3. Benton (1965), 9 and Thomas (2006), 11.

4. Claude A. Phillips, *A History of Education in Missouri: The Essential Facts Concerning the History and Organization of Missouri's Schools* (Jefferson City, MO: Self-published, 1911), 5.

5. Thomas (2006), 13.

6. Ibid.

7. Phillips (1911), 7.

8. Ibid.

9. Ibid, 10.

10. Thomas (2006), 35.

11. Phillips (1911), 10-11 and Benton (1965), 79.

12. Benton (1965), 79 and James Wilford Underwood, "A History of Secondary School Accreditation in the State of Missouri" (Ph.D. diss, University of Missouri, 1987), 58.

13. Phillips (1911), 17.

14. Ibid, 50-51.

United States Department of the Interior
National Park Service

National Register of Historic Places Continuation Sheet

Section number 8 Page 27

Schultz, Louis J., School (preferred)
Cape Girardeau County, MO

15. Underwood (1987), 89.
16. Ibid, 92.
17. Ibid, 91-92.
18. Phillips (1911), 54-55.
19. Ibid, 63.
20. Underwood (1987), 90.
21. Phillips (1911), 67-68.
22. Phillips (1911), 69.
23. Benton (1965), 81-83.
24. Glenn House Collection, Unidentified resource (no title; no date) and manuscript, "High School Established" (Kent Library/Archives, Southeast Missouri State University, Cape Girardeau, MO) and Felix Eugene Snider and E.A. Collins (eds), *Cape Girardeau: Biography of a City* (Cape Girardeau, MO: Ramfire Press, [1956]), 127.
25. Snider and Collins ([1956]), 128, 137.
26. [*Southeast Missourian*], *Images of the Past in the City of Roses* (Cape Girardeau, MO: self-published, [1993]), 55 and Snider and Collins ([1956]), 127.
27. Snider and Collins ([1956]), 127.
28. Ibid, 128-129.
29. Ibid, 132-133.
30. Ibid.
31. Ibid, 142-144.
32. Glenn House Collection, Manuscript, 3.

United States Department of the Interior
National Park Service

National Register of Historic Places Continuation Sheet

Section number 8 Page 28 Schultz, Louis J., School (Preferred)
Cape Girardeau County, MO

33. Snider and Collins ([1956]), 133-134.
34. Cape Girardeau School Board Minutes (14 October 1913).
35. City of Cape Girardeau, Recorder of Deeds Office. Collection of deeds, wills, and quit claims related to the Schultz School property, 1805-1915 (Cape Girardeau County Archives, Jackson, MO).
36. *Southeast Missourian*. Notes from school board meeting (30 April 1914) and Cape Girardeau School Board Minutes (4 March 1915).
37. *Southeast Missourian*. Notes from school board meeting (20 March 1915).
38. "Cornerstone of Central High School Building Laid," *The Daily Republican* (20 March 1915), 2.
39. "Pupils Moved to Central Today," *The Daily Republican* (22 October 1915), 1, 5.
40. *Southeast Missourian*. Notes for article concerning school opening (22 October 1915).
41. "High School is Given Dedication," *The Daily Republican* (18 December 1915), 1.
42. Peggy Scott, "Wall at aging school to be replaced," *Southeast Missourian* (15 November 1987), 2.
43. "Veteran City Educator Louis J. Schultz Dies," *Southeast Missourian* (24 February 1968), 1, 11.
44. "Renovating Old School," *Southeast Missourian* (24 July 1964), 1 and *Southeast Missourian* notes from school board meeting (19 August 1965).
45. *Southeast Missourian*. Notes from school board meeting (19 August 1965).
46. Missouri Department of Elementary and Secondary Education – Office of School Finance and Government, Telephone interview with Ruth Keenoy (9 October 2007).
47. Wilbur T. Mills, *American School Building Standards* (Columbus, OH: Franklin Educational Publishing Company, 1915), 7.

United States Department of the Interior
National Park Service

National Register of Historic Places Continuation Sheet

Section number 8 Page 29

Schultz, Louis J., School (preferred)
Cape Girardeau County, MO

-
48. William George Bruce, William C. Bruce, and Frank M. Bruce, *School Architecture: A Handy Manual for the Use of Architects and School Authorities* (Milwaukee, WI: Johnson Service Company, 1910), 193-233.
49. Mills (1915), 153.
50. *Southeast Missourian*. Notes from school board meeting (15 October 1913).
51. Kansas City Public Library (Local History), Felt, J.H. website; accessed 20 March 1915; available at <http://www.kcpl.lib.mo.us/localhistory/> and *Wikipedia, the free encyclopedia*, "John F. [sic] Felt;" accessed 20 March 2007; available at http://en.wikipedia.org/wiki/John_F._Felt.
52. Missouri Department of Natural Resources [website]; accessed 20 March 2007; National Register Districts (Buchanan County) available at <http://www.dnr.mo.gov/shpo/buchanan.htm>.
53. Bruce, Bruce and Bruce (1910), 7.
54. William C. Bruce, *High School Buildings* (Milwaukee, WI: The Bruce Publishing Company, 1919), 7.
55. William B. Ittner, "School Building in Small Cities," Reprint from *The American City Magazine, New York*. Copy available (not dated) at St. Louis Public Library, Fine Arts Division.
56. The State Historical Society of Missouri [website]; accessed 19 October 2007; available at <http://shs.umsystem.edu/mainstreet/capegirardeau/capegirardeau.html>.
57. Bruce (1919), 7-10.
58. Charles A. Lee and N.E. Viles, *Schoolhouse Planning and Construction: School Building Series, Bulletin No. 2* ([Jefferson City, MO]: State Department of Education – Division of School Building Service, 1933), 39.
59. Cape Girardeau School Board Minutes (30 April 1914) and Vogelsang Bros. Construction Co. bid sheet (1914).
60. "Cornerstone of Central High School . . ." (1915), 2.
61. Cape Girardeau School Board Minutes (4 March 1915).

United States Department of the Interior
National Park Service

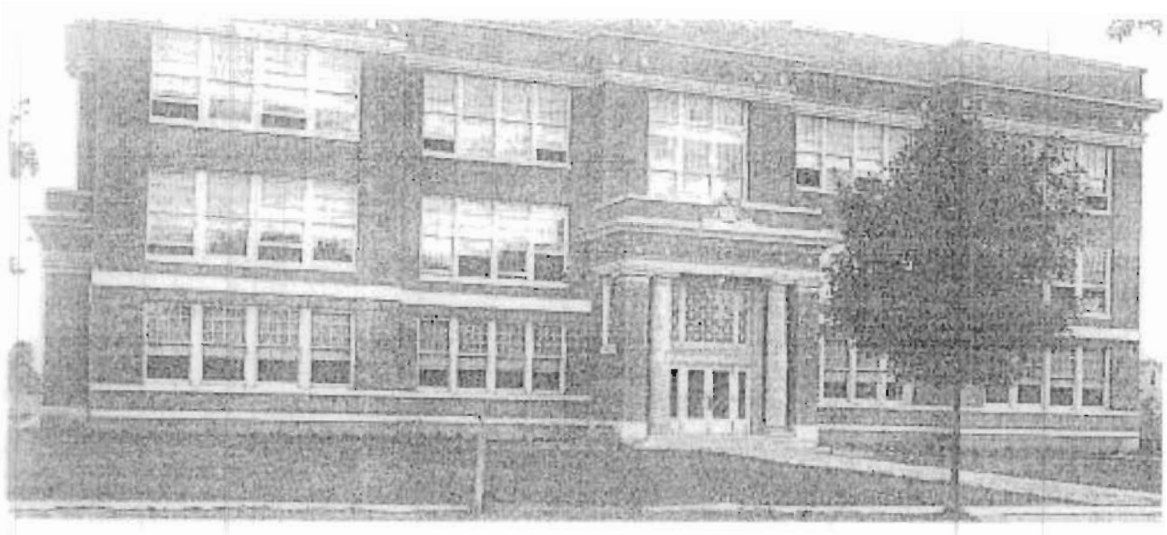
National Register of Historic Places Continuation Sheet

Section number 8 Page 30

Schultz, Louis J. School (Preferred)
Cape Girardeau, MO

Courtesy of Tom Meyer, Cape Girardeau

1920



United States Department of the Interior
National Park Service

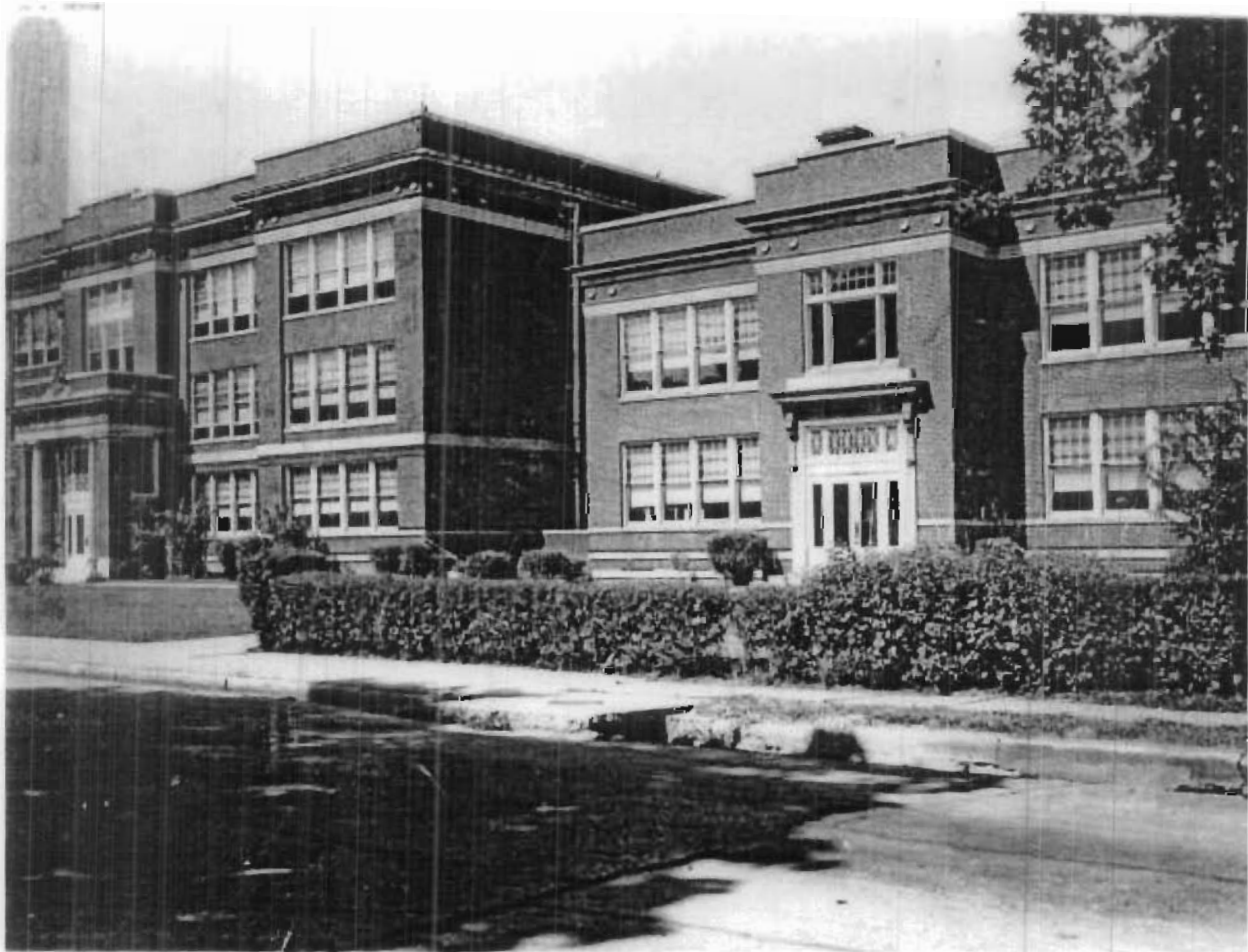
National Register of Historic Places Continuation Sheet

Section number 8 Page 31

Schultz, Louis J. School (Preferred)
Cape Girardeau, MO

Courtesy of Terri Foley, Cape Girardeau

Photographer James G. Hamen, Castle Studio, Cape Girardeau, 1950



United States Department of the Interior
National Park Service

National Register of Historic Places Continuation Sheet

Section number 8 Page 32

Schultz, Louis J. School (Preferred)
Cape Girardeau, MO

Courtesy of Southeast Missourian Archives, Cape Girardeau

1950



United States Department of the Interior
National Park Service

National Register of Historic Places Continuation Sheet

Section number 9 Page 33

Schultz, Louis J. School (Preferred)
Cape Girardeau, MO

Major Bibliographical References

- Benton, Edwin J. "A History of Public Education in Missouri: 1760 – 1964." Dissertation, St. Louis University (Missouri), 1965.
- Bruce, William C. *High School Buildings*. Milwaukee, WI: The Bruce Publishing Company, 1919. (of note, this is a revised, later edition; an earlier version pre-dated 1915, the year that Schultz School was constructed).
- Bruce, William George, William C. (Bruce), and Frank M. (Bruce). *School Architecture: A Handy Manual for the Use of Architects and School Authorities*. Milwaukee, WI: Johnson Service Company, 1910.
- Cape Girardeau School Board Minutes: 14 October 1913; 24 October 1913; 6 November 1913; 30 April 1914; 4 March 1915.
- City of Cape Girardeau, Recorder of Deeds Office. Collection of deeds, wills, and quit claims related to the Schultz School property, 1805-1915. Cape Girardeau County Archives, Jackson, Missouri.
- "Cornerstone of Central High School Building Laid," *The Daily Republican*, 20 March 1915: p. 2.
- Dormeyer, Fred E. "Alteration and Modification for a School Facility, 101 S. Pacific Street, School District of the City of Cape Girardeau, Cape Girardeau County Missouri." [Architectural Plans] Cape Girardeau, March 1964.
- "Extinguishers Save School: Limited Damage at Junior High." *Southeast Missourian*. 18 February 1958.
- Glenn House Collection. Unidentified resource (no title; no date) – typed manuscript "High School Established" Vertical files (clippings – schools – Cape Girardeau City), Kent Library/Archives, Southeast Missouri State University.
- "High School is Given Dedication," *The Daily Republican*. 18 December 1915, Pages 1 and 5.
- "Insurance Maps of Cape Girardeau, Cape Girardeau County, Missouri." New York: Sanborn Map Company, August 1915, May 1923, January 1931, 1950.

United States Department of the Interior
National Park Service

National Register of Historic Places Continuation Sheet

Section number 9 Page 34

Schultz, Louis J. School (Preferred)
Cape Girardeau, MO

Major Bibliographical References (continued)

Ittner, William B. "School Building in Small Cities," Reprint from *The American City Magazine, New York*. Copy of article (no date) available in vertical files, "Schools," St. Louis Public Library, Fine Arts Division.

Kansas City Public Library – website – Local History – "Felt, J.H."
<http://www.kcpl.lib.mo.us/localhistory/>. Access date: 20 March 1915.

Lee, Charles A. and N.E. Viles. *Schoolhouse Planning and Construction: School Building Series, Bulletin No. 2*. [Jefferson City, MO]: State Department of Education – Division of School Building Service, 1933.

Mills, Wilbur T. *American School Building Standards*. Columbus, Ohio: Franklin Educational Publishing Company, 1915.

Missouri Department of Elementary and Secondary Education – Office of School Finance and Government. Telephone Interview with Ruth Keenoy. 9 October 2007.

Missouri Department of Natural Resources website – Historic Preservation – National Register Districts. <http://www.dnr.mo.gov/shpo/buchanan.htm>. Access date: 20 March 2007.

Phillips, Claude A. *A History of Education in Missouri: The Essential Facts Concerning the History and Organization of Missouri's Schools*. Jefferson City, MO: (Self-published, 1911).

"Pupils Moved to Central Today," *The Daily Republican*. 22 October 1915, pages 1 and 5.

"Renovating Old School," *Southeast Missourian*, 24 July 1964, page 1.

Scott, Peggy. "Wall at aging school to be replaced," *Southeast Missourian*. 15 November 1987, pp. 2, 8.

Snider, Felix Eugene and E.A. Collins (eds). *Cape Girardeau: Biography of a City*. Cape Girardeau, MO: Ramfire Press, (1956).

[*Southeast Missourian*]. *Images of the Past in the City of Roses*. Cape Girardeau, MO: self-published, [1993].

United States Department of the Interior
National Park Service

National Register of Historic Places Continuation Sheet

Section number 9 Page 35

Schultz, Louis J. School (Preferred)
Cape Girardeau, MO

Major Bibliographical References (continued)

Southeast Missourian

Notes from school board meetings, 14, 15 and 24 October 1913;
Notes for cornerstone ceremony, 20 March 1915;
Notes for school opening article, 22 October 1915; and
Notes from school board meeting, 19 August 1965.

The State Historical Society of Missouri. Website available at:

<http://shs.umsystem.edu/mainstreet/capegirardeau/capegirardeau.html>. Access date 19 October 2007.

Thomas, Sue. *A Second Home: Missouri's Early Schools*. Columbia: University of Missouri Press, 2006.

Underwood, James Wilford. "A History of Secondary School Accreditation in the State of Missouri." Dissertation, University of Missouri, Columbia. 1987.

"Veteran City Educator Louis J. Schultz Dies," *Southeast Missourian*, 24 February 1968, pages 1 and 11).

Vogelsang Bros. Construction Co bid sheet, 1914; presented to the Cape Girardeau Board of Education.

Wikipedia, the free encyclopedia – online. John F. Felt (typographic error on website; should be John H. Felt). http://en.wikipedia.org/wiki/John_F._Felt. Access date: 20 March 2007

United States Department of the Interior
National Park Service

National Register of Historic Places Continuation Sheet

Section number 9 Page 36

Schultz, Louis J. School (Preferred)
Cape Girardeau, MO

Verbal Boundary Description

The legal description for this property is as follows.

TRACT NO. I:

Out Lot "H" containing about three acres and a quarter, bounded Eastwardly by Pacific Street and Westwardly by John Scripp's purchase of six acres, on the North by Out Lot "G", and on the South by Out Lot "I".

TRACT NO. II:

All of Lot Numbered Nine (9) in Block Numbered One (1) of West Place Addition to the City of Cape Girardeau, Missouri, as shown by Plat recorded in Plat Book 2 at Page 13, land records of Cape Girardeau County, Missouri.

TRACT NO. III:

That part of Lot Numbered Eight (8) in Block Numbered One (1) of the West End Place Addition to the City of Cape Girardeau, Missouri, described as follows: Beginning at the Northeast corner of Lot No. Eight (8) in Block No. One (1) in said addition and run West with the line of Lots Five (5) and Eight (8) in Block One (1), One Hundred and Seventy-seven (177) feet to an alley; thence South with the line of said alley Fifty-three and four tenths (53.4) feet to the Southwest corner of said Lot 8; thence East with the line of Lot Eight (8) and Nine (9), Seventy-four (74) feet to a corner; thence North parallel with Pacific Street, Forty-nine and nine-tenths (49.9) feet to a corner; thence East parallel with Merriwether Street, One Hundred and three (103) feet to Pacific Street; thence North with the West line of Pacific Street, Three and one-half (3½) feet to the place of beginning.

TRACT NO. IV:

Part of Lot Numbered Seven (7) in Block Numbered One (1) in the West End Place Addition to the City of Cape Girardeau, Missouri, described by the metes and bounds as follows: Beginning at the Northwest corner of said Lot 7 in Block 1 of the West End Place Addition to the City of Cape Girardeau, Missouri; thence East along the north boundary line of said Lot 7, 114 feet to the point of beginning; thence run East along the north boundary line of said lot 7, 63 feet to an alley; thence south along the west side alley, 53-1/3 feet to a corner; thence West, along the south boundary line of said Lot 7, 63 feet; thence run north across Lot 7 to the point of beginning.

TRACT NO. V:

All of Lot Numbered Three (3) in Block Numbered Sixteen (16) of West End Place Addition to the City of Cape Girardeau, Missouri, as shown on Plat recorded in Plat Book 2 at page 13, land records of Cape Girardeau County, Missouri

Boundary Justification

These boundaries incorporate all of the property that has been historically associated with this building and the property's legal description.

United States Department of the Interior
National Park Service

National Register of Historic Places Continuation Sheet

Section number _____ Add'l Page 37

Schultz, Louis J. School (Preferred)
Cape Girardeau, MO

Photo Log

Photographer: Sheila Findall
March 2007

Negatives with Karen Bode Baxter, 5811 Delor Street, St. Louis, MO 63109

Photo #1: Exterior, east façade and south elevation, looking northwest

Photo #2: Exterior, east façade and north elevation, looking southwest

Photo #3: Exterior, north and west elevations, looking southeast

Photo #4: Exterior, south and west elevations, looking northeast

Photo #5: Exterior, east façade south entry, looking west

Photo #6: Exterior, south elevation entry, looking northwest

Photo #7: Interior, first floor, south half of building, hall, from northeast corner looking south

Photo #8: Interior, first floor, north half of building, hall, from mid hall looking northeast

Photo #9: Interior, second floor, south half of building, hall, from southeast corner looking west

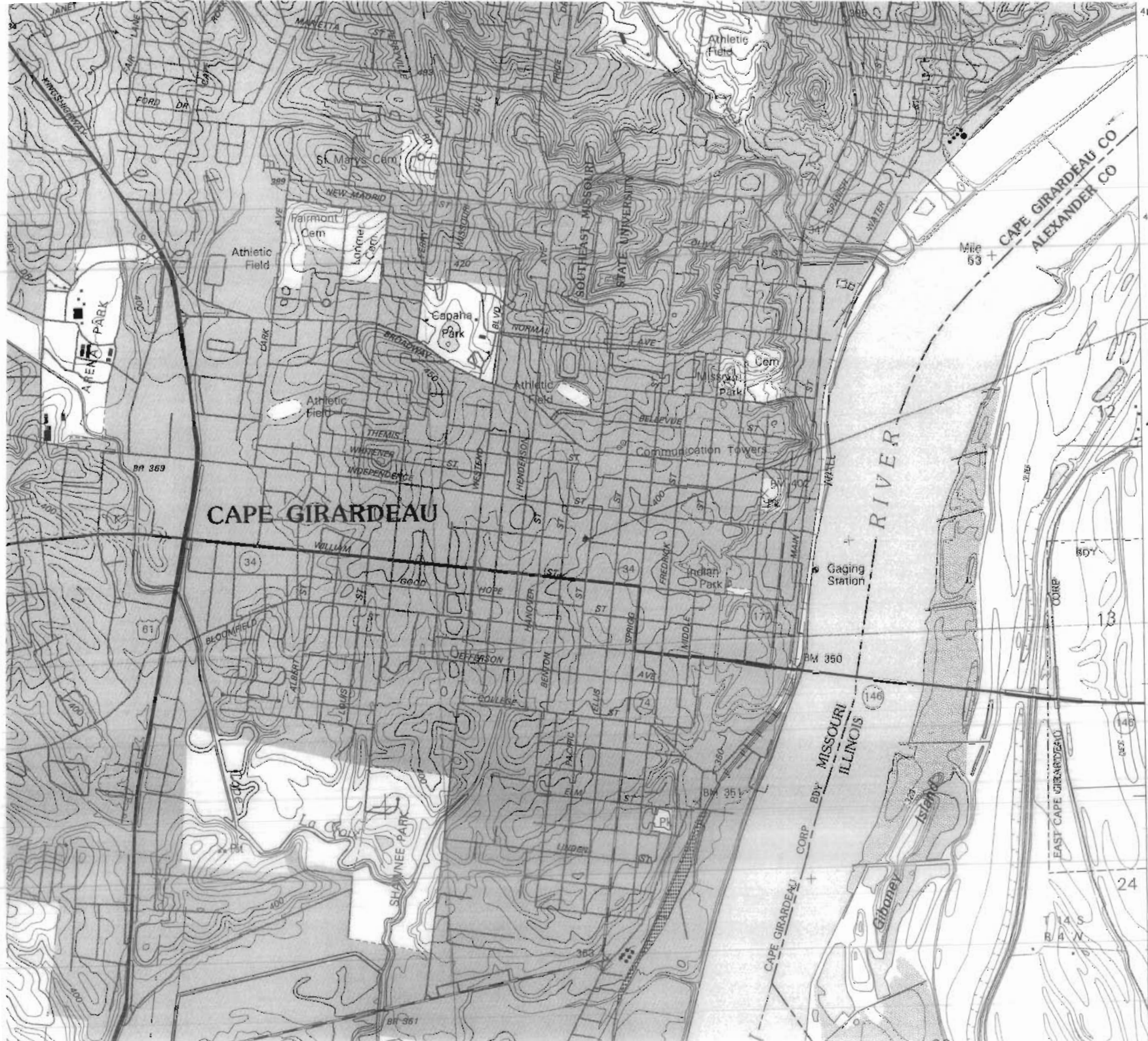
Photo #10: Interior, ground floor, south half of building, gym, from northwest corner looking southeast

Photo #11: Interior, second floor, south half of building, library, from northwest corner looking southeast

Photo #12: Interior, first floor, north half of building, northeast room, from northeast corner looking southwest

Photo #13: Interior, second floor, north half of building, south room, from northeast corner looking southwest

Photo #14: Interior, second floor, south half of building, mid north room, from southwest corner looking northeast



4134
 4133
 4132
 4131
 17° 30"
 4130
 24
 4129

Louis J. Schultz
 School (preferred)
 Cape Girardeau,
 Cape Girardeau Co. MO
 UTM Reference
 16/275740/4131520



Louis J. Schultz School
Cape Girardeau (Cape Girardeau County), MO
Photo No. 1



Louis J. Schultz School
Cape Girardeau (Cape Girardeau County), Mo
Photo No. 2



Louis I. Schultz School
Cape Girardeau (Cape Girardeau County), MO
Photo No. 3



Louis J. Schultz School
Cape Girardeau (Cape Girardeau County), MO
Photo No. 4



Louis J. Schultz School
Cape Girardeau (Cape Girardeau County), Mo
Photo No. 5



Louis J. Schu Itz School
Cape Girardeau (Cape Girardeau County), MO
Photo No. 6



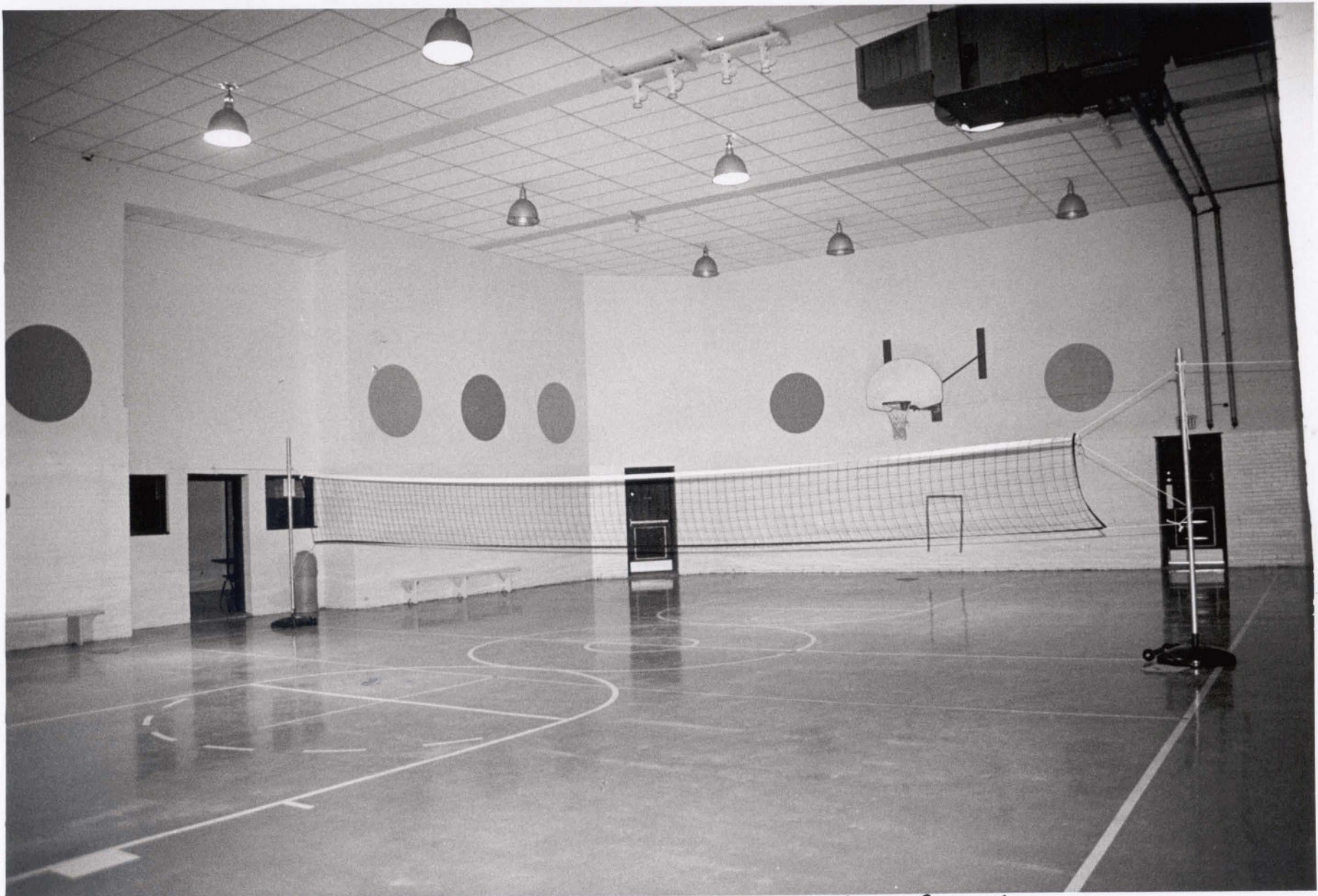
Louis J. Schultz School
Cape Girardeau (Cape Girardeau County), MO
Photo No. 7



Louis J. Schultz School
Cape Girardeau (Cape Girardeau County), MO
Photo No. 8



Louis J. Schu H2 School
Cape Girardeau (Cape Girardeau County), MO
Photo No. 9



Louis J. Schultz School
Cape Girardeau (Cape Girardeau County), MO
Photo No. 10



Louis J. Schultz School
Cape Girardeau (Cape Girardeau County), MO
Photo No. 11



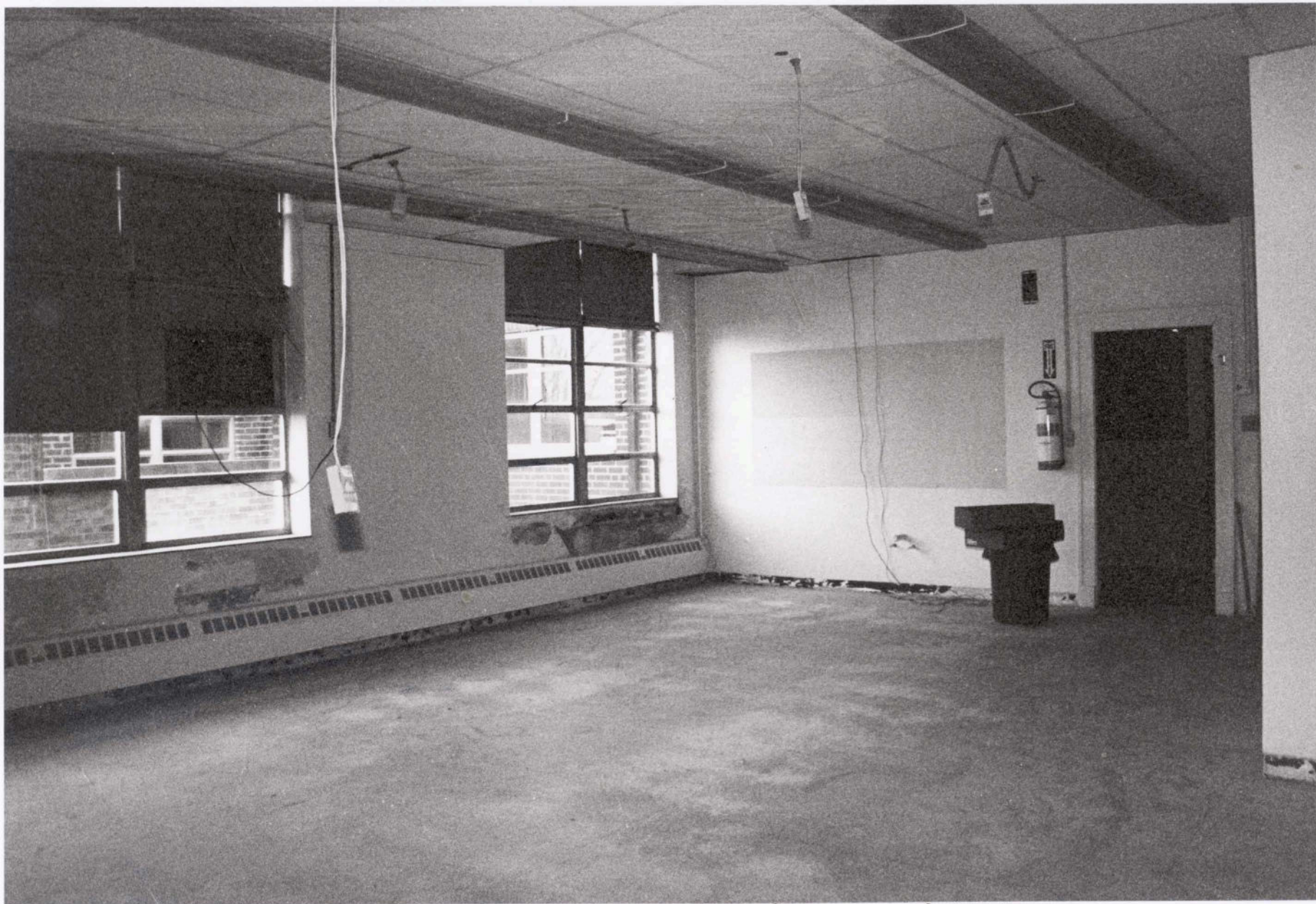
Louis J. Schultz School
Cape Girardeau (Cape Girardeau County), MO
Photo No. 11



Louis J. Schultz School.
Cape Girardeau (Cape Girardeau County), MO
Photo No. 12



Louis J. Schultz School
Cape Girardeau (Cape Girardeau County), MO
Photo No. 13



Louis J. Schultz School
Cape Girardeau (Cape Girardeau County), MO
Photo No. 14

United States Department of the Interior
National Park Service

National Register of Historic Places Continuation Sheet

Schultz, Louis J., School
Name of Property

County and State

Section number _____ Page _____

Name of multiple property listing (if applicable)

SUPPLEMENTARY LISTING RECORD

NRIS Reference Number: 08000663

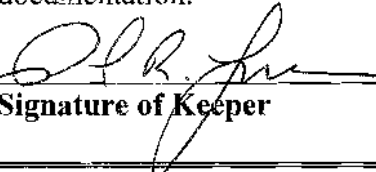
Date Listed: 7-18-08

Property Name: Schultz, Louis J., School

County: Cape Girardeau

State: MO

This property is listed in the National Register of Historic Places in accordance with the attached nomination documentation subject to the following exceptions, exclusion, or amendments, notwithstanding the National Park Service certification included in the nomination documentation.

for 
Signature of Keeper

7/19/08
Date of Action

Amended Items in Nomination

Section 8: Modification of the Historic Name

This Supplementary Listing Record amends the Historic Name of the nomination to "Central High School," which the school was called until 1964. The Other Name is "Schultz, Louis J., School," which is the preferred name.

Notification and Distribution

The Missouri State Historic Preservation Office was notified of this amendment.

This notice was distributed to the following:

- National Register property file
- Nominating Authority, without nomination attachment