

United States Department of the Interior
National Park Service

National Register of Historic Places Registration Form

This form is for use in nominating or requesting determinations of eligibility for individual properties or districts. See instructions in *Guidelines for Completing National Register Forms* (National Register Bulletin 16). Complete each item by marking "x" in the appropriate box or by entering the requested information. If an item does not apply to the property being documented, enter "N/A" for "not applicable." For functions, styles, materials, and areas of significance, enter only the categories and subcategories listed in the instructions. For additional space use continuation sheets (Form 10-900a). Type all entries.

1. Name of Property

historic name Hamilton Brown Shoe Company Building
other names/site number 0-10

2. Location

street & number First Street N/A not for publication
city, town Boonville N/A vicinity
state Missouri code MO county Cooper code 053 zip code 65233

3. Classification

| Ownership of Property | Category of Property | Number of Resources within Property | |
|---|---|-------------------------------------|--------------------------|
| | | Contributing | Noncontributing |
| <input checked="" type="checkbox"/> private | <input checked="" type="checkbox"/> building(s) | <u>3</u> | <u> </u> buildings |
| <input type="checkbox"/> public-local | <input type="checkbox"/> district | <u> </u> | <u> </u> sites |
| <input type="checkbox"/> public-State | <input type="checkbox"/> site | <u> </u> | <u> </u> structures |
| <input type="checkbox"/> public-Federal | <input type="checkbox"/> structure | <u> </u> | <u> </u> objects |
| | <input type="checkbox"/> object | <u>3</u> | <u> </u> Total |

Name of related multiple property listing: Historic Resources of Boonville, Mo.
Number of contributing resources previously listed in the National Register 0

4. State/Federal Agency Certification

As the designated authority under the National Historic Preservation Act of 1966, as amended, I hereby certify that this nomination request for determination of eligibility meets the documentation standards for registering properties in the National Register of Historic Places and meets the procedural and professional requirements set forth in 36 CFR Part 60. In my opinion, the property meets does not meet the National Register criteria. See continuation sheet.

G. Tracy Mehan III 3 August 89
Signature of certifying official G. Tracy Mehan III, Director Date
Department of Natural Resources and State Historic Preservation Officer
State or Federal agency and bureau

In my opinion, the property meets does not meet the National Register criteria. See continuation sheet.

Signature of commenting or other official Date

State or Federal agency and bureau

5. National Park Service Certification

I, hereby, certify that this property is:

entered in the National Register.
 See continuation sheet.

determined eligible for the National Register. See continuation sheet.

determined not eligible for the National Register.

removed from the National Register.

other, (explain): _____

Signature of the Keeper Date of Action

6. Function or Use

Historic Functions (enter categories from instructions)

Industry: manufacturing facility

Current Functions (enter categories from instructions)

Vacant: not in use

7. Description

Architectural Classification

(enter categories from instructions)

Other: Early Twentieth Century Industrial
Building

Materials (enter categories from instructions)

foundation Concrete

walls Brick

roof Asphalt

other Ceramic tile

Describe present and historic physical appearance.

HAMILTON BROWN SHOE COMPANY BUILDING

SUMMARY: The Hamilton Brown Shoe Company Building, located on First Street, is a four story, rectangular building with a flat, asphalt roof. A five story elevator tower and four story tower which housed restrooms are attached to the rear elevation. Its corbelled parapet is capped with tile coping on three elevations. The load bearing brick walls are laid in a common bond variant of five stretcher rows per header row and rest on a cast concrete foundation. In addition to the factory building, the property includes a brick oil house and a brick power plant building with cast concrete chimney. Despite minor alterations, the Hamilton Brown Shoe Company Building retains sufficient physical characteristics to convey integrity of workmanship, materials, and design, in addition to its integrity of location and setting.

ELABORATION: The facade, or east-northeast elevation, consists of a central bay, which houses the main entrance and the stairwell, and fourteen symmetrically arranged bays. Double leaf doors on the first level and a three-paned, arched awning window at the first stair landing are set in a recess formed by three brick rowlock courses which arch from a corbelled course which encircles the building above the first floor bays. At the second and third floor stair landings, a wide, eight-over-eight, double hung sash with flat rowlock lintels are set.

Each first floor bay is filled by three six-over-six, double hung sash, with the exception of the southernmost bay, in which the southernmost sash has been replaced by a door. The lower wall below the window ledges on the facade and the remaining elevations is a cast concrete extension of the slab foundation. Fenestration on the second, third, and fourth floors is identical to that of the first floor, although none of the bays has been altered. Brick pilasters rise from the corbelled arch above the first floor bays and extend to the corbelled parapet above the fourth floor bays on the facade and the remaining elevations.

The south-southeast elevation is divided into three bays. Fenestration on the second through the fourth floors is identical to that on the facade. Due to the sloping grade, however, the lower concrete wall is stepped and the westernmost bay is filled by six pane awning windows. The central bay is occupied by smaller, six-over-six, double hung sash.

See continuation sheet

United States Department of the Interior
National Park ServiceNational Register of Historic Places
Continuation Sheet

Hamilton Brown Shoe Company Building

Section number 7 Page 1

The grade is level on the north-northwest elevation, which is also divided into three bays, but only the sash in the easternmost bay is intact and identical to that on the facade. The sash in the central bay is intact, but most of this bay and all of the westernmost bay, which has been altered, are covered by a frame, shed roofed, L-shaped loading dock addition which rests on a cast concrete foundation. The addition is sheathed and roofed with tin. In the east-northeast elevation of the addition, a door is set in the bay nearest the original building, while four remaining bays are filled by rolling metal doors set on ceiling tracks. The remaining elevations of the addition are featureless. The second, third, and fourth floor fenestration of the north-northwest elevation of the original building is identical to the fenestration of the south-southeast elevation, with the exception of the central bay. In this bay on each floor, a door with transom opens on a metal fire escape and is flanked by six-over-six, double hung sash.

The rear, or west-southwest, elevation, is dominated by a square, five story, projecting elevator tower which is capped by an octagonal concrete pad which originally supported a water tank containing an emergency water supply for the factory. To the south of the tower and adjoining it, a rectangular, four story projecting tower originally housed restrooms on each floor. Frame, metal clad, shed roofed loading platforms are attached to the first floor north-northwest and west-southwest elevations of the elevator tower. A single, six pane awning window is centered on the second floor of the tower's west-southwest elevation, while six-over-six, double hung sash are located on the remaining floors. Two six-over-six, double hung sash are symmetrically placed on the same elevation of the smaller tower's second, third, and fourth floors. Seven bays extend to the north of the two towers. Window sash are identical to those on the facade and all are intact, although those on the first and second floors are covered. Sash on the first floor of the rear elevation is also smaller, due to the sloping grade. All bays contain three windows, with the exception of the first floor bay located nearest the tower. Double leaf doors with a transom are set below ground level and protected by cast concrete retaining walls. The doors are flanked by the smaller six-over-six, double hung sash. Five bays with triple sash extend to the south of the tower. Fenestration is identical on all four stories, although the sash on the first floor is smaller because of the sloping grade. The southernmost bay on the second, third, and fourth floors is occupied by a door which opens onto a metal fire escape. On the first floor the southernmost bay is occupied by a single awning window. The bay immediately to the north of the door contains a single, six-over-six, double hung sash. Windows on the first and second stories are intact but covered with metal.

The first floor of the shoe factory building is cast concrete while the upper floors are wood. Wooden beams support the upper floors. All machinery has been removed. The first floor has been partitioned into two offices, one on

United States Department of the Interior
National Park Service**National Register of Historic Places
Continuation Sheet**

Hamilton Brown Shoe Company Building

Section number 7 Page 2

the south end of the building and a more recent one in the center of the building, north of the stairwell. Restrooms have been added to the south of the stairwell on the first floor. An additional partition adjoins the loading bay addition. The remaining floors are unaltered.

A spilt level, brick power plant, a cast concrete smokestack, and a brick oil house are located to the west of the shoe factory building. Both the power plant building and the oil house have cast concrete foundations and roofs. The power plant is composed of a rectangular, parapeted, two story section, with a parapeted, one story section attached to its east-northeast elevation, and a rectangular, two story tower rising from the one story section's south-southeast elevation.

On the east-northeast elevation, single doors are set in the southern edge of the tower's first story and center of the one story section. Approximately four feet above grade, four metal chute doors are symmetrically arranged, two on each side of the central door, with a smaller metal door for the removal of ash between each pair of doors at ground level. A circular vent outlined with a double rowlock brick course opens above the southernmost metal chute door. The two story section of the power house is divided into six bays on the east-northeast elevation. The one story section attached to this elevation of the facade covers four of the first story bays, while the bay nearest the one section contains a double leaf door. Two four-over-four, double hung sash with a wide transom covered with metal occupy the northernmost bay, which is one-and-one-half stories tall. The five second floor bays each contained double sash but are now covered by metal. A single, four-over-four, double hung sash is centered in the second floor, north-northwest elevation of the two story tower. The tower's south-southeast elevation also contains a single window centered in its second story, but metal sheets cover the sash.

The west-southwest elevation of the tower contains no features.

The south-southeast elevation of the two story, rectangular section contains a single bay, located on the eastern end of the elevation, which holds double leaf doors, now covered with metal, surmounted by double, four pane awning windows which form a transom. Only one window is visible, while the other is covered with a metal sheet.

Due to the uneven nature of the terrain, the first story of the west-southwest elevation of the power plant building is covered with earth. The second story of the elevation is divided into six symmetrically arranged bays, each containing two six-over-four, double hung sash.

United States Department of the Interior
National Park Service

National Register of Historic Places Continuation Sheet

Hamilton Brown Shoe Company Building

Section number 7 Page 3

A single bay which contains two six-over-six, double hung sash is centered in the second story of the north-northwest elevation. Earth also covers approximately two-thirds of the elevation's first story. An additional brick building originally covered the eastern third of the first story and joined the brick oil house, located to the north of the power plant building. A concrete retaining wall extends from the power plant building to the north and forms the west-southwest elevation of the oil house. Double metal doors are centered in the oil house's south-southeast elevation and are its only feature. The brick bond used on the power plant building and the oil house is the same common bond variant used on the shoe factory building.

A cast concrete smokestack approximately five stories tall is located to the south of the power plant building, connected to the power plant by a metal vent pipe. A metal incinerator, placed on the roof of the power plant building, is apparently a later addition.

8. Statement of Significance

Certifying official has considered the significance of this property in relation to other properties:

nationally statewide locally

Applicable National Register Criteria A B C D

Criteria Considerations (Exceptions) A B C D E F G

Areas of Significance (enter categories from instructions)
Industry _____

Period of Significance
1919-39 _____

Significant Dates
N/A _____

Cultural Affiliation
N/A _____

Significant Person
N/A _____

Architect/Builder
Unknown _____

State significance of property, and justify criteria, criteria considerations, and areas and periods of significance noted above.

SUMMARY: The Hamilton Brown Shoe Company Building is significant under Criterion A in the area of INDUSTRY. Constructed in 1919-1920, Hamilton Brown's Boonville plant was the largest employer in the town by 1927. Built with funds raised by public subscriptions, the Hamilton Brown plant represents the efforts of Boonville's citizens to attract industry to their town following the disruption of the town's river oriented economy by the intrusion of the railroads in central Missouri. The Boonville shoe company building also represents the importance of the shoe industry to Missouri's economy. Finally, the Boonville plant, the second largest shoe factory outside of St. Louis, reflects the relocation of the originally St. Louis based industry to outstate Missouri after 1900 (see "Historic Resources of Boonville, Missouri: The Railroad Era, 1870-1924").

ELABORATION: Hamilton Brown operated their Boonville plant from 1921 to the mid-1930s (see "Historic Resources of Boonville, Missouri: The Railroad Era, 1870-1924"). In 1939, following a series of financial problems and two receiverships, the company was dissolved. Boonville citizens again purchased the building they had funded and offered it to the Selwyn Shoe Company, which operated until the early 1970s. Currently it is used as a warehouse for Nordyne, Incorporated.

9. Major Bibliographical References

Boonville Advertiser, "Souvenir Bridge Number," June 27, 1927.

Davis, Horace B. Shoes: The Workers and the Industry. New York: International Publishers, 1940.

Dyer, Robert L. Boonville: An Illustrated History. Boonville, Missouri: Pekitanoui Publications, 1987.

"Hamilton Brown Has Factory Going Here," Central Missouri Republican, November 10, 1921.

Sanborn Fire Insurance Company Maps. Boonville, Missouri. 1929.

See continuation sheet

Previous documentation on file (NPS):

- preliminary determination of individual listing (36 CFR 67) has been requested
- previously listed in the National Register
- previously determined eligible by the National Register
- designated a National Historic Landmark
- recorded by Historic American Buildings Survey # _____
- recorded by Historic American Engineering Record # _____

- Primary location of additional data:
- State historic preservation office
 - Other State agency
 - Federal agency
 - Local government
 - University
 - Other
- Specify repository: _____

10. Geographical Data

Acreage of property Less than one acre

UTM References

A

| | |
|---|---|
| 1 | 5 |
|---|---|

| | | | | | |
|---|---|---|---|---|---|
| 5 | 2 | 1 | 6 | 6 | 0 |
|---|---|---|---|---|---|

| | | | | | | |
|---|---|---|---|---|---|---|
| 4 | 3 | 1 | 3 | 8 | 0 | 0 |
|---|---|---|---|---|---|---|

 Zone Easting Northing

B

| | |
|--|--|
| | |
|--|--|

| | | | | | |
|--|--|--|--|--|--|
| | | | | | |
|--|--|--|--|--|--|

| | | | | | | |
|--|--|--|--|--|--|--|
| | | | | | | |
|--|--|--|--|--|--|--|

 Zone Easting Northing

C

| | |
|--|--|
| | |
|--|--|

| | | | | | |
|--|--|--|--|--|--|
| | | | | | |
|--|--|--|--|--|--|

| | | | | | | |
|--|--|--|--|--|--|--|
| | | | | | | |
|--|--|--|--|--|--|--|

D

| | |
|--|--|
| | |
|--|--|

| | | | | | |
|--|--|--|--|--|--|
| | | | | | |
|--|--|--|--|--|--|

| | | | | | | |
|--|--|--|--|--|--|--|
| | | | | | | |
|--|--|--|--|--|--|--|

See continuation sheet

Verbal Boundary Description Beginning at a point at the intersection of Morgan and First Streets, proceed southeast 315 feet along the west curblineline of First Street to the intersection of First and Spring Streets. Then proceed southwest 90 feet along the north curblineline of Spring Street. Then proceed northwest 315 feet to the south curblineline of Morgan Street. Then proceed northeast 90 feet along the south curblineline of Morgan Street to the point of beginning.

See continuation sheet

Boundary Justification

The boundary encompasses the entire lot which has been historically associated with the property and includes the factory building, oil house, power plant building and concrete chimney.

See continuation sheet

11. Form Prepared By

name/title Preservation Planning Section
 organization Missouri Historic Preservation Program date May 5, 1989
 street & number P. O. Box 176 telephone 314/751-5365
 city or town Jefferson City state Missouri zip code 65102

Hamilton Brown Shoe Company Building
First Street
Boonville, Cooper County

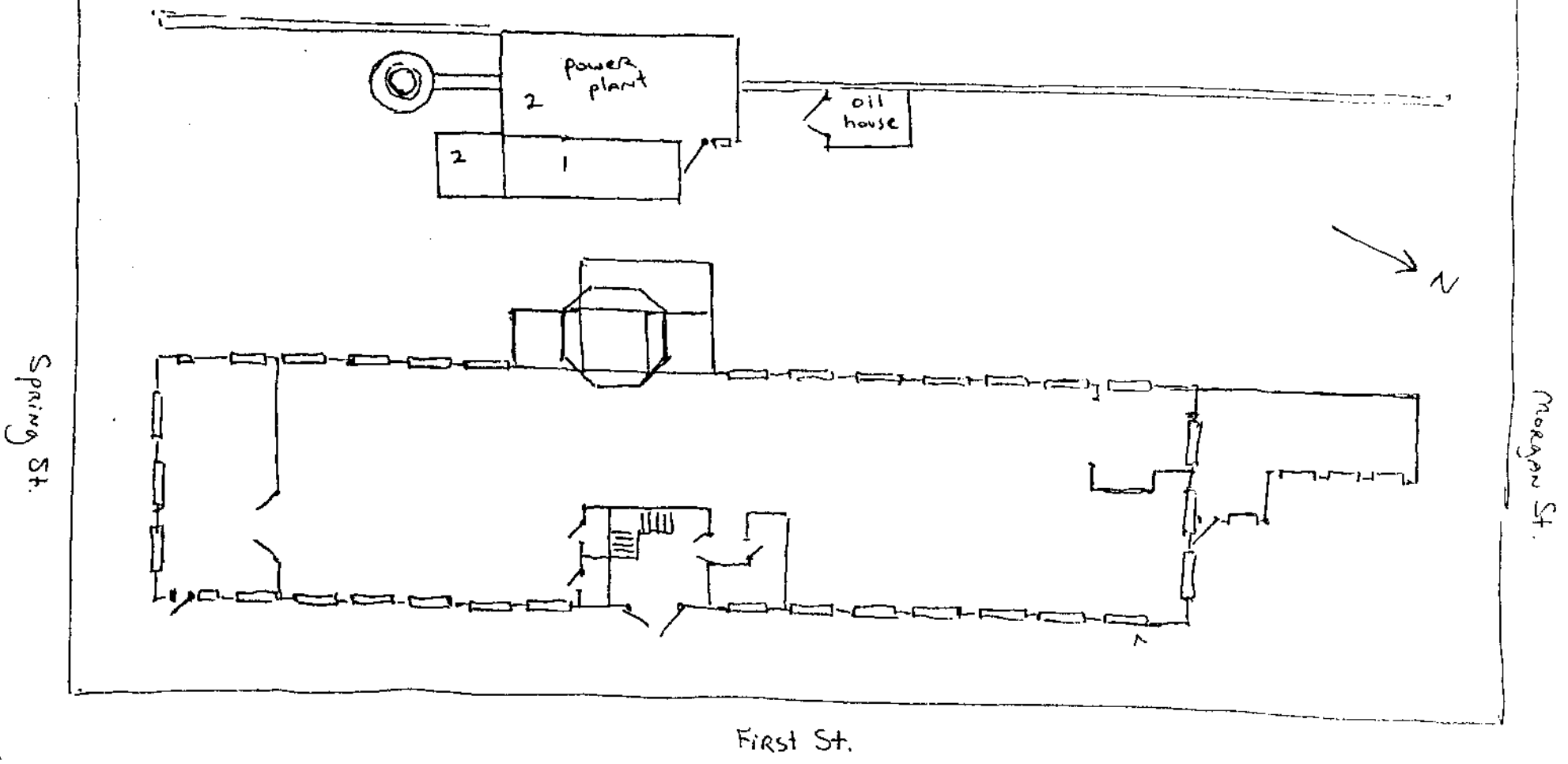


Photo Log:

Name of Property: **Hamilton Brown Shoe Company Building**

City or Vicinity: **Boonville**

County: **Cooper County** State: **MO**

Photographer: **S. Mitchell**

Date

Photographed: **December 1988**

Description of Photograph(s) and number, include description of view indicating direction of camera:

- 1 of 14. View from SE
- 2 of 14. View from E
- 3 of 14. View from SW
- 4 of 14. View from N
- 5 of 14. View from NE
- 6 of 14. View from NW
- 7 of 14. Detail of elevator tower, view from NW
- 8 of 14. Interior, 4th FL
- 9 of 14. Detail, wood support beam
- 10 of 14. Power plant building and smokestack, view from S
- 11 of 14. Power plant building, view from SE
- 12 of 14. Power plant building, view from NE
- 13 of 14. Power plant building, view from NW
- 14 of 14. Oil house, view from SE

























