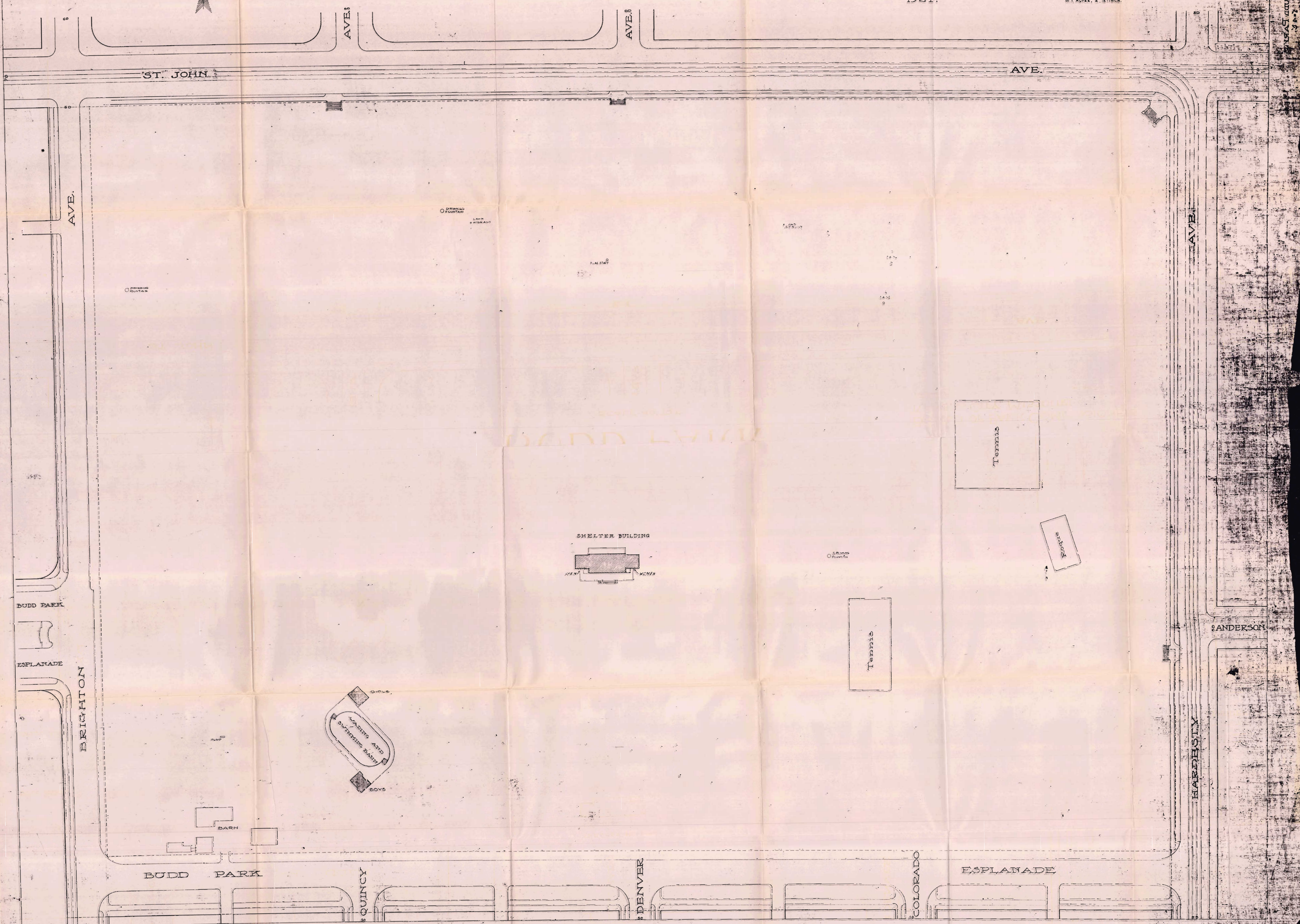
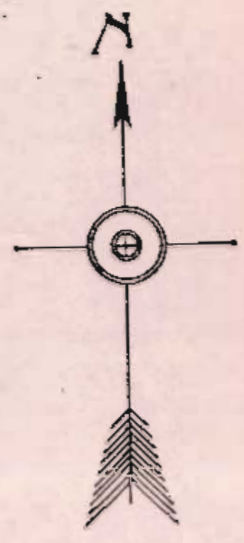
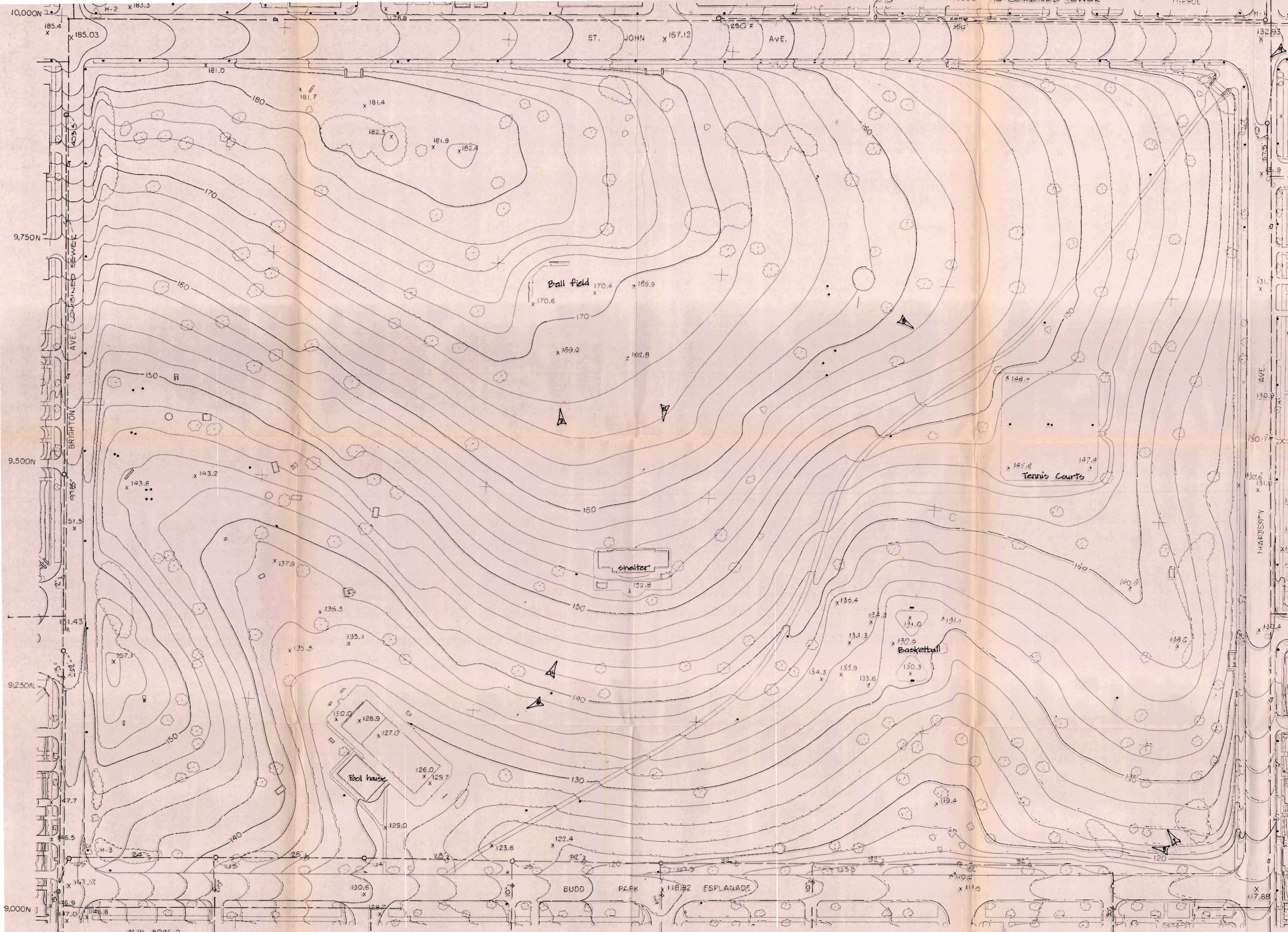


MAP OF BUDD PARK

SCALE: 40' TO 1"

BOARD OF PARK COMMISSIONERS,
KANSAS CITY, MISSOURI.
1921.





MJH-5046-2
PHOTOGRAPHY DATED 3-6-79

SCALE: 1" = 50' 0"

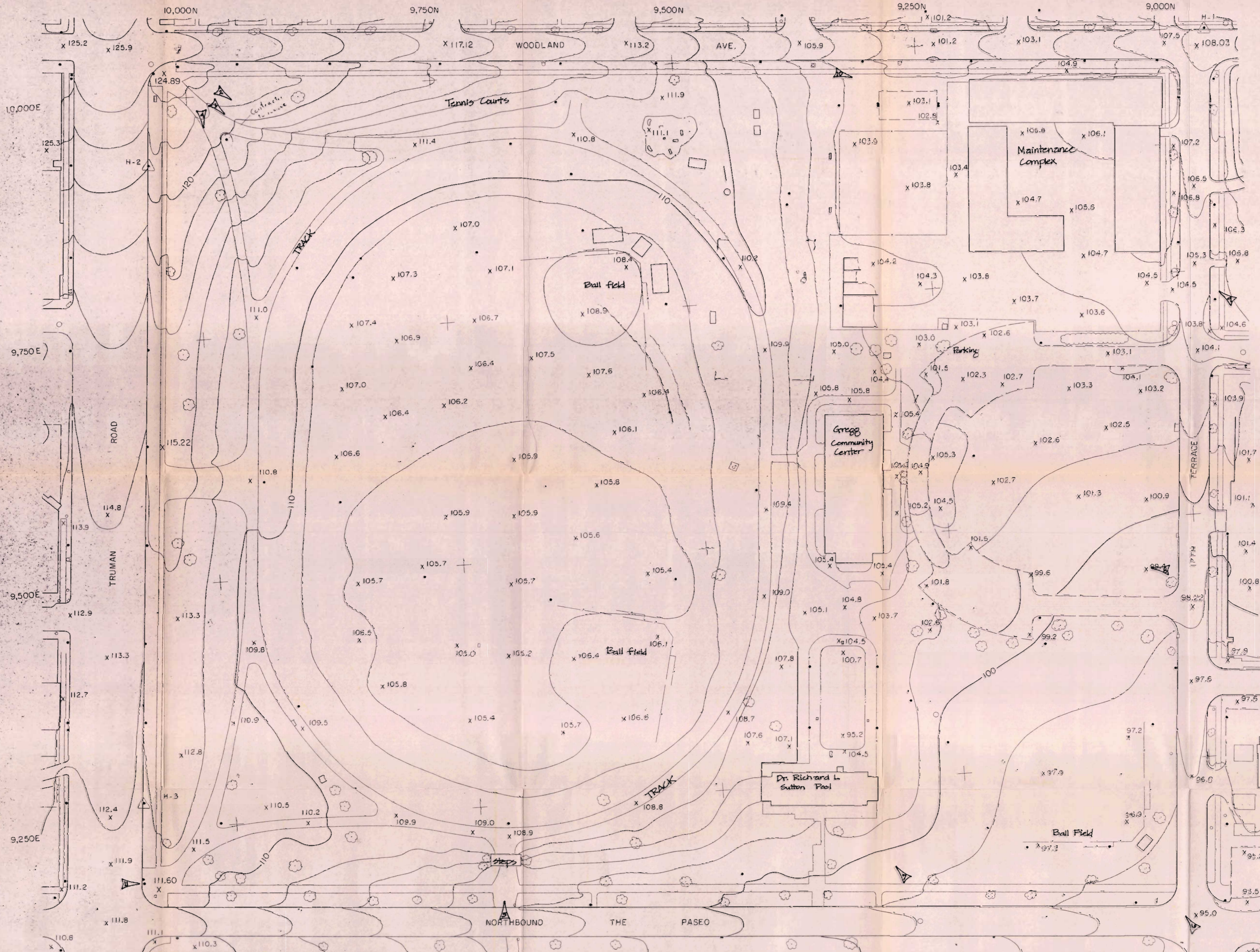
BUDD PARK BASE MAP

LOCATION OF PHOTOGRAPHS (8-)

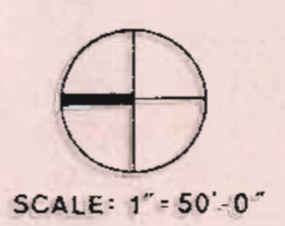


BOARD OF
PARKS & RECREATION COMMISSIONERS
KANSAS CITY, MISSOURI

REVISED	DATE
DESIGN	
DRAWN	
CHECKED	
DATE	AUGUST 10, 1979
FILE NO.	12.41
SHEET NO.	1



MJH - 5046-1
 PHOTOGRAPHY DATED 3-6-79



LOCATION OF PHOTOGRAPH
 (P-3)
PARADE PARK
BASE MAP

BOARD OF
PARKS & RECREATION COMMISSIONERS
 KANSAS CITY, MISSOURI



REVISED	DATE
DESIGN	
DRAWN	
CHECKED	
DATE	SHEET NO.
AUGUST 10, 1979	
FILE NO.	
14.42	1