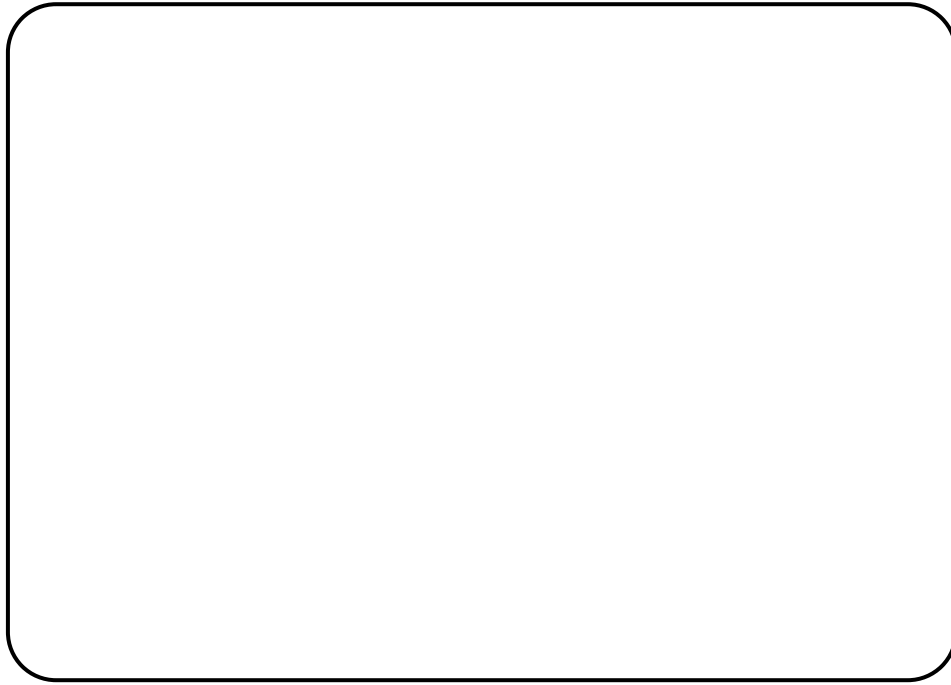


DRAW AND WRITE

Use a pencil to sketch a an object or artwork you saw during your visit.



PLAN YOUR VISIT



Most restrooms are ADA accessible. Changing stations are located in the first floor restrooms. There is a lactation room in the basement. Directions and keys can be obtained from the Museum Information Desk.

MISSOURI STATE MUSEUM

201 W. Capitol Ave., First Floor
Jefferson City, MO 65101
573-751-2854
mostateparks.com



Need a snack? Chez Monet in the Capitol basement is open M-F from 7 a.m. to 2 p.m. Vending machines are also located in the basement near the café. Ask for directions at the Museum Information Desk.



Have a question? Ask at the Museum Information Desk on the first floor.

MISSOURI STATE MUSEUM

FAMILY GUIDE

EXPLORE THE MUSEUM AND STATE CAPITOL



WELCOME TO THE MUSEUM AND CAPITOL!

Explore, learn, and enjoy the museum and Capitol as a family. There is much to see and do. Here are some tips for your visit.



The Capitol is full of artworks. Help us keep the art safe by using your eyes instead of your hands.



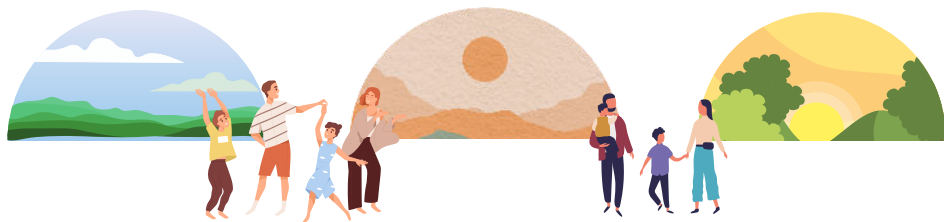
Move slowly while you're in the Capitol so you don't miss something!



Share ideas and chat about what you see, think and imagine. The Capitol is very echoey, so please use your inside voice.

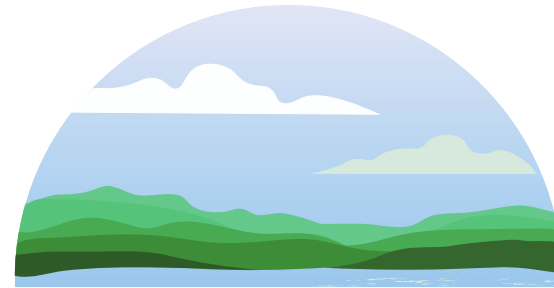


Look at the exhibits, artworks and architecture of the Capitol together. It's more fun that way!



TIME TO EXPLORE!

Put the kids in charge. Have them choose your route and activities. Need ideas?



PLAY A CHALLENGE GAME

The artwork in the Capitol contains people, shapes, objects and more. Start a challenge with "I challenge you to find (number) of (objects)."

USE YOUR IMAGINATION

If you were inside an artwork, what might you see, hear, taste, smell or feel?

MOVE AND POSE

Use your whole body to experience art. Act out the stories or pose like the people, animals or shapes in the artworks.

LOOK AND ASK QUESTIONS

Ask questions to start a conversation:

- What do you see?
- What did you notice that makes you say that?
- Where else have we seen something like this?
- What else can we find together?

INSIDE OR OUT?

There is much to see inside and outside of the building. These activities also work for the grounds, monuments and exterior architecture.