

ROARING RIVER STATE PARK BIG SUGAR CREEK STATE PARK

Public Meeting
June 5th, 2025



Introductions

Joining us today

- Community Officials
- MSP Leadership
- RRSP Staff
- Roaring River Adventures
- Missouri Department of Conservation



MISSOURI
STATE PARKS

*Missouri State Parks – a division of the
Missouri Department of Natural Resources*



WELCOME!

Topics of Discussion

- Past Projects
- Upcoming Projects
- Upcoming Park Events
- Recycling Program Update
- Opening Day Recap
- Facebook Page
- Ecological Stewardship
- Natural Resource Interpretation
- Ranger Program Updates
- Concession Updates
- Missouri Dept. of Conservation



PAST PROJECTS

Mike Busekrus
Superintendent



PAST PROJECTS OVERVIEW

- Constructed new “Grab & Go” counter for the Park Store
- New swing set in Zone 1
- Refreshed the Amphitheatre
- 4 Electric vehicle chargers installed & functional
- Propane system improvements at the Park Office
- Propane System improvements at Camp Smokey
- R60 insulation installed at CCC Lodge & HVAC system work



PAST PROJECTS OVERVIEW

- Renovated 4 showers in campground 3
- Installed new metal roof on the Maintenance Shop
- 2 storm sirens were installed in CG1 & CG3
- Little Free Library installed at Nature Center



PAST PROJECTS OVERVIEW

- Remodel of the Nature Center Exhibit Space



PAST PROJECTS OVERVIEW

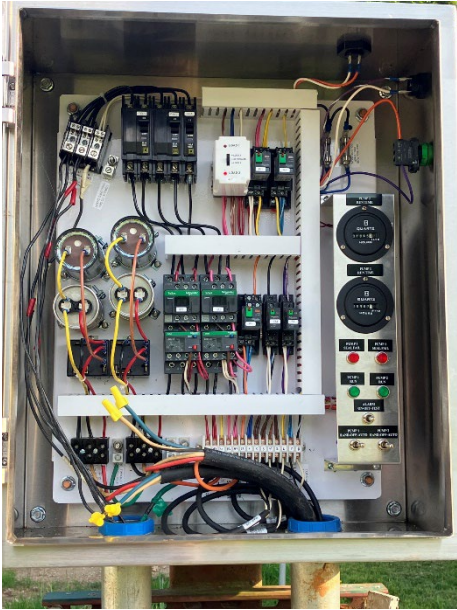
- Began working on school house
- Removal of hazard trees
- Installed new roof Park Office



PAST PROJECTS OVERVIEW

ARPA Wastewater system improvement project

- Rebuilt all lift stations in the park, pumps, electronics, etc.
- New wastewater line bored below the stream near fish cleaning station
- Upcoming waterline work near CCC Lodge



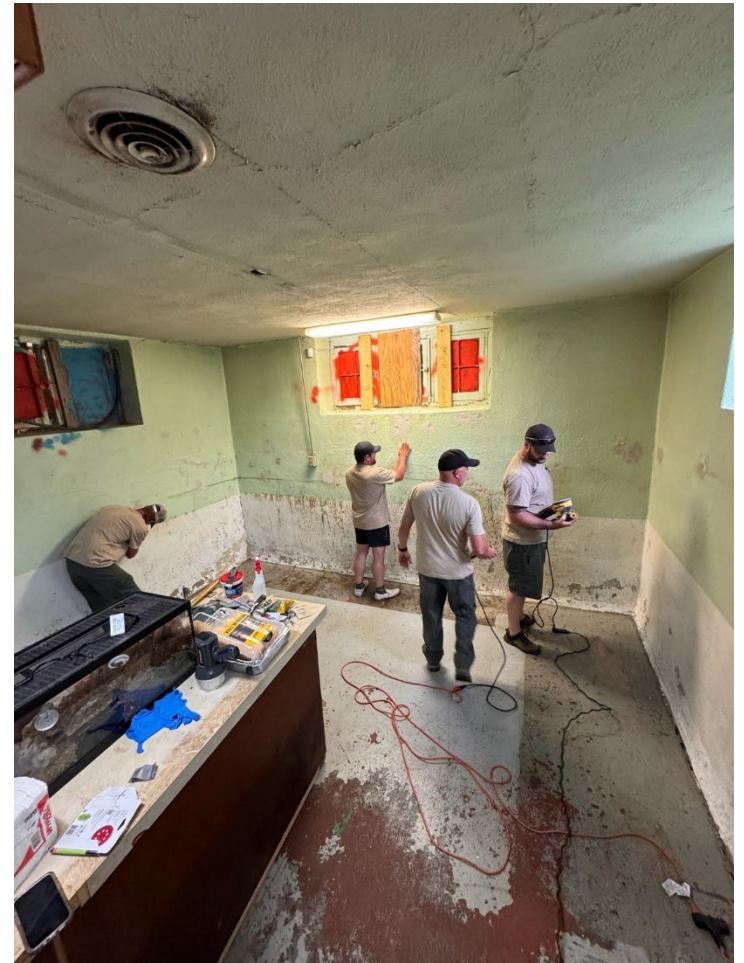
PAST PROJECTS OVERVIEW

- Campground 2 improvements
 - 4 sites removed, 3 new constructed in place
 - Sites have been raised and no longer hold water
 - Amenities remain the same



PAST PROJECTS OVERVIEW

- Working on creating a classroom space at the Nature Center



PAST PROJECTS OVERVIEW

- Broke ground for new trailhead for Fire Tower Trail re-route
- Highway crossings will be eliminated
- Old parking lot will be removed.



PAST PROJECTS OVERVIEW

Facility improvements in partnership with Roaring River Adventures

- Refrigerators & ranges at the duplex cabins
- HVAC upgrades at the Emory Melton Inn
- HVAC upgrades in several cabins
- Propane improvements at the Emory Melton Inn
- HVAC upgrades at the Park Store
- New range hood vent at the Emory Melton Inn
- New furnishings for the Honeymoon Cabin
- PTAC units at the Emory Melton Inn
- Made improvements in the restaurant kitchen
- Fire system improvements at the Emory Melton Inn

These investments total more than \$150,000!



PAST PROJECTS OVERVIEW

Spruced up the lower level of the CCC Lodge

- Fly Tying, Coffee w/ Superintendent, Learn 2 Trout Fish, Christmas Open House, Eagle Days, Coffee w/ Birds, CCC Exhibit



PAST PROJECTS OVERVIEW

- Campground 3 Ribbon Cutting, March 1



PAST PROJECTS OVERVIEW

- All these projects in addition to daily routine maintenance items, cleaning, and mowing!

Next time you see our team out and about give them a thanks!



UPCOMING PROJECTS

Mike Busekrus
Interim Superintendent



UPCOMING PROJECTS OVERVIEW

Roaring River

- Campground 2, Phase 2 improvements, sites 109-118
- CCC Shelter restoration
- Completing water & wastewater system improvements
- Complete Fire Tower Trailhead / working with MODOT to remove highway crosswalks / new section of trail
- Completing shower renovation in Campground 3
- Schoolhouse work will continue
- Nature Center Classroom Space work will continue
- Remodel of cabins 4-9 in partnership with Roaring River Adventures

Big Sugar Creek

- Renovate vault toilet
- Rock building roof replacement



Official Facebook Page

Mike Busekrus
Superintendent



Official Facebook Page

- Official Facebook Page
 - Look for the red circle / blue verified checkmark
 - Nearly doubled our following since last year!
 - Quickest way to get info out to visitors



Lots of fish being caught today, post up those Opening Day photos in the comments!
Sat, Mar 1

Views	Reach	Interactions
481,416	387,655	4,853



Official Facebook Page

- Best source for up-to-date information
- Weekly MEGA post
- Historical photos
- Events
- Weather / Stream Conditions

Sat, May 31 at 10 AM and 5 more
Pollinator Garden Workdays
 12716 Farm Road 2239, Cassville, MO, United States, Missouri 65625 · Cassville...

Thu, Jun 5 at 6 PM
Public Meeting - Roaring River and Big Sugar Creek state parks
 12716 Farm Road 2239, Cassville, MO, United States, Missouri 65625 · Cassville...

Sun, Jun 8 at 6:30 AM
Free Fishing Weekend
 12716 Farm Road 2239, Cassville, MO, United States, Missouri 65625 · Cassville...

Sat, Jun 21 at 10 AM
Fly Tying & Coffee
 12716 Farm Road 2239, Cassville, MO, United States, Missouri 65625 · Cassville...

Roaring River State Park
 Published by Michael Busekrus
 · May 15 at 2:04 PM ·

Weekend MEGA post for May 16-18, 2025!
 -Fishing time: 6:30am-8:15pm
 -Weather: Sunny, temps pushing into the mid 80s chances for rain
 -Stream Condition: Clearing up nicely - see video... See more

Landing Net Building Demonstration
 May 17: 10am-Noon

Unsettled Weather Ahead
 Daily Chances for Rain and Thunderstorms Saturday Night through Tuesday

Day	High	Low
Saturday	83°	79°
Sunday	85°	79°
Monday	84°	79°
Tuesday	85°	79°

Roaring River State Park Programs
 For more information, please call the Ozark Chiquappa Nature Center at 417-847-3742.

Friday, May 16
3:30 pm NATURE CENTER STORY HOUR
 Meet at the Nature Center

Saturday, May 17
10:00 am ROARING RIVER CAVE MIKE Meet at Devil's Kitchen Trailhead
2:00 pm HATCHERY TOUR Meet at the Hatchery Office
2:00 pm SPRING DIVE VIDEO Meet at the Nature Center
Sunday, May 18
9:00 am - 5:00 pm NATURE CENTER SCAVENGER HUNT Meet at the Nature Center

Roaring River State Park is under a FLASH FLOOD WATCH until Monday, May 26 @ 7pm.

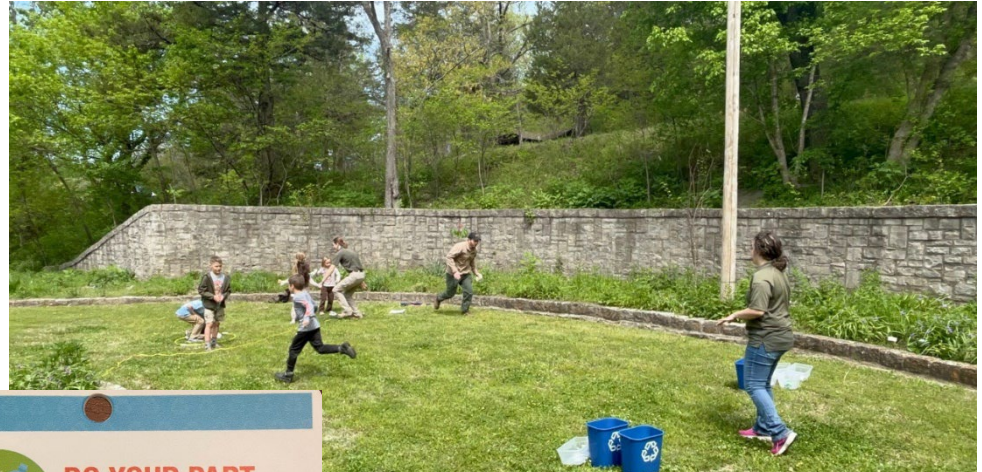
Recycling Program & Opening Day 2025

Forrest Brumm
Assistant Superintendent



Recycling Program Update

- Piloted the program in CG 1 and have now launched it through all 3 campgrounds.
- Average 320lbs aluminum recycled per month.
- Currently only accepting aluminum cans.
- Working with local recyclers



DO YOUR PART – BAG IT, DON'T TRASH IT!
JOIN US IN RECYCLING ALUMINUM.

RECYCLE RALLY INSTRUCTIONS

- 1 Hang your recycle bag on your lantern post at your campsite.
- 2 As you empty items that can be recycled, add them to the bag.
- 3 Leave your filled recycle bag on the post when you check out.
- 4 **Aluminum Cans ONLY!**

MISSOURI STATE PARKS
Missouri State Parks – a division of the Missouri Department of Natural Resources



Opening Day Recap

- Roaring River continues to be the premier trout fishing destination for the Ozarks.
- More tags sold than all other trout parks.
- Governor Mike Kehoe shot the gun to start the 2025 season.



NATURAL RESOURCE INTERPRETATION

Anna Skalicky
Park Naturalist



WHAT IS INTERPRETATION?



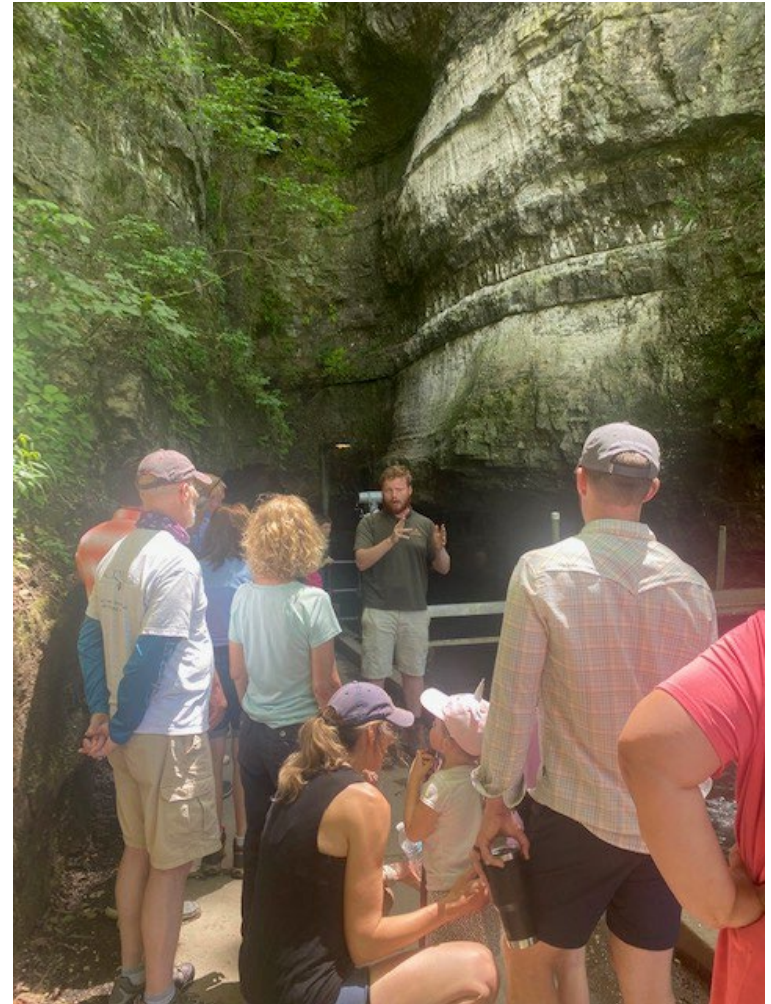
OZARK CHINQUAPIN NATURE CENTER

- The nature center is open Friday through Monday from 9am-5pm.
- Interior renovations
- Little Free Library
- Since last June, we've had about 5,000 people tour the nature center.



INTERPRETIVE PROGRAMMING

- Variety of programs including classics like cave hikes, river walks, hatchery tours, and snake programs.
- New program offerings regularly like story hours and crafts
- Weekly program schedule available on the park Facebook page, park bulletin boards, or by calling the park office or nature center
- Since last June, a little over 2,000 people have attended an interpretive program (not field trip or special event) in the park.



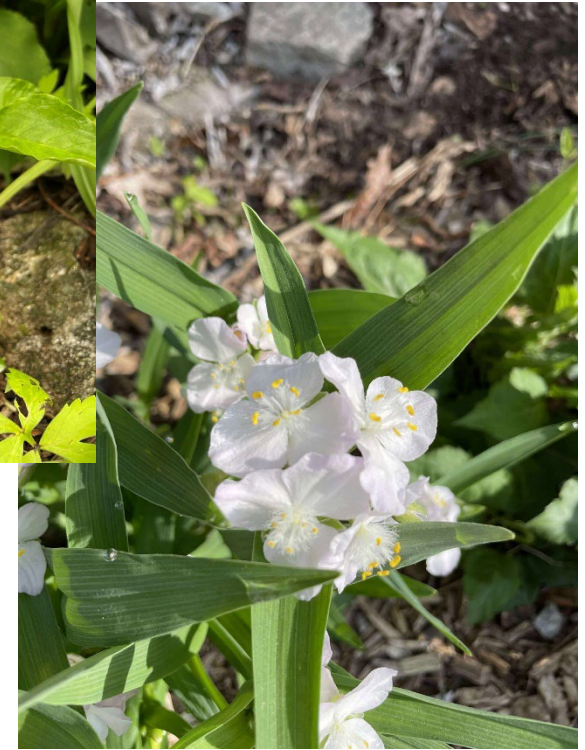
GROUP PROGRAMMING

Since last June, we've had ***26 school groups*** take field trips to the park with nearly ***900 students***.



POLLINATOR GARDEN

- Over 70 native plants
- Volunteer-led effort
- Identification signage
- Garden workdays



PARK EVENTS

CCC Pop-Up Exhibit, Geminid Meteor Shower Viewing, First Day Hikes, Bald Eagle Days



PARK EVENTS

Coffee for the Birds and Earth Day



PARK EVENTS

Kids Free Fishing Day



WOMEN IN NATURE



Big Sugar Creek



Roaring River

UPCOMING EVENTS

Kid €Ç 1 Æ: Sat, July 12

v Á†-Æ« v Æπ- i Á† π· Æ ` †ŠD π: Sat, September 13

(registration opens July 31)

i f i z ÆÁÁÆ Fri, October 10-Sun, October 12

(registration opens August 12)



ECOLOGICAL STEWARDSHIP

Murphy Kindoll
Natural Resource Ecologist



Tree Removal

- Significant storms and EAB resulted in lots of tree damage
- Tree survey conducted every fall, this year's survey resulted in removal of 46 trees



Emerald Ash Borer

- Has been very detrimental to our Ash populations across the US
- One of main reasons for significant tree mortality in the campgrounds
- Usually spreads by transport of infested wood



<https://naturallycuriouswithmaryholland.wordpress.com/2018/03/05/first-emerald-ash-borer-evidence-found-in-vermont/>



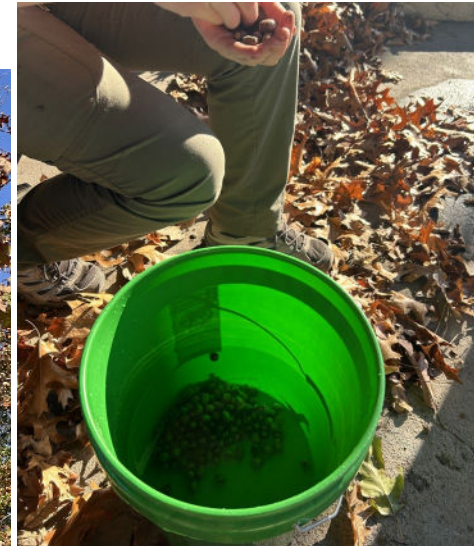
Tree Replacement Plan

- First round of transplant saplings were planted in the new section of campground 3
- Future plans to fill that area in and provide more shade



Tree Landscaping Plan

- MSP has partnered with Forrest-Keeling tree nursery
- We collect seeds, they grow saplings at their facility and we plant them at our sites
- Keeps plant genetics true to each park
- Currently working on yearly collection and replanting/improvement program



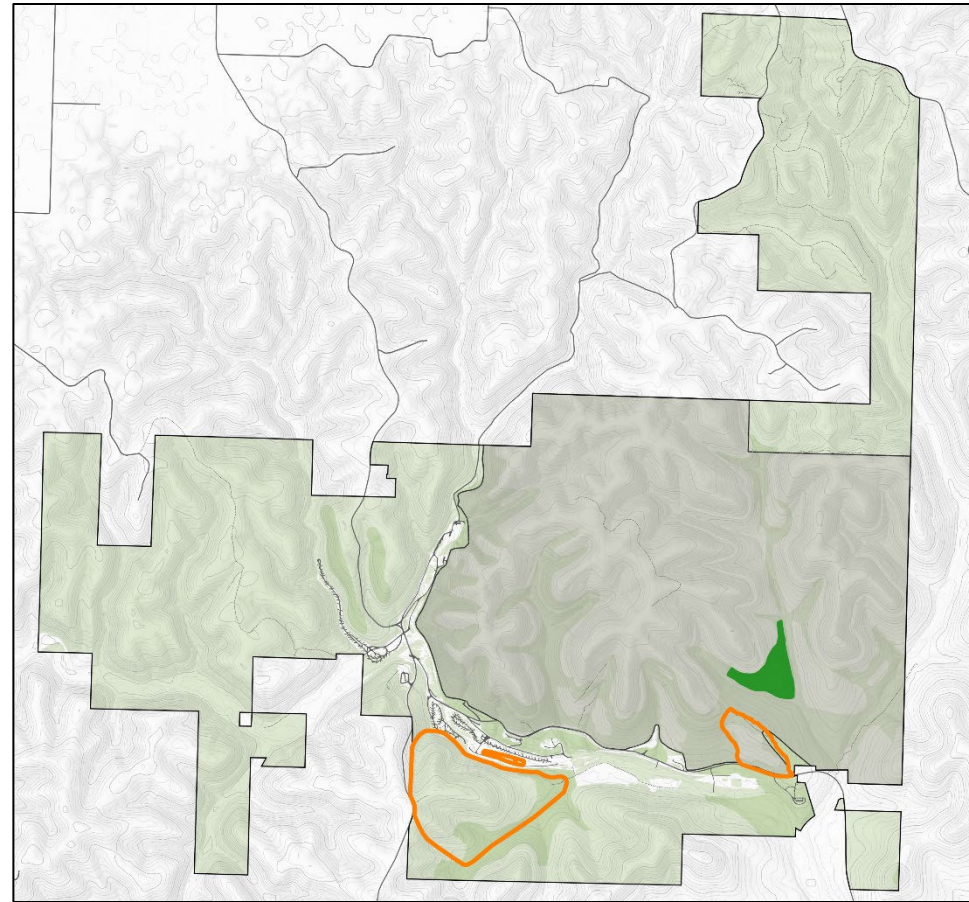
Natural Resource Management (RRSP)

- Firelines
 - Pollinator Area (0.5 miles)
 - Unit 7 (1 mile)
 - Pine Hollow (1.5 miles)



Natural Resource Management (RRSP)

- Firelines
 - Pollinator Area (0.5 miles)
 - Unit 7 (1 mile)
 - Pine Hollow (1.5 miles)



Natural Resource Management (RRSP)

- Rx burning
 - Pollinator Area (2.5 acres)
- Glade Restoration
 - Continued work on glade 3
- Continued flora/fauna studies are being conducted
 - Ozark Chinquapin
 - Spring recharge study



Natural Resource Management (RRSP)

 **BioOne** DIGITAL LIBRARY

Ecological Factors Influencing Chestnut Blight Infection and Reproductive Success in Ozark Chinquapins (*Castanea ozarkensis*)

Authors: Evilsizor, Danielle F., and George, Andrew D.

Source: Natural Areas Journal, 45(2) : 66-75

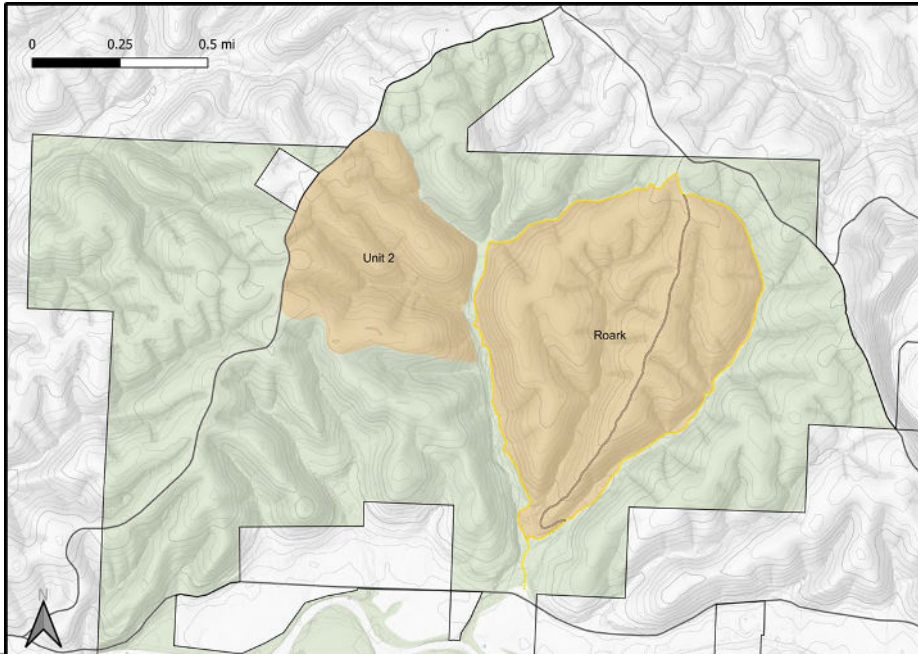
Published By: Natural Areas Association

URL: <https://doi.org/10.3375/2162-4399-45.2.2>



Natural Resource Management (BSCSP)

- Firelines
 - Roark unit (4 miles)
 - Unit 2 (2.5 miles)
 - AmeriCorps St. Louis



Wild Area Update (RRSP)

- 1 mile of fireline built
- Continued glade restoration and invasive species control occurring
- Firetower trail reroute project is underway and will better showcase the natural features of the area
- Main threats include invasive species and cedar encroachment on glades



Wild Area Update (BSCSP)

- 6.5 miles of fireline built
- Moderate storm damage to trees (has all been cleared from public use areas)
- Continued invasive species control occurring
- Main threats include invasive species, cedar encroachment on glades and unauthorized use.



Park Events

Amanda Cope
Assistant Superintendent



PAST EVENTS OVERVIEW

- Holiday Kick Off In The Park
 - Christmas Door Swag
 - Ornaments
 - Kids DIY Lantern Tutorial Video



PAST EVENTS OVERVIEW

- 1st Annual Christmas Candlelight and Cookie Stroll
 - Santa Meet and Greet
 - Traditional Christmas Stories
 - T'was The Night before Christmas Reading
 - Cookies and hot cocoa
 - 500 luminaires



Upcoming Events

- 1st Annual Trout-O-Lantern Festival
 - October 25th 2025
 - Campsite decorating contest
 - Story Teller
 - More to Come



Upcoming Events

- **Christmas Open House and Holiday Season Kick Off**
 - Christmas Door Swag and Ornaments
 - Nov. 8th, 2025, 9am-12pm
CCC Lodge
 - Catch the Spirit of Christmas with Roaring River Adventures- Christmas Retail and Fantastic Deals!
- **2nd Annual Candlelight and Cookie Stroll**
 - Meet and Greet with Santa at the CCC Lodge
 - Cookies and Hot Cocoa
 - T'was The Night Before Christmas Reading
 - 1000 luminaires
 - 1 Ornament Per Family
 - Dec. 20th 2025, 5:30pm to 8:30pm



CONCESSION

Jotham Brown

General Manager



MISSOURI STATE PARKS RANGER PROGRAM

Carrie Byron
Park Ranger



MISSOURI DEPARTMENT OF CONSERVATION

Terry Gerke

Assistant Hatchery Manager, Roaring River Hatchery



mostateparks.com

Questions?

